

BDB BUSINESS DEVELOPMENT BOARD
of PALM BEACH COUNTY

Annual Report

2021-2022



**ENTERPRISE
FLORIDA**



Table of Contents

- Page 1: Letter from the President & CEO
- Page 2: BDB Board of Directors
- Page 4: BDB Employees
- Page 5: About the Business Development Board
- Page 6: Five Year Impact
- Page 7: Palm Beach County Snapshot
- Page 8: Corporate Relocations & Expansions
- Page 13: Additional Accomplishments
- Page 14: Programs & Initiatives
- Page 15: Domestic & International Outreach Missions
- Page 16: Community Engagement & Support
- Page 18: BDB Events
- Page 20: Education Initiatives
- Page 21: Marketing
- Page 23: Wall Street South
- Page 24: University of Florida's Investments
- Page 25: The Future—Goals for 2022-2023
- Page 26: Our BDB Members
- Page 31: Contact Information

Letter from the President & CEO



In the past year, Palm Beach County has experienced transformational business growth that bodes well for the future of our region.

For both our office and industrial real estate markets, 2021 saw the largest absorption rates in seven years. Along with attractive Class A office space, we now have 50 million square feet of industrial space, including four Amazon facilities.

Palm Beach County is officially "Wall Street South", attracting financial titans from across the nation with Citadel and BlackRock as the newest additions.

Other significant investments include the University of Florida with plans to open a 13-acre campus in West Palm Beach and the acquisition of the Scripps Research Institute in Jupiter.

To measure our success as a public/private economic development organization, we pay close attention to the numbers. It was a record high year in several categories.

We facilitated:

- 33 corporate relocations and expansions
- 2,502 jobs
- 1,689,109 square feet of commercial and industrial space
- \$362,588,797 in capital investment

These outstanding results are a tribute to the invaluable support we receive from our BDB members, as well as our strong partnerships with state, county and city leaders, including the Palm Beach County Board of County Commissioners, Enterprise Florida, CareerSource, the Economic Council, Lake Okeechobee Regional Economic Alliance, area chambers of commerce and public and private educational institutions.

Thanks to your support, our county looks forward to the future with confidence.

Kelly Smallridge
President & CEO
Business Development Board
of Palm Beach County (BDB)



BDB Board of Directors

EXECUTIVE COMMITTEE

OFFICERS

Harvey E. Oyer, III, BDB Chair
Shutts & Bowen LLP
*Representing Chamber of Commerce
of the Palm Beaches*

Brian Seymour, BDB Vice Chair
Gunster
Director at Large

J. Michael Prince, Treasurer
USPA Global Licensing Inc.
*Representing Commissioner
Maria Marino*

Juan Tagle, Secretary
Palm Beach Capital
Director at Large

Benjamin Boynton
Boynton Financial Group
Director at Large

Fabiola Brumley
Bank of America
Director at Large

Frank Compiani
Retired, RSM US LLP
Representing Economic Council

George Elmore, Chair Emeritus
Retired, President Harddrives, Inc.
Director at Large

Ken Kahn, Chair Emeritus LRP
Media Group
Director at Large

Don Kiselewski
Florida Power & Light
Director at Large

Gina Melby
HCA Florida JFK Hospital
Director at Large

Carey O'Donnell, Past Chair
Native Intelligence
Director at Large

Kelly Smallridge, President and CEO
Business Development Board
of Palm Beach County

Robert Weinroth, Mayor
*Palm Beach County Board
of County Commissioners*

BOARD OF DIRECTORS

Colonel Antonio Araujo
Palm Beach County Sheriff's Office
*Representing Commissioner
Dave Kerner*

Mark Bellissimo
Wellington Equestrian Partners, LLC
Director at Large

Richard Bernstein
Richard S. Bernstein & Associates, Inc.
Director at Large

Cressman Bronson
PNC Bank
Director at Large

Marty Cass
BDO
Director at Large

Chris Kennedy
Suffolk
Director at Large

Bobby D'Angelo
Compson Associates
Director at Large

Matthew Enochs
Pratt & Whitney
Director at Large

Pepe Fanjul Jr.
Florida Crystals
Director at Large

Jesse Flowers, II
SouthState Bank
*Representing the Greater Delray
Beach Chamber*

Jake Geleerd
Tortoise Properties
Director at Large

George Gentile
2GHO
*Representing Palm Beach
North Chamber of Commerce*

Kyle Gilley
Carrier Corporation
Director at Large

Francisco Gonzalez
Gonzalez, Shenkman & Buckstein, P.L.
*Representing Central Palm Beach
County Chamber of Commerce*

Joseph Jacobs
Wexford Real Estate Investors (WREI)
Director at Large

Eric Kelly
Quantum Foundation
Representing Economic Council

BDB Board of Directors

Gary Lesser

Lesser, Lesser, Landy & Smith, PLLC
Representing Economic Council

Brendan Lynch

Plastridge Insurance
Director at Large

Mark Matthews

*Representing Commissioner
Maria Sachs*

Jim Maus

Aerojet Rocketdyne
Director at Large

Michelle McGovern

Baptist Health
*Representing Commissioner
Mack Bernard*

Neil Merin

NAI/Merin Hunter Codman
Representing Economic Council

Dr. David Nicholson

Stiles Nicholson Foundation
Director at Large

Richard Rendina

Rendina Healthcare Real Estate
Director at Large

Donia Roberts

*Representing Lake Okeechobee
Regional Economic Alliance*

Randy Spicer Jr.

Moss Construction
Director at Large

Keith Spina

Spina O'Rourke + Partners
*Representing Commissioner
Greg Weiss*

Erick Strati

Wells Fargo
Director at Large

Bob Tucker

ADT
*Representing Greater Boca Raton
Chamber of Commerce*

Katherine Waldron

Port of Palm Beach Commissioner
Representing Port of Palm Beach

Keith Wedgworth

Wedgworth Farms
*Representing Commissioner
Melissa McKinlay*



EX-OFFICIO

Michael Burke, *Superintendent*
School District of Palm Beach County

Julia Dattolo, *CEO*
CareerSource Palm Beach County

Dr. John Kelly, *President*
Florida Atlantic University

Ava L. Parker, J.D., *President*
Palm Beach State College

Pam Rauch
Florida Power & Light
Representing Economic Council

BDB Employees:



Kelly Smallridge
President and CEO
ksmallridge@bdb.org



Gary Hines
Senior Vice President,
Administration
ghines@bdb.org



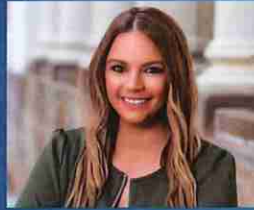
Tim Dougher
Vice President, Business Retention,
Recruitment & Expansion
tdougher@bdb.org



Shawn Rowan
Vice President, Business Retention,
Recruitment & Expansion
srowan@bdb.org



Lisa Anderson
Vice President, Private Funding
landerson@bdb.org



Kristen Boyd-Liberman
Vice President, Marketing
and Media Relations
kliberman@bdb.org



Whitney West
Vice President, Events
and Strategic Initiatives
wwest@bdb.org



Juhi Singh
Events Manger
jsingh@bdb.org



Judy Fancher
Administrative Assistant, Economic
Development & Research
jfancher@bdb.org



Brad Nella
Business Development
Coordinator
bnella@bdb.org



Veronica McGill
Membership & Events
Assisttant
vmcgill@bdb.org



Susan Semon
Senior Executive Assistant to
the President & CEO
ssemon@bdb.org



Sharon Ferris
Office of First Impressions
sferris@bdb.org



Amelia Nesmachinov
Financial Manager
anesmachinov@bdb.org

About:

The Business Development is Palm Beach County's official economic development organization. It's one out of 71 organizations in the world recognized internationally as an Accredited Economic Development Organization (AEDO). It was also chosen as the #1 economic development organization in the state of Florida for 2022 by the Florida Economic Development Council.

- Formed in 1982
- Not for Profit, Private Corporation
- 40 Member Board of Directors
- 14 Employees
- 310 Members
- \$3.8 Million Budget



Mission:

To stimulate economic energy, promote business diversity and enrich the vitality of Palm Beach County through the relocation, retention and expansion of companies to or in Palm Beach County.

Vision:

To lead the transformation of Palm Beach County's economy creating a competitive and sustainable environment that attracts businesses and residents.

2022 Awards:

1. Economic Developer of the Year—*Florida Economic Development Council*
2. Business of the Year—*Chamber of Commerce of the Palm Beaches*
3. Rural Economic Development Deal of the Year—*Florida Economic Development Council*
4. Best in the State for Marketing; "Wall Street South"—*Florida Economic Development Council*
5. Inducted into UF Golden Gators—*University of Florida*
6. Second Place Internationally for Public Relations Efforts—*International Economic Development Council*

Five Year Impact:

In the past five years,
the Business Development Board assisted:

140	Corporate Relocations and Expansions
13,110	Direct Jobs Created or Retained
\$80,000	Average Salaries
\$1.12 Billion	Capital Investment

FACT:

Over the past five years, Palm Beach County invested **\$7 million** into the Business Development Board.

It received a return of **\$1.12 billion** in capital investment back into the County.

Palm Beach County Snapshot

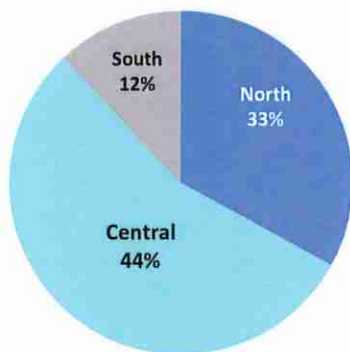
39	Cities and Towns
1.5M	Population
45	Average Age
\$68,331	Average Salary
2.9%	Unemployment Rate
16,818	People Added to the Labor Force in 1 Year
11,000	Moves to the County Per Year
61,728	New Yorkers Had Driver License Swaps; PBC Was #1 Recipient



2021-2022 Economic Development Results By the Numbers

33	Corporate Relocations and Expansions
2,502	Jobs
1,689,109	Square Feet of Commercial or Industrial Real Estate
\$362,588,797	Capital Investment

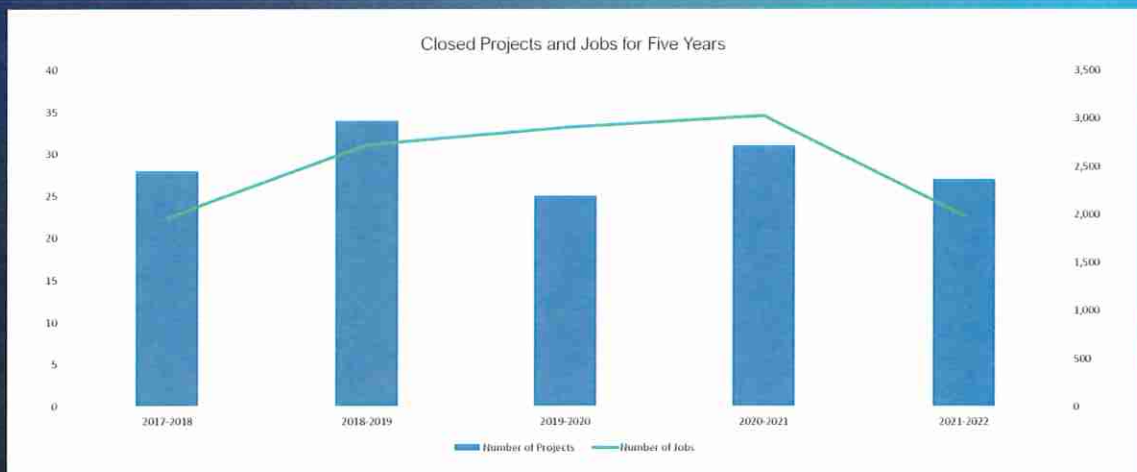
Breakdown by Region:



Top 5 Industries:

1. Life Sciences
2. Distribution/Logistics
3. Manufacturing
4. Financial Services
5. Aviation/Aerospace/Engineering

FACT: 51% of projects were relocations from out-of-state.



2021-2022 Corporate Relocations & Expansions

1. **AV-WORX:**
Expansion; 10 jobs; infotech; West Palm Beach; 5,000 sq. ft.
2. **Benefit Street Partners:**
Relocation; 17 jobs; Business Financial Services; West Palm Beach; 10,000 sq. ft.; \$5M capital investment
3. **Childeric USA:**
Relocation; 3 jobs; Equestrian; Wellington; 1,050 sq. ft.; \$25,000 capital investment
4. **Chromalloy:**
Expansion; 110 jobs; Aviation/Aerospace/Engineering; Palm Beach Gardens; 22,224 sq. ft., \$100,000 average wage; \$400,000 capital investment
5. **Dalfen Industrial:**
Relocation; Distribution/Logistics; Lake Park; 184,758 sq. ft.; \$40M capital investment
6. **Dalfen Industrial #2:**
Relocation; Distribution/Logistics; Palm Beach County; 131,000 sq. ft.; \$30M capital investment
7. **DePuy Synthes / Johnson & Johnson**
Expansion; 321 jobs; Life Sciences; Palm Beach Gardens; \$34M capital investment
8. **Dish Wireless:**
30 jobs; Infotech; West Palm Beach; 24,843 sq. ft.; \$550,000 capital investment
9. **Earth and Sugar:**
Expansion; 10 jobs; Manufacturing; West Palm Beach; 2,600 sq. ft.; \$1,021,080 capital investment
10. **Electriq Power:**
Relocation; 40 jobs; Corporate Headquarters; Palm Beach County; 7,500 sq. ft.; \$1M capital investment
11. **Essential Candy:**
Expansion; 26 jobs; Manufacturing; Wellington; 2,900 sq. ft.; \$100,000 capital investment
12. **Exacore:**
50 jobs; Manufacturing; Palm Beach County; 165,000 sq. ft.; \$1,200,000 capital investment
13. **GTCR:**
Relocation; 20 jobs; Business Financial Services; Palm Beach County; 7,000 sq. ft., \$280,000 average wage; \$5M capital investment
14. **HotelPlanner:**
Expansion; 50 jobs; Corporate Headquarters; West Palm Beach
15. **Hydraulic Supply Company:**
15 jobs; Manufacturing/Distribution; West Palm Beach; 27,934 sq. ft.; \$2,786,717 capital investment

2021-2022 Corporate Relocations & Expansions

16. **Ideal Nutrition:**
Expansion; 240 jobs; Distribution/Logistics; Palm Beach County;
43,000 sq. ft.; \$45,000 average wage; \$2.5M capital investment
17. **I.T. Solutions of South Florida:**
Expansion; 34 jobs; Information Technology; Hypoluxo; 8,000 sq. ft.; \$1,745,000
capital investment
18. **K-Rain:**
Expansion; 59 jobs; Manufacturing; Riviera Beach; 20,000 sq. ft.;
\$5M capital investment
19. **KruseCom:**
Relocation; 30 jobs; Information Technology; Palm Beach County
20. **Millennium Management Global Investment:**
Relocation; 150 jobs; Business Financial Services;
Palm Beach County; 40,000 sq. ft.; \$400,000 average wage;
\$10M capital investment
21. **MyBambu:**
Expansion; 90 jobs; Business Financial Services; West Palm Beach;
6,500 sq. ft.; \$405,000 capital investment
22. **National Dentex Corporation:**
Expansion; 50 jobs; Life Sciences; Jupiter
23. **Percepto:**
Relocation; 100 jobs; Aviation/Aerospace/Engineering;
Palm Beach County; 11,000 sq. ft.; \$5M capital investment
24. **ProCaps Group:**
Relocation; 242 jobs; Life Sciences; Palm Beach County;
88,000 sq. ft.
25. **Publix Distribution Center:**
Expansion; 270 jobs; Distribution/Logistics; Boynton Beach; 571,000 sq. ft.;
\$155,256,000 capital investment
26. **RENCO USA:**
Relocation; 100 jobs; Corporate Headquarters/Manufacturing;
Palm Beach County; 50,000 sq. ft.; \$25M capital investment
27. **RingSquared:**
Relocation; 10 jobs; Corporate Headquarters; Delray Beach
28. **Sanders Capital:**
Relocation; 25 jobs; Business Financial Services;
West Palm Beach; 10,000 sq. ft.; \$5M capital investment
29. **UOVO:**
Relocation; 15 jobs; Distribution/Logistics; Palm Beach County;
50,000 sq. ft.; \$15M capital investment
30. **Warrens Concrete:**
Relocation; 70 jobs; Manufacturing; Palm Beach County;
20,000 sq. ft.; \$100,000 capital investment

2021-2022 Corporate Relocations & Expansions

Companies Remaining Confidential Under Code Name:

31. Project Bird:

Expansion; 150 jobs; Manufacturing; Palm Beach County;
163,000 sq. ft.; \$5M capital investment

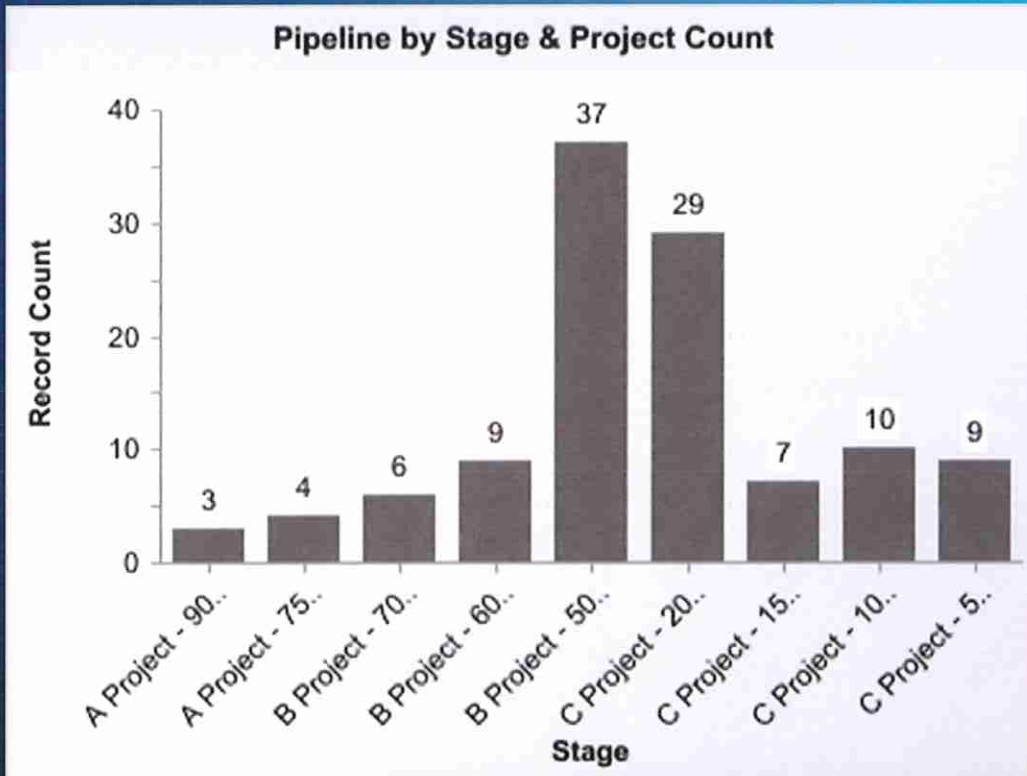
32. Project Cake 2:

140 jobs; life sciences; Palm Beach Gardens; 5,000 sq. ft.;
\$500,000 capital investment

33. Project Tuxedo:

Expansion; 25 jobs; Corporate Headquarters;
Palm Beach County; 5,000 sq. ft.; \$100,000 capital investment

Prospect Pipeline Activity for 2022-2023 Fiscal Year



Company Spotlights



ProCaps Group

Procaps Group, an international healthcare and pharmaceutical company from Latin America, acquired an 86,000 sq. ft. pharmaceutical production facility in Riviera Beach, FL with plans to add 200 jobs to the current workforce of 42. The BDB assisted with connections to CareerSource Palm Beach County's training grant programs and HR services.



Percepto

Percepto, the leading autonomous inspection and monitoring solution provider from Israel, will occupy an 11,000 sq. ft. building in Riviera Beach, FL. It estimates 100 new high wage jobs with several million dollars of capital investment planned. Introduced by Florida Power & Light, the BDB assisted with property searches, permitting assistance and local connections.



MyBambu

MyBambu is a financial technology platform that opens doors to unbanked Hispanics in the United States and is poised to become the leading financial solution for the Hispanic market. The company opened a 6,500 sq. ft office in West Palm Beach, FL, creating 82 new jobs. The BDB assisted with expedited permitting, local connections, and introductions to the City of West Palm Beach.



RENCO USA

RENCO USA, Inc. is a structural building system composite manufacturing and distribution company that opened a headquarters in Jupiter, FL. It plans to create over 100 new jobs at a 50,000 sq. ft. building. The BDB assisted with property searches and expedited permitting.



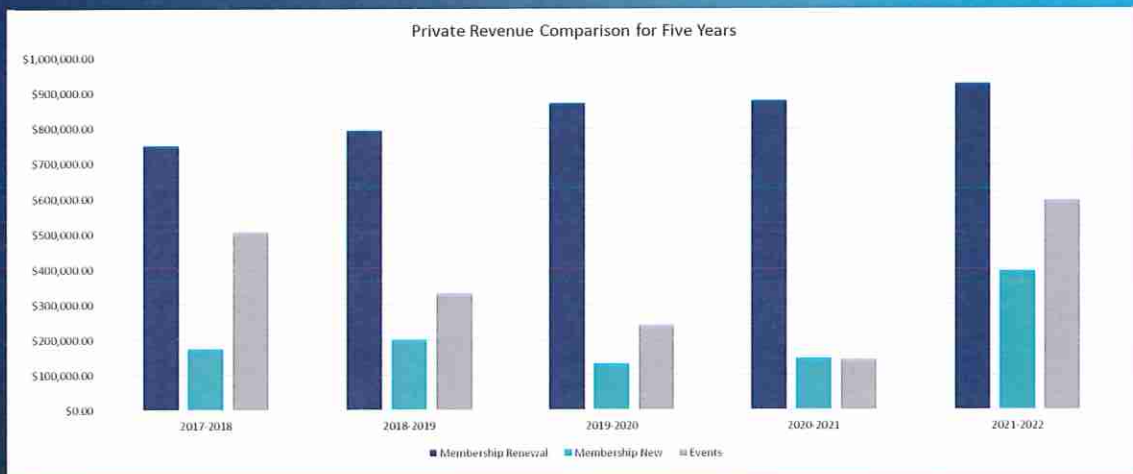
UOVO

UOVO, a leading art storage and logistics provider known as New York's #1 collections storage company, announced a second expansion this year. The first expansion was 23,000 sq. ft. in West Palm Beach, FL and the second expansion is at a 50,000 sq. ft. building in West Palm Beach, FL. The BDB assisted with local connections and expedited permitting.

Additional Accomplishments

\$1.96M	Private Funding
\$596k	Special Events (YTD)
35	Economic Development Events
12	Outreach Missions
100	Local Company Visits
100	Points of Technical Assistance

5 Year Snapshot of Events and Membership Activity



Economic Development Programs and Initiatives

- **Behind the Gates:**
A multiyear initiative to attract executives with second homes in Palm Beach County to move their business here. More than 1,000 jobs created.
- **Expedited Permitting:**
A program to speed up the permitting process for relocating or expanding companies.
- **Shovel Ready and Mega Site Program:**
Promoting large sites and land that are construction-ready for prospects.
- **BDB Business Visitation Program:**
Growing companies in our backyard matter most; therefore, we visit the facilities of 100 companies each year.
- **Technical Assistance:**
Assisting the needs of 100 local companies with connections to resources and helpful introductions.
- **BDB Non-Profit Foundation:**
The Foundation supports educational and programmatic activities that enhance and improve Palm Beach County's competitiveness.
- **Glades Region:**
The BDB actively promotes the Glades Region as an ideal business location around the globe. Some examples include the microsite dedicated to marketing the area's assets, www.pbcglades.org, and education initiatives hosted in the area. Belle Glade-based FINFROCK and the BDB recently won "Rural Deal of the Year".



Domestic and International Outreach Missions

1. IAMC Site Selection Consultant Event in Kansas City—10.3.21
2. EFI SelectFlorida Trade Show (Virtual)—11.30.21
3. Economix Consultant Connect in Phoenix—12.5.21
4. FPL Illuminations Consultant Event in Daytona Beach—2.7.22
5. TeamFL Site Selection Consultant Event in San Francisco—3.14.22
6. Florida Supply Chain Summit in Tampa—3.21.22
7. Area Development Site Selection Consultant Event in Raleigh-Durham—3.28.22
8. EFI Prospect Event in Chicago—4.17.22
9. IAMC Conference in Fort Lauderdale—4.30.22
10. TeamFL Site Selectors Event in Atlanta—5.26.22
11. Area Development Summer Site Selection Consultants Forum in Ohio—6.15.22
12. Southern Economic Development Council in San Antonio— 8.15.22



BDB Site Selection Consultant & Broker Familiarization Tour:

Annually, the BDB brings site location experts to Palm Beach County for a tour of the area's assets.

Community Engagement & Support

27 | Events as a Keynote Speaker or Panelist

51 | Local, Regional or Statewide Forums Attended

13 | Boards or Committees Supported



Boards or Committees that the BDB Serves On:

- Education Foundation
- Enterprise FL Stakeholders
- Florida Economic Development Council
- Homeless Coalition
- Keiser University
- South Florida Fair
- Southern Economic Development Council Board
- HomeSafe
- Comprehensive Economic Development Strategy Committee
- CareerSource
- Lake Okeechobee Regional Economic Alliance
- Housing Leadership Council
- Discover the Palm Beaches Sales and Marketing Advisory Committee
- Women Build 2022 Chair, Habitat for Humanity

Community Engagement

With 51 local, regional, statewide, or national forums attended by the Business Development Board to educate, inform, strategize, and/or promote the growth of business and industry, here are just a few:

- NAIOP, the Commercial Real Estate Development Association—10.7.21
- PBC Housing Steering Committee hosted by PBC Leadership Council—10.13.21
- Supply Chain Press Conference with Senator Scott—11.8.21
- 360 Rosemary Ribbon-Cutting and OneFlagler Groundbreaking—11.12.21
- World Trade Center collaboration presenting to the Kingdom of Bahrain—12.13.21
- Tri-County EDO meeting among the 3 South Florida EDOs—12.20.21
- "Palm Beach County Days" in Tallahassee meeting with several state legislators—1.11.22
- University of Florida press conference with IBM—2.7.22
- GrowFL event in Orlando to support several Palm Beach County companies—2.15.22
- Executives Association of the Palm Beaches 20th Annual Economic Forum—3.1.22
- Marine Industries Association collaboration during the Palm Beach Boat Show—3.24.22
- Precision Esthetics Ribbon Cutting—3.25.22
- Jewish Federation collaboration for outreach to Israeli-based firms—4.1.22
- Leadership trip with the Economic Council to Nashville—4.6.22
- Boynton Beach Economic Development Stakeholders Roundtable with FIU—4.20.22
- Presented to Canada / Florida Chamber of Commerce—5.4.22
- Florida Economic Development Conference to accept statewide awards—5.16.22
- West Palm Beach Mayor's Breakfast to welcome new companies—5.24.22
- Florida Power & Light quarterly economic development meeting—6.6.22
- Black Chamber of Commerce collaboration meeting—7.12.22
- Presented on a panel for "PBC Issues Forum"—7.28.22
- Lake Worth City Council presentation—8.2.22
- Guest Speaker presenting to CREW—8.9.22
- Women Build 2022 Habitat for Humanity Event—8.10.22
- Southern Economic Development Conference in San Antonio—8.15.22
- Palm Beach State College Fall Convocation Speaker—8.22.22
- Palm Beach TPA Downtown Intermodal Workshop—8.25.22
- NAIOP South Florida Panelist—8.30.22
- Project Opioid South Florida event—8.31.22
- Enterprise Florida TeamFL Meeting in Orlando—9.6.22
- International Economic Development Conference in Oklahoma—9.18.22

Over 30 BDB Economic Development Events. Here are just a few:



NewDay USA Luncheon
Featuring Rob Posner
10.28.21



Project Opioid
Palm Beach Region Event
11.2.21



Upper-Level Breakfast
Featuring UF President
11.3.21



Raise Your Glass Event
Featuring U.S. Ambassadors
11.17.21



Quarterly Luncheon
Featuring Related Urban
1.27.22



Upper-Level Breakfast
Featuring Mukang Cho
1.29.22



UF IBM Press Conference
Featuring an AI Partnership
2.7.22



Claim Your Future Showcase
Convening 1,000 Students
2.10.22



FAM Luncheon
Doug Cifu & Eric Becker
2.24.22



PNC Brunch
Economic Forecast
3.3.22



Education Luncheon
Partnership with Edu. Foundation
3.10.22



Upper-Level Breakfast
Featuring NFP
4.14.22



Golf Tournament
Co-Chairs Jake Geleerd & Keith Spina
5.6.22



Raise Your Glass
Featuring Jim Maus
5.13.22



Entrepreneur Luncheon
Moderated by Pam Rauch
5.27.22



Upper-Level Breakfast
Featuring Pratt & Whitney
8.10.22



Annual Gala
Over 500 top leaders
9.17.22

Task Forces Offered to Members



Growth & Infrastructure Task Force



Real Estate Roundtable



Economic Development Stakeholders



Private School Task Force



- Aviation/Aerospace/Engineering Task Force
- Distribution/Logistics Task Force
- Academic Leaders Council
- Life Science Advisory Council
- Summer College Intern Series

Education Initiatives



Countywide Claim Your Future Showcase & Glades Edition



Education Luncheon



Summer College Intern Series



Private School Headmaster's Task Force

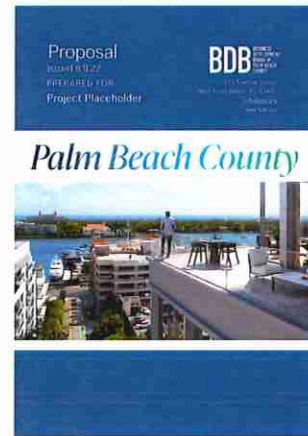


Academic Leaders Council

Marketing Palm Beach County

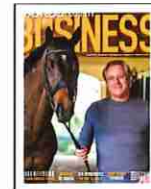
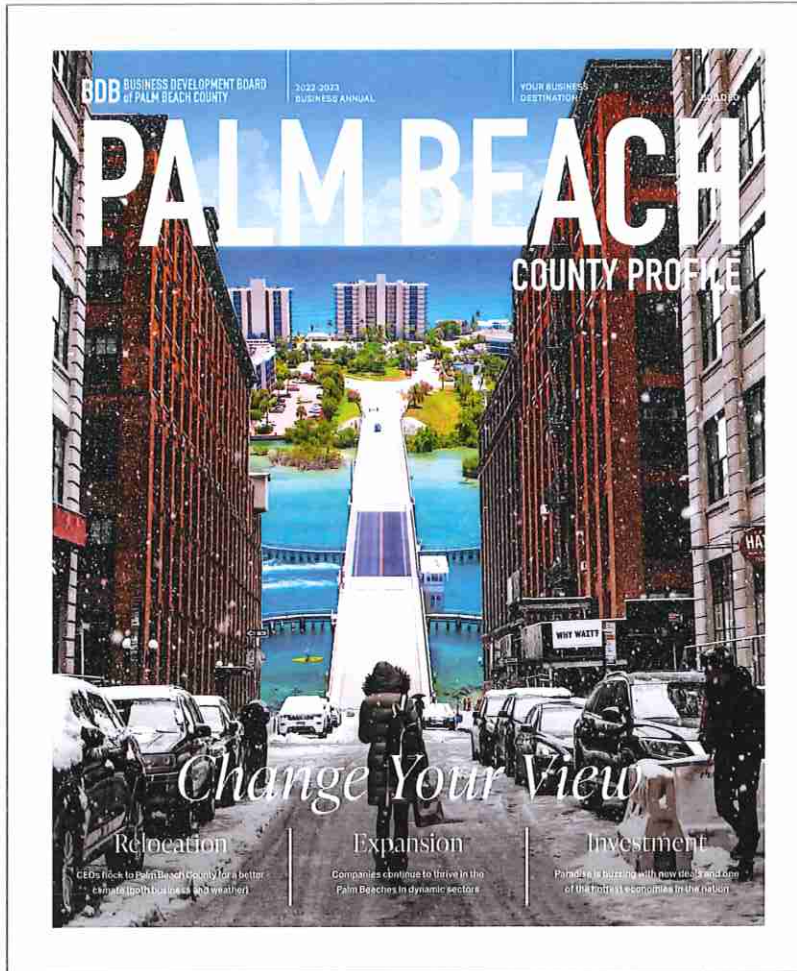


- 5 Million Digital Impressions
- 15,000 Publications Distributed
- 2 National Campaigns
- 150 Media Mentions
- 500k Social Media Reach
- 15k Followers
- 150 Website Leads
- 4 Awards
(Statewide & International)
- 2 Microsites:
PBCedu.org & PBCglades.org



Marketing Palm Beach County

Our Publications:



New Collateral:



Ad Campaign:



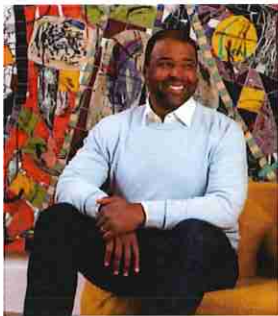
Wall Street South

The two most recent additions to "Wall Street South" are BlackRock and Citadel, both reportedly opening offices in Palm Beach County. It's a move that hundreds have made over the past couple of years. Recent data indicates transformational growth in Palm Beach County and the "Wall Street South" movement is at a historic pace of migration.

Statistics:

- 1.6 million Florida residents are New York natives, which makes up 8% of the state's population. *(Census Data Report)*
- 61,728 New Yorkers recently changed their drivers license to Florida and Palm Beach County was the #1 location for it. *(The Florida Department of Highway Safety and Motor Vehicles)*
- \$34 billion left New York State and Palm Beach County was the #1 recipient for that wealth migration. *(Unacast)*
- Four out of the top 10 Private Equity firms are located in Palm Beach County. *(Mergers & Acquisitions)*
- Largest county for year-over-year gain for average weekly wage at 15.6% out of the 343 largest counties in America. *(SIA)*
- Home to 42 billionaires & 71,000 millionaires. *(Forbes)*
- #1 county in Florida for growth by income & population. *(Unacast)*

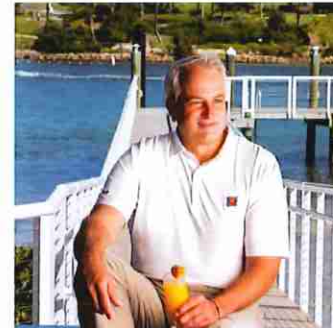
Executives Highlighted in the BDB's Annual Publication:



Frank Baker,
Siris Capital



Rob Posner,
NewDay USA



Doug Cifu,
Virtu Financial

Look Who's Here:

Abbot Downing
Addison Capital Partners
Affiliated Managers Group
AM Global Core Fund
Anagenesis Capital Partners
Atlantic Creek Real Estate
AUA Private Equity Partners
Aurelius Capital
BankRate
Benefit Street Partners
Bergen Asset Management
BlackRock
Blue Sea Capital
Blue Water Advisors
Boxwood Partners
Ill Capital Management
Cambridge Capital
Capital Asset Management Group
Catalus Capital
Chilton Trust Company
Citadel
Colony Capital
Comvest Partners
Convergence Investment Partners

Cresset
Cypress Trust Company
Dakota Wealth Management
DASH Prime
Directional Research & Trading, Inc.
DRB Capital
DRI Fund
DSM Capital Partners
ECN Capital Corporation
Ellevest
Elliott Management
Evercore Wealth Management
Family Office Networks
Focus Financial Partners
Forbes Family Trust
Fortress Investment Group
GenSpring Family Offices
Glenmede Trust
Global Trust Asset Management
Golden Tree Asset Management
Goldman Sachs Company
Graham Capital Management
Greenwich Wealth Management
Grey Value Management, LLC

GTCR
Hamilton Capital
HedgeCo Securities
Highbrook Investors
Hunter Global Investors
Impala Asset Management
Incapital
Intech Investment Management
JP Morgan
JVB Financial
Kayne Anderson
Lawless Edwards and Warren
Lee Munder Investments
Lighthouse Partners
Looking Glass Investments
Matrix Private Capital Group
Merrill Lynch Wealth Management
Mesirow Financial
Millennium Management Global
Moelis & Company
Morgan Stanley
MSD Capital
NewDay USA
Norwest Equity Partners
Oppenheimer & Company
Otter Creek Management

Palisade Capital Management
MyBambu
Palm Beach Capital
Point72
Polen Capital
Priderock Capital Partners
RAM Investment Group
RedBird Capital Partners
Red Oak Capital Partners
RiverNorth Capital
Sanders Capital LLC
Siris Capital
SkyBridge Capital
State Trust Capital
Sterling Organization
Stoever Glass & Co
Sun Capital Partners, Inc
The Legend Group
Theorem Fund Services
Tremblant Capital
Tudor Investment Corporation
UBS Financial Services
Virtu Financial
Volondge Investment Management
Wealthspire Advisors
Wexford Real Estate Investors (WREI)
WorldQuant

Significant Investments by the University of Florida

The University of Florida has made significant investments in Palm Beach County over the past year. The Business Development Board provides its boardroom as a satellite location as it continues expanding its local footprint.



UF Scripps Biomedical Research—Jupiter, FL

The Florida campus of Scripps Research in Jupiter became part of the University of Florida's academic health center as UF Scripps Biomedical Research, which will translate biomedical discoveries into improved patient outcomes in Florida and around the world.

A New 13-Acre Campus in Downtown West Palm Beach

UF's new campus in downtown West Palm Beach will offer graduate courses in financial services, financial technology and artificial intelligence to as many as 1,000 students each semester beginning as soon as fall 2026. The goal is to work with civic and business leaders to create educational programs that can respond to the evolving needs of the region.

IBM Partnership—Announced in West Palm Beach, FL

IBM will support UF's faculty and students in developing diverse and high-demand skill sets in artificial intelligence, cybersecurity, quantum cloud computing and data science that align with industry needs and trends. The collaboration is the next step in UF's ambitious goal to be the leading AI University in the nation.

Jupiter Medical Center Partnership

Together, Jupiter Medical Center and UF Health will plan the development of jointly owned and operated clinical facilities in the region. In addition, discussions are set to begin on the development of novel clinical and hospital programs and service lines, as well as programs and services that support the translation of research findings into treatments that improve patient outcomes.

The Future

The Business Development Board operates through five core departments. As we look ahead to the 2022-2023 Fiscal Year, here are some of our goals:

30	Relocation, Retention & Expansion Projects
1,600	New or Retained Jobs
\$50M	Direct Capital Investment
300k	sq. ft. of Industrial or Office Space
100	Local Visits to Existing Companies
75	Points of Technical Assistance
10	Outreach Missions
35	Economic Development Events
\$1.94M	Private Funding
85%	Member Retention Rate
100	Media Interviews
3M	Digital Impressions
15,000	Publication Copies Distributed

2021-2022 BDB Members

County Partner

Board of County Commissioners

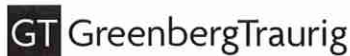


Chairman's Council



2021-2022 BDB Members

Board of Advisor



2021-2022 BDB Members

Corporate

2GHO, Inc.	DePuy Synthes Power Tools, a Johnson & Johnson Company	Native Intelligence
ADT	Drawbridge	Norwest Equity Partners
AKA Hotels+Hotel Residences	DSM Capital Partners LLC	Palm Beach Capital
Akel Homes	ESPN West Palm	Palm Beach Marriott Singer Island Beach Resort & Spa
Alliance HP Management LLC	Fifth Third Bank	Palm Beach State College
Amazon	First Republic Bank	PayProTec
BankUnited	Florida Atlantic University	PEBB Enterprises
Barry Gutknecht Douglas Elliman	Florida Blue	Plastridge Insurance Agency
BDO	Florida Public Utilities Company	Quantified IT Solutions
Berkowitz Pollack Brant Advisors + CPAs	Fox Rothschild LLP	Quantum Foundation
BGi Companies	GL Homes	Rapid Removal, Inc.
Brightline	Good Samaritan Medical Center	Regions Bank
Brilliant	Haug Partners LLP	Rendina Healthcare Real Estate
C3-Complete	Hotwire Communications	Rybovich
Capital Analytics	I.T. Solutions of South Florida, Inc.	SBA Communications
Catalfumo Companies	JLL	Skanska USA Building, Inc.
The Center for Arts and Innovation	JMorton Planning & LA	SouthState Bank
Chen Moore and Associates	Jones Foster	Sympatico Real Estate
CIBC Bank USA	KAST Construction	The Related Companies
City National Bank	Keller Augusta	The Seagate Hotel & Spa
Coastal Construction	Lesser, Lesser, Landy & Smith, PLLC	The Special Event Resource and Design Group, Inc.
Compson Associates, Inc.	Lynn University	The Weitz Company
Connect One Bank	M&T Bank Corporation	UOVO Fine Art
CP Group	Martens Group	Verdex Construction
Craft Construction Company	Morning Calm Management	Wellington Regional Medical Center
Day Pitney LLP	NAI/Merin Hunter Codman, Inc.	

2021-2022 BDB Members

President's

Alchemy/A Regan Communications Company	Gilbane Building Company	Port of Palm Beach
Allied Universal Security Services	Gonzalez, Shenkman & Buckstein, P.L.	Power Systems Mfg., LLC (PSM)
Anderson-Moore Construction Corp.	Grassi Advisors and Accountants	Preferred Printing & Graphics
Anderson Real Estate @ Touchstone Webb Realty Co.	HBK CPAs and Consultants	Richard S. Bernstein Insurance Group
AT&T	Hilton West Palm Beach	Schulz Business
Beacon Pharmaceutical Jupiter	Holland & Knight LLP	Shutts & Bowen LLP
Becker & Poliakoff	Hulett Environmental Services	Sikorsky Aircraft Corporation
Benchmark Financial Wealth Advisors	Jean Phillips - Douglas Elliman	Sotheby's International Realty
Black Diamond General Contracting	Jewish Federation of Palm Beach County	Spina O'Rourke + Partners
Bob Goldfarb Custom Clothing	Jim Moran Institute For Global Entrepreneurship	SVN Florida
Brown & Brown of Florida, Inc.	Joe DiMaggio Children's Hospital	TBC Corporation
CBI Workplace Solutions	Junior Achievement of the Palm Beaches & Treasure Coast	TCRE
CBIZ MHM, LLC	Jupiter Medical Center	The Gardens Mall
CBRE, Inc.	Kimley-Horn and Associates, Inc.	The Honda Classic
City of Boynton Beach	Ko-Mar Productions, Inc.	The Sheehan Agency
Comiter, Singer, Baseman & Braun, LLP	LEO A DALY ARCHITECTS	Thornton Construction Company, Inc.
Community Foundation for Palm Beach and Martin Counties	Lessing's Hospitality Group - Pelican Club	Toshiba Business Solutions
Coral Gables Trust Company	LORE Lake Okeechobee Regional Economic Alliance of PB County, Inc.	Tricera Capital
Coteur & Hearing	Marcum LLP	UBS Private Wealth Management
CS Media Works	ModMed	United Franchise Group
Current Connections, Inc.	OFS	Universal Engineering Sciences
Dale Carnegie Training	Oxbow Carbon LLC	UPLIN Medical
Daszkal Bolton LLP	Oxbridge Academy	Urban Design Kilday Studios
Diabetes Research Institute Foundation	Palm Beach Atlantic University	Verizon
Discover The Palm Beaches	The Palm Beach County Sheriff's Foundation	Ward, Damon, Posner, Pheterson and Bleau, P.L.
Duke Realty	Palm Beach Media Group	Weiss Serota Helfman Cole & Bierman, P.L.
Education Foundation	Palm Beach Tours & Transportation	West Palm Beach/ Community Redevelopment Agency
Els for Autism Foundation	Palm Beach Transportation Planning Agency	WGI
FHE Health	PGA National Resort & Spa	Woodstock Wealth Management, Inc.
Forest Development		

2021-2022 BDB Members

General

AeroClean Technologies, LLC	Jupiter Beach Resort	Sexton Engineering
Affiliated Development	JW Cheatham, LLC.	Shapiro/Pertnoy Companies
AFLAC/Leonaggeo Benefits, Inc.	Keiser University	Simon Isaacs Real Estate LLC
Akerman LLP	Keyes Relocation Services	Sotheby's International Realty - Debra Reece
Anthology, Inc.	Kravis Center for the Performing Arts	South Florida Fair & PBC Expositions
Avenir Development, LLC	LGM Pharma	South Florida Manufacturers Association (SFMA)
BGI Group, LLC.	Locality Bank	St. Mark's Episcopal School
Bill Bone Bike Law	M.C. Elite Management Services	StevenDouglas
BioFlorida	Marine Industries Association of Palm Beach County, Inc.	SurGenTec
Boynton Beach Community Redevelopment Agency (CRA)	Max Planck Florida Institute for Neuroscience	SV Microwave
BRPH Architects - Engineers, Inc.	McHale & Slavin, P.A.	Tambone Companies, LLC
Carr, Riggs & Ingram (CRI)	Meyer Preparatory School	Tanne Family Office
Cemex	MMB	The Benjamin School
Central Palm Beach County Chamber of Commerce	Nason, Yeager, Gerson, Harris & Fumero, P.A.	The Breakers
Chamber of Commerce of the Palm Beaches	Nelson Mullins	The Greater Boca Raton Chamber of Commerce
City of Belle Glade	Oasis Outsourcing	The Greater Delray Beach Chamber of Commerce
City of Boca Raton	Opal Grand Oceanfront Resort & Spa	The Knight Group, LLC
City of Delray Beach	Pacifica Engineering Services LLC	The School District of Palm Beach County
City of Riviera Beach	City of Palm Beach Gardens	The Markarian Group
Clearlake Executive Suites/Clearlake Plaza	Palm Beach County Sports Commission	The Pine School
Coldwell Banker Realty The Palm Beaches	Palm Beach North Chamber of Commerce	Town of Juno Beach
Collins Development Company	Palm Beach Yacht Club	Town of Jupiter
Cox Science Center and Aquarium	Paradise Real Estate International	Town of Lake Park
Cultural Council for Palm Beach County	Passport Publications & Media Corporation	U.S. Realty Management Co. LLC
Cushman & Wakefield of Florida, LLC	PBKC	UF Scripps Biomedical Research
Dakota Wealth Management	Penn-Florida Companies	United Way of Palm Beach County
Economic Council of Palm Beach County	PGAL	USI Insurance Services
Experience Epic Events	Plaza Center	Verity Partners Inc.
Flagler Realty & Development, Inc.	Prologis	Village of Royal Palm Beach
Frankel, Loughran, Starr & Vallone LLP	Ranger Construction Industries, Inc.	Village of Wellington
Fuller Center	Rehmann	Wafer World, Inc.
Happy Day Creations	Reichel Realty & Investments, Inc.	Waterfront Properties
Illustrated Properties	Rosarian Academy	West Palm Beach Marriott
ImageNet Consulting	Saint Andrew's School	World Trade Center Palm Beach
Index Investment Group	Scripps Research	
Itasca Construction Associates, Inc.	Seven Kings Holdings, Inc.	

Contact Us:



Kelly Smallridge
President and CEO
ksmallridge@bdb.org



Gary Hines
Senior Vice President,
Administration
ghines@bdb.org



Tim Dougher
Vice President, Business Retention,
Recruitment & Expansion
tdougher@bdb.org



Shawn Rowan
Vice President, Business Retention,
Recruitment & Expansion
srowan@bdb.org



Lisa Anderson
Vice President, Private Funding
landerson@bdb.org



Kristen Boyd-Liberman
Vice President, Marketing
and Media Relations
kliberman@bdb.org



Whitney West
Vice President, Events
and Strategic Initiatives
wwest@bdb.org



Juhi Singh
Events Manger
jsingh@bdb.org



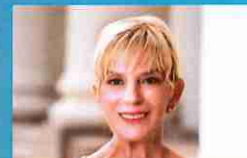
Judy Fancher
Administrative Assistant, Economic
Development & Research
jfancher@bdb.org



Brad Nella
Business Development
Coordinator
bnella@bdb.org



Veronica McGill
Membership & Events
Assistant
vmcgill@bdb.org



Susan Semon
Senior Executive Assistant to the
President & CEO
ssemon@bdb.org



Sharon Ferris
Office of First Impressions
sferris@bdb.org



Amelia Nesmachinov
Financial Manager
anesmachinov@bdb.org