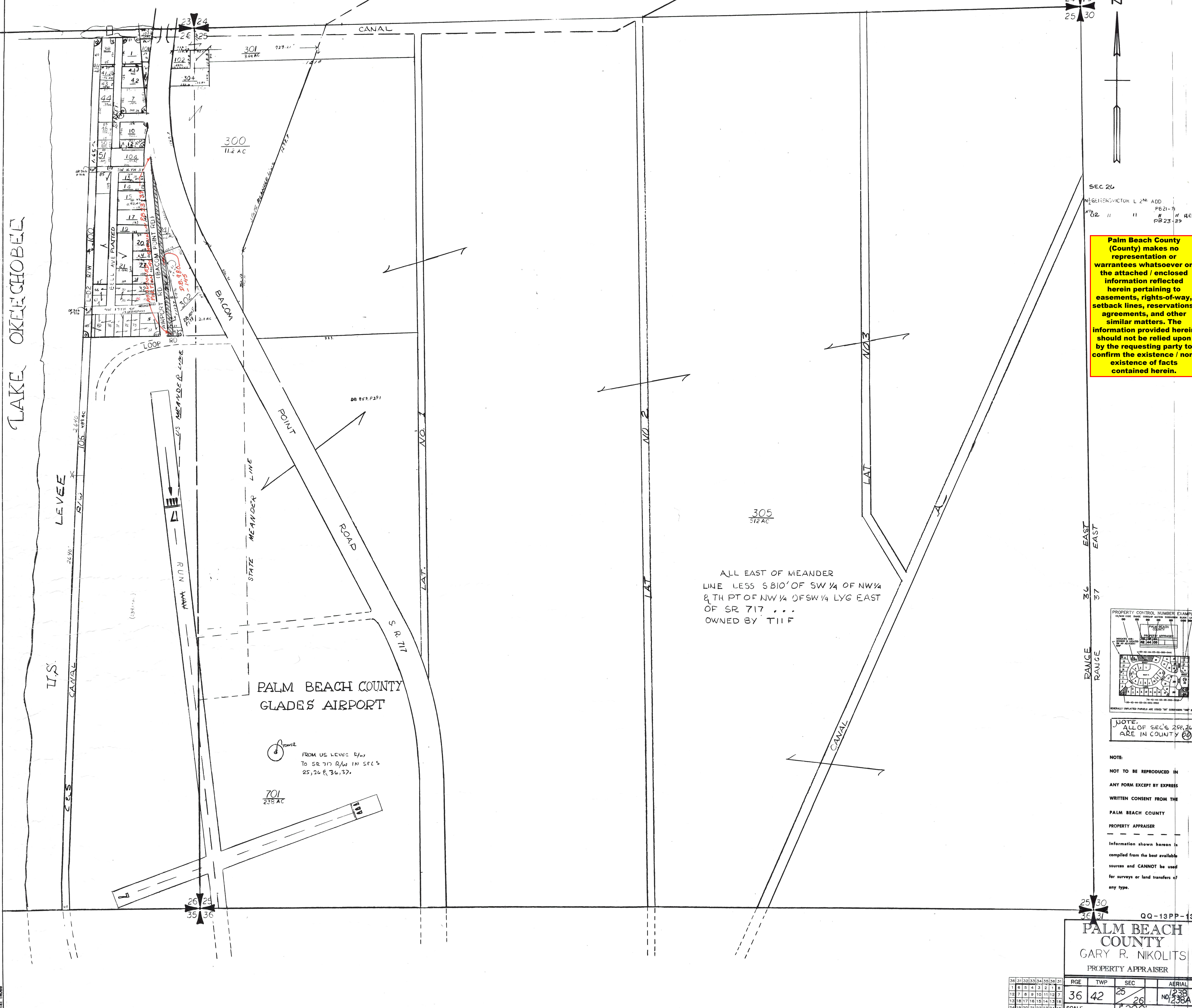


LAKE OKEECHOBEE

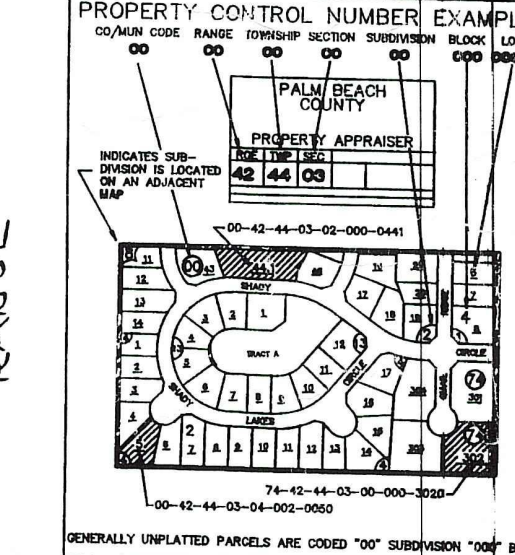


Palm Beach County (County) makes no representation or warranties whatsoever on the attached / enclosed information reflected herein pertaining to easements, rights-of-way, setback lines, reservations, agreements, and other similar matters. The information provided herein should not be relied upon by the requesting party to confirm the existence / non-existence of facts contained herein.

ALL EAST OF MEANDER LINE LESS S 810' OF SW 1/4 OF NW 1/4 & TH PT OF NW 1/4 OF SW 1/4 LYG EAST OF SR 717 ... OWNED BY TILF

PALM BEACH COUNTY
GLADES AIRPORT

FROM US LEVEE R/W TO SR 717 R/W IN SFCS 25, 26 & 36, 37.



NOTE: ALL OF SEC'S 25, 26 ARE IN COUNTY

NOTE: NOT TO BE REPRODUCED IN ANY FORM EXCEPT BY EXPRESS WRITTEN CONSENT FROM THE PALM BEACH COUNTY PROPERTY APPRAISER. Information shown hereon is compiled from the best available sources and CANNOT be used for surveys or land transfers of any type.

QQ-13PP-13
PALM BEACH COUNTY
GARY R. NIKOLITS
PROPERTY APPRAISER

31	32	33	34	35	36	37
1	2	3	4	5	6	7
12	7	8	9	10	11	12
13	18	17	16	15	14	13
24	19	20	21	22	23	24
25	30	29	28	27	26	25
36	31	32	33	34	35	36
1	6	5	4	3	2	1

RGE	TWP	SEC	AERIAL
36	42	25	NO. 238A
SCALE	1"=200'		
DRAWN BY	GRICE 9-25-73		
UPDATED	2/12/02 RC		