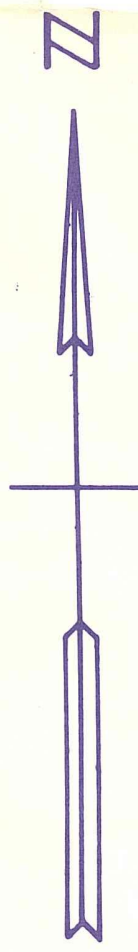
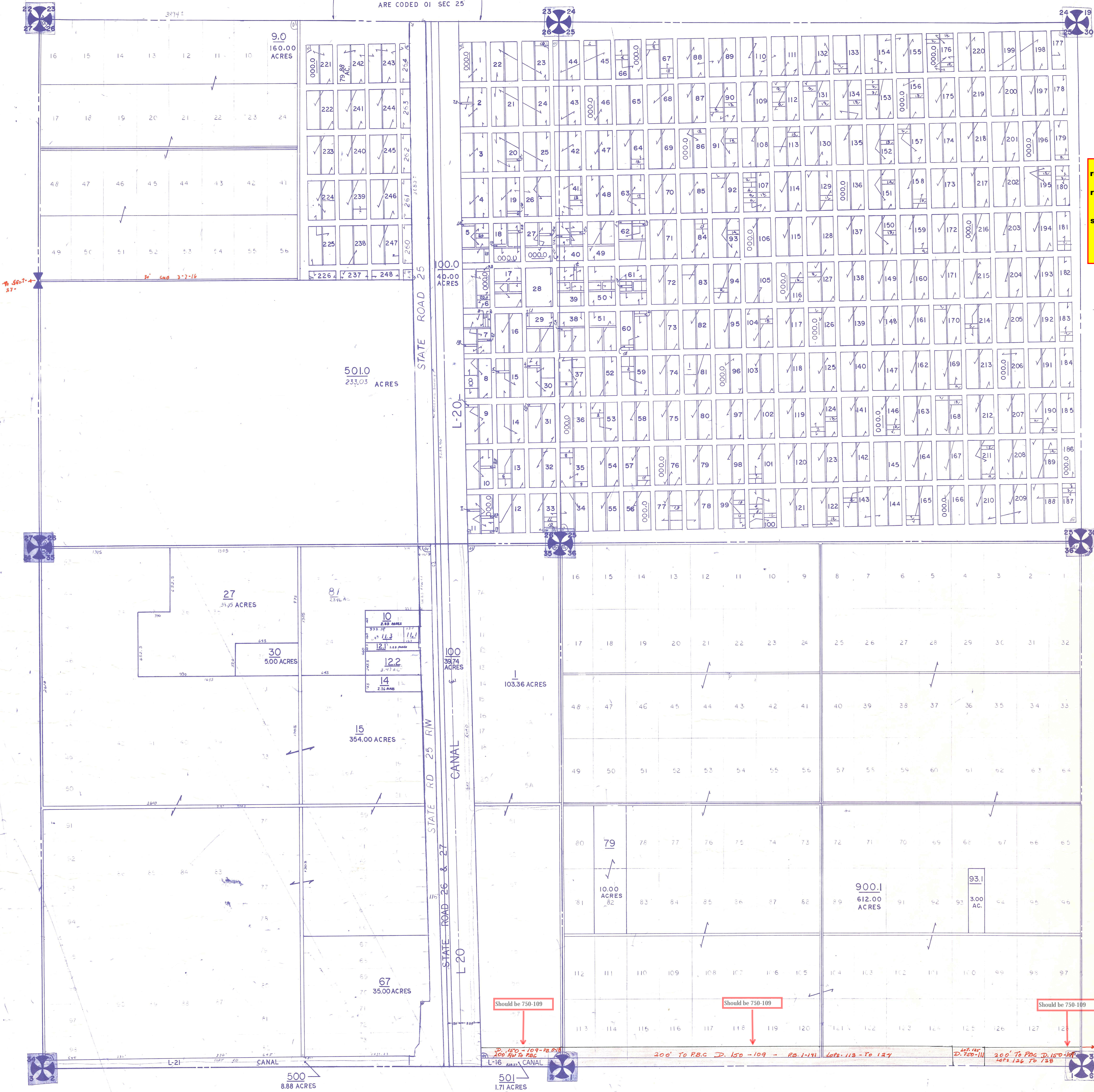


NOTE:
BLKS IN E 1/2 OF SEC 26
ARE CODED 01 SEC 25



Palm Beach County (County) makes no representation or warranties whatsoever on the attached / enclosed information reflected herein pertaining to easements, rights-of-way, setback lines, reservations, agreements, and other similar matters. The information provided herein should not be relied upon by the requesting party to confirm the existence / non-existence of facts contained herein.



SEC 25
ALL E & E 1/2 OF OKEELANTA TOWNSITE
OF SEC 26 PB 5-86 Thru 95

SEC 26
ALL NW 1/4 OF OKEECHOBEE FRUIT LANDS CO.
PB 1-143

SEC 35
ALL SW 1/4 OF OKEELANTA ADDITION
PB 5-17 & 18
SE 1/4-02 OKEELANTA-NEW
PB 7-17 ★

SEC 36
ALL SE 1/4 OF OKEECHOBEE FRUIT LANDS CO.
PB 1-141

★ Resolution Vending Plat No. 271022-6-14-10-21-52
Except lots 1-16, 50-51, 77-116-122-126

NOTE:
NOT TO BE REPRODUCED IN
ANY FORM EXCEPT BY EXPRESS
WRITTEN CONSENT FROM THE
PALM BEACH COUNTY
ASSESSOR.
Information shown hereon is
compiled from the best available
sources and CANNOT be used
for surveys or land transfers of
any type.

QQ-24 PP-24
QQ-25 PP-25

PALM BEACH COUNTY
REBECCA E. WALKER
COUNTY ASSESSOR

RGE	TWP	SEC	AERIAL
36	44	26 25 35 36	NO 6-31
SCALE 1"=400'			
DRAWN BY OLLIS & KESHIAN			
UPDATED			