

COordinated Network for Navigating Care and Treatment (CONNeCT) Project



Presented by: Southeast Florida Behavioral Health Network, Inc. (SEFBHN)

CONNecT Project Overview

Southeast Florida Behavioral Health Network will develop, oversee and maintain the CONNecT Project

Improve long-term resiliency and quality of care services



```
graph TD; A[Improve long-term resiliency and quality of care services] --> B[Centralize care coordination services for Substance Use, Mental Health conditions and co-occurring treatment in Palm Beach County]; B --> C[Support a recovery-oriented system of care and oversight of utilization of treatment and services to ensure maximum benefit]; C --> D[Enhance access, coordination, and service integration across the continuum of care];
```

Centralize care coordination services for Substance Use, Mental Health conditions and co-occurring treatment in Palm Beach County

Support a recovery-oriented system of care and oversight of utilization of treatment and services to ensure maximum benefit

Enhance access, coordination, and service integration across the continuum of care

CONNeCT Project Objectives



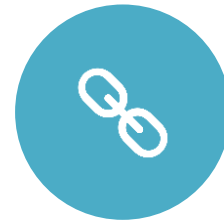
ESTABLISH A
RECOVERY-
ORIENTED SYSTEM
OF CARE



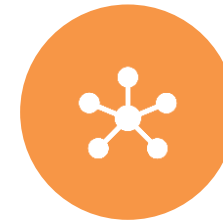
IMPROVE
BEHAVIORAL
HEALTH NEED
IDENTIFICATION



ENSURE WARM
HANDOFFS AND
PERSON-CENTERED
PLANNING



LINK TO SUPPORT
SERVICES
ADDRESSING
SOCIAL
DETERMINANTS OF
HEALTH(SDOH)



EXPAND
BEHAVIORAL
HEALTH NETWORK
CAPACITY



TRACK
PERFORMANCE
USING QUALITY
ALIGNED METRICS

CONNeCT Care Coordination Functions for Service Delivery



CONNeCT Communication Process



Timely updates
through shared
platforms across
the network



Recurrent and
ad hoc case
reviews with
treatment
providers



Frequent client
check-ins to
ensure progress
and successful
treatment
outcomes



Coordinated
utilization
management
activities upon
admission,
transitions and
discharge
planning



Documentation
of all
interactions in
care systems

CONNeCT Project Deliverables

- Quarterly performance and narrative reports
- Continuous Quality Improvement (CQI) meetings
- Annual monitoring reports
- MOA/BAA agreements for partnerships
- Advisory presentations and technical assistance

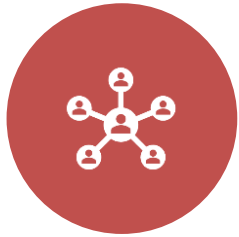
Key Project Collaborations

- SEFBHN will collaborate with key partners to ensure timeliness on referrals and service delivery for CONNeCT participants
 - 211/988
 - Palm Beach County Community Services
 - Palm Beach County Health Care District
 - SEFBHN Network Providers

SEFBHN Capabilities & Expertise

- Experts on the behavioral health system of care in Palm Beach County
- Over a decade of experience in ensuring financial, programmatic, and clinical accountability
- Long-standing utilization management capabilities of key housing voucher funding helping individuals achieve long-term community sustainability.

Performance Indicators



CLIENT
ENGAGEMENT &
SATISFACTION
RATES



TIMELY
ASSESSMENTS



OUTCOME
IMPROVEMENT
(BARC-10, PHQ-
9, DLA-20, BAM)

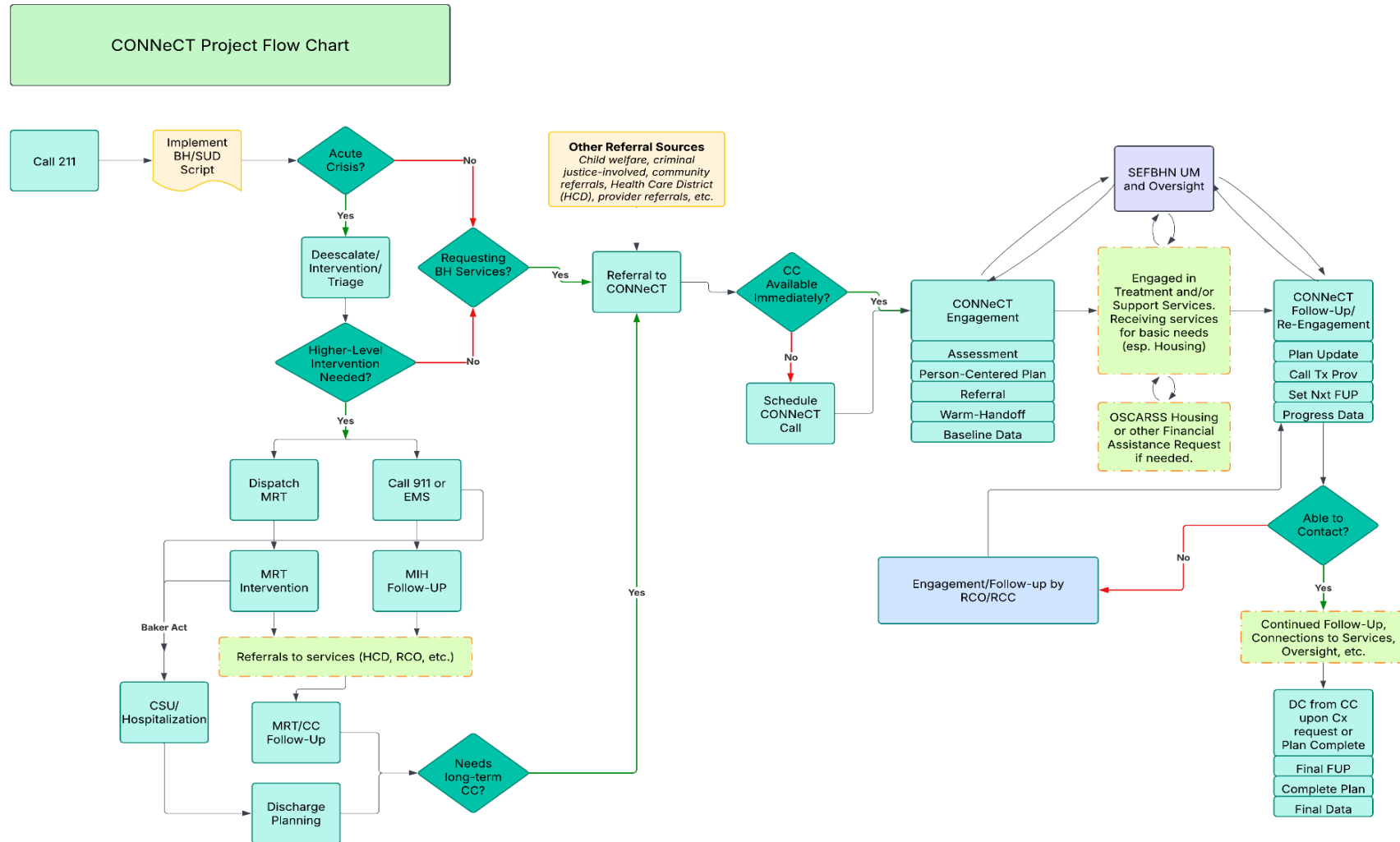


REDUCED ACUTE
CARE
DEPENDENCE



EVIDENCE-BASED
PERFORMANCE
TRACKING

CONNeCT Flowchart

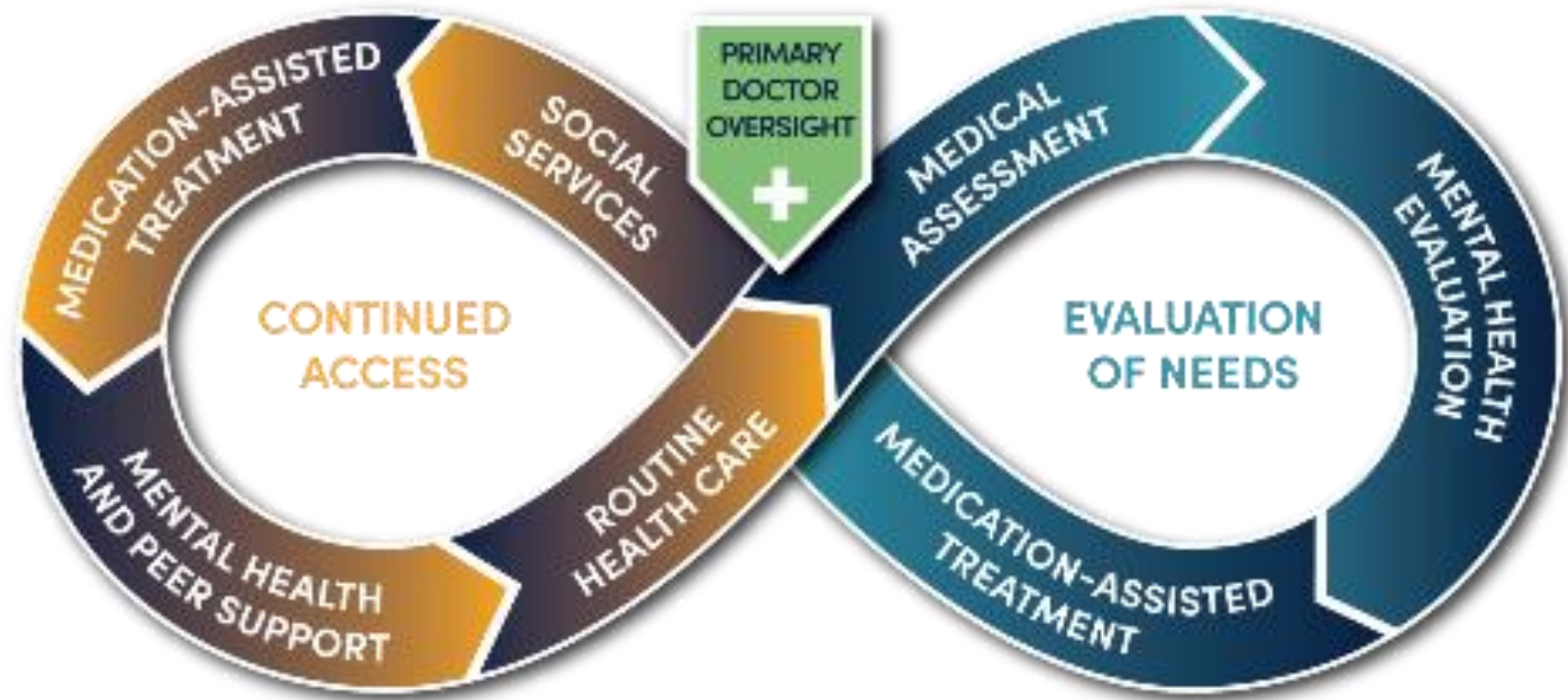




Coordinated Opioid Response Network (CORe)

Presented by: Southeast Florida Behavioral Health Network, Inc. (SEFBHN)

The CORE Network establishes a coordinated system of care for those seeking treatment for opioid use disorder.



CORe Network Model

Essential Elements:



Rescue Response



Stabilization & Assessment



Long-term Treatment



Recovery Supports

Palm Beach County



24/7 Access Points: Emergency Medical Systems/ Hospital Emergency Rooms/Crisis Units

Health Care District of Palm Beach County

Access Recovery Solutions



MAT Providers:

Transpire Help

Wayside House

Central Florida Substance Abuse Treatment Center

Drug Abuse Foundation of Palm Beach County



Next Steps: Introductory Meeting on June 20 @ 2:30pm at the Main Public Library 3650 Summit Boulevard, West Palm Beach, 33406



SEFBHN will continue to work with the key players and continue to try and reach out to get more hospitals involved as we progress through the development in Palm Beach County.



Southeast Florida

BEHAVIORAL HEALTH NETWORK

