

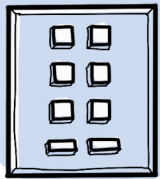
# COMMUNITY LIVING IN THE ERA OF COVID-19

**PREVENTION IS BETTER THAN TREATMENT!**



**WASH YOUR HANDS**  
IMMEDIATELY AFTER  
YOU GET HOME

**WIPE  
IT  
DOWN**



ELEVATOR BUTTONS,  
DOORKNOBS, KEYPADS  
PACKAGES, MAILBOXES AND  
WASHERS & DRYERS  
CAN BE **CONTAMINATED**  
WITH VIRUSES



TRY TO ENTER & EXIT  
THE BUILDING WHEN  
TRAFFIC IS LIGHT



**WEAR A MASK IN ELEVATORS,  
LAUNDRY ROOMS AND OTHER SHARED SPACES**

COVID-19 CAN SPREAD BETWEEN PEOPLE WHO  
ARE TALKING, COUGHING AND SNEEZING.  
MASKS REDUCE THE AMOUNT OF  
DROPLETS IN THE AIR.

**ASK THE BUILDING MANAGER ...**

- HOW DO THEY KEEP TRACK AND ALERT RESIDENTS OF COVID CASES IN THE BUILDING?
- WHAT IS BEING DONE TO ENSURE PROPER VENTILATION AND SAFETY IN HALLWAYS AND STAIRWAYS?
- DOES OUR BUILDING FOLLOW MAINTENANCE GUIDELINES AS ADVISED BY THE ENVIRONMENTAL PROTECTION AGENCY?



**HAVE VISITORS WASH THEIR HANDS**  
WHEN THEY ARRIVE AND REMIND THEM  
TO CLEAN THEM AGAIN WHEN  
GETTING INTO THEIR CAR



SEEUROWDS.COM

# LEAVING THE HOUSE DURING CORONAVIRUS

STAYING HOME & LIMITING SOCIAL INTERACTIONS CAN HELP PREVENT COVID-19 FROM SPREADING...BUT

**WHEN YOU HAVE TO GO OUT**



**BE SMART**

SYMPTOMS OR NO SYMPTOMS- COVID-19 CAN CAUSE HOSPITALIZATION OR DEATH

## ★ BEFORE YOU LEAVE HOME



### FACE MASKS

CAN HELP STOP THE SPREAD OF DROPLETS FROM COUGHS AND SNEEZES

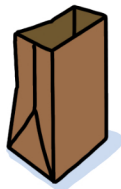
SOME PLACES WILL REQUIRE YOU TO WEAR ONE



ALWAYS WASH OR SANITIZE YOUR HANDS BEFORE & AFTER USING A MASK



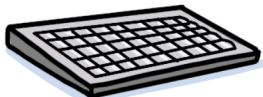
CARRY HAND SANITIZER FOR WHEN YOU CAN'T GET TO A SINK TO WASH YOUR HANDS



BRING A BROWN PAPER BAG TO STORE YOUR MASK IN IF YOU NEED TO REMOVE IT WHILE YOU ARE OUT

## ★ WHILE YOU ARE OUT

AVOID TOUCHING THINGS YOU DON'T HAVE TO EVERYTHING YOU TOUCH OR OTHERS TOUCH MIGHT BE CONTAMINATED WITH COVID-19



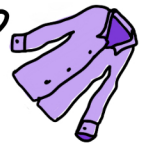
USE DISINFECTANT SPRAY TO WIPE DOWN CAR DOOR HANDLES, CARDS IN YOUR WALLET & KEY PADS

## ★ WHEN YOU GET HOME

LEAVE YOUR SHOES AT THE DOOR



CLOTHES YOU WORE OUTSIDE SHOULD BE WASHED



WASH YOUR HANDS



YOUR REUSABLE FACE MASK CAN BE WASHED BY HAND AND HUNG TO DRY



ITEMS YOU BRING INTO YOUR HOME SHOULD BE CLEANED AND SO SHOULD SURFACES THEY TOUCHED

