



Performance Report

Annual Report: **October 1, 2013 to September 30, 2014**

Programmatic Activity and Recidivism

Performance Monitoring & Evaluation Sub-Committee

Prepared by:

Damir Kukec
Research and Planning Manager
Research & Planning Unit
Criminal Justice Commission

For

Chair Nellie King
Program Monitoring &
Evaluation Sub-Committee

February 23, 2015

Acknowledgements and Thanks

The processing of data and the production of this report for the sub-committee and the Criminal Justice Commission would not be possible without the full cooperation of the vendors and staff that contributed. Equally, this report reflects the vision of the Program Monitoring and Evaluation Sub-Committee and the leadership shown by past and current members. I would also like to acknowledge and thank Ms. Katherine Hatos for the hard work she has done preparing the endless number of privacy agreements with the Florida Department of Law Enforcement and for keeping track of the numerous data files for each of the individual programs contained in this report. Thank you.

Table of Contents

Executive Summary	i
Introduction:.....	1
What’s in the Report?	1
Limitations:.....	3
Funding Criminal Justice Programs Fiscal Year 2014:	3
At a Glance Performance:.....	4
Table One: Number of Participants Served During Fiscal Year 2014 (October 1, 2013 to September 30, 2014).....	4
Table Two: Average Daily Participants During Fiscal Year 2014 (October 1, 2013 to September 30, 2014)	5
Table Three: Successful Completion Rate (%) During Fiscal Year 2014 (October 1, 2013 to September 30, 2014).....	6
Table Four: Three Year Follow-up Recidivism Rate (%) for Successful Participants Exiting Programming (July 1, 2011 to September 30, 2014)	7
Law Enforcement Exchange (LEX).....	8
Data Processing:.....	9
Data Quality:.....	9
Quarterly Programmatic Report Definitions:.....	9
Recidivism Report Definitions:	10

Executive Summary

The purpose of this report is to provide the Criminal Justice Commission with a brief overview of program performance during the 2014 County fiscal year.

The Criminal Justice Commission budget for the 2014 fiscal year was approximately 4.1 million. This included funding from *ad valorem*, trust funds, and formula and competitive grants.

From the total budget, the majority (71%) of the funds were invested in direct service programming designed to change the behavior of offenders or at risk youth.

This report focuses on outcomes at the individual participant level and includes data on the number of participants served, the average daily participant counts, participant completion rate and the three year recidivism rate for those participants who successfully exit programming.

Key Findings

- Almost 73% (16 out of 22) of the reporting programs either met or exceeded their target number of participants served during the fiscal year.
- When examining the number of average daily participants during the fiscal year, almost 60% (13 out of 22) of the reporting programs either met or exceeded their performance targets.
- Only 42% of the reporting programs either met or exceeded their completion rate target (8 out of 19).
- The vast majority (90%) of reporting programs exceeded their three year recidivism rate target (19 out of 21).

The Palm Beach County Law Enforcement Exchange (LEX) is a countywide data sharing program to aid law enforcement with tactical and investigative support by sharing information generated by Palm Beach County law enforcement agencies record management systems (RMS).

Currently, all 26 law enforcement agencies in the County are able to access LEX and can search over 200 agencies' records management systems statewide. As of September 30, 2014, approximately 42% of all law enforcement agencies in the county contribute their RMS data to the LEX system.

Introduction:

The Criminal Justice Commission established the Program Monitoring and Evaluation Sub-Committee (PME) to develop and implement a framework to monitor and evaluate the impact of criminal justice programs funded in part or whole by the Criminal Justice Commission. This report represents the culmination of the work completed by the Sub-Committee, the Commission program partners and dedicated staff. It includes both summary and detail performance results for County fiscal year 2014 – October 1, 2013 to September 30, 2014.

What's in the Report?

The report includes four sections: 1) fiscal year 2014 program budgets; 2) at a glance summary reports; 3) summary reports; and, 4) detailed tables – data from the previous three quarters is included. All reports include data on the four specific minimum performance indicators approved by the Performance Monitoring and Evaluation Sub-Committee (PME). The four indicators are:

1. Cumulative Participants Served
2. Average Daily Population (ADP)
3. Completion Rate
4. Three Year Recidivism Rate

The summary data tables describe the actual performance levels reported by each program compared to the targets approved by the PME. The summary reports contain “conditional formatting” for ease of reference, identifying programs that are meeting their targets. For example, for participants served, ADP, and completion rate; when programs meet or exceed performance levels these data are reported in **green**. In the case of three year recidivism rates, programs that report a three year recidivism rate above the target, these data are reported in **red**.

The detailed reports provide an overview of the basic program activities for two previous fiscal years and the current fiscal year. The detailed programmatic report includes the following variables on a quarterly and cumulative basis (specific definitions are provided in subsequent sections below):

1. Admissions
2. Exits
3. Completed
4. Not Completed
5. Active Participant
6. Completion Rate %
7. Cumulative Completion Rate %
8. Participants Served
9. Cumulative Participants Served
10. Average Daily Population

The detailed recidivism report includes recidivism data for specific groups that are followed for three distinct timeframes after exiting programming within: 1) six months, 2) one year, and 3) three years. Recidivism rates are computed for program participants that successfully completed programming and for those that did not complete programming. The PME has defined “recidivism” to mean program participants who are arrested and convicted of one or more charges after exiting programming (in the case of delinquency drug court, recidivism is defined as arrested and “adjudicated delinquent” after the participant has exited programming). The annual report from the Law Enforcement Exchange (LEX) program: a countywide program designed to improve police intelligence/information sharing, includes information on program activity along with statistics concerning LEX users and meeting attendance: 1) number of user logins, 2) distinct user/query requests, and 3) regional intelligence meetings.

With the exception of the three youth empowerment centers, this report provides programmatic data on the following program partners.

Drug Courts

- Delinquency Drug Court
- Track 1 - Drug Court
- Track 2 - Co-Occurring
- Track 3 - Prescription
- Civil Drug Court - Assessment
- Civil Drug Court - Treatment

Reentry

- Pre-Release - RESTORE
- Riviera Beach - RESTORE
- Goodwill - RESTORE
- Lord's Place - RESTORE
- Riviera Beach - COMMUNITY
- Goodwill - COMMUNITY
- Lord's Place - COMMUNITY
- Public Defender’s Office (Seal & Expunge, Early Termination)
- Goodwill - JAIL
- Lord's Place - JAIL
- Lord's Place - TJC
- BTAF - Juvenile Reentry
- BTAF - Choice to Change
- BTAF - Goodwill
- BTAF - Vita Nova

Youth Empowerment

- YEC - Belle Glade
- YEC - Lake Worth
- YEC - Riviera Beach

Law Enforcement

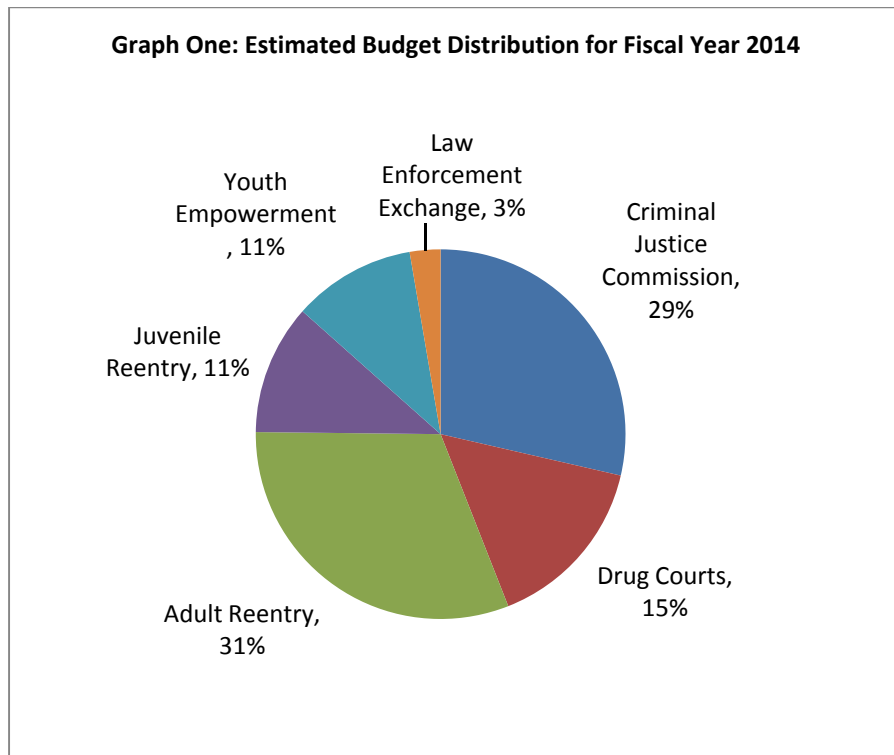
- LEX - Law Enforcement Exchange

Limitations:

Tracking the performance of programs at the individual level, when possible, is a vital part of gauging the Commission's return on investment. The measures adopted by the PME are by no means perfect; however, the measures were developed in consultation with the individual program representatives for each of the agencies listed in this report. Furthermore, it has been noted on many occasions that these measures are intended to improve upon programming and not necessarily to eliminate funding for a particular program or another. Lastly, the quantitative results in this report are intended to provide policymakers with new data that is part of all the information used to determine policy and funding priorities for the Criminal Justice Commission.

Funding Criminal Justice Programs Fiscal Year 2014:

This section of the report provides a brief overview of budget allocations by priority area and specific programs. In fiscal year 2014, the total estimated Criminal Justice Commission budget was 4.1 million. The sources of these funds include *ad valorem*, trust funds; as well as, formula and competitive grants. The following graph illustrates how the 2014 budget was allocated across the general program headings and priorities for the fiscal year.



It is important to note that the vast majority of funding associated with the reentry programs come from competitive grants obtained by the Criminal Justice Commission in partnership with various agencies across the County.

At a Glance Performance:

The following tables provide a quick view of the performance of all of the programs that provide direct services to offenders and at risk youth. The section also highlights some of the accomplishments of the Law Enforcement Exchange (LEX) program designed to provide police improved information sharing and investigative tools.

Table One shows that approximately 73% of the following program agencies achieved their target for the fiscal year – 16 out of 22 programs. It is important to note that the number of participants served during the fiscal year includes all participants regardless of when they entered the program and when they exited. These figures also include both participants who successfully completed programming and those that did not (e.g., unsuccessful exits).

Table One: Number of Participants Served During Fiscal Year 2014 (October 1, 2013 to September 30, 2014)

Agency	Actual	Target	Difference
Delinquency Drug Court	30	14	16
Track 1 - Drug Court	319	140	179
Track 2 - Co-Occurring	73	20	53
Track 3 - Prescription	67	20	47
Civil Drug Court	100	100	0
Pre-Release - RESTORE	247	200	47
Riviera Beach - RESTORE	44	40	4
Goodwill - RESTORE	62	60	2
Lord's Place - RESTORE	93	75	18
Public Defender		Pending	
Riviera Beach - COMMUNITY	143	75	68
Goodwill - COMMUNITY	103	75	28
Lord's Place - COMMUNITY	27	50	-23
Goodwill - JAIL	27	75	-48
Lord's Place - JAIL	13	75	-62
Lord's Place - TJC	111	75	36
BTAF - Juvenile Reentry	96	84	12
BTAF - Choice to Change	28	34	-6
BTAF - Goodwill	33	48	-15
BTAF - Vita Nova	1	2	-1
YEC - Belle Glade	82	60	22
YEC - Lake Worth	55	50	5
YEC - Riviera Beach	151	100	51

The Public Defender's Office Reentry component is intended to help offenders reintegrate with society following case disposition. When offenders were eligible, the office provided offenders with seal and expunge services for criminal records, early termination requests for Florida Department of Corrections probation offenders; as well as, reentry referral services for offenders returning to Palm Beach County.

Table Two describes the average daily participants for each program. The table shows that approximately 60% of the following programs exceeded the ADP target – 13 out of 22. This measure is perhaps a better view of program delivery (compared to participants served) as it takes into account both the number served and the time a participant spends in the program. For example, in the case of Track 1 – Drug Court which is a 12 month program, the ADP of 142.7 exceeds the target of 140; as such, we can say that this program is slightly exceeding its program capacity. It also includes all participant types (both successful and unsuccessful exits).

Table Two: Average Daily Participants During Fiscal Year 2014 (October 1, 2013 to September 30, 2014)

Agency	Actual	Target	Difference
Delinquency Drug Court	12.2	14	-1.75
Track 1 - Drug Court	142.7	140	2.67
Track 2 - Co-Occurring	35.9	20	15.91
Track 3 - Prescription	41.2	20	21.19
Civil Drug Court	35.1	16	19.10
Pre-Release - RESTORE	134.6	100	34.63
Riviera Beach - RESTORE	33.2	30	3.24
Goodwill - RESTORE	37.5	30	7.54
Lord's Place - RESTORE	48.9	30	18.87
Public Defender		Pending	
Riviera Beach - COMMUNITY	101.4	30	71.41
Goodwill - COMMUNITY	65.6	30	35.62
Lord's Place - COMMUNITY	12.5	30	-17.52
Goodwill - JAIL	12.1	30	-17.91
Lord's Place - JAIL	3.8	30	-26.23
Lord's Place - TJC	62.5	30	32.53
BTAF - Juvenile Reentry	35.2	50	-14.76
BTAF - Choice to Change	11.0	15	-4.04
BTAF - Goodwill	12.5	20	-7.51
BTAF - Vita Nova	1.0	2	-1.00
YEC - Belle Glade	44.7	28	16.68
YEC - Lake Worth	22.3	35	-12.74
YEC - Riviera Beach	55.2	40	15.23

During the fiscal year, the Lord's Place (Jail and TJC Reentry) program was amalgamated into one program; as such, the fiscal year 2015 performance monitoring will report this as one program rather than two. With respect to the number served and ADP figures, it is important to note that some programs (e.g., BTAF, Juvenile Reentry) were not operational during the full year and as such may have not reached their target for this reason.

Table Three illustrates the completion rate of each program during the fiscal year. Overall, 50% of the programs listed below achieved their completion target rates – 8 out of 19. The following shows the complexities and difficulty of working with this population; especially since the majority of the programs are voluntary in nature. Lastly, the Youth Empowerment Centers are excluded from the above computation as they do not have a curriculum per se – program participants “age out” of programming rather than complete a specific curriculum.

Table Three: Successful Completion Rate (%) During Fiscal Year 2014 (October 1, 2013 to September 30, 2014)

Agency	Actual	Target	Difference
Delinquency Drug Court	26.7	50.0	-23.33
Track 1 - Drug Court	37.7	50.0	-12.26
Track 2 - Co-Occurring	41.7	50.0	-8.33
Track 3 - Prescription	38.2	50.0	-11.76
Civil Drug Court - Assessment	100.0	50.0	50.00
Civil Drug Court - Treatment	88.5	50.0	38.46
Pre-Release - RESTORE	90.8	70.0	20.80
Riviera Beach - RESTORE	44.4	40.0	4.44
Goodwill - RESTORE	16.7	40.0	-23.33
Lord's Place - RESTORE	37.7	40.0	-2.30
Public Defender		Pending	
Riviera Beach - COMMUNITY	65.2	40.0	25.22
Goodwill - COMMUNITY	45.9	40.0	5.90
Lord's Place - COMMUNITY	43.8	40.0	3.75
Goodwill - JAIL	0.0	40.0	-40.00
Lord's Place - JAIL	no exit	40.0	N/A
Lord's Place - TJC	27.5	40.0	-12.46
BTAF - Juvenile Reentry	8.3	30.0	-21.67
BTAF - Choice to Change	16.7	30.0	-13.33
BTAF - Goodwill	20.0	30.0	-10.00
BTAF - Vita Nova	100.0	50.0	50.00
YEC - Belle Glade	100.0		N/A
YEC - Lake Worth	100.0		N/A
YEC - Riviera Beach	100.0		N/A

Table Four below shows the recidivism rate (defined in general as arrest and conviction) within three years after successful program exit. Overall, 90% of programs fell well below their minimum recidivism targets – 19 out of 21.

Table Four: Three Year Follow-up Recidivism Rate (%) for Successful Participants Exiting Programming (July 1, 2011 to September 30, 2014)

Agency	Actual	Target	Difference
Delinquency Drug Court	20.0	25.0	5.00
Track 1 - Drug Court	1.4	15.0	13.56
Track 2 - Co-Occurring	0.0	15.0	15.00
Track 3 - Prescription	0.0	15.0	15.00
Civil Drug Court - Assessment	14.7	15.0	0.32
Civil Drug Court - Treatment	4.0	15.0	11.04
Pre-Release - RESTORE	13.9	34.0	20.14
Riviera Beach - RESTORE	10.0	34.0	24.00
Goodwill - RESTORE	11.8	34.0	22.24
Lord's Place - RESTORE	10.3	34.0	23.66
Public Defender		Pending	
Riviera Beach - COMMUNITY	9.3	34.0	24.74
Goodwill - COMMUNITY	6.7	34.0	27.33
Lord's Place - COMMUNITY	0.0	34.0	34.00
Goodwill - JAIL	no successful exit	34.0	N/A
Lord's Place - JAIL	no exit	34.0	N/A
Lord's Place - TJC	2.0	34.0	32.04
BTAF - Juvenile Reentry	0.0	40.0	40.00
BTAF - Choice to Change	0.0	40.0	40.00
BTAF - Goodwill	0.0	40.0	40.00
BTAF - Vita Nova	0.0	40.0	40.00
YEC - Belle Glade	1.7	0.0	-1.69
YEC - Lake Worth	0.0	0.0	0.00
YEC - Riviera Beach	1.2	0.0	-1.16

Law Enforcement Exchange (LEX)

The LEX program is managed by a board of directors under the auspices of the Palm Beach County Law Enforcement Exchange – a not for profit entity. The Palm Beach County Law Enforcement Exchange (LEX) is a countywide data sharing program to aid law enforcement with tactical and investigative support by sharing information generated by Palm Beach County law enforcement agencies record management systems (RMS). This includes incident reports, investigative reports; field interviews, person’s reports and any other data stored by the agency.

LEX provides a platform for which local law enforcement agency personnel can share and search data from countywide agency Records Management Systems (RMS). The LEX program has also included direct access to an additional system in Florida known as the Federated Integrated Network for Data Exchange (FINDER). With this connection in the same application, this gives officers a much greater ability to search other RMS data sources outside of Palm Beach County. Currently, all 26 law enforcement agencies in the County are able to access LEX and can search over 200 agencies’ records management systems statewide. As of the end of fiscal year 2014, the following 11 (42%) municipal law enforcement agencies are now contributing their records management systems information to LEX:

1. Boca Raton Police Department
2. Palm Beach Gardens Police Department
3. Jupiter Police Department
4. Juno Beach Police Department
5. West Palm Beach Police Department
6. Delray Police Department
7. Lantana Police Department
8. Palm Beach Police Department
9. North Palm Beach Police Department
10. Riviera Beach Police Department
11. Atlantis Police Department

LEX also reported a steady increase in the number of unique “logins” to the system by law enforcement during the fiscal year – with an average of 200 per month.

Lastly, the PME has not yet set any minimum performance levels for the LEX program; since FDLE approval and the selection of the LEX program director was significantly delayed in fiscal year 2014.

Data Processing:

Partners were able to submit data to the Research and Planning Unit with adequate time to report on programmatic activity 30 days following the end of the 4th quarter. All necessary files have been submitted to the Florida Department of Law Enforcement (FDLE), in order to compute the recidivism rates. Once the arrest and judicial history is matched and returned to the Research and Planning Unit, the computed results will be shared with the PME and partners. The 1st quarter reports for fiscal year 2015 will be delayed given the change in schedule for the annual planning meeting and the need to revisit the FDLE privacy agreements.

Data Quality:

We are always reviewing data quality and completeness for all programs. However, the data for the three youth empowerment centers should still be considered draft. The data matching for the youth empowerment centers are pending for the 4th quarter since we are still awaiting data from FDLE. As such, the recidivism data in this report is from the 2014 third quarter or three year follow-up period (April 1, 2011 to June 30, 2014). We hope to address these issues before the end of March 2015.¹

Quarterly Programmatic Report Definitions:

The data in this table are computed on a quarterly basis along with a historical view for two prior county fiscal years (October 1 to September 30) in the detailed tables. The following defines each variable (from left to right columns):

1. **Agency:** describes the name or type of programming reported.
2. **Fiscal Year:** identifies the county fiscal year being reported.
3. **Quarters:** identifies the specific months in each quarter. This column also includes an additional value titled “Fiscal Year Total” which represents the running total for each fiscal year.
4. **Admissions:** describes the number of program participants that **start** programming during the quarter and throughout the fiscal year.
5. **Exits:** describes the number of program participants that **end** programming during the quarter and throughout the fiscal year.
6. **Completed:** describes the number of program participants that **successfully completed** and exited all aspects of programming during the quarter and throughout the fiscal year.
7. **Not Completed:** describes the number of program participants that **do not successfully complete** programming during the quarter and throughout the fiscal year.

¹ As of October 1, 2014, the funding and management of the Youth Empowerment Centers (YEC) was transferred to the newly formed department: Youth Services. We have been directed to continue processing YEC data until further notice. We plan to complete our reporting for fiscal year 2014 for the PME.

8. **Completion Rate %:** describes the **percentage** of program participants that **successfully completed** and exited all aspects of programming during each quarter.
9. **Cumulative Completion Rate %:** describes the **cumulative percentage** of program participants that **successfully completed** and exited all aspects of programming during the fiscal year.
10. **Participants Served:** describes the **number of program participants** that received services during each quarter.
11. **Cumulative Participants Served:** describes the **cumulative number of program participants** that received services during the fiscal year.
12. **Active Participants:** describes the number of program participants that are still active in programming at the end of the reporting period.
13. **Average Daily Population (ADP):** describes the average daily population during each quarter and during the fiscal year.

Recidivism Report Definitions:

The data in this table is computed each quarter using a group of all program participants that exited programming over a three year period and which correspond to the end of each fiscal quarter in 2014. Each exit group (i.e., completed and not completed) will be followed for a period of six months, one year, and three years after program exit.

1. **Agency:** describes the name or type of programming that is being reported.
2. **Group:** describes the timeframe of when a program participant exited programming. For the current county fiscal year, this includes:
 - a. October 1, 2010 to December 31, 2013
 - b. January 1, 2011 to March 31, 2014
 - c. April 1, 2011 to June 30, 2014
 - d. July 1, 2011 to September 30, 2014
3. **Completed:** describes the number of program participants that **successfully completed** and exited all aspects of programming during the timeframe identified for each Group.
4. **Not Completed:** describes the number of program participants that **did not successfully complete** programming during the timeframe identified for each Group and follow-up periods (six months, one year, and three years).
5. **Six Month Recidivism:** describes the number and percentage of completed and not completed program participants that recidivate within six months after program exit.
6. **One Year Recidivism:** describes the number and percentage of completed and not completed program participants that recidivate within one year after program exit.
7. **Three Year Recidivism:** describes the number and percentage of completed and not completed program participants that recidivate within three years after program exit.

8. **Three Year Recidivism Target %:** describes the target recidivism rate (as a percentage) of completed program participants that recidivate within three years after program exit.
9. **Recidivism:** Recidivism is defined as arrest and conviction after participant has exited programming. For delinquency drug court, recidivism is defined as arrest and adjudicated delinquent after participant has exited programming.

SUMMARY REPORTS



2014: Summary Participants Report

Wednesday, February 18, 2015

12:15:42 PM

AGENCY	FISCAL YEAR	QUARTERS	PARTICIPANTS SERVED	CUMULATIVE PARTICIPANTS SERVED	ANNUAL PARTICIPANTS SERVED TARGET
Delinquency Drug Court					
	2014	October, November, December	12	12	14
	2014	January, February, March	17	19	14
	2014	April, May, June	17	25	14
	2014	July, August, September	20	30	14
	2014	Fiscal Year Total		30	14
Track 1 - Drug Court					
	2014	October, November, December	176	176	140
	2014	January, February, March	172	222	140
	2014	April, May, June	189	271	140
	2014	July, August, September	198	319	140
	2014	Fiscal Year Total		319	140
Track 2 - Co-Occurring					
	2014	October, November, December	41	41	20
	2014	January, February, March	41	51	20
	2014	April, May, June	48	65	20
	2014	July, August, September	46	73	20
	2014	Fiscal Year Total		73	20
Track 3 - Prescription					
	2014	October, November, December	46	46	20
	2014	January, February, March	51	56	20
	2014	April, May, June	56	67	20
	2014	July, August, September	40	67	20
	2014	Fiscal Year Total		67	20

AGENCY	FISCAL YEAR	QUARTERS	PARTICIPANTS SERVED	CUMULATIVE PARTICIPANTS SERVED	ANNUAL PARTICIPANTS SERVED TARGET
Civil Drug Court - Assessment					
	2014	October, November, December	19	19	100
	2014	January, February, March	12	27	100
	2014	April, May, June	5	29	100
	2014	July, August, September	10	35	100
	2014	Fiscal Year Total		35	100
Civil Drug Court - Treatment					
	2014	October, November, December	32	32	100
	2014	January, February, March	35	45	100
	2014	April, May, June	44	56	100
	2014	July, August, September	51	65	100
	2014	Fiscal Year Total		65	100
Pre-Release - RESTORE					
	2014	October, November, December	152	152	200
	2014	January, February, March	151	188	200
	2014	April, May, June	168	223	200
	2014	July, August, September	176	247	200
	2014	Fiscal Year Total		247	200
Riviera Beach - RESTORE					
	2014	October, November, December	36	36	40
	2014	January, February, March	38	39	40
	2014	April, May, June	38	41	40
	2014	July, August, September	35	44	40
	2014	Fiscal Year Total		44	40
Goodwill - RESTORE					
	2014	October, November, December	43	43	60
	2014	January, February, March	44	50	60
	2014	April, May, June	44	57	60
	2014	July, August, September	48	62	60
	2014	Fiscal Year Total		62	60

AGENCY	FISCAL YEAR	QUARTERS	PARTICIPANTS SERVED	CUMULATIVE PARTICIPANTS SERVED	ANNUAL PARTICIPANTS SERVED TARGET
Lord's Place - RESTORE					
	2014	October, November, December	74	74	75
	2014	January, February, March	62	80	75
	2014	April, May, June	52	86	75
	2014	July, August, September	55	93	75
	2014	Fiscal Year Total		93	75
Riviera Beach - COMMUNITY					
	2014	October, November, December	86	86	75
	2014	January, February, March	109	113	75
	2014	April, May, June	124	129	75
	2014	July, August, September	135	143	75
	2014	Fiscal Year Total		143	75
Goodwill - COMMUNITY					
	2014	October, November, December	71	71	75
	2014	January, February, March	74	84	75
	2014	April, May, June	81	92	75
	2014	July, August, September	89	103	75
	2014	Fiscal Year Total		103	75
Lord's Place - COMMUNITY					
	2014	October, November, December	9	9	50
	2014	January, February, March	15	15	50
	2014	April, May, June	23	23	50
	2014	July, August, September	27	27	50
	2014	Fiscal Year Total		27	50
Goodwill - JAIL					
	2014	October, November, December	4	4	75
	2014	January, February, March	9	9	75
	2014	April, May, June	21	21	75
	2014	July, August, September	27	27	75
	2014	Fiscal Year Total		27	75

AGENCY	FISCAL YEAR	QUARTERS	PARTICIPANTS SERVED	CUMULATIVE PARTICIPANTS SERVED	ANNUAL PARTICIPANTS SERVED TARGET
Lord's Place - JAIL					
	2014	October, November, December	1	1	75
	2014	January, February, March	2	2	75
	2014	April, May, June	5	5	75
	2014	July, August, September	13	13	75
	2014	Fiscal Year Total		13	75
Lord's Place - TJC					
	2014	October, November, December	86	86	75
	2014	January, February, March	74	90	75
	2014	April, May, June	84	110	75
	2014	July, August, September	48	111	75
	2014	Fiscal Year Total		111	75
BTAF - Juvenile Reentry					
	2014	October, November, December	6	6	84
	2014	January, February, March	29	29	84
	2014	April, May, June	66	66	84
	2014	July, August, September	93	96	84
	2014	Fiscal Year Total		96	84
BTAF - Choice to Change					
	2014	January, February, March	8	8	34
	2014	April, May, June	16	16	34
	2014	July, August, September	26	28	34
	2014	Fiscal Year Total		28	34
BTAF - Goodwill					
	2014	January, February, March	7	7	48
	2014	April, May, June	19	19	48
	2014	July, August, September	32	33	48
	2014	Fiscal Year Total		33	48

AGENCY	FISCAL YEAR	QUARTERS	PARTICIPANTS SERVED	CUMULATIVE PARTICIPANTS SERVED	ANNUAL PARTICIPANTS SERVED TARGET
BTAF - Vita Nova					
	2014	April, May, June	1	1	2
	2014	July, August, September	1	1	2
	2014	Fiscal Year Total		1	2
YEC - Belle Glade					
	2014	October, November, December	51	51	60
	2014	January, February, March	52	59	60
	2014	April, May, June	67	80	60
	2014	July, August, September	49	82	60
	2014	Fiscal Year Total		82	60
YEC - Lake Worth					
	2014	October, November, December	21	21	50
	2014	January, February, March	39	44	50
	2014	April, May, June	46	54	50
	2014	July, August, September	23	55	50
	2014	Fiscal Year Total		55	50
YEC - Riviera Beach					
	2014	October, November, December	72	72	100
	2014	January, February, March	78	89	100
	2014	April, May, June	100	135	100
	2014	July, August, September	92	151	100
	2014	Fiscal Year Total		151	100



2014: Summary ADP REPORT

Wednesday, February 18, 2015

12:16:48 PM

AGENCY	FISCAL YEAR	QUARTERS	AVERAGE DAILY PARTICIPANT	AVERAGE DAILY PARTICIPANT TARGET
Delinquency Drug Court				
	2014	October, November, December	9.5	14
	2014	January, February, March	12.4	14
	2014	April, May, June	11.6	14
	2014	July, August, September	15.5	14
	2014	Fiscal Year Total	12.2	14
Track 1 - Drug Court				
	2014	October, November, December	130.6	180
	2014	January, February, March	135.1	180
	2014	April, May, June	146.9	180
	2014	July, August, September	158.1	180
	2014	Fiscal Year Total	142.7	180
Track 2 - Co-Occurring				
	2014	October, November, December	33.7	20
	2014	January, February, March	35.8	20
	2014	April, May, June	35.3	20
	2014	July, August, September	38.9	20
	2014	Fiscal Year Total	35.9	20
Track 3 - Prescription				
	2014	October, November, December	38.3	20
	2014	January, February, March	43.9	20
	2014	April, May, June	45.4	20
	2014	July, August, September	37.1	20
	2014	Fiscal Year Total	41.2	20
Civil Drug Court - Assessment				
	2014	October, November, December	7.8	16
	2014	January, February, March	3.5	16
	2014	April, May, June	3.8	16
	2014	July, August, September	3.7	16

AGENCY	FISCAL YEAR	QUARTERS	AVERAGE DAILY PARTICIPANT	AVERAGE DAILY PARTICIPANT TARGET
	2014	Fiscal Year Total	4.7	16
Civil Drug Court - Treatment				
	2014	October, November, December	20.9	16
	2014	January, February, March	24.9	16
	2014	April, May, June	36.1	16
	2014	July, August, September	39.7	16
	2014	Fiscal Year Total	30.4	16
Pre-Release - RESTORE				
	2014	October, November, December	121.5	100
	2014	January, February, March	122.5	100
	2014	April, May, June	137.6	100
	2014	July, August, September	157.0	100
	2014	Fiscal Year Total	134.6	100
Riviera Beach - RESTORE				
	2014	October, November, December	32.5	30
	2014	January, February, March	35.3	30
	2014	April, May, June	31.4	30
	2014	July, August, September	33.8	30
	2014	Fiscal Year Total	33.2	30
Goodwill - RESTORE				
	2014	October, November, December	33.9	30
	2014	January, February, March	35.7	30
	2014	April, May, June	40.2	30
	2014	July, August, September	40.4	30
	2014	Fiscal Year Total	37.5	30
Lord's Place - RESTORE				
	2014	October, November, December	54.5	30
	2014	January, February, March	56.1	30
	2014	April, May, June	47.6	30
	2014	July, August, September	37.3	30
	2014	Fiscal Year Total	48.9	30

AGENCY	FISCAL YEAR	QUARTERS	AVERAGE DAILY PARTICIPANT	AVERAGE DAILY PARTICIPANT TARGET
Riviera Beach - COMMUNITY				
	2014	October, November, December	73.3	30
	2014	January, February, March	94.1	30
	2014	April, May, June	116.2	30
	2014	July, August, September	122.0	30
	2014	Fiscal Year Total	101.4	30
Goodwill - COMMUNITY				
	2014	October, November, December	57.6	30
	2014	January, February, March	67.5	30
	2014	April, May, June	75.4	30
	2014	July, August, September	62.0	30
	2014	Fiscal Year Total	65.6	30
Lord's Place - COMMUNITY				
	2014	October, November, December	6.4	30
	2014	January, February, March	11.0	30
	2014	April, May, June	19.5	30
	2014	July, August, September	13.1	30
	2014	Fiscal Year Total	12.5	30
Goodwill - JAIL				
	2014	October, November, December	1.9	30
	2014	January, February, March	6.7	30
	2014	April, May, June	14.8	30
	2014	July, August, September	25.0	30
	2014	Fiscal Year Total	12.1	30
Lord's Place - JAIL				
	2014	October, November, December	1.0	30
	2014	January, February, March	1.9	30
	2014	April, May, June	3.1	30
	2014	July, August, September	9.0	30
	2014	Fiscal Year Total	3.8	30
Lord's Place - TJC				

AGENCY	FISCAL YEAR	QUARTERS	AVERAGE DAILY PARTICIPANT	AVERAGE DAILY PARTICIPANT TARGET
	2014	October, November, December	73.7	30
	2014	January, February, March	68.5	30
	2014	April, May, June	65.7	30
	2014	July, August, September	42.2	30
	2014	Fiscal Year Total	62.5	30
BTAF - Juvenile Reentry				
	2014	October, November, December	2.5	50
	2014	January, February, March	17.3	50
	2014	April, May, June	49.6	50
	2014	July, August, September	71.5	50
	2014	Fiscal Year Total	35.2	50
BTAF - Choice to Change				
	2014	January, February, March	5.0	15
	2014	April, May, June	11.4	15
	2014	July, August, September	16.5	15
	2014	Fiscal Year Total	11.0	15
BTAF - Goodwill				
	2014	January, February, March	3.9	20
	2014	April, May, June	11.1	20
	2014	July, August, September	22.4	20
	2014	Fiscal Year Total	12.5	20
BTAF - Vita Nova				
	2014	April, May, June	1.0	2
	2014	July, August, September	1.0	2
	2014	Fiscal Year Total	1.0	2
YEC - Belle Glade				
	2014	October, November, December	47.8	28
	2014	January, February, March	44.9	28
	2014	April, May, June	47.1	28
	2014	July, August, September	39.0	28
	2014	Fiscal Year Total	44.7	28

AGENCY	FISCAL YEAR	QUARTERS	AVERAGE DAILY PARTICIPANT	AVERAGE DAILY PARTICIPANT TARGET
--------	-------------	----------	---------------------------	----------------------------------

YEC - Lake Worth

	2014	October, November, December	18.6	35
	2014	January, February, March	21.8	35
	2014	April, May, June	30.6	35
	2014	July, August, September	18.0	35
	2014	Fiscal Year Total	22.3	35

YEC - Riviera Beach

	2014	October, November, December	57.8	40
	2014	January, February, March	57.7	40
	2014	April, May, June	55.4	40
	2014	July, August, September	50.1	40
	2014	Fiscal Year Total	55.2	40



2014: Summary Completion Report

Wednesday, February 18, 2015

12:18:01 PM

AGENCY	FISCAL YEAR	QUARTERS	COMPLETION RATE %	CUMULATIVE COMPLETION RATE %	COMPLETION RATE % TARGET
Delinquency Drug Court					
	2014	October, November, December	0.0	0.0	50.0
	2014	January, February, March	16.7	12.5	50.0
	2014	April, May, June	50.0	20.0	50.0
	2014	July, August, September	40.0	26.7	50.0
	2014	Fiscal Year Total		26.7	50.0
Track 1 - Drug Court					
	2014	October, November, December	44.0	44.0	50.0
	2014	January, February, March	28.1	37.8	50.0
	2014	April, May, June	33.3	36.4	50.0
	2014	July, August, September	42.1	37.7	50.0
	2014	Fiscal Year Total		37.7	50.0
Track 2 - Co-Occurring					
	2014	October, November, December	60.0	60.0	50.0
	2014	January, February, March	57.1	58.8	50.0
	2014	April, May, June	30.0	48.1	50.0
	2014	July, August, September	22.2	41.7	50.0
	2014	Fiscal Year Total		41.7	50.0
Track 3 - Prescription					
	2014	October, November, December	20.0	20.0	50.0
	2014	January, February, March	16.7	18.2	50.0
	2014	April, May, June	37.5	29.6	50.0
	2014	July, August, September	71.4	38.2	50.0
	2014	Fiscal Year Total		38.2	50.0
Civil Drug Court - Assessment					
	2014	October, November, December	100.0	100.0	50.0
	2014	January, February, March	100.0	100.0	50.0
	2014	April, May, June	100.0	100.0	50.0

AGENCY	FISCAL YEAR	QUARTERS	COMPLETION RATE %	CUMULATIVE COMPLETION RATE %	COMPLETION RATE % TARGET
	2014	July, August, September	100.0	100.0	50.0
	2014	Fiscal Year Total		100.0	50.0
Civil Drug Court - Treatment					
	2014	October, November, December	80.0	80.0	50.0
	2014	January, February, March	100.0	83.3	50.0
	2014	April, May, June	100.0	85.7	50.0
	2014	July, August, September	91.7	88.5	50.0
	2014	Fiscal Year Total		88.5	50.0
Pre-Release - RESTORE					
	2014	October, November, December	89.2	89.2	70.0
	2014	January, February, March	83.3	87.3	70.0
	2014	April, May, June	93.8	88.7	70.0
	2014	July, August, September	100.0	90.8	70.0
	2014	Fiscal Year Total		90.8	70.0
Riviera Beach - RESTORE					
	2014	October, November, December	0.0	0.0	40.0
	2014	January, February, March	50.0	33.3	40.0
	2014	April, May, June	50.0	44.4	40.0
	2014	July, August, September		44.4	40.0
	2014	Fiscal Year Total		44.4	40.0
Goodwill - RESTORE					
	2014	October, November, December	0.0	0.0	40.0
	2014	January, February, March	0.0	0.0	40.0
	2014	April, May, June	0.0	0.0	40.0
	2014	July, August, September	40.0	16.7	40.0
	2014	Fiscal Year Total		16.7	40.0
Lord's Place - RESTORE					
	2014	October, November, December	22.2	22.2	40.0
	2014	January, February, March	50.0	35.3	40.0
	2014	April, May, June	0.0	31.6	40.0
	2014	July, August, September	47.8	37.7	40.0
	2014	Fiscal Year Total		37.7	40.0

AGENCY	FISCAL YEAR	QUARTERS	COMPLETION RATE %	CUMULATIVE COMPLETION RATE %	COMPLETION RATE % TARGET
Riviera Beach - COMMUNITY					
	2014	October, November, December	75.0	75.0	40.0
	2014	January, February, March	100.0	80.0	40.0
	2014	April, May, June	0.0	50.0	40.0
	2014	July, August, September	73.3	65.2	40.0
	2014	Fiscal Year Total		65.2	40.0
Goodwill - COMMUNITY					
	2014	October, November, December	40.0	40.0	40.0
	2014	January, February, March	0.0	36.4	40.0
	2014	April, May, June	66.7	42.9	40.0
	2014	July, August, September	46.8	45.9	40.0
	2014	Fiscal Year Total		45.9	40.0
Lord's Place - COMMUNITY					
	2014	October, November, December			40.0
	2014	January, February, March			40.0
	2014	April, May, June			40.0
	2014	July, August, September	43.8	43.8	40.0
	2014	Fiscal Year Total		43.8	40.0
Goodwill - JAIL					
	2014	October, November, December			40.0
	2014	January, February, March			40.0
	2014	April, May, June			40.0
	2014	July, August, September	0.0	0.0	40.0
	2014	Fiscal Year Total		0.0	40.0
Lord's Place - JAIL					
	2014	October, November, December			40.0
	2014	January, February, March			40.0
	2014	April, May, June			40.0
	2014	July, August, September			40.0
	2014	Fiscal Year Total			40.0
Lord's Place - TJC					
	2014	October, November, December	37.5	37.5	40.0

AGENCY	FISCAL YEAR	QUARTERS	COMPLETION RATE %	CUMULATIVE COMPLETION RATE %	COMPLETION RATE % TARGET
	2014	January, February, March	20.0	30.8	40.0
	2014	April, May, June	29.7	30.2	40.0
	2014	July, August, September	0.0	27.5	40.0
	2014	Fiscal Year Total		27.5	40.0
BTAF - Juvenile Reentry					
	2014	October, November, December			30.0
	2014	January, February, March			30.0
	2014	April, May, June	0.0	0.0	30.0
	2014	July, August, September	11.1	8.3	30.0
	2014	Fiscal Year Total		8.3	30.0
BTAF - Choice to Change					
	2014	January, February, March			30.0
	2014	April, May, June	0.0	0.0	30.0
	2014	July, August, September	25.0	16.7	30.0
	2014	Fiscal Year Total		16.7	30.0
BTAF - Goodwill					
	2014	January, February, March			30.0
	2014	April, May, June	0.0	0.0	30.0
	2014	July, August, September	25.0	20.0	30.0
	2014	Fiscal Year Total		20.0	30.0
BTAF - Vita Nova					
	2014	April, May, June			50.0
	2014	July, August, September	100.0	100.0	50.0
	2014	Fiscal Year Total		100.0	50.0
YEC - Belle Glade					
	2014	October, November, December	100.0	100.0	
	2014	January, February, March	100.0	100.0	
	2014	April, May, June	100.0	100.0	
	2014	July, August, September	100.0	100.0	
	2014	Fiscal Year Total		100.0	
YEC - Lake Worth					
	2014	October, November, December	100.0	100.0	

AGENCY	FISCAL YEAR	QUARTERS	COMPLETION RATE %	CUMULATIVE COMPLETION RATE %	COMPLETION RATE % TARGET
	2014	January, February, March	100.0	100.0	
	2014	April, May, June	100.0	100.0	
	2014	July, August, September	100.0	100.0	
	2014	Fiscal Year Total		100.0	
YEC - Riviera Beach					
	2014	October, November, December	100.0	100.0	
	2014	January, February, March	100.0	100.0	
	2014	April, May, June	100.0	100.0	
	2014	July, August, September	100.0	100.0	
	2014	Fiscal Year Total		100.0	

Source: Research and Planning Unit, Criminal Justice Commission. Palm Beach County.



2014: Summary 3 Year Recidivism Rate

AGENCY	GROUP * participants exiting programming during dates listed below.	Cumulative Recidivism		
		Participants Completed Recidivism Rate %	Participants Not Completed Recidivism Rate %	3 Year Recidivism Target %
Delinquency Drug Court				
	October 1, 2010 to December 31, 2013	25.0	26.3	25.0
	January 1, 2011 to March 31, 2014	27.8	21.7	25.0
	April 1, 2011 to June 30, 2014	23.1	20.8	25.0
	July 1, 2011 to September 30, 2014	20.0	19.2	25.0
Track 1 - Drug Court				
	October 1, 2010 to December 31, 2013	2.4	15.0	15.0
	January 1, 2011 to March 31, 2014	2.2	13.7	15.0
	April 1, 2011 to June 30, 2014	1.7	12.1	15.0
	July 1, 2011 to September 30, 2014	1.4	10.1	15.0
Track 2 - Co-Occurring				
	October 1, 2010 to December 31, 2013	2.6	20.7	15.0
	January 1, 2011 to March 31, 2014	2.3	16.4	15.0
	April 1, 2011 to June 30, 2014	2.3	15.1	15.0
	July 1, 2011 to September 30, 2014	0.0	13.0	15.0
Track 3 - Prescription				
	October 1, 2010 to December 31, 2013	0.0	13.0	15.0
	January 1, 2011 to March 31, 2014	0.0	10.7	15.0
	April 1, 2011 to June 30, 2014	0.0	7.9	15.0
	July 1, 2011 to September 30, 2014	0.0	7.5	15.0

Recidivism is defined as arrest and conviction after participant has exited programming. For delinquency drug court, recidivism is defined as arrest and adjudicated delinquent after participant has exited programming. The three follow-up periods (six months, 1 year, 3 years) refer to within timeframes and as such represent a cumulative total/rates.

Source: Research and Planning Unit, Criminal Justice Commission. Palm Beach County.

AGENCY	GROUP * participants exiting programming during dates listed below.	Cumulative Recidivism		
		3 Year Recidivism		
		Participants Completed Recidivism Rate %	Participants Not Completed Recidivism Rate %	3 Year Recidivism Target %
Civil Drug Court - Assessment				
	October 1, 2010 to December 31, 2013	17.6		15.0
	January 1, 2011 to March 31, 2014	16.9		15.0
	April 1, 2011 to June 30, 2014	15.5		15.0
	July 1, 2011 to September 30, 2014	14.7		15.0
Civil Drug Court - Treatment				
	October 1, 2010 to December 31, 2013	7.6	26.9	15.0
	January 1, 2011 to March 31, 2014	6.6	25.4	15.0
	April 1, 2011 to June 30, 2014	4.8	25.8	15.0
	July 1, 2011 to September 30, 2014	4.0	22.0	15.0
Pre-Release - RESTORE				
	October 1, 2010 to December 31, 2013	15.7	16.9	34.0
	January 1, 2011 to March 31, 2014	15.3	16.1	34.0
	April 1, 2011 to June 30, 2014	14.6	15.9	34.0
	July 1, 2011 to September 30, 2014	13.9	14.8	34.0
Riviera Beach - RESTORE				
	October 1, 2010 to December 31, 2013	16.7	15.8	34.0
	January 1, 2011 to March 31, 2014	14.3	15.0	34.0
	April 1, 2011 to June 30, 2014	10.0	13.0	34.0
	July 1, 2011 to September 30, 2014	10.0	13.0	34.0

Recidivism is defined as arrest and conviction after participant has exited programming. For delinquency drug court, recidivism is defined as arrest and adjudicated delinquent after participant has exited programming. The three follow-up periods (six months, 1 year, 3 years) refer to within timeframes and as such represent a cumulative total/rates.

Source: Research and Planning Unit, Criminal Justice Commission. Palm Beach County.

AGENCY	GROUP * participants exiting programming during dates listed below.	Cumulative Recidivism		
		3 Year Recidivism		
		Participants Completed Recidivism Rate %	Participants Not Completed Recidivism Rate %	3 Year Recidivism Target %
Goodwill - RESTORE				
	October 1, 2010 to December 31, 2013	15.4	19.6	34.0
	January 1, 2011 to March 31, 2014	15.4	17.5	34.0
	April 1, 2011 to June 30, 2014	15.4	17.2	34.0
	July 1, 2011 to September 30, 2014	11.8	15.7	34.0
Lord's Place - RESTORE				
	October 1, 2010 to December 31, 2013	30.0	11.5	34.0
	January 1, 2011 to March 31, 2014	16.7	10.1	34.0
	April 1, 2011 to June 30, 2014	16.7	9.6	34.0
	July 1, 2011 to September 30, 2014	10.3	8.2	34.0
Riviera Beach - COMMUNITY				
	October 1, 2010 to December 31, 2013	11.9	24.0	34.0
	January 1, 2011 to March 31, 2014	11.6	24.0	34.0
	April 1, 2011 to June 30, 2014	11.6	22.6	34.0
	July 1, 2011 to September 30, 2014	9.3	21.1	34.0
Goodwill - COMMUNITY				
	October 1, 2010 to December 31, 2013	13.6	11.4	34.0
	January 1, 2011 to March 31, 2014	13.6	11.1	34.0
	April 1, 2011 to June 30, 2014	13.0	10.9	34.0
	July 1, 2011 to September 30, 2014	6.7	7.0	34.0
Lord's Place - COMMUNITY				
	July 1, 2011 to September 30, 2014	0.0	0.0	34.0
Goodwill - JAIL				
	July 1, 2011 to September 30, 2014		0.0	34.0

Recidivism is defined as arrest and conviction after participant has exited programming. For delinquency drug court, recidivism is defined as arrest and adjudicated delinquent after participant has exited programming. The three follow-up periods (six months, 1 year, 3 years) refer to within timeframes and as such represent a cumulative total/rates.

Source: Research and Planning Unit, Criminal Justice Commission. Palm Beach County.

AGENCY	GROUP * participants exiting programming during dates listed below.	Cumulative Recidivism		
		3 Year Recidivism		
		Participants Completed Recidivism Rate %	Participants Not Completed Recidivism Rate %	3 Year Recidivism Target %
Lord's Place - JAIL				
	October 1, 2010 to December 31, 2013		100.0	34.0
	January 1, 2011 to March 31, 2014		100.0	34.0
	April 1, 2011 to June 30, 2014		100.0	34.0
	July 1, 2011 to September 30, 2014		100.0	34.0
Lord's Place - TJC				
	October 1, 2010 to December 31, 2013	2.6	12.1	34.0
	January 1, 2011 to March 31, 2014	2.5	12.1	34.0
	April 1, 2011 to June 30, 2014	2.0	8.7	34.0
	July 1, 2011 to September 30, 2014	2.0	8.2	34.0
BTAF - Juvenile Reentry				
	April 1, 2011 to June 30, 2014		0.0	40.0
	July 1, 2011 to September 30, 2014	0.0	0.0	40.0
BTAF - Choice to Change				
	April 1, 2011 to June 30, 2014		0.0	40.0
	July 1, 2011 to September 30, 2014	0.0	0.0	40.0
BTAF - Goodwill				
	April 1, 2011 to June 30, 2014		0.0	40.0
	July 1, 2011 to September 30, 2014	0.0	0.0	40.0
BTAF - Vita Nova				
	July 1, 2011 to September 30, 2014	0.0		40.0

Recidivism is defined as arrest and conviction after participant has exited programming. For delinquency drug court, recidivism is defined as arrest and adjudicated delinquent after participant has exited programming. The three follow-up periods (six months, 1 year, 3 years) refer to within timeframes and as such represent a cumulative total/rates.

Source: Research and Planning Unit, Criminal Justice Commission. Palm Beach County.

AGENCY	GROUP * participants exiting programming during dates listed below.	Cumulative Recidivism		
		3 Year Recidivism		
		Participants Completed Recidivism Rate %	Participants Not Completed Recidivism Rate %	3 Year Recidivism Target %
YEC - Belle Glade				
	October 1, 2010 to December 31, 2013	2.2		0.0
	January 1, 2011 to March 31, 2014	1.9		0.0
	April 1, 2011 to June 30, 2014	1.7		0.0
	July 1, 2011 to September 30, 2014	1.7		0.0
YEC - Lake Worth				
	October 1, 2010 to December 31, 2013	0.0		0.0
	January 1, 2011 to March 31, 2014	0.0		0.0
	April 1, 2011 to June 30, 2014	0.0		0.0
	July 1, 2011 to September 30, 2014	0.0		0.0
YEC - Riviera Beach				
	October 1, 2010 to December 31, 2013	3.0		0.0
	January 1, 2011 to March 31, 2014	2.2		0.0
	April 1, 2011 to June 30, 2014	1.8		0.0
	July 1, 2011 to September 30, 2014	1.2		0.0

Recidivism is defined as arrest and conviction after participant has exited programming. For delinquency drug court, recidivism is defined as arrest and adjudicated delinquent after participant has exited programming. The three follow-up periods (six months, 1 year, 3 years) refer to within timeframes and as such represent a cumulative total/rates.

Source: Research and Planning Unit, Criminal Justice Commission. Palm Beach County.

DETAILED REPORTS



Detailed Report: Programmatic Activity

Wednesday, February 18, 2015

12:14:28 PM

AGENCY	FISCAL YEAR	QUARTERS	ADMISSIONS	EXITS	COMPLETED	NOT COMPLETED	ACTIVE PARTICIPANTS	COMPLETION RATE %	CUMULATIVE COMPLETION RATE %	PARTICIPANTS SERVED	CUMULATIVE PARTICIPANTS SERVED	AVERAGE DAILY POPULATION (ADP)
Delinquency Drug Court												
	2012	October, November, December	2	2	1	1	10	50.0	50.0	12	12	10.5
	2012	January, February, March	3	4	1	3	9	25.0	33.3	13	15	8.5
	2012	April, May, June	2	5	1	4	6	20.0	27.3	11	17	5.9
	2012	July, August, September	1	2	0	2	5	0.0	23.1	7	18	5.4
	2012	Fiscal Year Total	8	13	3	10			23.1		18	7.6
	2013	October, November, December	1	3	1	2	3	33.3	33.3	6	6	3.2
	2013	January, February, March	0	0			3		33.3	3	6	3.0
	2013	April, May, June	0	0			3		33.3	3	6	3.0
	2013	July, August, September	2	2	1	1	3	50.0	40.0	5	8	2.4
	2013	Fiscal Year Total	3	5	2	3			40.0		8	2.9
	2014	October, November, December	9	2	0	2	10	0.0	0.0	12	12	9.5
	2014	January, February, March	7	6	1	5	11	16.7	12.5	17	19	12.4
	2014	April, May, June	6	2	1	1	15	50.0	20.0	17	25	11.6
	2014	July, August, September	5	5	2	3	15	40.0	26.7	20	30	15.5
	2014	Fiscal Year Total	27	15	4	11			26.7		30	12.2

AGENCY	FISCAL YEAR	QUARTERS	ADMISSIONS	EXITS	COMPLETED	NOT COMPLETED	ACTIVE PARTICIPANTS	COMPLETION RATE %	CUMULATIVE COMPLETION RATE %	PARTICIPANTS SERVED	CUMULATIVE PARTICIPANTS SERVED	AVERAGE DAILY POPULATION (ADP)
Track 1 - Drug Court												
	2012	October, November, December	40	50	28	22	199	56.0	56.0	249	249	209.0
	2012	January, February, March	28	68	33	35	159	48.5	51.7	227	277	180.7
	2012	April, May, June	39	46	31	15	152	67.4	56.1	198	316	151.2
	2012	July, August, September	24	41	26	15	135	63.4	57.6	176	340	147.9
	2012	<u>Fiscal Year Total</u>	131	205	118	87			57.6		340	172.2
	2013	October, November, December	41	45	23	22	131	51.1	51.1	176	176	136.0
	2013	January, February, March	35	35	18	17	131	51.4	51.3	166	211	129.2
	2013	April, May, June	41	38	16	22	134	42.1	48.3	172	252	136.1
	2013	July, August, September	34	40	21	19	128	52.5	49.4	168	286	132.4
	2013	<u>Fiscal Year Total</u>	151	158	78	80			49.4		286	133.4
	2014	October, November, December	48	50	22	28	126	44.0	44.0	176	176	130.6
	2014	January, February, March	46	32	9	23	140	28.1	37.8	172	222	135.1
	2014	April, May, June	49	39	13	26	150	33.3	36.4	189	271	146.9
	2014	July, August, September	48	38	16	22	160	42.1	37.7	198	319	158.1
	2014	<u>Fiscal Year Total</u>	191	159	60	99			37.7		319	142.7

AGENCY	FISCAL YEAR	QUARTERS	ADMISSIONS	EXITS	COMPLETED	NOT COMPLETED	ACTIVE PARTICIPANTS	COMPLETION RATE %	CUMULATIVE COMPLETION RATE %	PARTICIPANTS SERVED	CUMULATIVE PARTICIPANTS SERVED	AVERAGE DAILY POPULATION (ADP)
Track 2 - Co-Occurring												
	2012	October, November, December	3	7	4	3	23	57.1	57.1	30	30	25.5
	2012	January, February, March	6	9	4	5	20	44.4	50.0	29	36	22.9
	2012	April, May, June	11	6	2	4	25	33.3	45.5	31	47	24.2
	2012	July, August, September	4	2	0	2	27	0.0	41.7	29	51	25.9
	2012	<u>Fiscal Year Total</u>	24	24	10	14			41.7		51	24.6
	2013	October, November, December	8	7	3	4	28	42.9	42.9	35	35	28.7
	2013	January, February, March	10	3	2	1	35	66.7	50.0	38	45	31.1
	2013	April, May, June	10	11	3	8	34	27.3	38.1	45	55	33.6
	2013	July, August, September	6	4	2	2	36	50.0	40.0	40	61	34.5
	2013	<u>Fiscal Year Total</u>	34	25	10	15			40.0		61	32.0
	2014	October, November, December	5	10	6	4	31	60.0	60.0	41	41	33.7
	2014	January, February, March	10	7	4	3	34	57.1	58.8	41	51	35.8
	2014	April, May, June	14	10	3	7	38	30.0	48.1	48	65	35.3
	2014	July, August, September	8	9	2	7	37	22.2	41.7	46	73	38.9
	2014	<u>Fiscal Year Total</u>	37	36	15	21			41.7		73	35.9

AGENCY	FISCAL YEAR	QUARTERS	ADMISSIONS	EXITS	COMPLETED	NOT COMPLETED	ACTIVE PARTICIPANTS	COMPLETION RATE %	CUMULATIVE COMPLETION RATE %	PARTICIPANTS SERVED	CUMULATIVE PARTICIPANTS SERVED	AVERAGE DAILY POPULATION (ADP)
Track 3 - Prescription												
	2012	October, November, December	4	0			9			9	9	6.2
	2012	January, February, March	15	0			24			24	24	16.0
	2012	April, May, June	6	1	0	1	29	0.0	0.0	30	30	26.0
	2012	July, August, September	7	6	0	6	30	0.0	0.0	36	37	29.9
	2012	<u>Fiscal Year Total</u>	32	7	0	7			0.0		37	19.5
	2013	October, November, December	5	5	3	2	30	60.0	60.0	35	35	30.0
	2013	January, February, March	6	7	4	3	29	57.1	58.3	36	41	29.5
	2013	April, May, June	9	8	4	4	30	50.0	55.0	38	50	30.6
	2013	July, August, September	8	5	2	3	33	40.0	52.0	38	58	29.9
	2013	<u>Fiscal Year Total</u>	28	25	13	12			52.0		58	30.0
	2014	October, November, December	13	5	1	4	41	20.0	20.0	46	46	38.3
	2014	January, February, March	10	6	1	5	45	16.7	18.2	51	56	43.9
	2014	April, May, June	11	16	6	10	40	37.5	29.6	56	67	45.4
	2014	July, August, September	0	7	5	2	33	71.4	38.2	40	67	37.1
	2014	<u>Fiscal Year Total</u>	34	34	13	21			38.2		67	41.2

AGENCY	FISCAL YEAR	QUARTERS	ADMISSIONS	EXITS	COMPLETED	NOT COMPLETED	ACTIVE PARTICIPANTS	COMPLETION RATE %	CUMULATIVE COMPLETION RATE %	PARTICIPANTS SERVED	CUMULATIVE PARTICIPANTS SERVED	AVERAGE DAILY POPULATION (ADP)
Civil Drug Court - Assessment												
	2012	October, November, December	6	10	10	0	9	100.0	100.0	19	19	10.7
	2012	January, February, March	8	9	9	0	8	100.0	100.0	17	27	9.4
	2012	April, May, June	6	13	13	0	1	100.0	100.0	14	33	4.6
	2012	July, August, September	8	3	3	0	6	100.0	100.0	9	41	4.7
	2012	Fiscal Year Total	28	35	35	0			100.0		41	7.3
	2013	October, November, December	3	5	5	0	4	100.0	100.0	9	9	5.0
	2013	January, February, March	8	4	4	0	8	100.0	100.0	12	17	6.6
	2013	April, May, June	10	10	10	0	8	100.0	100.0	18	27	11.5
	2013	July, August, September	8	8	8	0	8	100.0	100.0	16	35	7.0
	2013	Fiscal Year Total	29	27	27	0			100.0		35	7.5
	2014	October, November, December	11	15	15	0	4	100.0	100.0	19	19	7.8
	2014	January, February, March	8	9	9	0	3	100.0	100.0	12	27	3.5
	2014	April, May, June	2	1	1	0	4	100.0	100.0	5	29	3.8
	2014	July, August, September	6	9	9	0	1	100.0	100.0	10	35	3.7
	2014	Fiscal Year Total	27	34	34	0			100.0		35	4.7

AGENCY	FISCAL YEAR	QUARTERS	ADMISSIONS	EXITS	COMPLETED	NOT COMPLETED	ACTIVE PARTICIPANTS	COMPLETION RATE %	CUMULATIVE COMPLETION RATE %	PARTICIPANTS SERVED	CUMULATIVE PARTICIPANTS SERVED	AVERAGE DAILY POPULATION (ADP)
Civil Drug Court - Treatment												
	2012	October, November, December	13	17	8	9	20	47.1	47.1	37	37	22.7
	2012	January, February, March	22	10	2	8	32	20.0	37.0	42	59	27.0
	2012	April, May, June	7	13	7	6	26	53.8	42.5	39	66	27.0
	2012	July, August, September	12	16	8	8	22	50.0	44.6	38	78	22.7
	2012	Fiscal Year Total	54	56	25	31			44.6		78	24.8
	2013	October, November, December	8	12	11	1	18	91.7	91.7	30	30	20.4
	2013	January, February, March	10	13	10	3	15	76.9	84.0	28	40	19.6
	2013	April, May, June	14	11	10	1	18	90.9	86.1	29	54	18.0
	2013	July, August, September	9	12	12	0	15	100.0	89.6	27	63	15.9
	2013	Fiscal Year Total	41	48	43	5			89.6		63	18.5
	2014	October, November, December	17	10	8	2	22	80.0	80.0	32	32	20.9
	2014	January, February, March	13	2	2	0	33	100.0	83.3	35	45	24.9
	2014	April, May, June	11	2	2	0	42	100.0	85.7	44	56	36.1
	2014	July, August, September	9	12	11	1	39	91.7	88.5	51	65	39.7
	2014	Fiscal Year Total	50	26	23	3			88.5		65	30.4

AGENCY	FISCAL YEAR	QUARTERS	ADMISSIONS	EXITS	COMPLETED	NOT COMPLETED	ACTIVE PARTICIPANTS	COMPLETION RATE %	CUMULATIVE COMPLETION RATE %	PARTICIPANTS SERVED	CUMULATIVE PARTICIPANTS SERVED	AVERAGE DAILY POPULATION (ADP)
Pre-Release - RESTORE												
	2012	October, November, December	41	36	31	5	70	86.1	86.1	106	106	67.6
	2012	January, February, March	45	29	24	5	86	82.8	84.6	115	151	67.1
	2012	April, May, June	32	32	28	4	86	87.5	85.6	118	183	91.7
	2012	July, August, September	53	35	27	8	104	77.1	83.3	139	236	94.8
	2012	<u>Fiscal Year Total</u>	171	132	110	22			83.3		236	80.3
	2013	October, November, December	35	24	22	2	115	91.7	91.7	139	139	108.3
	2013	January, February, March	56	34	24	10	137	70.6	79.3	171	195	129.9
	2013	April, May, June	28	50	45	5	115	90.0	84.3	165	223	127.1
	2013	July, August, September	38	36	27	9	117	75.0	81.9	153	261	112.8
	2013	<u>Fiscal Year Total</u>	157	144	118	26			81.9		261	119.5
	2014	October, November, December	35	37	33	4	115	89.2	89.2	152	152	121.5
	2014	January, February, March	36	18	15	3	133	83.3	87.3	151	188	122.5
	2014	April, May, June	35	16	15	1	152	93.8	88.7	168	223	137.6
	2014	July, August, September	24	16	16	0	160	100.0	90.8	176	247	157.0
	2014	<u>Fiscal Year Total</u>	130	87	79	8			90.8		247	134.6

AGENCY	FISCAL YEAR	QUARTERS	ADMISSIONS	EXITS	COMPLETED	NOT COMPLETED	ACTIVE PARTICIPANTS	COMPLETION RATE %	CUMULATIVE COMPLETION RATE %	PARTICIPANTS SERVED	CUMULATIVE PARTICIPANTS SERVED	AVERAGE DAILY POPULATION (ADP)
Riviera Beach - RESTORE												
	2012	October, November, December	5	0			9			9	9	6.0
	2012	January, February, March	7	1	0	1	15	0.0	0.0	16	16	11.6
	2012	April, May, June	10	5	1	4	20	20.0	16.7	25	26	17.3
	2012	July, August, September	0	2	1	1	18	50.0	25.0	20	26	18.6
	2012	<u>Fiscal Year Total</u>	22	8	2	6			25.0		26	13.4
	2013	October, November, December	7	2	1	1	23	50.0	50.0	25	25	21.8
	2013	January, February, March	5	2	1	1	26	50.0	50.0	28	30	24.6
	2013	April, May, June	10	8	2	6	28	25.0	33.3	36	40	28.2
	2013	July, August, September	5	3	0	3	30	0.0	26.7	33	45	28.9
	2013	<u>Fiscal Year Total</u>	27	15	4	11			26.7		45	25.9
	2014	October, November, December	6	1	0	1	35	0.0	0.0	36	36	32.5
	2014	January, February, March	3	2	1	1	36	50.0	33.3	38	39	35.3
	2014	April, May, June	2	6	3	3	32	50.0	44.4	38	41	31.4
	2014	July, August, September	3	0			35		44.4	35	44	33.8
	2014	<u>Fiscal Year Total</u>	14	9	4	5			44.4		44	33.2

AGENCY	FISCAL YEAR	QUARTERS	ADMISSIONS	EXITS	COMPLETED	NOT COMPLETED	ACTIVE PARTICIPANTS	COMPLETION RATE %	CUMULATIVE COMPLETION RATE %	PARTICIPANTS SERVED	CUMULATIVE PARTICIPANTS SERVED	AVERAGE DAILY POPULATION (ADP)
Goodwill - RESTORE												
	2012	October, November, December	12	2	0	2	16	0.0	0.0	18	18	12.8
	2012	January, February, March	7	1	0	1	22	0.0	0.0	23	25	19.8
	2012	April, May, June	10	10	4	6	22	40.0	30.8	32	35	23.1
	2012	July, August, September	14	8	0	8	28	0.0	19.0	36	49	26.0
	2012	<u>Fiscal Year Total</u>	43	21	4	17			19.0		49	20.5
	2013	October, November, December	7	8	0	8	27	0.0	0.0	35	35	28.4
	2013	January, February, March	5	8	1	7	24	12.5	6.3	32	40	24.4
	2013	April, May, June	16	6	2	4	34	33.3	13.6	40	56	27.3
	2013	July, August, September	10	12	5	7	32	41.7	23.5	44	66	34.5
	2013	<u>Fiscal Year Total</u>	38	34	8	26			23.5		66	28.7
	2014	October, November, December	11	6	0	6	37	0.0	0.0	43	43	33.9
	2014	January, February, March	7	7	0	7	37	0.0	0.0	44	50	35.7
	2014	April, May, June	7	1	0	1	43	0.0	0.0	44	57	40.2
	2014	July, August, September	5	10	4	6	38	40.0	16.7	48	62	40.4
	2014	<u>Fiscal Year Total</u>	30	24	4	20			16.7		62	37.5

AGENCY	FISCAL YEAR	QUARTERS	ADMISSIONS	EXITS	COMPLETED	NOT COMPLETED	ACTIVE PARTICIPANTS	COMPLETION RATE %	CUMULATIVE COMPLETION RATE %	PARTICIPANTS SERVED	CUMULATIVE PARTICIPANTS SERVED	AVERAGE DAILY POPULATION (ADP)
Lord's Place - RESTORE												
	2012	October, November, December	14	7	0	7	18	0.0	0.0	25	25	15.3
	2012	January, February, March	10	4	0	4	24	0.0	0.0	28	35	20.9
	2012	April, May, June	8	10	1	9	22	10.0	4.8	32	43	23.4
	2012	July, August, September	13	6	0	6	29	0.0	3.7	35	56	25.6
	2012	<u>Fiscal Year Total</u>	45	27	1	26			3.7		56	21.3
	2013	October, November, December	8	4	2	2	33	50.0	50.0	37	37	30.2
	2013	January, February, March	14	6	0	6	41	0.0	20.0	47	51	37.8
	2013	April, May, June	19	4	1	3	56	25.0	21.4	60	70	50.3
	2013	July, August, September	11	9	2	7	58	22.2	21.7	67	81	57.1
	2013	<u>Fiscal Year Total</u>	52	23	5	18			21.7		81	43.8
	2014	October, November, December	16	18	4	14	56	22.2	22.2	74	74	54.5
	2014	January, February, March	6	16	8	8	46	50.0	35.3	62	80	56.1
	2014	April, May, June	6	4	0	4	48	0.0	31.6	52	86	47.6
	2014	July, August, September	7	23	11	12	32	47.8	37.7	55	93	37.3
	2014	<u>Fiscal Year Total</u>	35	61	23	38			37.7		93	48.9

AGENCY	FISCAL YEAR	QUARTERS	ADMISSIONS	EXITS	COMPLETED	NOT COMPLETED	ACTIVE PARTICIPANTS	COMPLETION RATE %	CUMULATIVE COMPLETION RATE %	PARTICIPANTS SERVED	CUMULATIVE PARTICIPANTS SERVED	AVERAGE DAILY POPULATION (ADP)
Riviera Beach - COMMUNITY	2012	October, November, December	15	0			17			17	17	4.6
	2012	January, February, March	23	12	6	6	28	50.0	50.0	40	40	26.0
	2012	April, May, June	30	17	7	10	41	41.2	44.8	58	70	37.2
	2012	July, August, September	28	25	8	17	44	32.0	38.9	69	98	41.9
	2012	Fiscal Year Total	96	54	21	33			38.9		98	27.4
	2013	October, November, December	20	11	3	8	53	27.3	27.3	64	64	48.6
	2013	January, February, March	20	12	8	4	61	66.7	47.8	73	84	58.5
	2013	April, May, June	11	7	6	1	65	85.7	56.7	72	95	65.3
	2013	July, August, September	8	4	1	3	69	25.0	52.9	73	103	67.8
	2013	Fiscal Year Total	59	34	18	16			52.9		103	60.0
	2014	October, November, December	17	4	3	1	82	75.0	75.0	86	86	73.3
	2014	January, February, March	27	1	1	0	108	100.0	80.0	109	113	94.1
	2014	April, May, June	16	3	0	3	121	0.0	50.0	124	129	116.2
	2014	July, August, September	14	15	11	4	120	73.3	65.2	135	143	122.0
	2014	Fiscal Year Total	74	23	15	8			65.2		143	101.4

AGENCY	FISCAL YEAR	QUARTERS	ADMISSIONS	EXITS	COMPLETED	NOT COMPLETED	ACTIVE PARTICIPANTS	COMPLETION RATE %	CUMULATIVE COMPLETION RATE %	PARTICIPANTS SERVED	CUMULATIVE PARTICIPANTS SERVED	AVERAGE DAILY POPULATION (ADP)
Goodwill - COMMUNITY												
	2012	October, November, December	8	2	2	0	18	100.0	100.0	20	20	15.0
	2012	January, February, March	16	8	2	6	26	25.0	40.0	34	36	19.4
	2012	April, May, June	14	9	1	8	31	11.1	26.3	40	50	32.3
	2012	July, August, September	13	10	4	6	34	40.0	31.0	44	63	31.0
	2012	<u>Fiscal Year Total</u>	51	29	9	20			31.0		63	24.4
	2013	October, November, December	7	3	2	1	38	66.7	66.7	41	41	35.9
	2013	January, February, March	13	13	4	9	38	30.8	37.5	51	54	38.6
	2013	April, May, June	10	8	2	6	40	25.0	33.3	48	64	40.7
	2013	July, August, September	13	2	0	2	51	0.0	30.8	53	77	45.1
	2013	<u>Fiscal Year Total</u>	43	26	8	18			30.8		77	40.1
	2014	October, November, December	20	10	4	6	61	40.0	40.0	71	71	57.6
	2014	January, February, March	13	1	0	1	73	0.0	36.4	74	84	67.5
	2014	April, May, June	8	3	2	1	78	66.7	42.9	81	92	75.4
	2014	July, August, September	11	47	22	25	42	46.8	45.9	89	103	62.0
	2014	<u>Fiscal Year Total</u>	52	61	28	33			45.9		103	65.6

AGENCY	FISCAL YEAR	QUARTERS	ADMISSIONS	EXITS	COMPLETED	NOT COMPLETED	ACTIVE PARTICIPANTS	COMPLETION RATE %	CUMULATIVE COMPLETION RATE %	PARTICIPANTS SERVED	CUMULATIVE PARTICIPANTS SERVED	AVERAGE DAILY POPULATION (ADP)
Lord's Place - COMMUNITY	2012	April, May, June	1	0			1			1	1	1.0
	2012	July, August, September	0	0			1			1	1	1.0
	2012	<u>Fiscal Year Total</u>	1	0							1	1.0
	2013	October, November, December	0	0			1			1	1	1.0
	2013	January, February, March	1	0			2			2	2	1.5
	2013	April, May, June	0	0			2			2	2	2.0
	2013	July, August, September	0	0			2			2	2	2.0
	2013	<u>Fiscal Year Total</u>	1	0							2	1.6
	2014	October, November, December	7	0			9			9	9	6.4
	2014	January, February, March	6	0			15			15	15	11.0
	2014	April, May, June	8	0			23			23	23	19.5
	2014	July, August, September	4	16	7	9	11	43.8	43.8	27	27	13.1
	2014	<u>Fiscal Year Total</u>	25	16	7	9			43.8		27	12.5

AGENCY	FISCAL YEAR	QUARTERS	ADMISSIONS	EXITS	COMPLETED	NOT COMPLETED	ACTIVE PARTICIPANTS	COMPLETION RATE %	CUMULATIVE COMPLETION RATE %	PARTICIPANTS SERVED	CUMULATIVE PARTICIPANTS SERVED	AVERAGE DAILY POPULATION (ADP)
Goodwill - JAIL												
	2014	October, November, December	4	0			4			4	4	1.9
	2014	January, February, March	5	0			9			9	9	6.7
	2014	April, May, June	12	0			21			21	21	14.8
	2014	July, August, September	6	1	0	1	26	0.0	0.0	27	27	25.0
	2014	<u>Fiscal Year Total</u>	27	1	0	1			0.0		27	12.1

AGENCY	FISCAL YEAR	QUARTERS	ADMISSIONS	EXITS	COMPLETED	NOT COMPLETED	ACTIVE PARTICIPANTS	COMPLETION RATE %	CUMULATIVE COMPLETION RATE %	PARTICIPANTS SERVED	CUMULATIVE PARTICIPANTS SERVED	AVERAGE DAILY POPULATION (ADP)
Lord's Place - JAIL												
	2012	October, November, December	0	0			1			1	1	1.0
	2012	January, February, March	0	0			1			1	1	1.0
	2012	April, May, June	0	0			1			1	1	1.0
	2012	July, August, September	0	0			1			1	1	1.0
	2012	<u>Fiscal Year Total</u>	0	0							1	1.0
	2013	October, November, December	0	0			1			1	1	1.0
	2013	January, February, March	0	0			1			1	1	1.0
	2013	April, May, June	0	0			1			1	1	1.0
	2013	July, August, September	0	1	0	1	0	0.0	0.0	1	1	1.0
	2013	<u>Fiscal Year Total</u>	0	1	0	1			0.0		1	1.0
	2014	October, November, December	1	0			1			1	1	1.0
	2014	January, February, March	1	0			2			2	2	1.9
	2014	April, May, June	3	0			5			5	5	3.1
	2014	July, August, September	8	0			13			13	13	9.0
	2014	<u>Fiscal Year Total</u>	13	0							13	3.8

AGENCY	FISCAL YEAR	QUARTERS	ADMISSIONS	EXITS	COMPLETED	NOT COMPLETED	ACTIVE PARTICIPANTS	COMPLETION RATE %	CUMULATIVE COMPLETION RATE %	PARTICIPANTS SERVED	CUMULATIVE PARTICIPANTS SERVED	AVERAGE DAILY POPULATION (ADP)
Lord's Place - TJC												
	2012	October, November, December	18	1	0	1	79	0.0	0.0	80	80	70.4
	2012	January, February, March	23	0			102		0.0	102	103	93.5
	2012	April, May, June	4	0			106		0.0	106	107	103.8
	2012	July, August, September	4	12	0	12	98	0.0	0.0	110	111	103.8
	2012	<u>Fiscal Year Total</u>	49	13	0	13			0.0		111	92.9
	2013	October, November, December	10	1	1	0	107	100.0	100.0	108	108	102.1
	2013	January, February, March	11	33	17	16	85	51.5	52.9	118	119	88.0
	2013	April, May, June	10	11	7	4	84	63.6	55.6	95	129	82.2
	2013	July, August, September	14	22	7	15	76	31.8	47.8	98	143	85.3
	2013	<u>Fiscal Year Total</u>	45	67	32	35			47.8		143	89.4
	2014	October, November, December	10	16	6	10	70	37.5	37.5	86	86	73.7
	2014	January, February, March	4	10	2	8	64	20.0	30.8	74	90	68.5
	2014	April, May, June	20	37	11	26	47	29.7	30.2	84	110	65.7
	2014	July, August, September	1	6	0	6	42	0.0	27.5	48	111	42.2
	2014	<u>Fiscal Year Total</u>	35	69	19	50			27.5		111	62.5

AGENCY	FISCAL YEAR	QUARTERS	ADMISSIONS	EXITS	COMPLETED	NOT COMPLETED	ACTIVE PARTICIPANTS	COMPLETION RATE %	CUMULATIVE COMPLETION RATE %	PARTICIPANTS SERVED	CUMULATIVE PARTICIPANTS SERVED	AVERAGE DAILY POPULATION (ADP)
BTAF - Juvenile Reentry												
	2014	October, November, December	6	0			6			6	6	2.5
	2014	January, February, March	23	0			29			29	29	17.3
	2014	April, May, June	37	3	0	3	63	0.0	0.0	66	66	49.6
	2014	July, August, September	30	9	1	8	84	11.1	8.3	93	96	71.5
	2014	Fiscal Year Total	96	12	1	11			8.3		96	35.2
BTAF - Choice to Change												
	2014	January, February, March	8	0			8			8	8	5.0
	2014	April, May, June	8	2	0	2	14	0.0	0.0	16	16	11.4
	2014	July, August, September	12	4	1	3	22	25.0	16.7	26	28	16.5
	2014	Fiscal Year Total	28	6	1	5			16.7		28	11.0
BTAF - Goodwill												
	2014	January, February, March	7	0			7			7	7	3.9
	2014	April, May, June	12	1	0	1	18	0.0	0.0	19	19	11.1
	2014	July, August, September	14	4	1	3	28	25.0	20.0	32	33	22.4
	2014	Fiscal Year Total	33	5	1	4			20.0		33	12.5
BTAF - Vita Nova												
	2014	April, May, June	1	0			1			1	1	1.0
	2014	July, August, September	0	1	1	0	0	100.0	100.0	1	1	1.0
	2014	Fiscal Year Total	1	1	1	0			100.0		1	1.0

AGENCY	FISCAL YEAR	QUARTERS	ADMISSIONS	EXITS	COMPLETED	NOT COMPLETED	ACTIVE PARTICIPANTS	COMPLETION RATE %	CUMULATIVE COMPLETION RATE %	PARTICIPANTS SERVED	CUMULATIVE PARTICIPANTS SERVED	AVERAGE DAILY POPULATION (ADP)
YEC - Belle Glade												
	2012	October, November, December	18	9	9	0	60	100.0	100.0	69	69	59.7
	2012	January, February, March	12	6	6	0	66	100.0	100.0	72	81	64.1
	2012	April, May, June	23	11	11	0	78	100.0	100.0	89	104	71.3
	2012	July, August, September	5	37	37	0	46	100.0	100.0	83	109	64.9
	2012	<u>Fiscal Year Total</u>	58	63	63	0			100.0		109	65.0
	2013	October, November, December	0	0			46			46	46	46.0
	2013	January, February, March	18	11	11	0	53	100.0	100.0	64	64	54.3
	2013	April, May, June	8	6	6	0	55	100.0	100.0	61	72	51.7
	2013	July, August, September	10	17	17	0	48	100.0	100.0	65	82	52.9
	2013	<u>Fiscal Year Total</u>	36	34	34	0			100.0		82	51.2
	2014	October, November, December	3	7	7	0	44	100.0	100.0	51	51	47.8
	2014	January, February, March	8	6	6	0	46	100.0	100.0	52	59	44.9
	2014	April, May, June	21	20	20	0	47	100.0	100.0	67	80	47.1
	2014	July, August, September	2	18	18	0	31	100.0	100.0	49	82	39.0
	2014	<u>Fiscal Year Total</u>	34	51	51	0			100.0		82	44.7

AGENCY	FISCAL YEAR	QUARTERS	ADMISSIONS	EXITS	COMPLETED	NOT COMPLETED	ACTIVE PARTICIPANTS	COMPLETION RATE %	CUMULATIVE COMPLETION RATE %	PARTICIPANTS SERVED	CUMULATIVE PARTICIPANTS SERVED	AVERAGE DAILY POPULATION (ADP)
YEC - Lake Worth												
	2012	October, November, December	0	7	7	0	27	100.0	100.0	34	34	32.3
	2012	January, February, March	0	0			27		100.0	27	34	27.0
	2012	April, May, June	12	0			39		100.0	39	46	35.1
	2012	July, August, September	0	2	2	0	37	100.0	100.0	39	46	38.4
	2012	<u>Fiscal Year Total</u>	12	9	9	0			100.0		46	33.2
	2013	October, November, December	0	0			37			37	37	37.0
	2013	January, February, March	26	10	10	0	53	100.0	100.0	63	63	51.9
	2013	April, May, June	31	17	17	0	67	100.0	100.0	84	94	48.4
	2013	July, August, September	38	84	84	0	21	100.0	100.0	105	132	53.1
	2013	<u>Fiscal Year Total</u>	95	111	111	0			100.0		132	47.6
	2014	October, November, December	0	5	5	0	16	100.0	100.0	21	21	18.6
	2014	January, February, March	23	3	3	0	36	100.0	100.0	39	44	21.8
	2014	April, May, June	10	24	24	0	22	100.0	100.0	46	54	30.6
	2014	July, August, September	1	23	23	0	0	100.0	100.0	23	55	18.0
	2014	<u>Fiscal Year Total</u>	34	55	55	0			100.0		55	22.3

AGENCY	FISCAL YEAR	QUARTERS	ADMISSIONS	EXITS	COMPLETED	NOT COMPLETED	ACTIVE PARTICIPANTS	COMPLETION RATE %	CUMULATIVE COMPLETION RATE %	PARTICIPANTS SERVED	CUMULATIVE PARTICIPANTS SERVED	AVERAGE DAILY POPULATION (ADP)
YEC - Riviera Beach												
	2012	October, November, December	26	20	20	0	73	100.0	100.0	93	93	68.8
	2012	January, February, March	24	51	51	0	46	100.0	100.0	97	117	64.0
	2012	April, May, June	13	6	6	0	53	100.0	100.0	59	130	52.5
	2012	July, August, September	0	13	13	0	40	100.0	100.0	53	130	42.3
	2012	<u>Fiscal Year Total</u>	63	90	90	0			100.0		130	56.9
	2013	October, November, December	2	0			42			42	42	40.4
	2013	January, February, March	44	25	25	0	61	100.0	100.0	86	86	59.6
	2013	April, May, June	27	24	24	0	64	100.0	100.0	88	113	60.8
	2013	July, August, September	6	15	15	0	55	100.0	100.0	70	119	55.4
	2013	<u>Fiscal Year Total</u>	79	64	64	0			100.0		119	54.1
	2014	October, November, December	17	11	11	0	61	100.0	100.0	72	72	57.8
	2014	January, February, March	17	24	24	0	54	100.0	100.0	78	89	57.7
	2014	April, May, June	46	24	24	0	76	100.0	100.0	100	135	55.4
	2014	July, August, September	16	57	57	0	35	100.0	100.0	92	151	50.1
	2014	<u>Fiscal Year Total</u>	96	116	116	0			100.0		151	55.2



Detailed Report: Recidivism Rates

AGENCY	GROUP * participants exiting programming during dates listed below.	COMPLETED	NOT COMPLETED	Cumulative Recidivism												3 Year Recidivism Target %
				Six Month Recidivism				1 Year Recidivism				3 Year Recidivism				
				Completed		Not Completed		Completed		Not Completed		Completed		Not Completed		
N	%	N	%	N	%	N	%	N	%	N	%	N	%	N	%	
Delinquency Drug Court																
	October 1, 2010 to December 31, 2013	20	19	2	10.0	4	21.1	3	15.0	4	21.1	5	25.0	5	26.3	25.0
	January 1, 2011 to March 31, 2014	18	23	2	11.1	4	17.4	3	16.7	4	17.4	5	27.8	5	21.7	25.0
	April 1, 2011 to June 30, 2014	13	24	1	7.7	4	16.7	2	15.4	4	16.7	3	23.1	5	20.8	25.0
	July 1, 2011 to September 30, 2014	10	26	1	10.0	4	15.4	1	10.0	4	15.4	2	20.0	5	19.2	25.0
Track 1 - Drug Court																
	October 1, 2010 to December 31, 2013	329	327	3	0.9	18	5.5	5	1.5	31	9.5	8	2.4	49	15.0	15.0
	January 1, 2011 to March 31, 2014	313	313	3	1.0	18	5.8	5	1.6	28	8.9	7	2.2	43	13.7	15.0
	April 1, 2011 to June 30, 2014	296	307	3	1.0	17	5.5	3	1.0	25	8.1	5	1.7	37	12.1	15.0
	July 1, 2011 to September 30, 2014	277	297	2	0.7	15	5.1	2	0.7	21	7.1	4	1.4	30	10.1	15.0

Recidivism is defined as arrest and conviction after participant has exited programming. For delinquency drug court, recidivism is defined as arrest and adjudicated delinquent after participant has exited programming. The three follow-up periods (six months, 1 year, 3 years) refer to within timeframes and as such represent a cumulative total/rates.

AGENCY	GROUP * participants exiting programming during dates listed below.	COMPLETED	NOT COMPLETED	Cumulative Recidivism												3 Year Recidivism Target %
				Six Month Recidivism				1 Year Recidivism				3 Year Recidivism				
				Completed		Not Completed		Completed		Not Completed		Completed		Not Completed		
N	%	N	%	N	%	N	%	N	%	N	%	N	%			
Track 2 - Co-Occurring																
	October 1, 2010 to December 31, 2013	39	58	1	2.6	7	12.1	1	2.6	10	17.2	1	2.6	12	20.7	15.0
	January 1, 2011 to March 31, 2014	43	55	1	2.3	5	9.1	1	2.3	7	12.7	1	2.3	9	16.4	15.0
	April 1, 2011 to June 30, 2014	43	53	1	2.3	4	7.5	1	2.3	6	11.3	1	2.3	8	15.1	15.0
	July 1, 2011 to September 30, 2014	40	54	0	0.0	4	7.4	0	0.0	6	11.1	0	0.0	7	13.0	15.0
Track 3 - Prescription																
	October 1, 2010 to December 31, 2013	14	23	0	0.0	1	4.3	0	0.0	2	8.7	0	0.0	3	13.0	15.0
	January 1, 2011 to March 31, 2014	15	28	0	0.0	1	3.6	0	0.0	2	7.1	0	0.0	3	10.7	15.0
	April 1, 2011 to June 30, 2014	21	38	0	0.0	1	2.6	0	0.0	2	5.3	0	0.0	3	7.9	15.0
	July 1, 2011 to September 30, 2014	26	40	0	0.0	1	2.5	0	0.0	2	5.0	0	0.0	3	7.5	15.0
Civil Drug Court - Assessment																
	October 1, 2010 to December 31, 2013	131	0	5	3.8	0		14	10.7	0		23	17.6	0		15.0
	January 1, 2011 to March 31, 2014	124	0	5	4.0	0		14	11.3	0		21	16.9	0		15.0
	April 1, 2011 to June 30, 2014	116	0	5	4.3	0		13	11.2	0		18	15.5	0		15.0
	July 1, 2011 to September 30, 2014	109	0	5	4.6	0		12	11.0	0		16	14.7	0		15.0

Recidivism is defined as arrest and conviction after participant has exited programming. For delinquency drug court, recidivism is defined as arrest and adjudicated delinquent after participant has exited programming. The three follow-up periods (six months, 1 year, 3 years) refer to within timeframes and as such represent a cumulative total/rates.

AGENCY	GROUP * participants exiting programming during dates listed below.	COMPLETED	NOT COMPLETED	Cumulative Recidivism												3 Year Recidivism Target %
				Six Month Recidivism				1 Year Recidivism				3 Year Recidivism				
				Completed		Not Completed		Completed		Not Completed		Completed		Not Completed		
N	%	N	%	N	%	N	%	N	%	N	%	N	%			
Civil Drug Court - Treatment																
	October 1, 2010 to December 31, 2013	119	78	2	1.7	13	16.7	5	4.2	17	21.8	9	7.6	21	26.9	15.0
	January 1, 2011 to March 31, 2014	106	71	2	1.9	10	14.1	4	3.8	14	19.7	7	6.6	18	25.4	15.0
	April 1, 2011 to June 30, 2014	104	62	1	1.0	8	12.9	3	2.9	12	19.4	5	4.8	16	25.8	15.0
	July 1, 2011 to September 30, 2014	101	50	1	1.0	5	10.0	3	3.0	8	16.0	4	4.0	11	22.0	15.0
Pre-Release - RESTORE																
	October 1, 2010 to December 31, 2013	293	59	24	8.2	2	3.4	35	11.9	7	11.9	46	15.7	10	16.9	34.0
	January 1, 2011 to March 31, 2014	308	62	25	8.1	2	3.2	36	11.7	7	11.3	47	15.3	10	16.1	34.0
	April 1, 2011 to June 30, 2014	323	63	25	7.7	2	3.2	36	11.1	7	11.1	47	14.6	10	15.9	34.0
	July 1, 2011 to September 30, 2014	339	61	25	7.4	2	3.3	36	10.6	7	11.5	47	13.9	9	14.8	34.0
Riviera Beach - RESTORE																
	October 1, 2010 to December 31, 2013	6	19	1	16.7	3	15.8	1	16.7	3	15.8	1	16.7	3	15.8	34.0
	January 1, 2011 to March 31, 2014	7	20	1	14.3	3	15.0	1	14.3	3	15.0	1	14.3	3	15.0	34.0
	April 1, 2011 to June 30, 2014	10	23	1	10.0	3	13.0	1	10.0	3	13.0	1	10.0	3	13.0	34.0
	July 1, 2011 to September 30, 2014	10	23	1	10.0	3	13.0	1	10.0	3	13.0	1	10.0	3	13.0	34.0

Recidivism is defined as arrest and conviction after participant has exited programming. For delinquency drug court, recidivism is defined as arrest and adjudicated delinquent after participant has exited programming. The three follow-up periods (six months, 1 year, 3 years) refer to within timeframes and as such represent a cumulative total/rates.

AGENCY	GROUP * participants exiting programming during dates listed below.	COMPLETED	NOT COMPLETED	Cumulative Recidivism												3 Year Recidivism Target %
				Six Month Recidivism				1 Year Recidivism				3 Year Recidivism				
				Completed		Not Completed		Completed		Not Completed		Completed		Not Completed		
N	%	N	%	N	%	N	%	N	%	N	%	N	%			
Goodwill - RESTORE																
	October 1, 2010 to December 31, 2013	13	56	1	7.7	8	14.3	2	15.4	10	17.9	2	15.4	11	19.6	34.0
	January 1, 2011 to March 31, 2014	13	63	1	7.7	8	12.7	2	15.4	10	15.9	2	15.4	11	17.5	34.0
	April 1, 2011 to June 30, 2014	13	64	1	7.7	8	12.5	2	15.4	10	15.6	2	15.4	11	17.2	34.0
	July 1, 2011 to September 30, 2014	17	70	1	5.9	8	11.4	2	11.8	10	14.3	2	11.8	11	15.7	34.0
Lord's Place - RESTORE																
	October 1, 2010 to December 31, 2013	10	61	1	10.0	5	8.2	2	20.0	6	9.8	3	30.0	7	11.5	34.0
	January 1, 2011 to March 31, 2014	18	69	1	5.6	5	7.2	2	11.1	6	8.7	3	16.7	7	10.1	34.0
	April 1, 2011 to June 30, 2014	18	73	1	5.6	5	6.8	2	11.1	6	8.2	3	16.7	7	9.6	34.0
	July 1, 2011 to September 30, 2014	29	85	1	3.4	5	5.9	2	6.9	6	7.1	3	10.3	7	8.2	34.0
Riviera Beach - COMMUNITY																
	October 1, 2010 to December 31, 2013	42	50	3	7.1	5	10.0	5	11.9	10	20.0	5	11.9	12	24.0	34.0
	January 1, 2011 to March 31, 2014	43	50	3	7.0	5	10.0	5	11.6	10	20.0	5	11.6	12	24.0	34.0
	April 1, 2011 to June 30, 2014	43	53	3	7.0	5	9.4	5	11.6	10	18.9	5	11.6	12	22.6	34.0
	July 1, 2011 to September 30, 2014	54	57	3	5.6	5	8.8	5	9.3	10	17.5	5	9.3	12	21.1	34.0

Recidivism is defined as arrest and conviction after participant has exited programming. For delinquency drug court, recidivism is defined as arrest and adjudicated delinquent after participant has exited programming. The three follow-up periods (six months, 1 year, 3 years) refer to within timeframes and as such represent a cumulative total/rates.

AGENCY	GROUP * participants exiting programming during dates listed below.	COMPLETED	NOT COMPLETED	Cumulative Recidivism												3 Year Recidivism Target %
				Six Month Recidivism				1 Year Recidivism				3 Year Recidivism				
				Completed		Not Completed		Completed		Not Completed		Completed		Not Completed		
N	%	N	%	N	%	N	%	N	%	N	%	N	%			
Goodwill - COMMUNITY																
	October 1, 2010 to December 31, 2013	22	44	0	0.0	2	4.5	3	13.6	3	6.8	3	13.6	5	11.4	34.0
	January 1, 2011 to March 31, 2014	22	45	0	0.0	2	4.4	3	13.6	3	6.7	3	13.6	5	11.1	34.0
	April 1, 2011 to June 30, 2014	23	46	0	0.0	2	4.3	3	13.0	3	6.5	3	13.0	5	10.9	34.0
	July 1, 2011 to September 30, 2014	45	71	0	0.0	2	2.8	3	6.7	3	4.2	3	6.7	5	7.0	34.0
Lord's Place - COMMUNITY																
	July 1, 2011 to September 30, 2014	7	9	0	0.0	0	0.0	0	0.0	0	0.0	0	0.0	0	0.0	34.0
Goodwill - JAIL																
	July 1, 2011 to September 30, 2014	0	1	0		0	0.0	0		0	0.0	0		0	0.0	34.0
Lord's Place - JAIL																
	October 1, 2010 to December 31, 2013	0	1	0		1	100.0	0		1	100.0	0		1	100.0	34.0
	January 1, 2011 to March 31, 2014	0	1	0		1	100.0	0		1	100.0	0		1	100.0	34.0
	April 1, 2011 to June 30, 2014	0	1	0		1	100.0	0		1	100.0	0		1	100.0	34.0
	July 1, 2011 to September 30, 2014	0	1	0		1	100.0	0		1	100.0	0		1	100.0	34.0

Recidivism is defined as arrest and conviction after participant has exited programming. For delinquency drug court, recidivism is defined as arrest and adjudicated delinquent after participant has exited programming. The three follow-up periods (six months, 1 year, 3 years) refer to within timeframes and as such represent a cumulative total/rates.

AGENCY	GROUP * participants exiting programming during dates listed below.	COMPLETED	NOT COMPLETED	Cumulative Recidivism												3 Year Recidivism Target %
				Six Month Recidivism				1 Year Recidivism				3 Year Recidivism				
				Completed		Not Completed		Completed		Not Completed		Completed		Not Completed		
N	%	N	%	N	%	N	%	N	%	N	%	N	%			
Lord's Place - TJC																
	October 1, 2010 to December 31, 2013	38	58	1	2.6	3	5.2	1	2.6	6	10.3	1	2.6	7	12.1	34.0
	January 1, 2011 to March 31, 2014	40	66	1	2.5	4	6.1	1	2.5	7	10.6	1	2.5	8	12.1	34.0
	April 1, 2011 to June 30, 2014	51	92	1	2.0	4	4.3	1	2.0	7	7.6	1	2.0	8	8.7	34.0
	July 1, 2011 to September 30, 2014	51	98	1	2.0	4	4.1	1	2.0	7	7.1	1	2.0	8	8.2	34.0
BTAF - Juvenile Reentry																
	April 1, 2011 to June 30, 2014	0	3	0		0	0.0	0		0	0.0	0		0	0.0	40.0
	July 1, 2011 to September 30, 2014	1	11	0	0.0	0	0.0	0	0.0	0	0.0	0	0.0	0	0.0	40.0
BTAF - Choice to Change																
	April 1, 2011 to June 30, 2014	0	2	0		0	0.0	0		0	0.0	0		0	0.0	40.0
	July 1, 2011 to September 30, 2014	1	5	0	0.0	0	0.0	0	0.0	0	0.0	0	0.0	0	0.0	40.0
BTAF - Goodwill																
	April 1, 2011 to June 30, 2014	0	1	0		0	0.0	0		0	0.0	0		0	0.0	40.0
	July 1, 2011 to September 30, 2014	1	4	0	0.0	0	0.0	0	0.0	0	0.0	0	0.0	0	0.0	40.0
BTAF - Vita Nova																
	July 1, 2011 to September 30, 2014	1	0	0	0.0	0		0	0.0	0		0	0.0	0		40.0

Recidivism is defined as arrest and conviction after participant has exited programming. For delinquency drug court, recidivism is defined as arrest and adjudicated delinquent after participant has exited programming. The three follow-up periods (six months, 1 year, 3 years) refer to within timeframes and as such represent a cumulative total/rates.

AGENCY	GROUP * participants exiting programming during dates listed below.	COMPLETED	NOT COMPLETED	Cumulative Recidivism												3 Year Recidivism Target %
				Six Month Recidivism				1 Year Recidivism				3 Year Recidivism				
				Completed		Not Completed		Completed		Not Completed		Completed		Not Completed		
N	%	N	%	N	%	N	%	N	%	N	%	N	%			
YEC - Belle Glade																
	October 1, 2010 to December 31, 2013	185		1	0.5			2	1.1			4	2.2		0.0	
	January 1, 2011 to March 31, 2014	159		1	0.6			2	1.3			3	1.9		0.0	
	April 1, 2011 to June 30, 2014	179		1	0.6			2	1.1			3	1.7		0.0	
	July 1, 2011 to September 30, 2014	178		1	0.6			2	1.1			3	1.7		0.0	
YEC - Lake Worth																
	October 1, 2010 to December 31, 2013	273		0	0.0			0	0.0			0	0.0		0.0	
	January 1, 2011 to March 31, 2014	248		0	0.0			0	0.0			0	0.0		0.0	
	April 1, 2011 to June 30, 2014	207		0	0.0			0	0.0			0	0.0		0.0	
	July 1, 2011 to September 30, 2014	165		0	0.0			0	0.0			0	0.0		0.0	
YEC - Riviera Beach																
	October 1, 2010 to December 31, 2013	266		5	1.9			6	2.3			8	3.0		0.0	
	January 1, 2011 to March 31, 2014	267		5	1.9			5	1.9			6	2.2		0.0	
	April 1, 2011 to June 30, 2014	283		4	1.4			4	1.4			5	1.8		0.0	
	July 1, 2011 to September 30, 2014	258		3	1.2			3	1.2			3	1.2		0.0	

Recidivism is defined as arrest and conviction after participant has exited programming. For delinquency drug court, recidivism is defined as arrest and adjudicated delinquent after participant has exited programming. The three follow-up periods (six months, 1 year, 3 years) refer to within timeframes and as such represent a cumulative total/rates.

AGENCY	GROUP * participants exiting programming during dates listed below.	COMPLETED	NOT COMPLETED	Cumulative Recidivism												3 Year Recidivism Target %
				Six Month Recidivism				1 Year Recidivism				3 Year Recidivism				
				Completed		Not Completed		Completed		Not Completed		Completed		Not Completed		
N	%	N	%	N	%	N	%	N	%	N	%	N	%			
YEC - West Palm Beach																
	October 1, 2010 to December 31, 2013	1,225		9	0.7			13	1.1			22	1.8		0.0	
	January 1, 2011 to March 31, 2014	1,147		8	0.7			11	1.0			20	1.7		0.0	
	April 1, 2011 to June 30, 2014	991		6	0.6			9	0.9			15	1.5		0.0	
	July 1, 2011 to September 30, 2014	720		6	0.8			8	1.1			11	1.5		0.0	
YEC - Boynton Beach																
	October 1, 2010 to December 31, 2013	283		5	1.8			5	1.8			7	2.5		0.0	
	January 1, 2011 to March 31, 2014	229		4	1.7			4	1.7			6	2.6		0.0	
	April 1, 2011 to June 30, 2014	194		4	2.1			4	2.1			6	3.1		0.0	
	July 1, 2011 to September 30, 2014	172		4	2.3			4	2.3			6	3.5		0.0	

Recidivism is defined as arrest and conviction after participant has exited programming. For delinquency drug court, recidivism is defined as arrest and adjudicated delinquent after participant has exited programming. The three follow-up periods (six months, 1 year, 3 years) refer to within timeframes and as such represent a cumulative total/rates.

LAW ENFORCEMENT EXCHANGE (LEX)



Palm Beach County Law Enforcement eXchange

MEMORANDUM DATE: February 17, 2015

TO: Criminal Justice Commission
CJC Program Monitoring and Evaluation Sub-Committee

FROM: Chief Frank Kitzerow; LEX Chairman

TITLE: Fiscal year 2014, Year End Report
(JAG: 2014-JAGC-2327 Contract 2014-JAGC-PALM-1-E5-214)

MEMO # LEX14-015

BACKGROUND:

The Palm Beach County Law Enforcement Exchange (LEX) is directed by the LEX Board of Directors who meets quarterly through the year. The LEX Board of Directors is comprised of Palm Beach County Chiefs of Police who give the LEX Countywide Program Director and LEX staff specific vision and direction of how the program will best serve our citizens and the law enforcement agencies throughout Palm Beach County.

In October of 2013, the Criminal Justice Commission (CJC) dedicated funding to the Pam Beach County Law Enforcement Exchange (LEX) from the Florida Department of Law Enforcement (FDLE) Justice Assistance Grant (JAGC: 2014-JAGC-2327 Contract 2014-JAGC-PALM-1-E5-214) for a LEX Countywide Program Director.

The CJC oversees the program monitoring and evaluation of the JAGC Grant funded position by receiving quarterly reports by email from the LEX Countywide Program Director on the program's growth, operation and deliverables.

PERFORMANCE:

This report will give the CJC an overview of the performance of the LEX Countywide Program Director for the October 1, 2013, through the September 30, 2014, duration of the grant.

Additional information and statistics from October 1, 2014 through January 1, 2015 are also included covering the extension of the JAGC grant's reporting period in recognition that the position of LEX Countywide Program Director was not filled until June 1, 2014.

In 2014, the LEX Countywide Program Director had proven to be proactive in communicating with all law enforcement agencies. Here is a brief overview of activities completed by the Director.

- Reviewed the LEX program and how it was being used throughout Palm Beach County
- Worked with the LEX, ISS staff to brainstorm a simpler platform that would be used by road patrol, investigators, and analysts alike. This new site is being released as LEX 3.0.
- Began weekly meetings with all staff related to LEX.
- Has prioritized the simplification of the LEX site, making it more user friendly.
- Has moved the single bar search appliance, similar to “Google” into Proof of Concept at ISS.
- Has attended and presented the LEX platform at every Regional Intelligence Meeting
- Has presented the LEX 3.0 program at the South Florida Property Crimes Symposium in Miami, Florida
- Has presented the LEX 3.0 program to the Florida LETTR / FINDER consortium in Orlando
- Has worked with Staff on and demonstrated the new LEX 3.0 which is going live in the first Quarter of 2015.
- Has completed the new training manuals, 3 panel flyers, and PowerPoint presentations for LEX 3.0 to include:
 - LEX 3.0 Agency Administrators Manual
 - LEX 3.0 Data Brokers Manual
 - LEX 3.0 Road Patrol Officers Manual
- Began training the following agency administrative personnel on the LEX 3.0 program:
 - LEX 3.0 Agency Administrators: responsible for inputting the specific information needed to allow access to the LEX system; assuring those who are given access meet the CJIS requirements and training
 - LEX 3.0 Data Brokers; upload and monitor agency bulletins an Regional Intelligence Meeting (RIM) information
- This training also included a review and familiarization of the new LEX 3.0 Program. Has presented the LEX 3.0 program to the Palm Beach County Law Enforcement Planning Council and to the Palm Beach County Association of Chiefs of Police with positive remarks and feedback about the direction of the program and how it will affect Palm Beach County citizens.
- Has solidified and strengthened the communications and the relationship with the Law Enforcement Technology Training and Research (LETTR) organization and the Federated Integrated Network for Data Exchange and Retrieval (FINDER) consortium. This relationship gives all LEX users in Palm Beach County direct access and query capabilities to Agency RMS data from over 200 law enforcement agencies and 27 Counties in Florida.
- Has developed a LEX Successes Recognition Program for the primary users of LEX. With the development of LEX recognition pins, those LEX users who work a case to conclusion and conviction of a suspect, while working with another agency, will be awarded a LEX

lapel pin. The Program will recognize how many cases the officers have developed by data found in the LEX program.

- All 26 law enforcement agencies have access to LEX and can query over 200 agencies state wide. Additionally, in the 2013 / 2014 reporting period (beginning June 1, 2014), the LEX Countywide Program Director oversaw and was able to work with the following agencies who are now contributing RMS data into the LEX system:
 - **Jupiter Police Department**
 - **Juno Beach Police Department**
 - **West Palm Beach Police Department**
 - **Delray Beach Police Department**
 - **Lantana Police Department**
 - **Palm Beach Police Department**
 - **North Palm Beach Police Department**
 - **Riviera Beach Police Department**
 - **Atlantis Police Department**

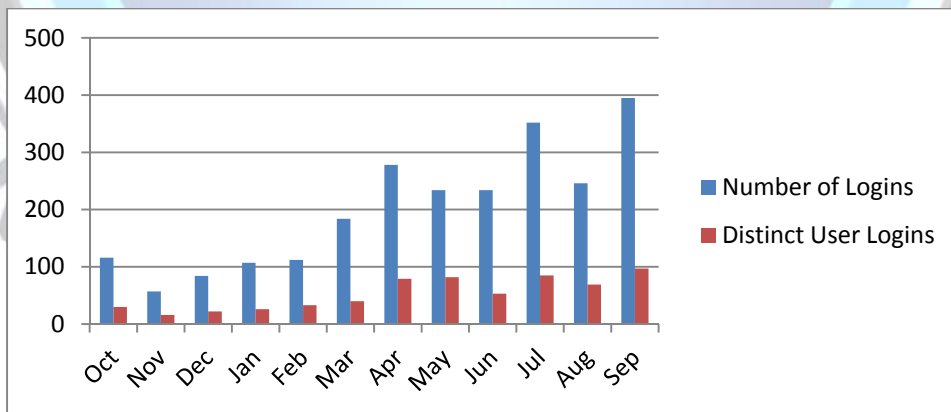
This brings the number of contributing agencies to 11. This means the agencies RMS data is now being contributed to LEX and is query able to all law enforcement agencies in Palm Beach County.

STATISTICS

Here are the charts demonstrating the LEX users, and attendance at the Palm Beach County Regional Intelligence meetings:

User Logins:

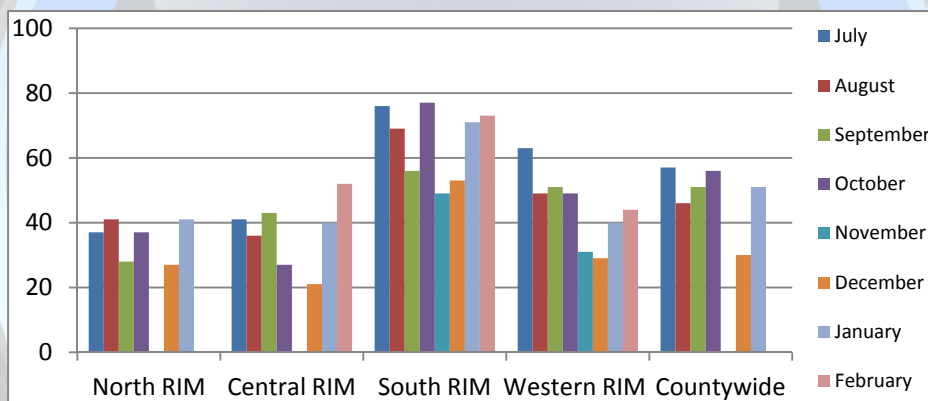
October 1, 2013 through September 30, 2014



Distinct User / Query Requests for October 1, 2013 thru September 30, 2014:

	Number of Logins	Distinct User Logins	Month over Month %
1			
2 Oct	116	30	
3 Nov	57	16	-103.51%
4 Dec	84	22	47.37%
5 Jan	107	26	21.50%
6 Feb	112	33	4.46%
7 Mar	184	40	39.13%
8 Apr	278	79	33.81%
9 May	234	82	-18.80%
10 Jun	234	53	0.00%
11 Jul	352	85	33.52%
12 Aug	246	69	-43.09%
13 Sep	395	97	37.72%
14 Average Usage Per Month	200		41.98%

Regional Intelligence Meeting Attendees: (Statistics were counted after the Director Position was filled, thru February 2015)



BUDGETING:

The LEX Countywide Program Director meets with the LEX staff weekly. During these meetings, the LEX Countywide Program Director has established GANTT charts and priority lists for prioritized items and tasks to be completed by LEX staff.

The Director also has begun the review of necessities for the LEX program over the next 5 years by identifying capital expenditure needs, maintenance costs and potentials, personnel costs, and identification of miscellaneous items that will be required.

The LEX Countywide Program Director has begun the process of identifying additional funding opportunities and working towards assuring a long-term, self-sustainable funding solution for the LEX program.

The LEX team recognizes the importance of contributions to the program countywide. The LEX Countywide Program Director finds the relationship between the LEX Board of Directors, the Palm Beach County Sheriff's Office, the Palm Beach County Criminal Justice Commission, The LETTR/FINDER group, the Palm Beach County law enforcement agencies, and most of all, the Palm Beach County ISS to be exemplary and sets a standard of cooperation that is unprecedented in law enforcement today.

Additional work is needed to assure the funding is available for this project. All of the agencies noted above are working together to make this happen.

Here is an example of some of the work completed by the LEX team:

ANTICIPATED LEX EXPENDITURE TIMELINE BY QUARTER

	8/31/14 Balance	FY 2015				FY 2016			
		1st Quarter Oct-Dec 2014	2nd Quarter Jan-Mar 2015	3rd Quarter Apr-Jun 2015	4th Quarter Jul-Sep 2015	1st Quarter Oct-Dec 2015	2nd Quarter Jan-Mar 2016	3rd Quarter Apr-Jun 2016	4th Quarter Jul-Sep 2016
Beginning	\$ 319,738								
Receipts	ISS in-kind below				\$ 112,000				\$ 112,000
	LEX								
	CJC JAG Grant	\$ 25,000	\$ 25,000	\$ 25,000	\$ 25,000				
Expenditures	LETTR				\$ 92,500				\$ 92,500
	CW LEX Position	\$ 25,000	\$ 25,000	\$ 25,000	\$ 25,000	\$ 25,000	\$ 25,000	\$ 25,000	\$ 25,000
	IT Infrastructure	\$ 900			\$ 75,000				\$ 5,000
	Maintenance					\$ 25,000		\$ 20,700	\$ 14,000
	Miscellaneous	\$ 1,500	\$ 1,500	\$ 1,600	\$ 1,500	\$ 1,500	\$ 1,500	\$ 1,600	\$ 1,500
		\$ 27,400	\$ 26,500	\$ 26,600	\$ 194,000	\$ 51,500	\$ 26,500	\$ 47,300	\$ 138,000
Running Balance	\$ 307,491	\$ 317,338	\$ 315,838	\$ 314,238	\$ 257,238	\$ 205,738	\$ 179,238	\$ 131,938	\$ 105,938
ISS Contribution		\$97,916	\$97,916	\$97,916	\$97,916	\$97,916	\$97,916	\$97,916	\$97,916
Funding Percentages	NOTES:								
17% CJC	This does not reflect in-kind contributions from the Sheriff's Office.								
18% LEX Agencies	Beginning balance includes LEX Contributions plus ISS Capital of \$20,443								
65% ISS	Enterprise server (and SAN) pre-paid maintenance expires December, 2016 (FY 2017) - \$25K								
	Load Balancers two-year maintenance paid in October, 2013, need to replace for \$70K and \$14K maintenance each year afterward								
	Miscellaneous = Incorporation Fees, Insurance, Taxes, Supplies, Training documents, Recognition Program, Travel, etc.								
2/6/2015									

The assistance provided by the Palm Beach County Information System Services (ISS) is integral in assuring the Palm Beach County citizens are protected and served by all law enforcement officers who share the data available to them in LEX.

With the contributions noted here, this assistance from CJC and dedication by the ISS and our County Administrator, Robert Weisman, assures the quality of service and expectations of the citizens of Palm Beach County, and the law enforcement agencies countywide. Here is an example of their contributions:

Funding Percentages
17% CJC
18% LEX Agencies
65% ISS

SUMMARY

In recognition that the LEX Countywide Program Director came on in June of 2014, there is still a lot of work to be done.

The LEX Countywide Program Director continues to support and promote the LEX project and is now prepared to move forward with the training cycle of the Road Patrol Officers countywide. There will be a projected, noticeable increase in users and queries in the system once the new LEX 3.0 homepage is put into production. This will happen in the first quarter of 2015.

With the pro-active, dedicated and tenacious activity demonstrated by the Countywide Director, we have documented an increase of 42% in logins, user activity, agency queries, LEX recognition and support in Palm Beach County.

With the increase in contributors and additional growth presently being felt in LEX, there are strong indicators that moving the new LEX 3.0 into production will greatly increase user activity. This change in the program and its training countywide will far surpass the deliverables identified in the JAGC grant. This can only happen with the support of all who are presently contributing to the LEX project, and extending the contributions for the Countywide Program Director position in the coming year.

The LEX Countywide Director of Operations continues to move the program forward. A new initiative is being considered that will allow officers to query Automated License Plate Readers (ALPR) systems from all agencies in Palm Beach County that have the technology in place. This initiative will only strengthen the relationship with the agencies using the LEX data, and bring additional, highly valuable data to the users of LEX.