



**Palm Beach County
Criminal Justice Commission
Research and Planning Unit**

**Annual Planning Meeting
March 25, 2013**

CRIMINAL JUSTICE TRENDS

Data assembled and maintained by the Research and Planning Unit Staff:
Shahzia Hashmi, Criminal Justice Analyst
Katherine Hatos, Senior Criminal Justice Analyst
Candee Villapando, Criminal Justice Analyst

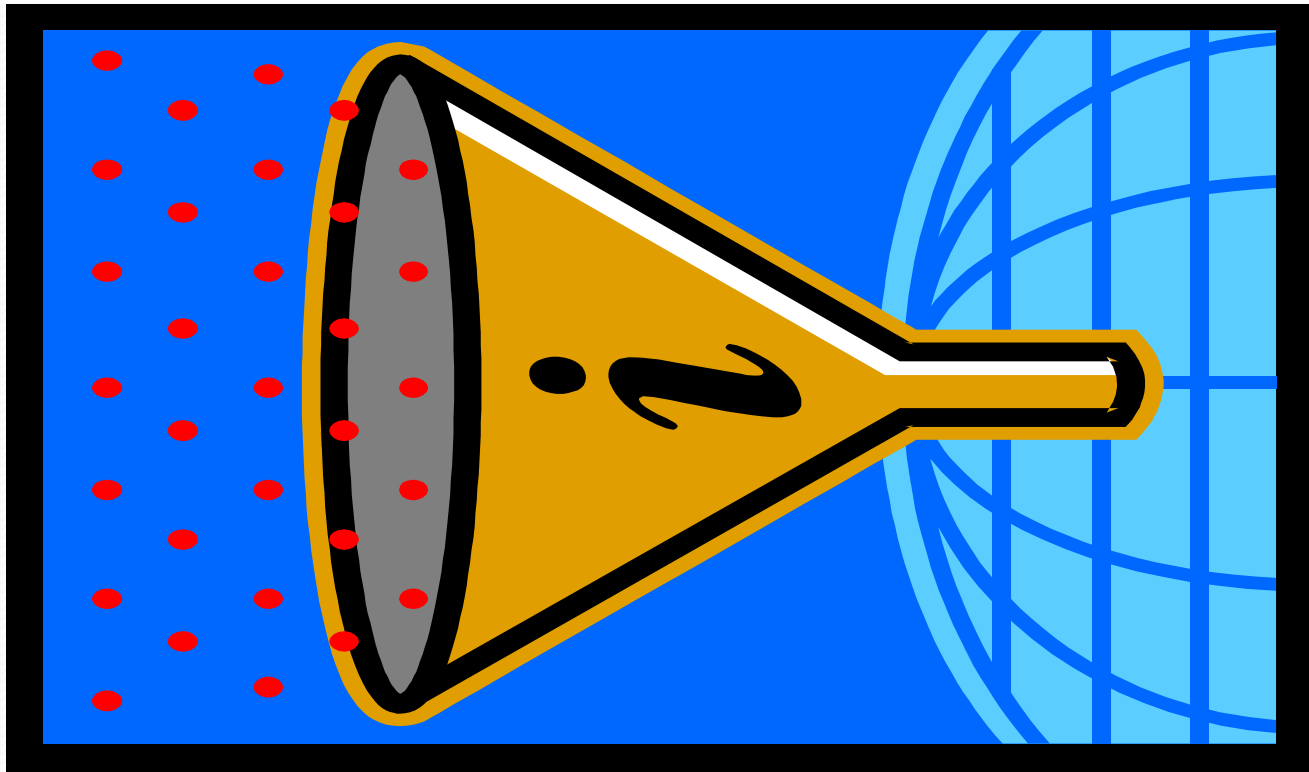
Common Terms

- Index Crime (Part I)
- Offenses
- Arrests
- Referrals
- Rates
- Direct File
- Incarceration Rates
- Average Daily Populations

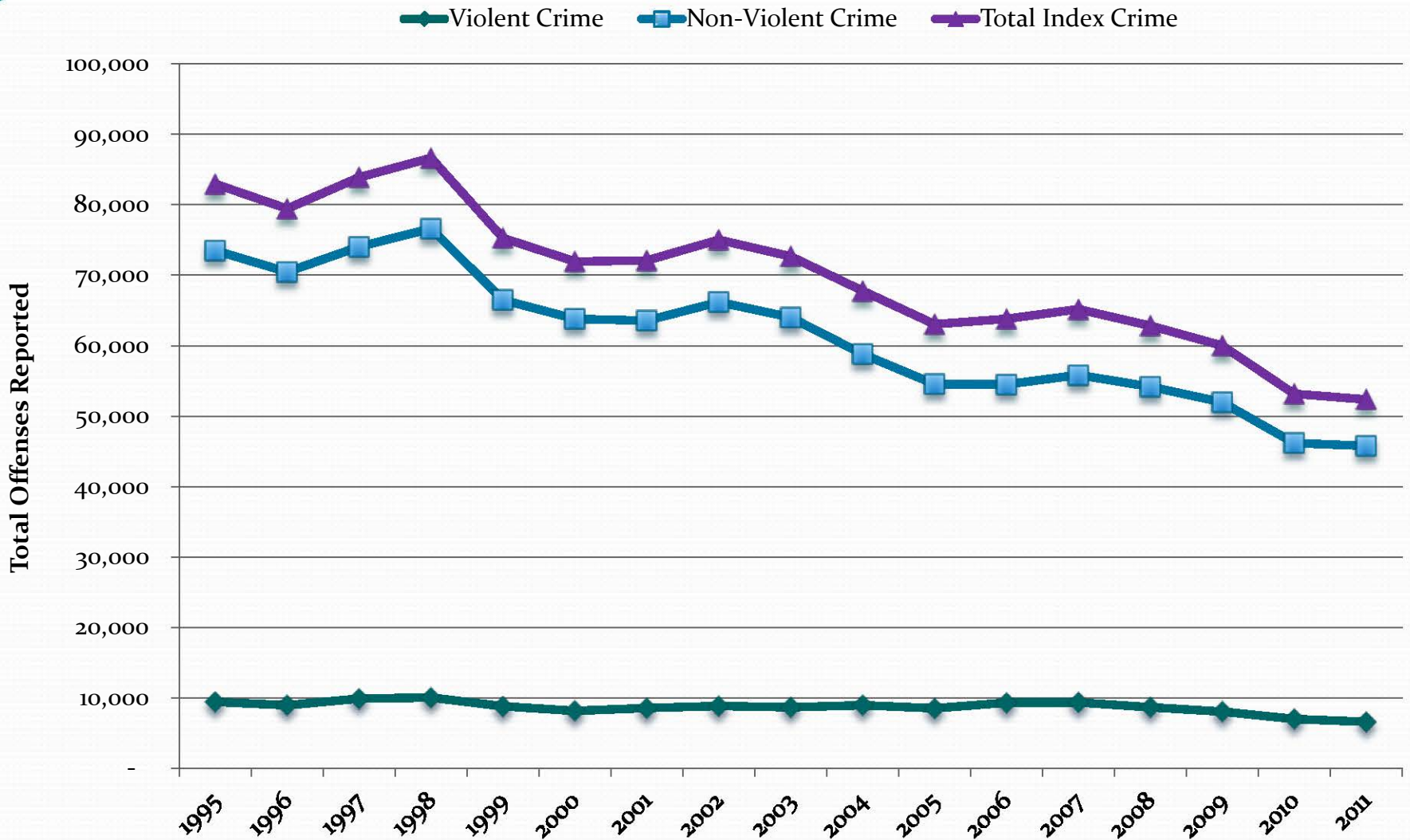
Authorities (i)

To request members of all agencies within the auspices of the board of county commissioners to provide the criminal justice commission in a timely manner with all data and information requested by the criminal justice commission, to appear at any meeting or hearing requested by the criminal justice commission, and to otherwise work in cooperation and good faith with the criminal justice commission in pursuing the criminal justice commission's objectives;

True Crime?

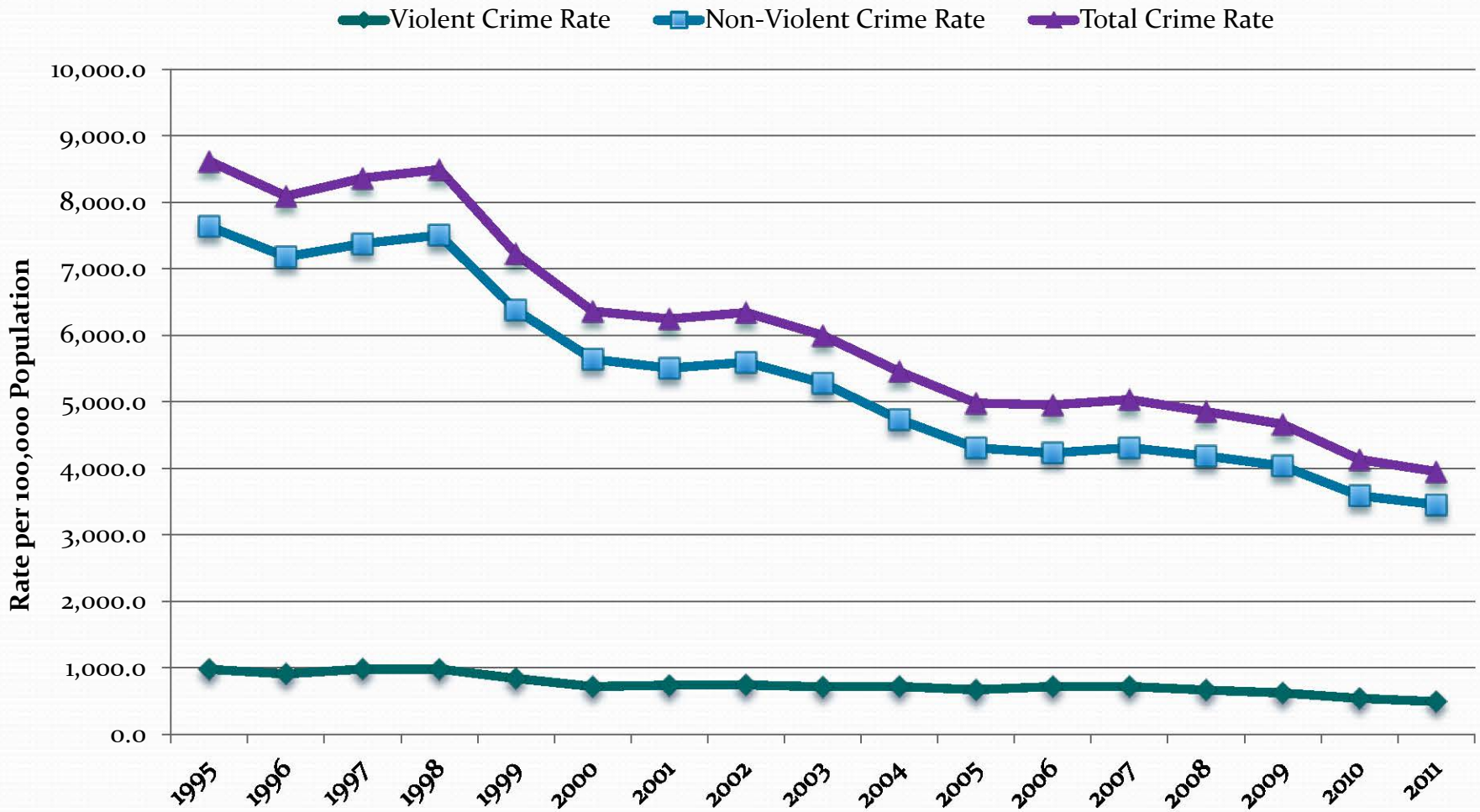


Index Crime Offenses in Palm Beach County, 1995-2011



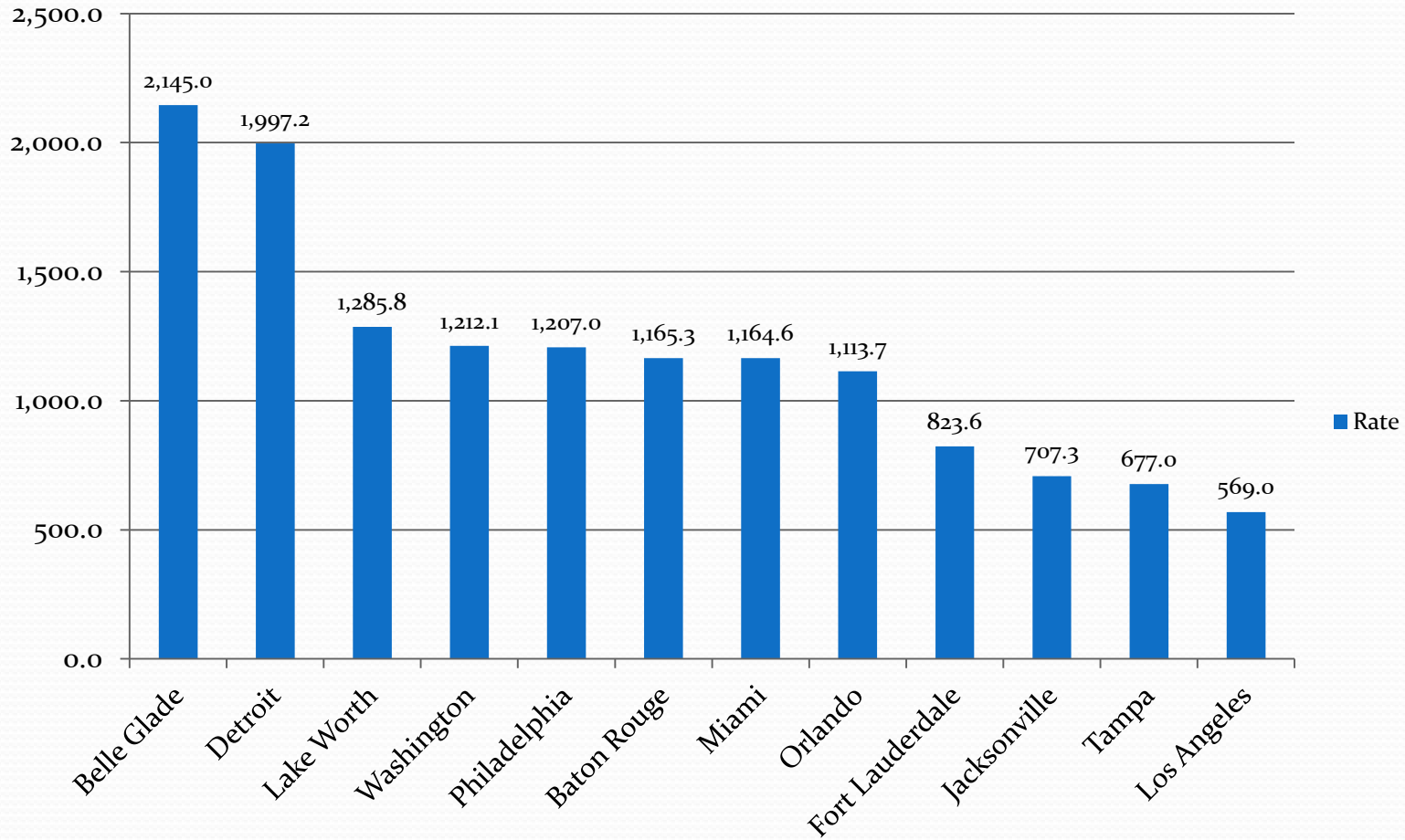
For Part I crimes only, categorized as violent crimes (murder, rape, robbery, aggravated assault) and non-violent/property crimes (burglary, larceny, motor vehicle theft). Source: Florida Department of Law Enforcement. Crime in Florida, Florida Uniform Crime Report, 1995-2011 [Computer program]. Tallahassee, FL : FDLE. Florida Statistical Analysis Center.

Index Offense Rate in Palm Beach County, 1995-2011



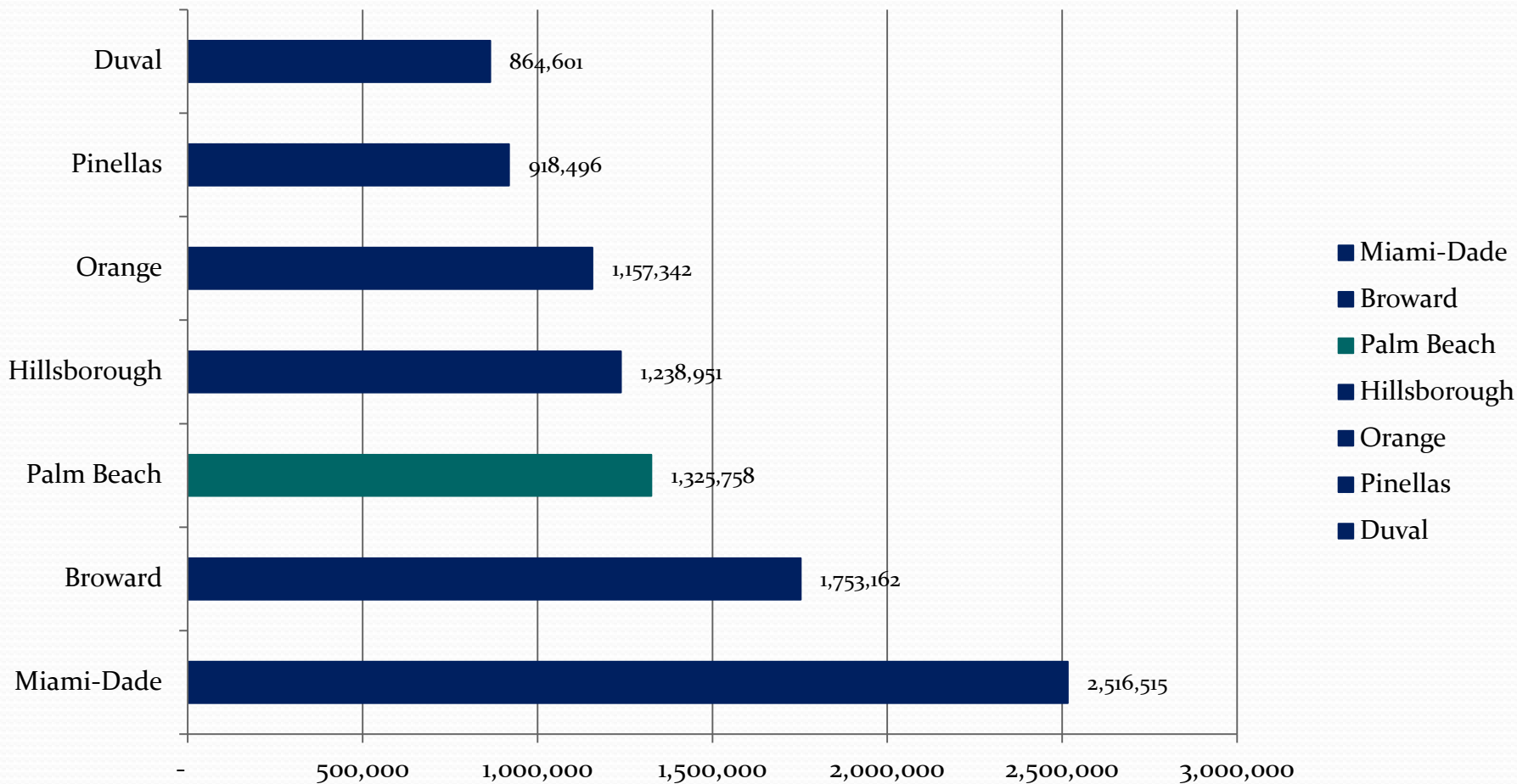
For Part I crimes only, categorized as violent crimes (murder, rape, robbery, aggravated assault) and non-violent/property crimes (burglary, larceny, motor vehicle theft). Source: Florida Department of Law Enforcement. Crime in Florida, Florida Uniform Crime Report, 1995-2011 [Computer program]. Tallahassee, FL: FDLE. Florida Statistical Analysis Center.

Violent Crime Rate per 100,000 Comparison, 2009 -2011



United States Department of Justice, Federal Bureau of Investigation. (March 2013). *Crime in the United States, 2009-2011*. Retrieved (March 8, 2013), from <http://www.fbi.gov/about-us/cjis/ucr/ucr-publications#Crime>. Average of 3 years of data was used to determine rate per 100,000. Data for Baton Rouge was partial. The Baton Rouge Police Department only reported the first six months of the year and thus was not included in the FBI reports for 2010.

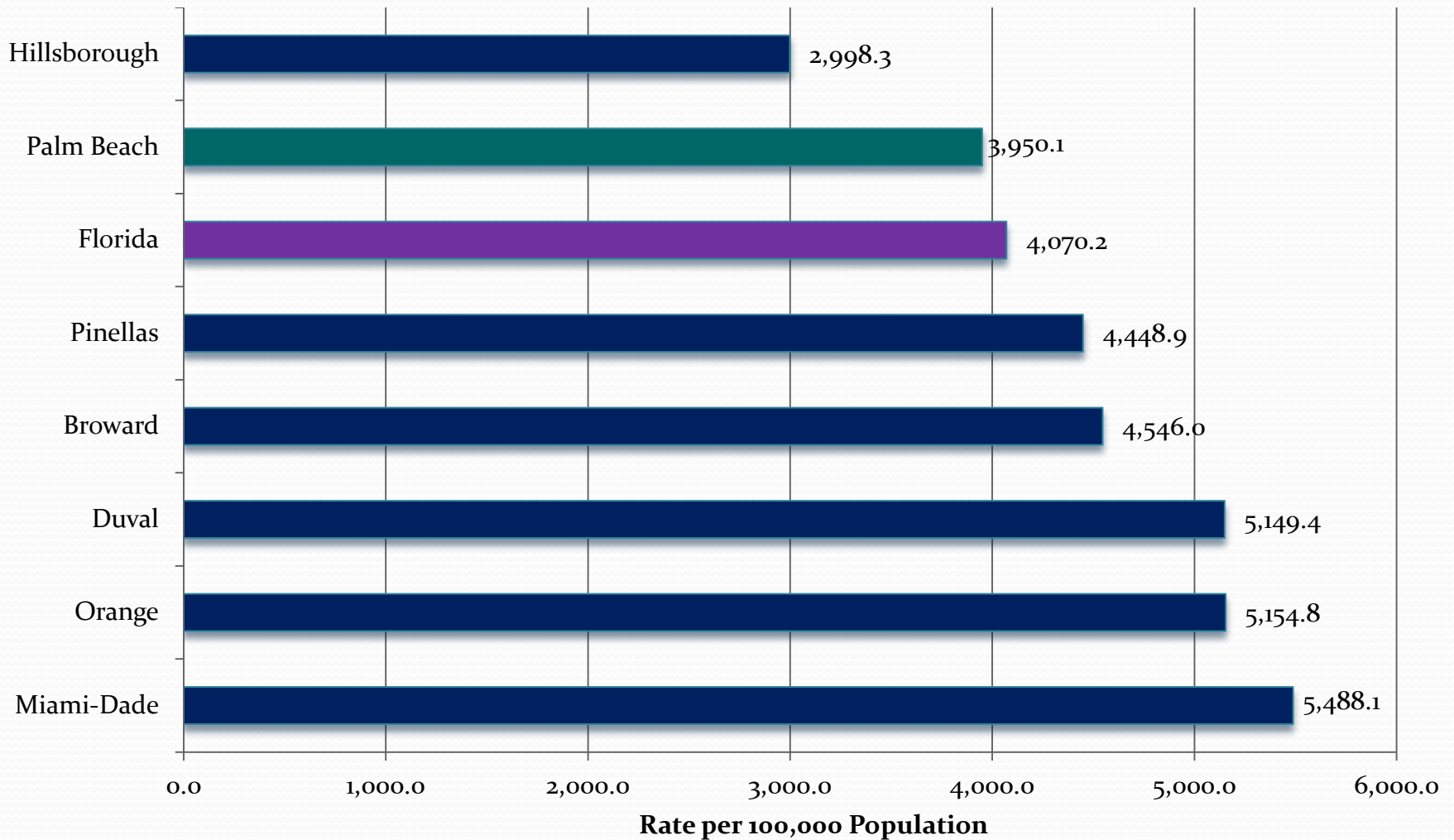
Population for Palm Beach County & Comparable Counties, 2011



Source: Florida Department of Law Enforcement. Crime in Florida, Florida Uniform Crime Report, 2011 [Computer program]. Tallahassee, FL : FDLE. Florida Statistical Analysis Center.

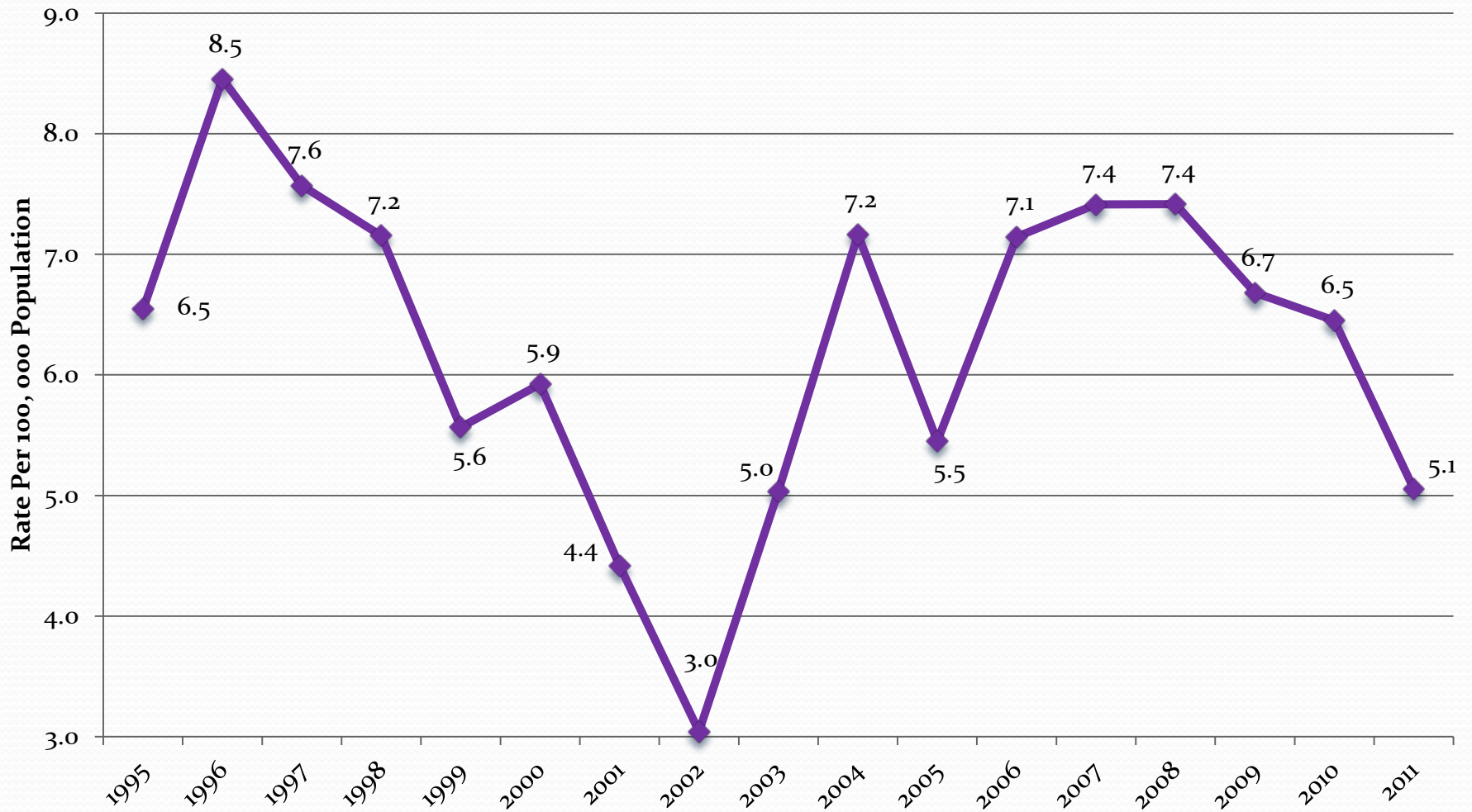
Florida population 18,905,048

Index Offense Rate in Palm Beach County & Comparable Counties, 2011



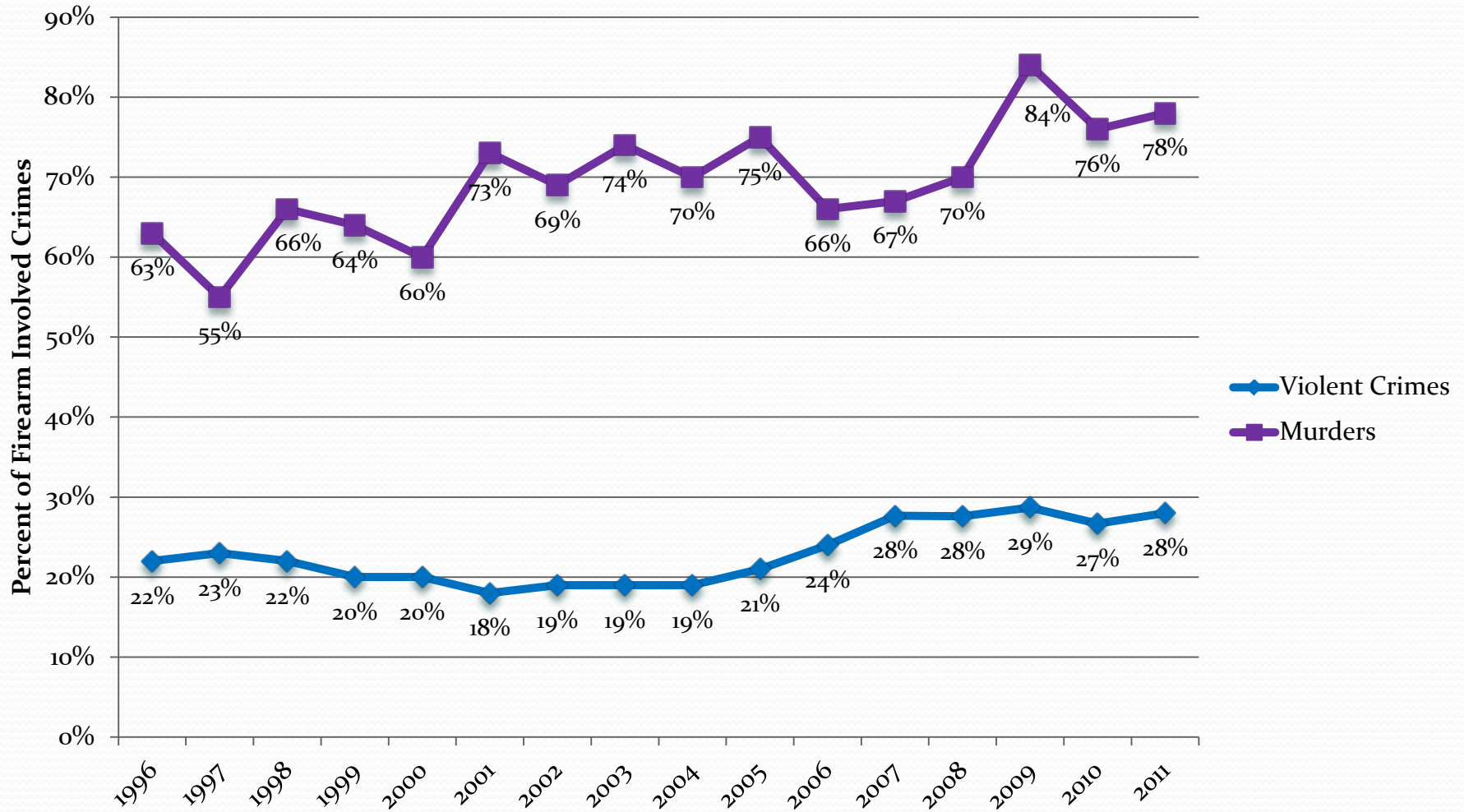
For Part I crimes only, categorized as violent crimes (murder, rape, robbery, aggravated assault) and non-violent/property crimes (burglary, larceny, motor vehicle theft). Source: Florida Department of Law Enforcement. Crime in Florida, Florida Uniform Crime Report, 2011 [Computer program]. Tallahassee, FL : FDLE. Florida Statistical Analysis Center.

Murder Index (Part I) Offense Rate in Palm Beach County, 1995-2011



Source: Florida Department of Law Enforcement. Crime in Florida, Florida Uniform Crime Report, 1995-2011 [Computer program]. Tallahassee, FL : FDLE. Florida Statistical Analysis Center.

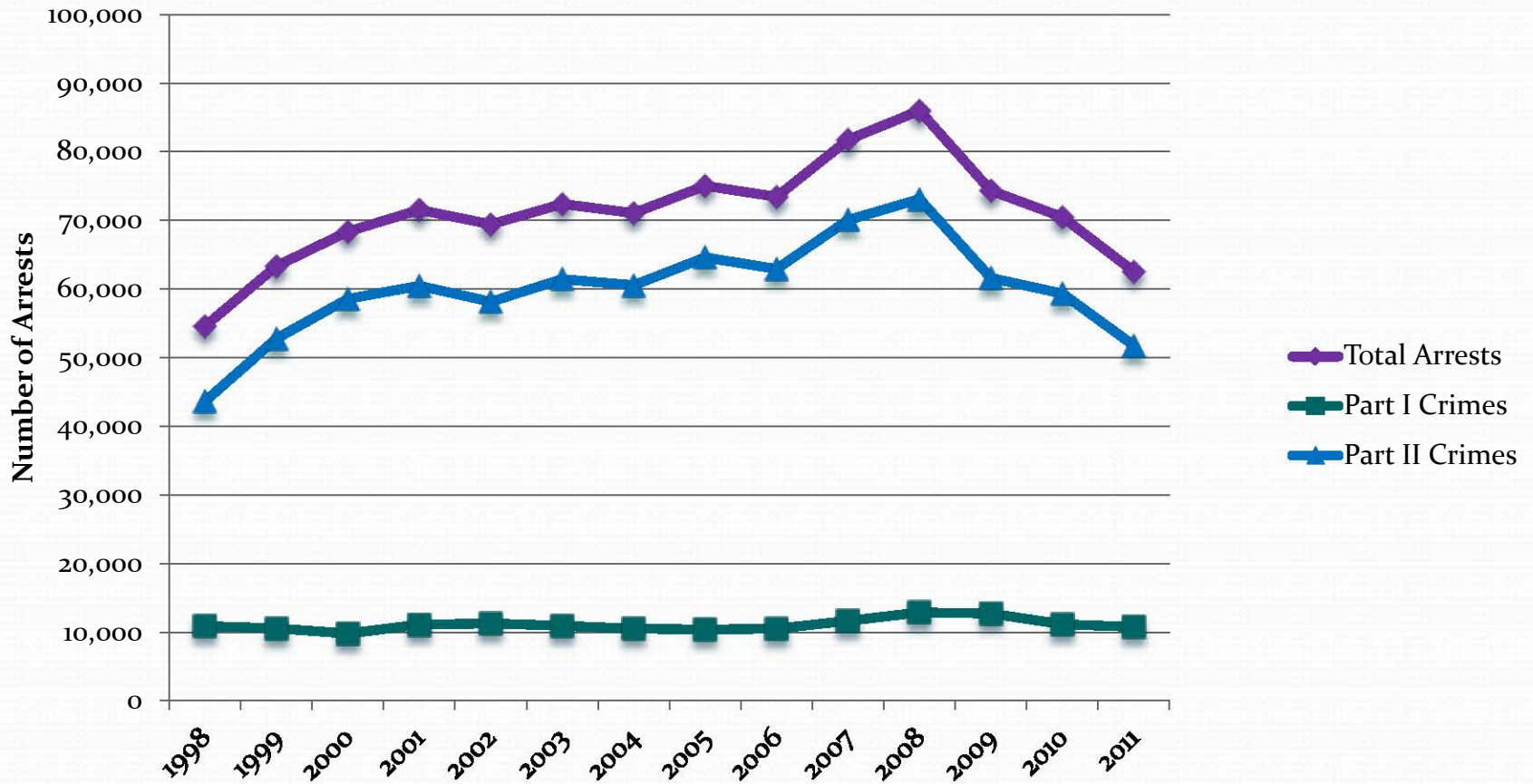
Firearm Use in Murder and Violent Crime Offenses in Palm Beach County, 1996-2011



Notes: Violent Crimes Total includes Murder, Forcible Sex Offenses, Robbery, Aggravated Assault, and Manslaughter.

Source: Florida Department of Law Enforcement. Crime in Florida, Florida Uniform Crime Report, 1996-2011 [Computer program]. Tallahassee, FL : FDLE. Florida Statistical Analysis Center.

Arrests in Palm Beach County, 1998-2011

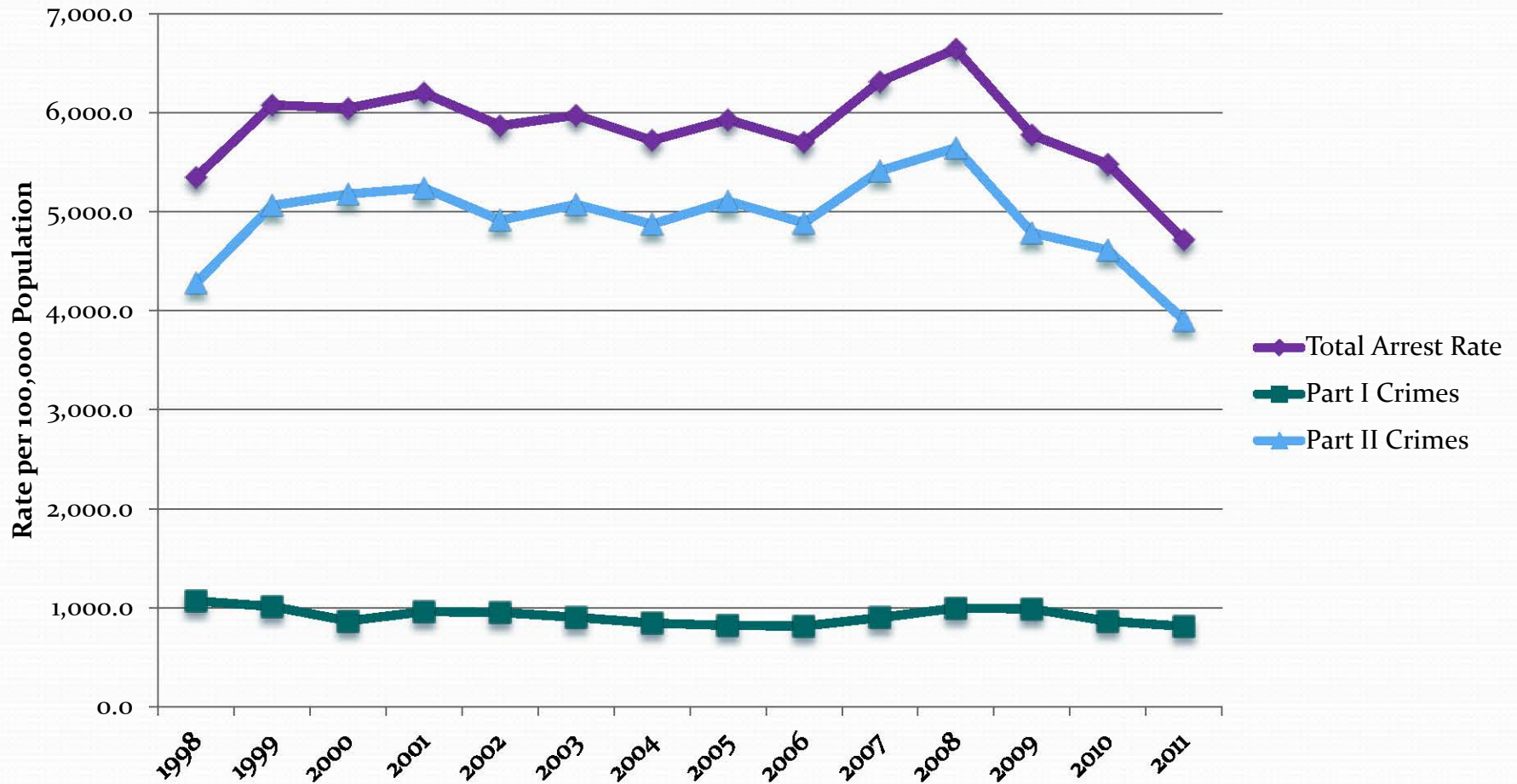


Arrests: For Part I crimes (murder, rape, robbery, aggravated assault, burglary, larceny, motor vehicle theft) and Part II crimes (manslaughter, kidnapping/abduction, arson, simple assault, drug arrest, bribery, embezzlement, fraud, counterfeit/forgery, extortion/blackmail, intimidation, prostitution, non-forcible sex, stolen property, dui, destruction/vandalism, gambling, weapons violations, liquor law violations, miscellaneous).

Source: Florida Department of Law Enforcement. Crime in Florida, Florida Uniform Crime Report, 1998-2011 [Computer program]. Tallahassee, FL : FDLE. Florida Statistical Analysis Center.

Includes corrections for FHP and PBSO data

Arrest Rate in Palm Beach County, 1998-2011

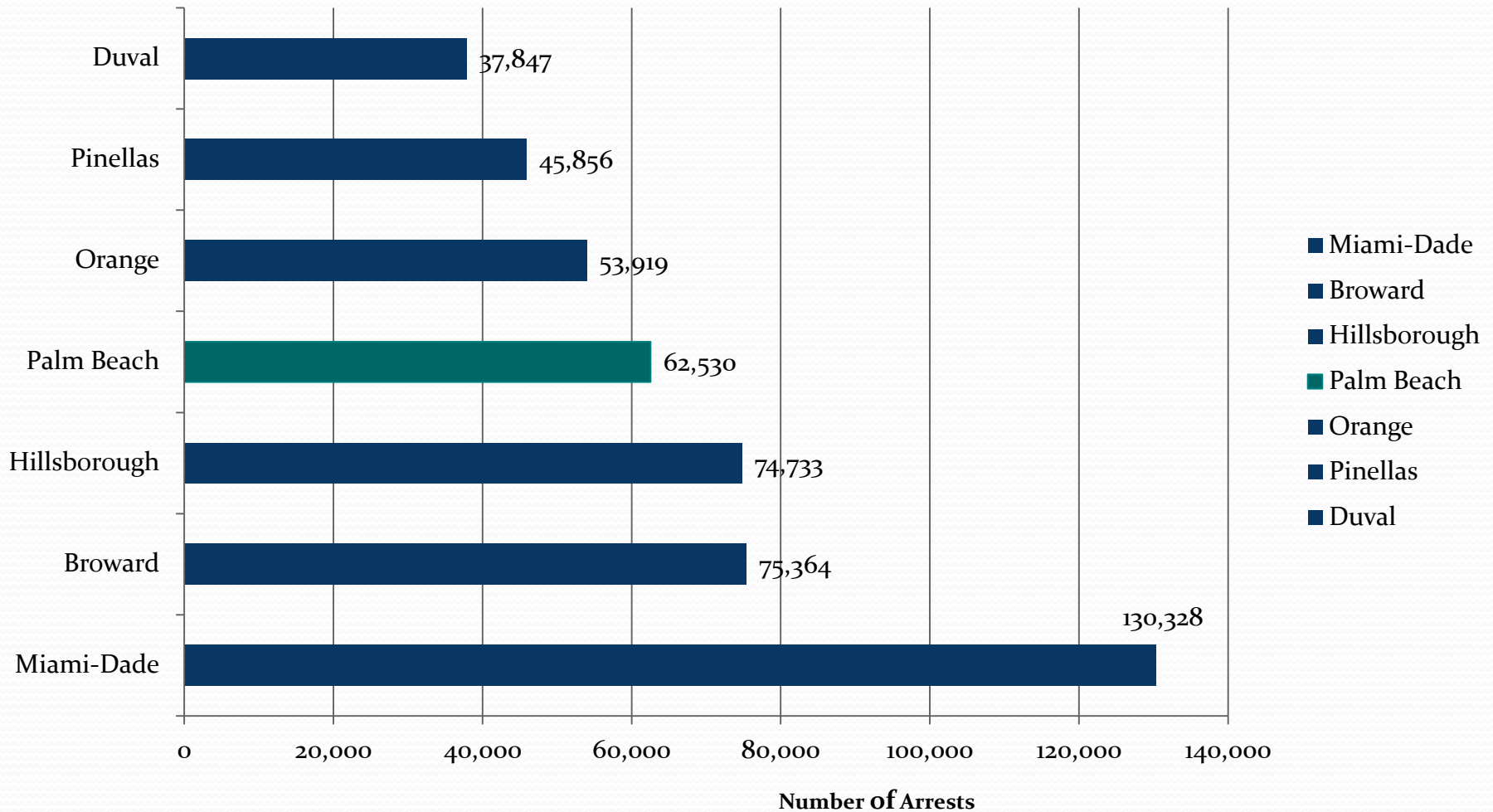


Arrests: For Part I crimes (murder, rape, robbery, aggravated assault, burglary, larceny, motor vehicle theft) and Part II crimes (manslaughter, kidnapping/abduction, arson, simple assault, drug arrest, bribery, embezzlement, fraud, counterfeit/forgery, extortion/blackmail, intimidation, prostitution, non-forcible sex, stolen property, dui, destruction/vandalism, gambling, weapons violations, liquor law violations, miscellaneous).

Source: Florida Department of Law Enforcement. Crime in Florida, Florida Uniform Crime Report, 1998-2011 [Computer program]. Tallahassee, FL : FDLE. Florida Statistical Analysis Center.

Includes corrections for FHP and PBSO data

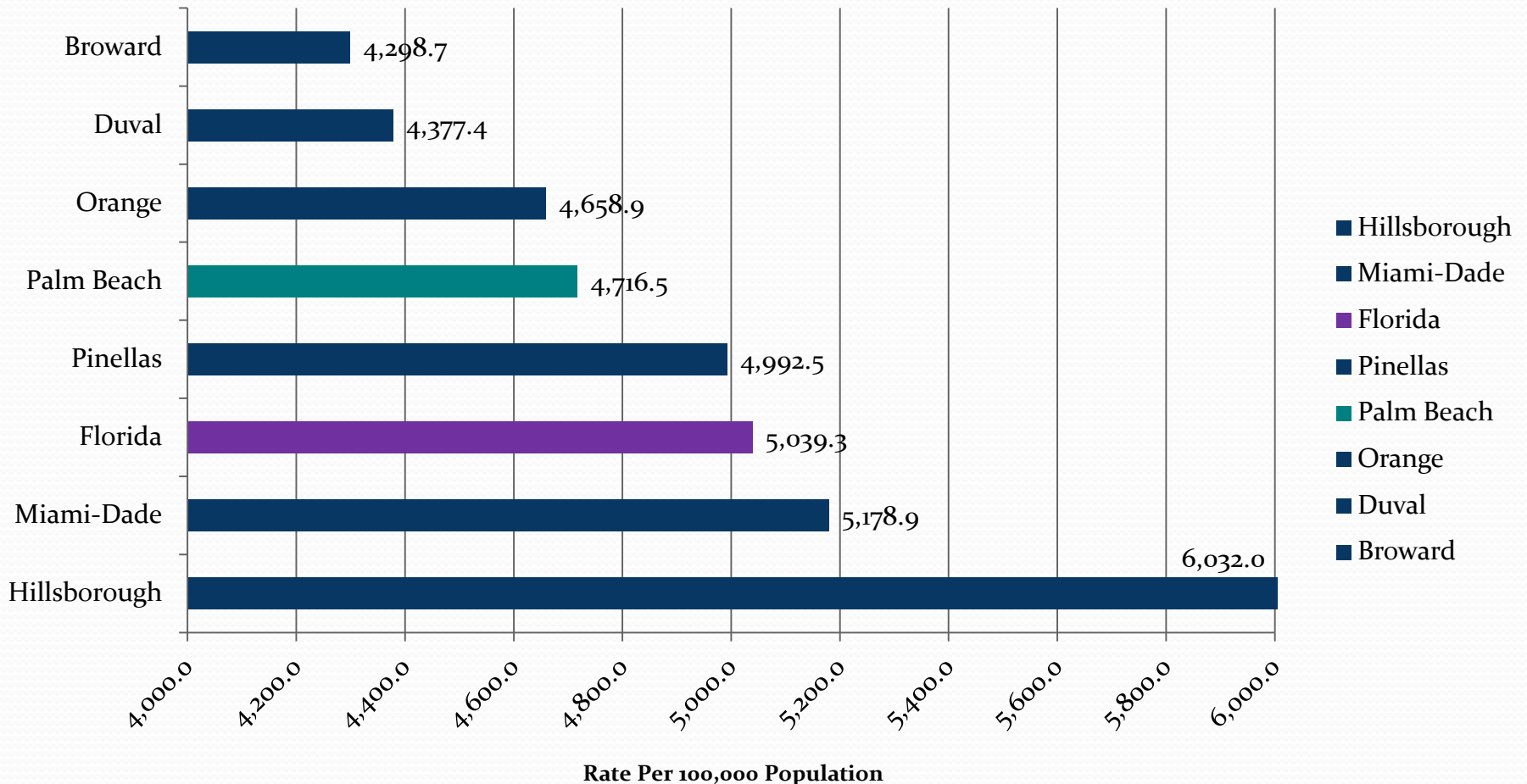
Arrests in Palm Beach & Comparable Counties, 2011



Arrests: For Part I crimes (murder, rape, robbery, aggravated assault, burglary, larceny, motor vehicle theft) and Part II crimes (manslaughter, kidnapping/abduction, arson, simple assault, drug arrest, bribery, embezzlement, fraud, counterfeit/forgery, extortion/blackmail, intimidation, prostitution, non-forcible sex, stolen property, dui, destruction/vandalism, gambling, weapons violations, liquor law violations, miscellaneous).

Source: Florida Department of Law Enforcement. Crime in Florida, Florida Uniform Crime Report, 2011 [Computer program]. Tallahassee, FL : FDLE. Florida Statistical Analysis Center.

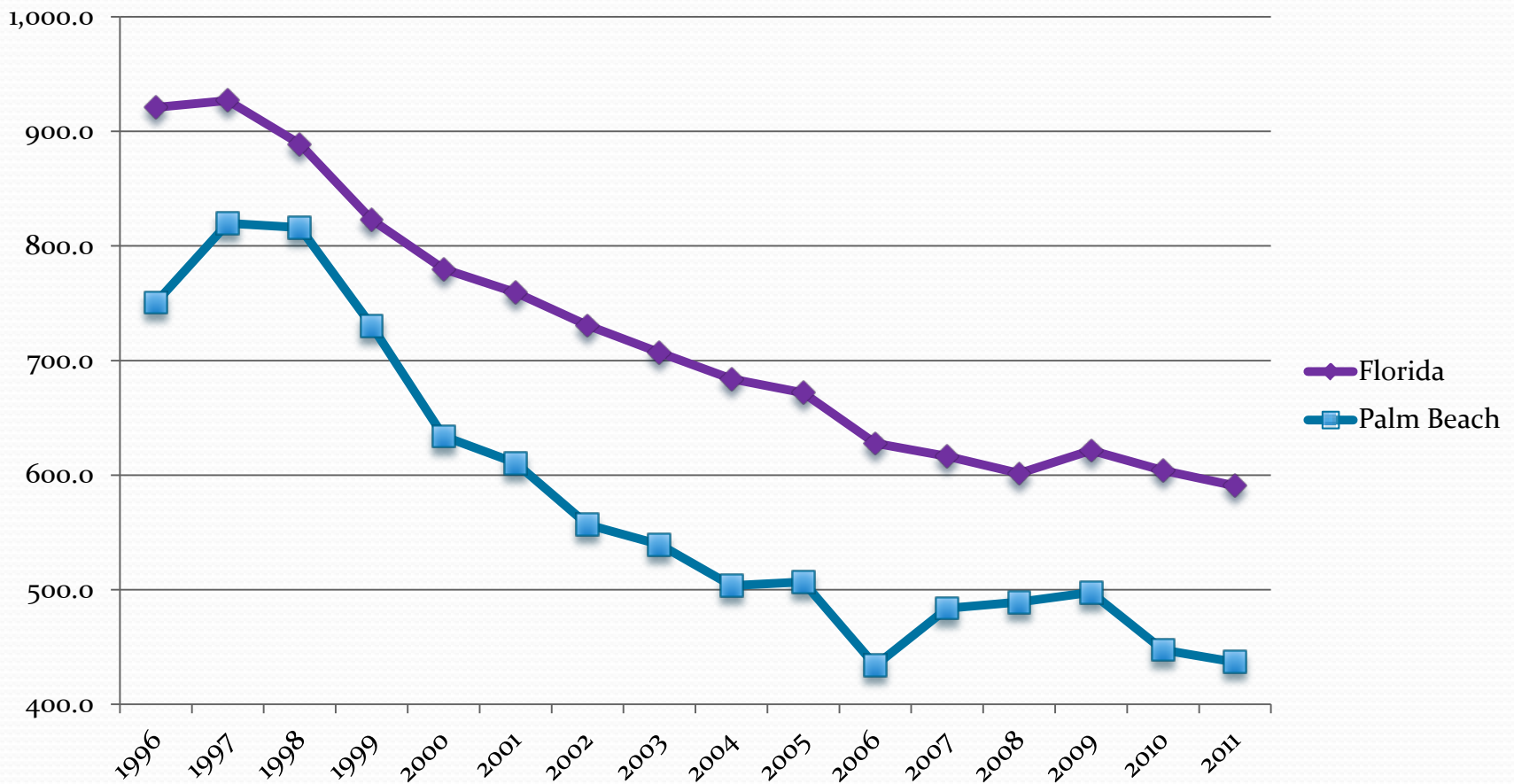
Arrest Rate in Palm Beach, Comparable Counties & State of Florida, 2011



Arrests: For Part I crimes (murder, rape, robbery, aggravated assault, burglary, larceny, motor vehicle theft) and Part II crimes (manslaughter, kidnaping/abduction, arson, simple assault, drug arrest, bribery, embezzlement, fraud, counterfeit/forgery, extortion/blackmail, intimidation, prostitution, non-forcible sex, stolen property, dui, destruction/vandalism, gambling, weapons violations, liquor law violations, miscellaneous).

Source: Florida Department of Law Enforcement. Crime in Florida, Florida Uniform Crime Report, 2011 [Computer program]. Tallahassee, FL : FDLE. Florida Statistical Analysis Center.

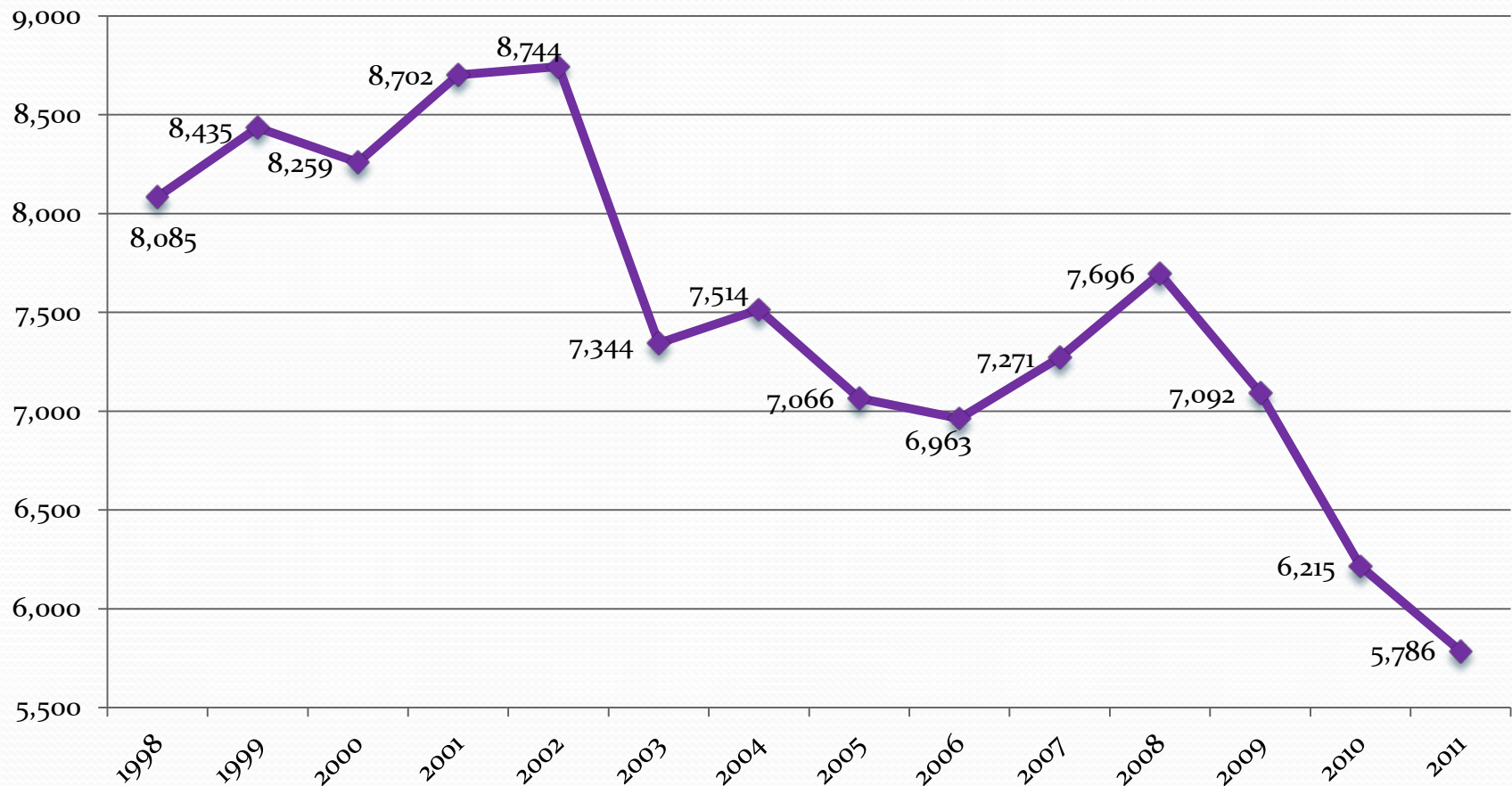
Comparison of Domestic Violence Offense Rates in Palm Beach County and Florida, 1996-2011



Rate per 100,000 Population for Domestic Violence Offenses (murder, manslaughter, forcible rape, forcible manslaughter, forcible fondling, aggravated assault, aggravated stalking, simple assault, threat/intimidation, stalking)

Source: Florida Department of Law Enforcement. Crime in Florida, Florida Uniform Crime Report, 1996-2011 [Computer program]. Tallahassee, FL : FDLE. Florida Statistical Analysis Center.

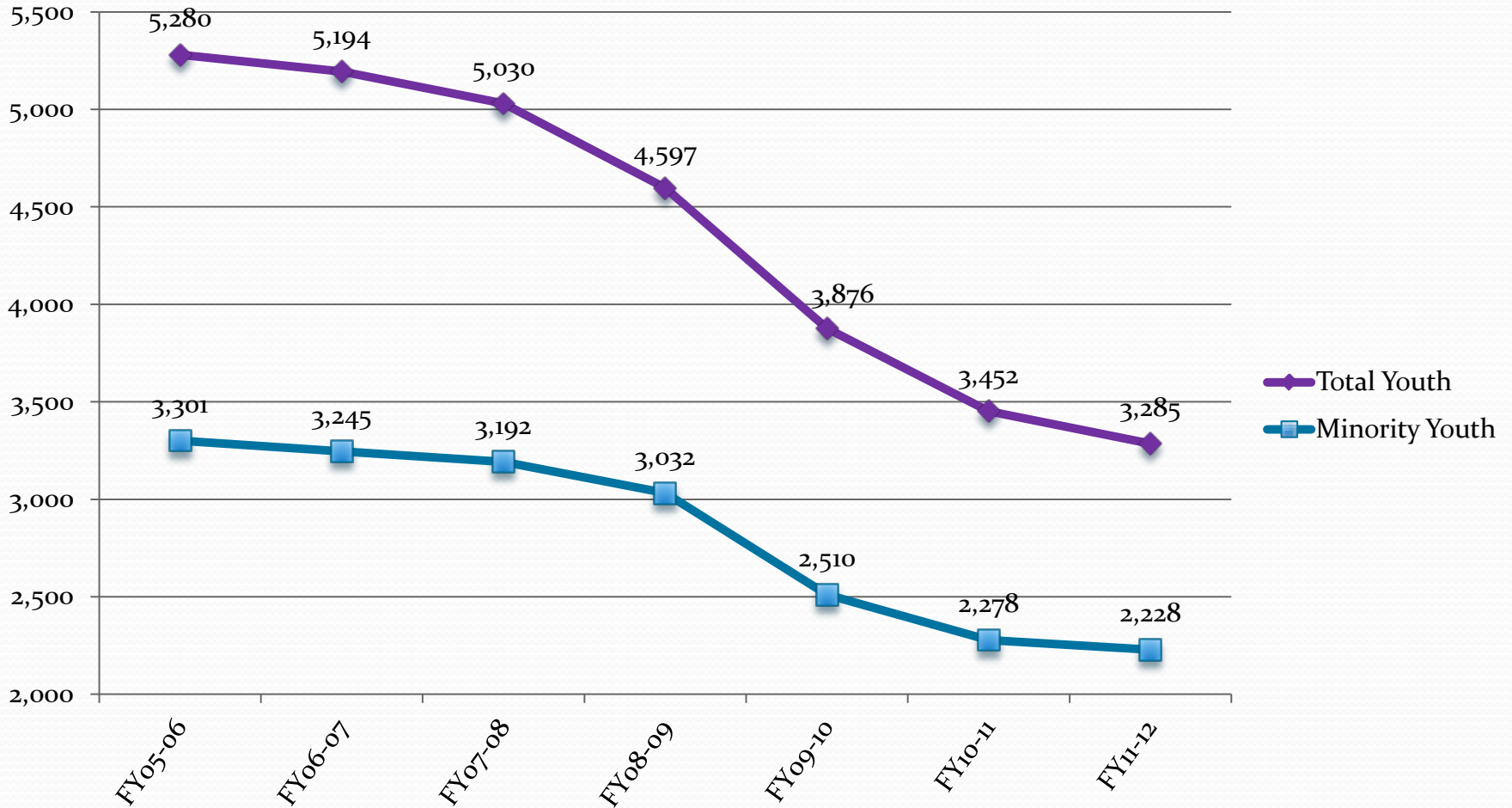
Palm Beach County Juvenile Arrest (Part I & II) Trends, 1998-2011



NOTE: 1998-2002 Recalculated with Revised PBSO Misc. data. and 2006 FHP data that was double reported

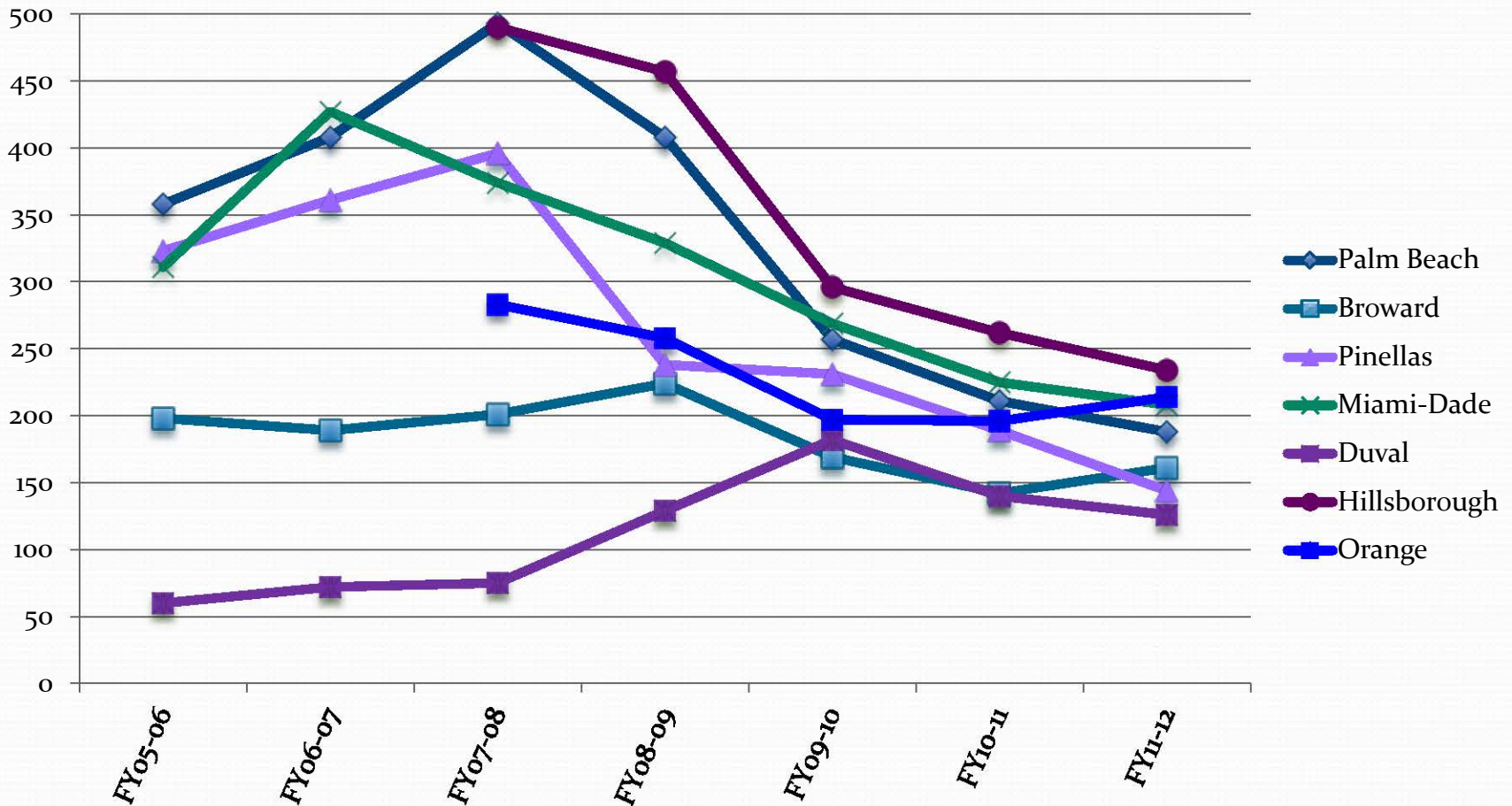
Source: Florida Department of Law Enforcement. Crime in Florida, Florida Uniform Crime Report, 1998- 2011 [Computer program]. Tallahassee, FL : FDLE. Florida Statistical Analysis Center.

Palm Beach County Referrals to Department of Juvenile Justice, 2005-2012



Data Sources: Delinquency Profiles, Department of Juvenile Justice.
Minority Youth- youth in DJJ who are categorized by race as being *Black, Hispanic* or *Other*

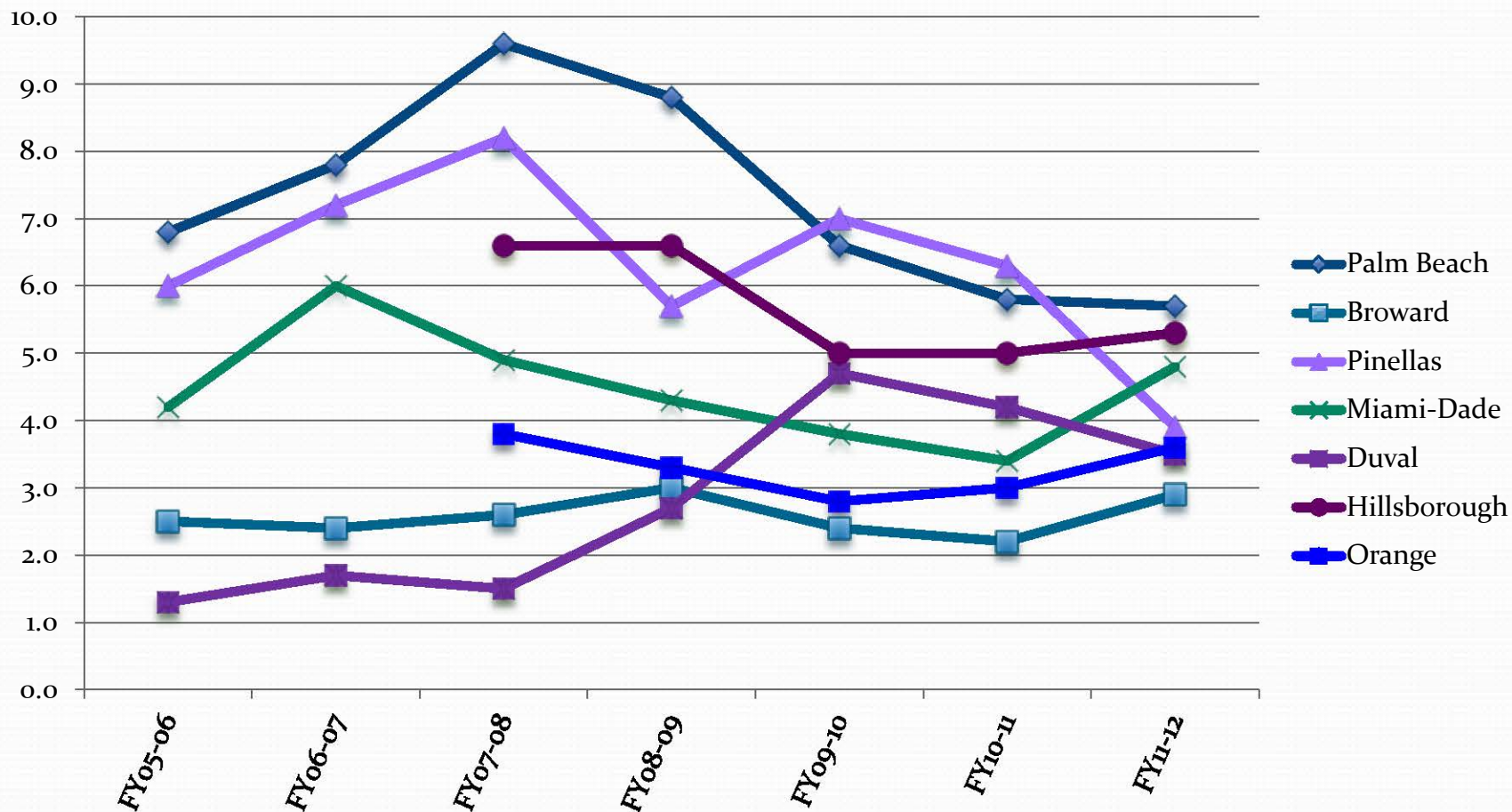
Number of Youth Direct Filed (Palm Beach County Compared with other Counties), 2005-2012



Data Source: Delinquency Profiles, Department of Juvenile Justice

Note: Data for Hillsborough and Orange County for 2005-2007 is currently not available in Delinquency Profiles, DJJ.

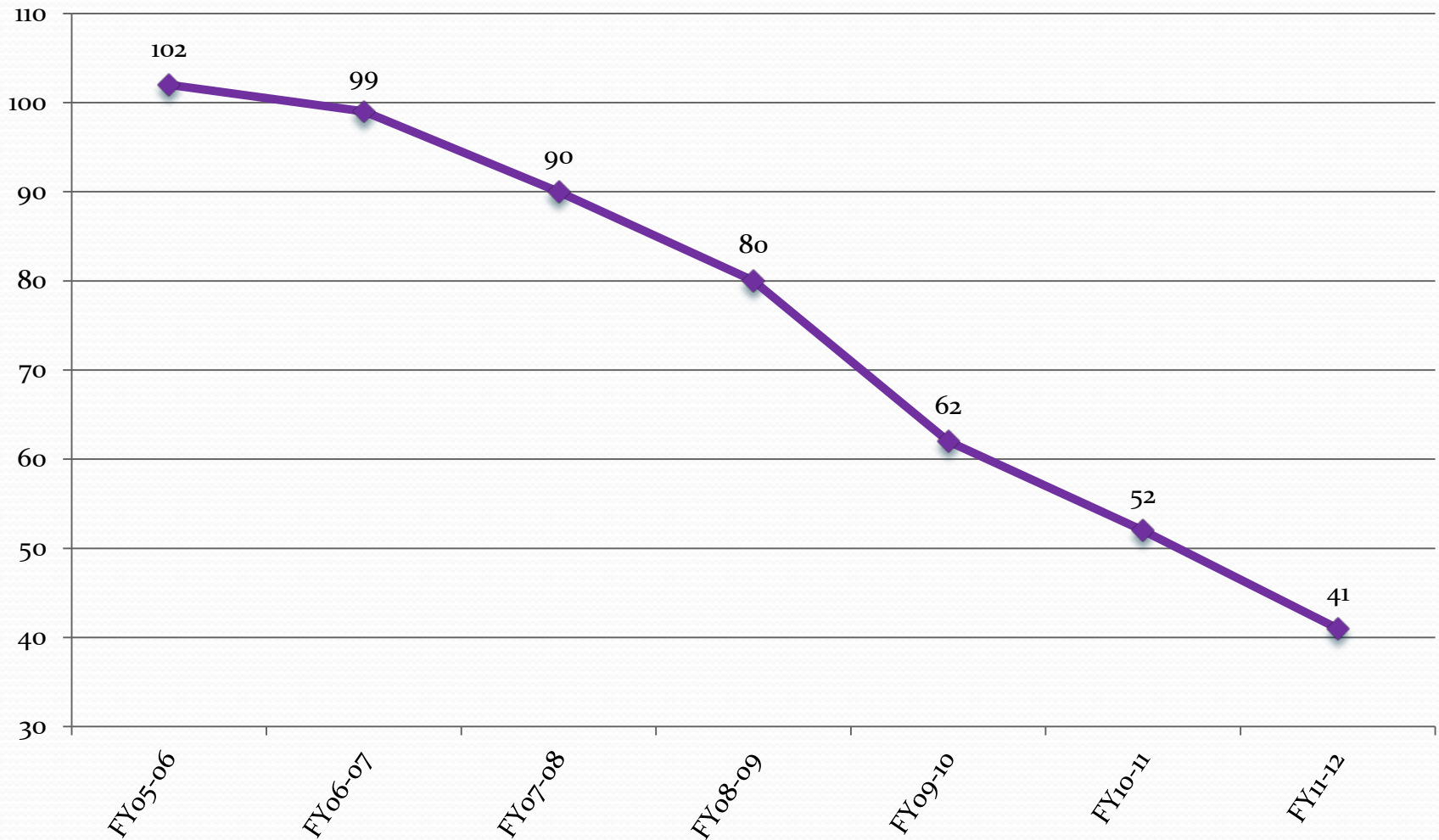
Ratio of Youth Direct Filed (Palm Beach County Compared with other Counties), 2005-2012



Data Source: Delinquency Profiles, Department of Juvenile Justice

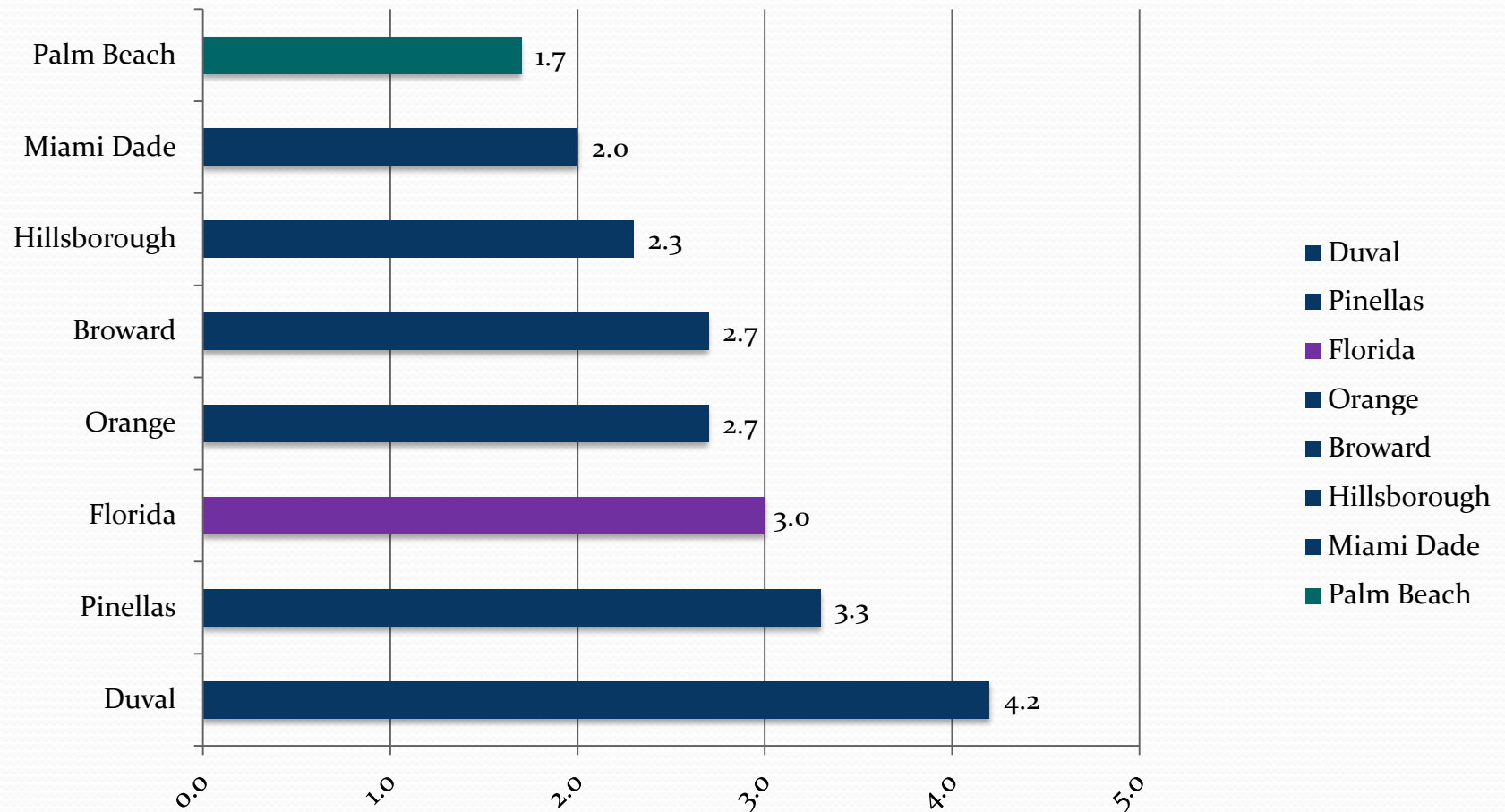
Note: Data for Hillsborough and Orange County for 2005-2007 not available in Delinquency Profiles, DJJ.

Palm Beach County Juvenile Detention Center Average Daily Population, 2005-2012



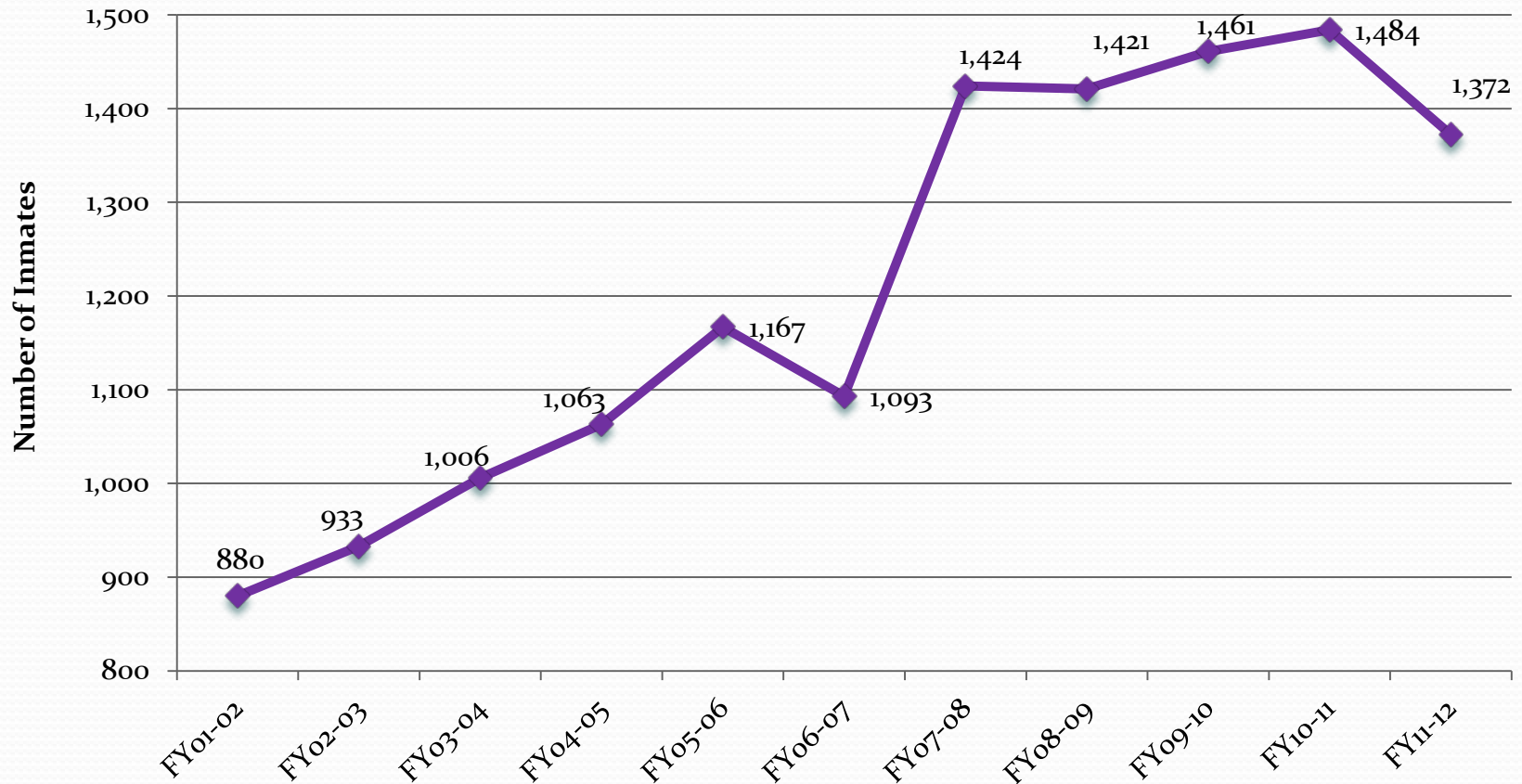
Data Source: Comprehensive Accountability Reports, Department of Juvenile Justice.

Incarceration Rate, Palm Beach & Comparable County Jails, 2012



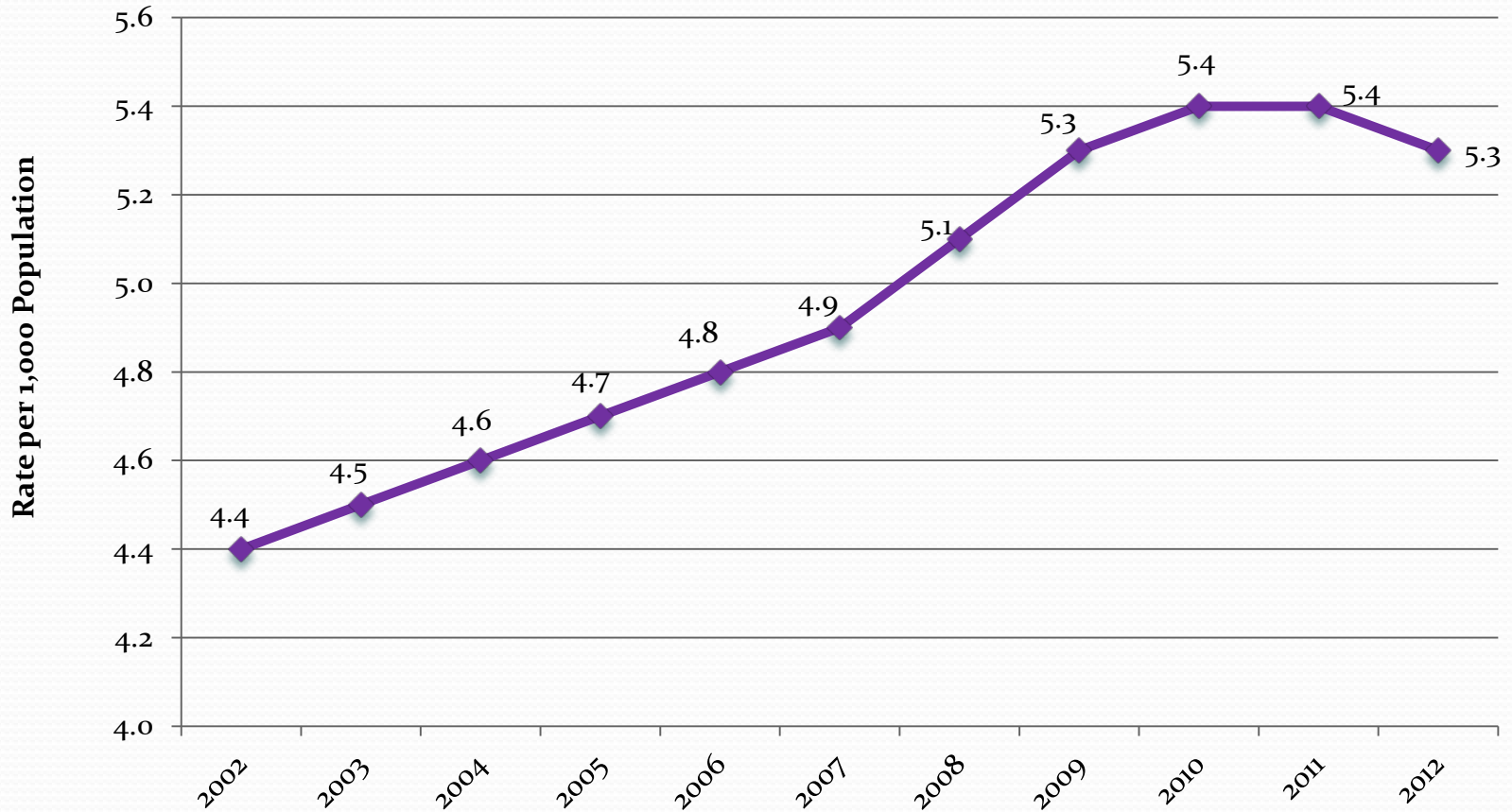
Source: Florida Department of Corrections, Florida County Detention Facilities Average Inmate Population 2012 Annual Population Report, Bureau of Research and Data Analysis, Tallahassee, FL.

Admissions to Florida State Prisons from Palm Beach County, 2001-2012



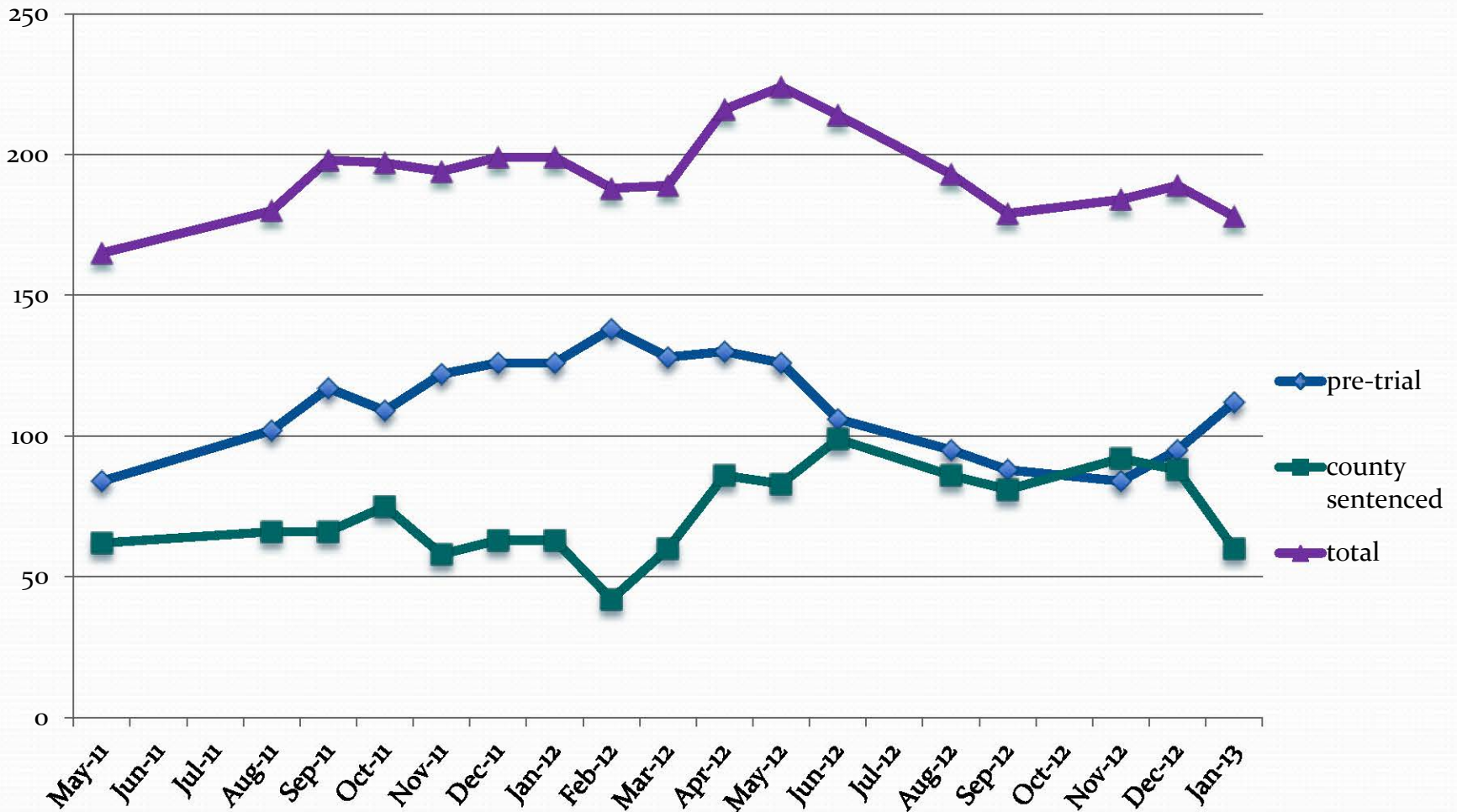
Source: Agency Statistics. Florida Department of Corrections, Bureau of Research and Data Analysis. Tallahassee, FL.

Incarceration Rate, Florida State Prisons, 2002-2012



Source: Agency Statistics. Florida Department of Corrections, Bureau of Research and Data Analysis. Tallahassee, FL.
Note: Inmate population as of June 30th of each year

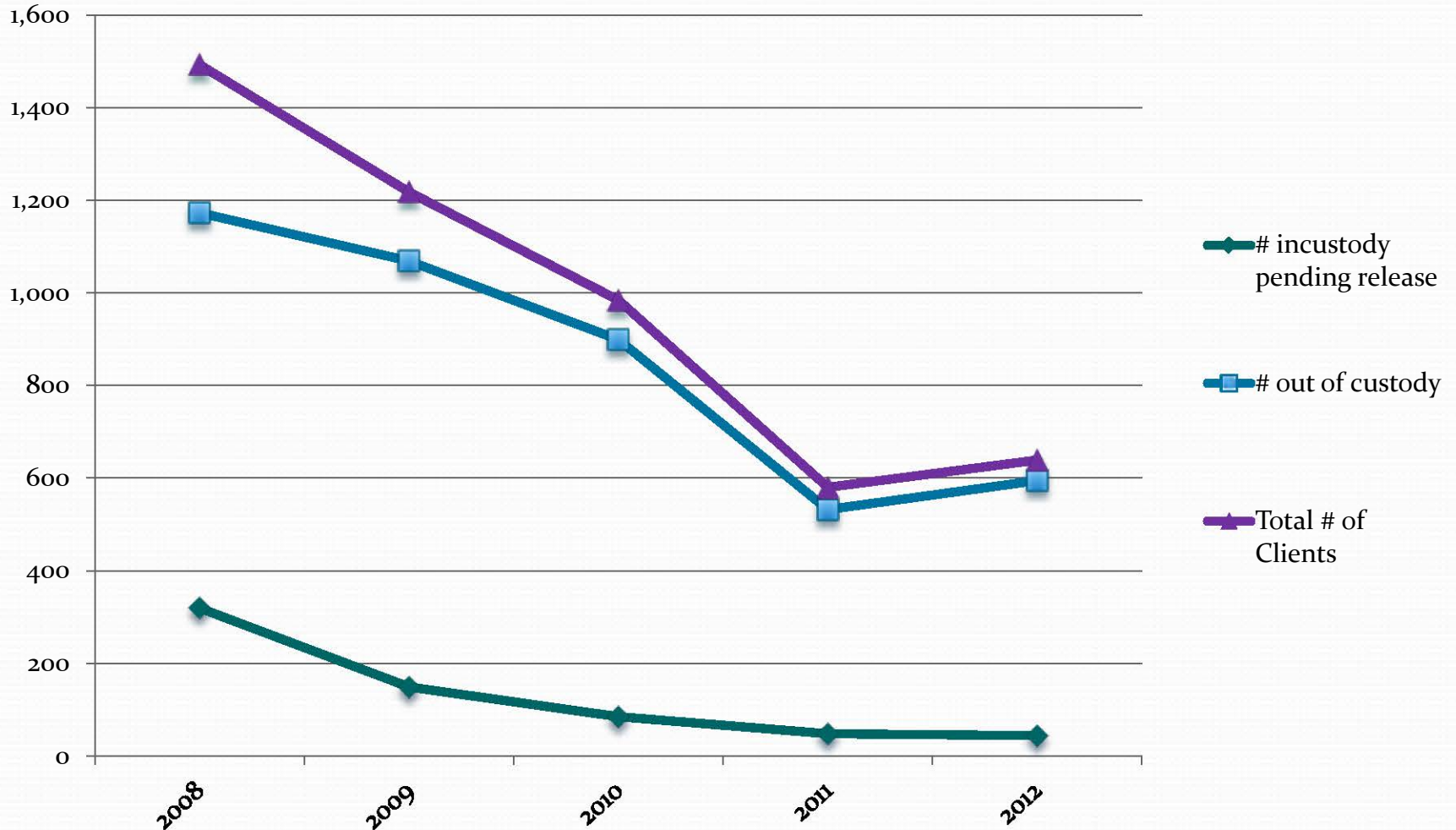
Palm Beach County In-House Arrest Monthly Population, May 2011 to January 2013



Data Source: Palm Beach County Sheriff's Office, monthly report to Corrections Task Force

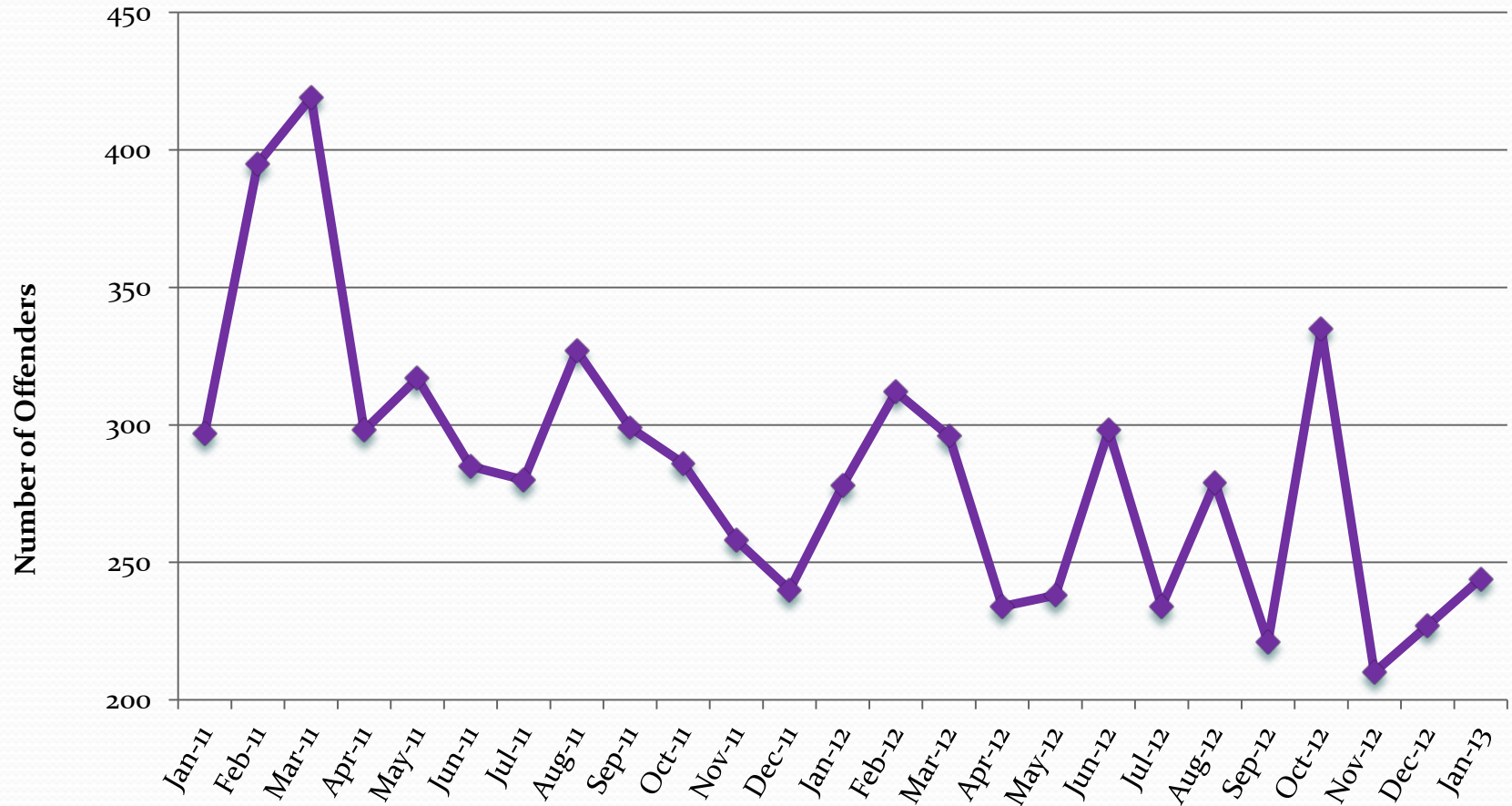
Missing Data: Jun-11, Jul-11, Jul-12, Oct-12

Palm Beach County Pre-Trial Services Program (End of Year Populations, 2008-2012)



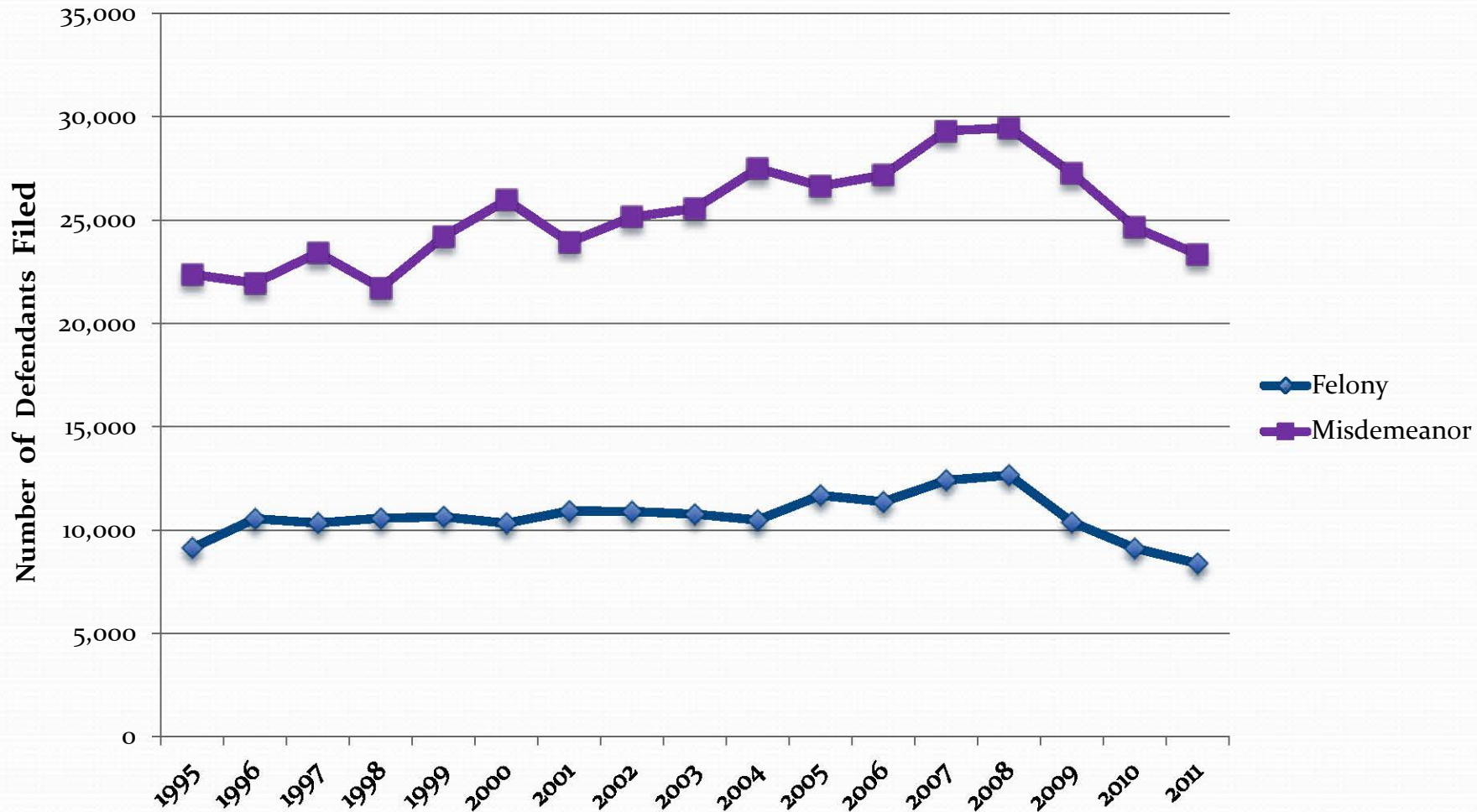
Data Source: PBC Justice Services, monthly report to Corrections Task Force

Palm Beach County Book and Release (Monthly Population , January 2011 to January 2013)



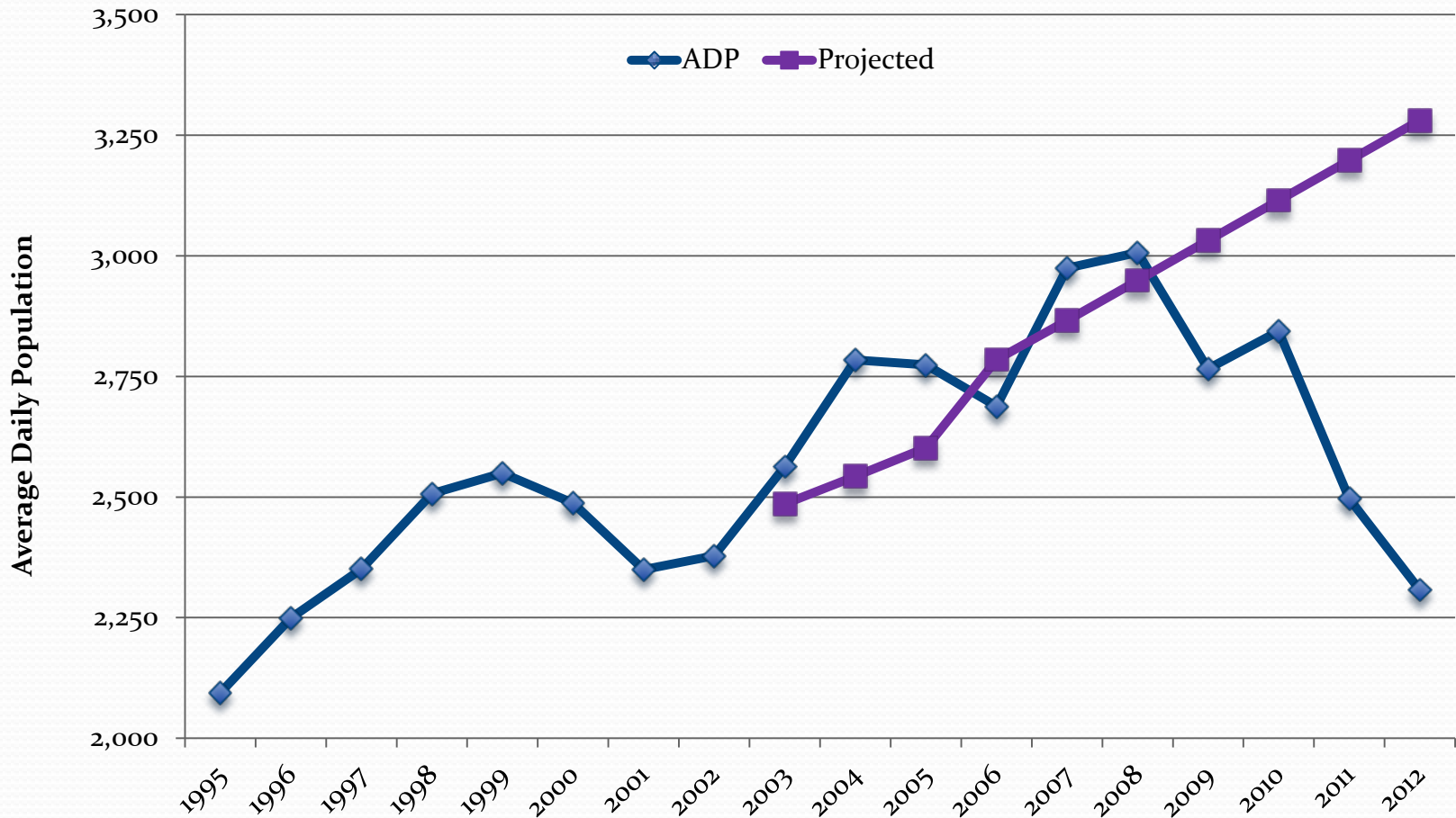
Data Source: Palm Beach County Sheriff's Office, monthly report to Corrections Task Force

Defendants Filed in Palm Beach County Courts, 1995-2011



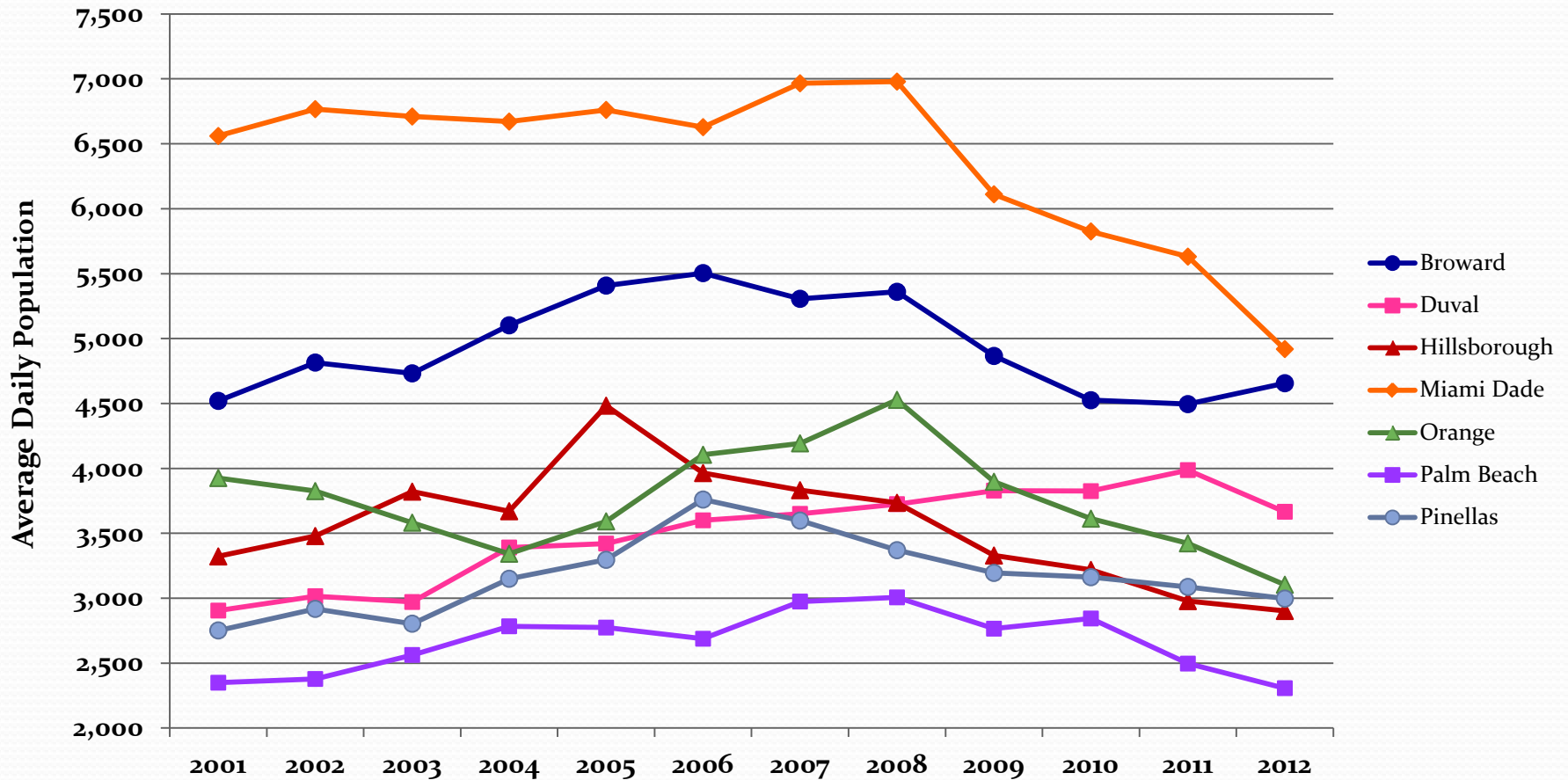
Source: Trial Court Statistics, Florida Office of the State Courts Administrator. Tallahassee, FL.

Average Daily Population, Palm Beach County Jails, 1995-2012



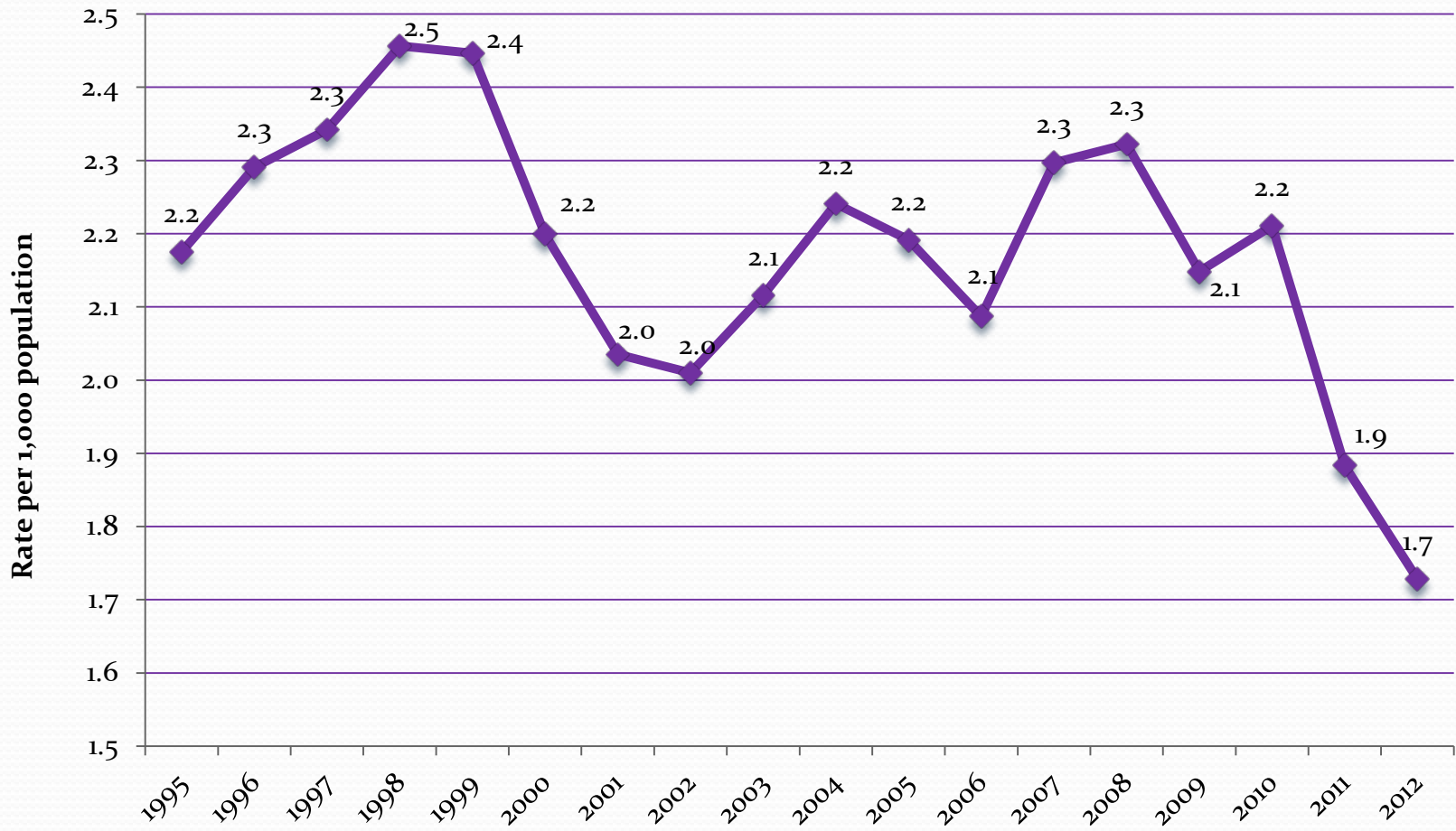
Source: Palm Beach County Sheriff's Office, Palm Beach County Correctional Facilities Monthly Population Report, 1995-2012 (ADP).
PBC Jail Expansion Program 2: Track Report - Final Report. Pulitzer/Bogard & Associates, LLC and Spillis Candela DMJM, December 16, 2005 (Projected ADP).

Average Daily Jail Population, Palm Beach and Comparable Counties, 2001-2012



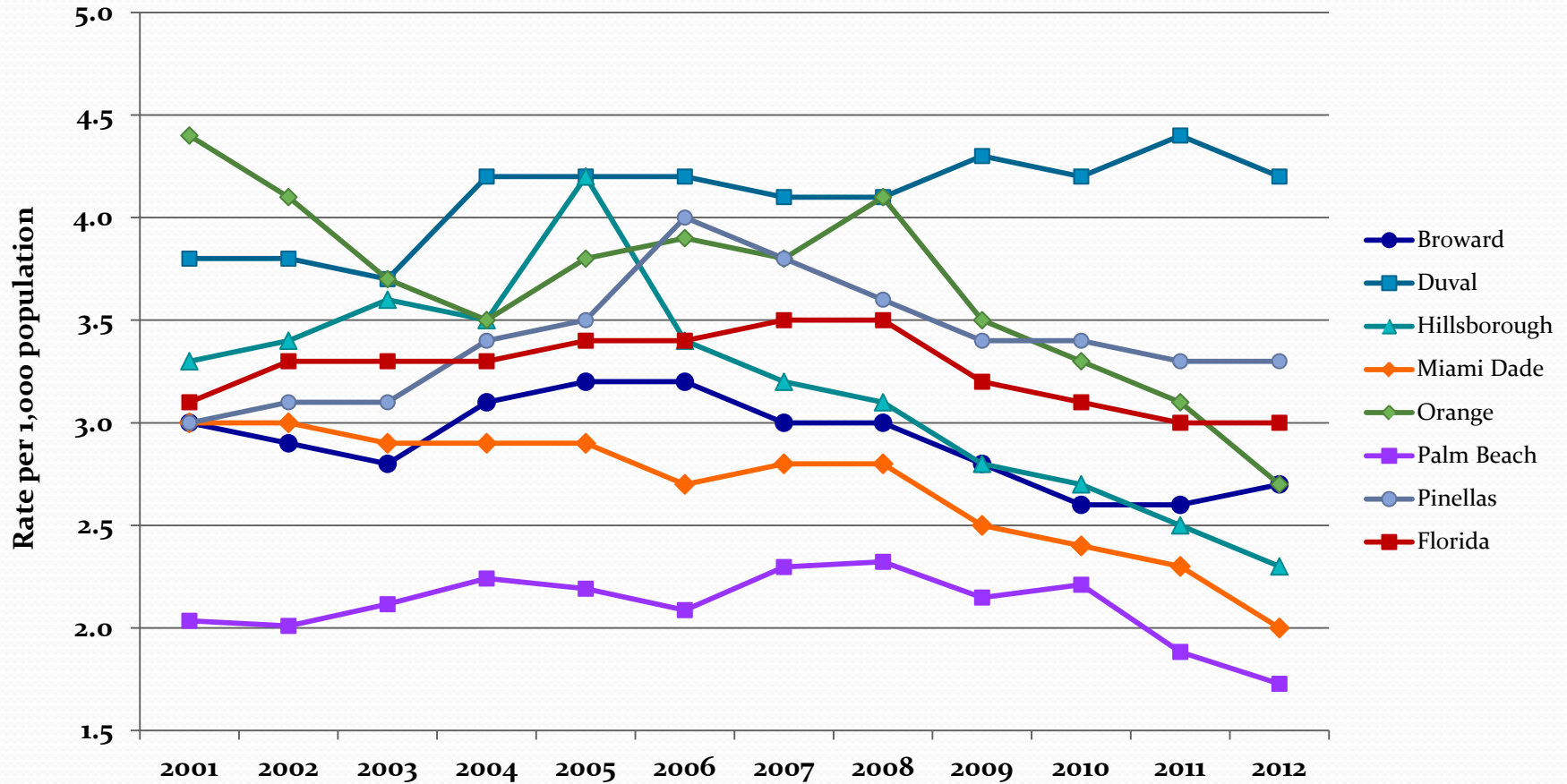
Data Sources: Florida County Detention Facilities Average Inmate Population Annual Reports, 2001-2012, Florida Department of Corrections, Bureau of Research and Data Analysis; and Palm Beach County Correctional Facilities Monthly Population Report, 2001-2012. Palm Beach County Sheriff's Office.

Incarceration Rate, Palm Beach County Jails, 1995-2012



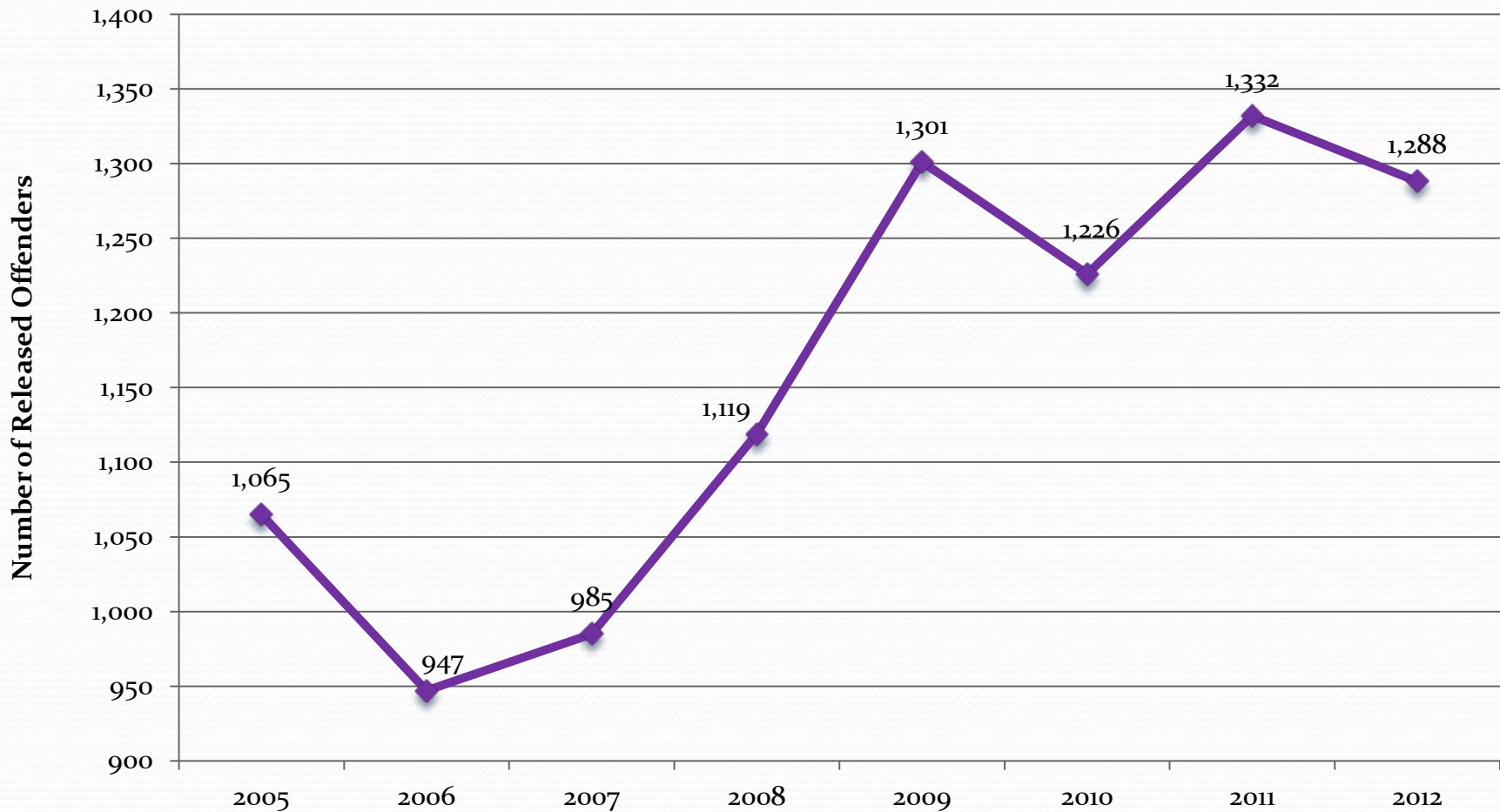
Source: Palm Beach County Sheriff's Office, Palm Beach County Correctional Facilities Monthly Population Report, 1995-2012.

Incarceration Rate, Palm Beach County Jails and Comparable Counties, 1995-2012



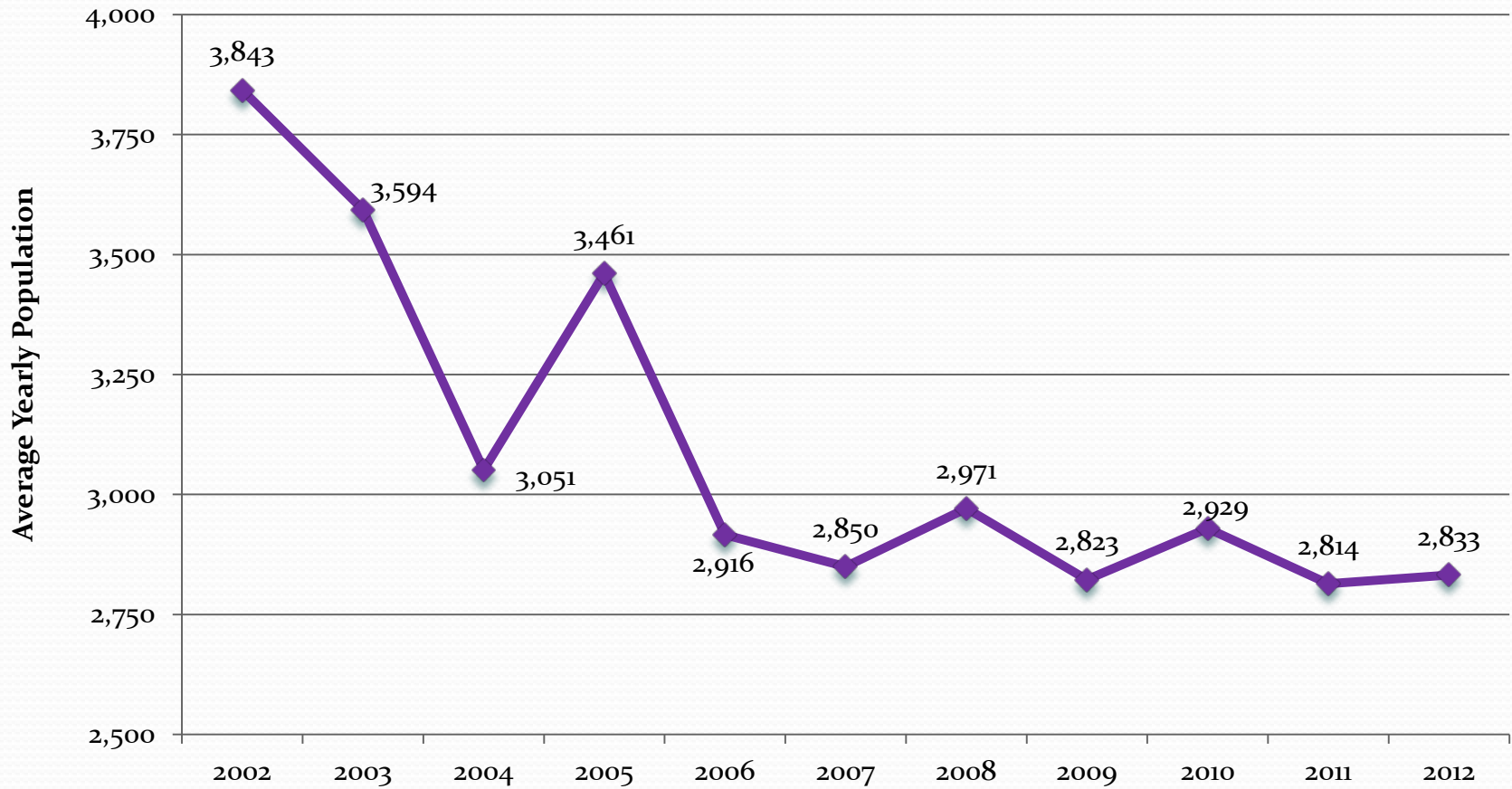
Data Sources: Florida County Detention Facilities Average Inmate Population Annual Reports, 2001-2012, Florida Department of Corrections, Bureau of Research and Data Analysis; and Palm Beach County Correctional Facilities Monthly Population Report, 2001-2012. Palm Beach County Sheriff's Office.

Released Offenders from Department of Corrections to Palm Beach County, 2005-2012



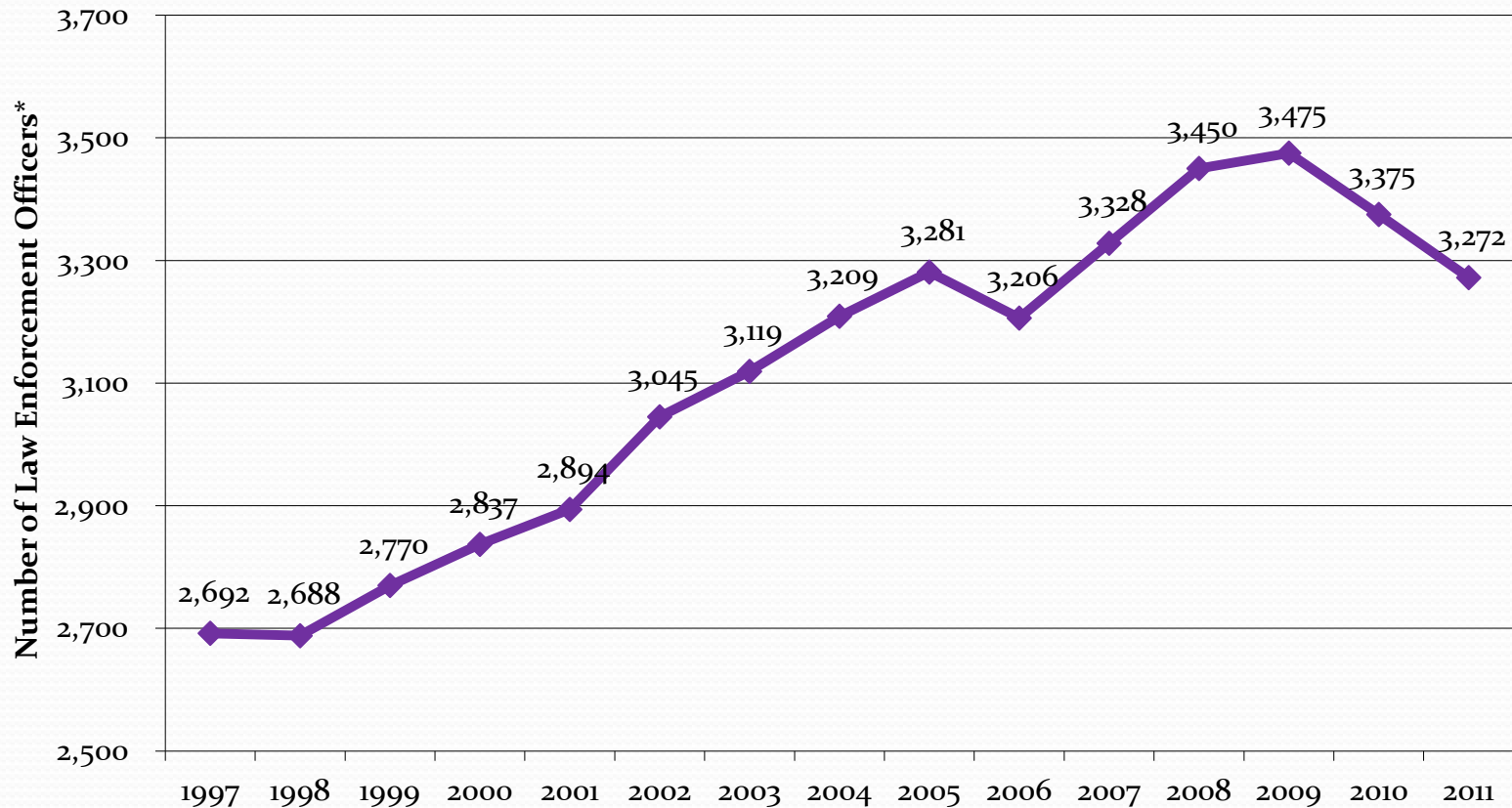
Source: Florida Department of Corrections, Bureau of Research and Data Analysis, County Release Reports, 2005-2012.

Misdemeanor Probation Population, Palm Beach County, 2002-2012



Data Source: Pride Integrated Services, Inc., Quarterly Reports, 2002-2012.

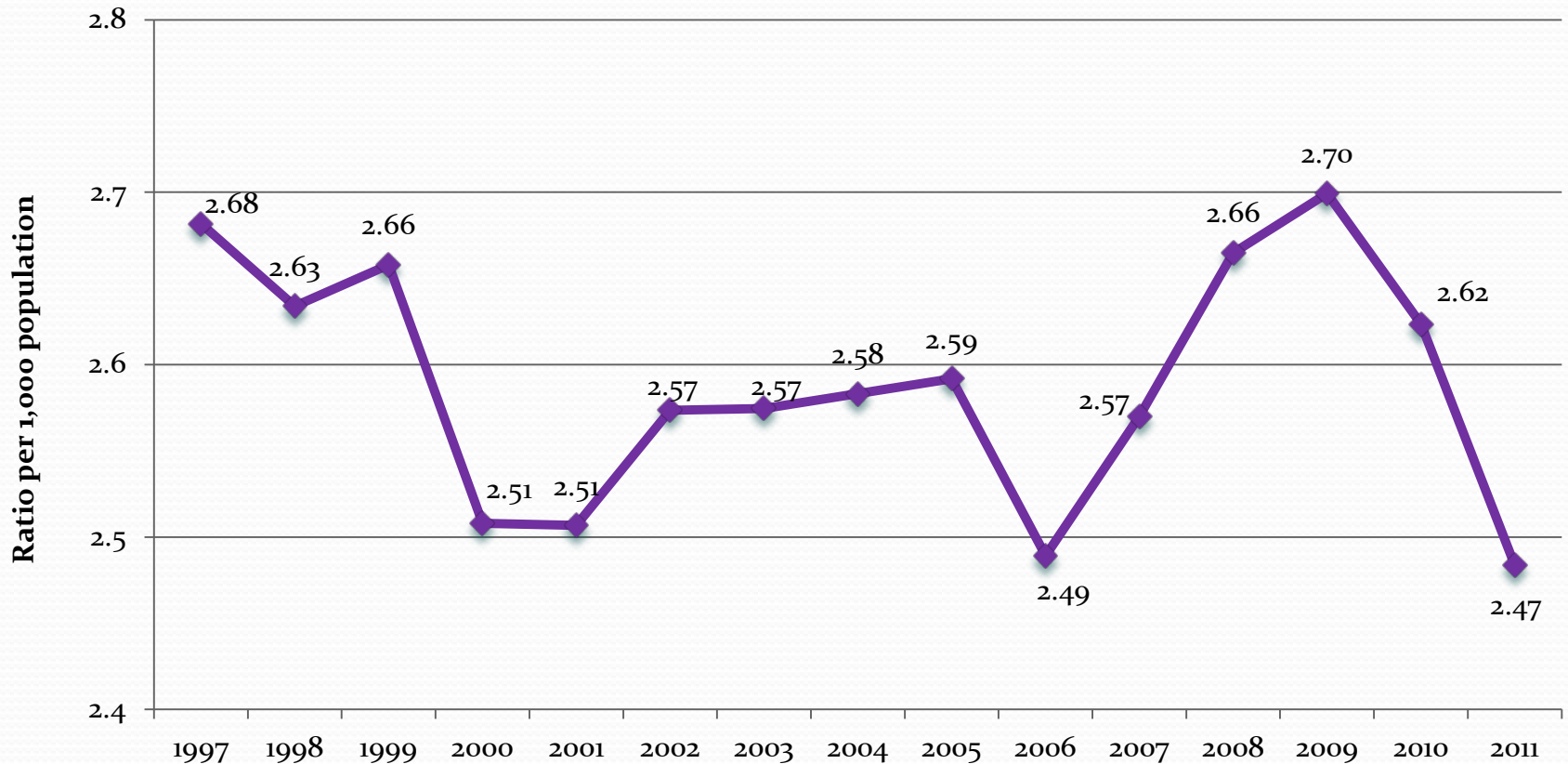
Law Enforcement Officers in Palm Beach County, 1997-2011



*Total count based on full-time officers as of 6/30 of the specified year (include Sworn, Concurrent, Schools and Ports, State Attorney-15th Circuit law enforcement officers).

Source: Florida Department of Law Enforcement, Criminal Agency Profile Report, 1997-2011, Tallahassee, FL.

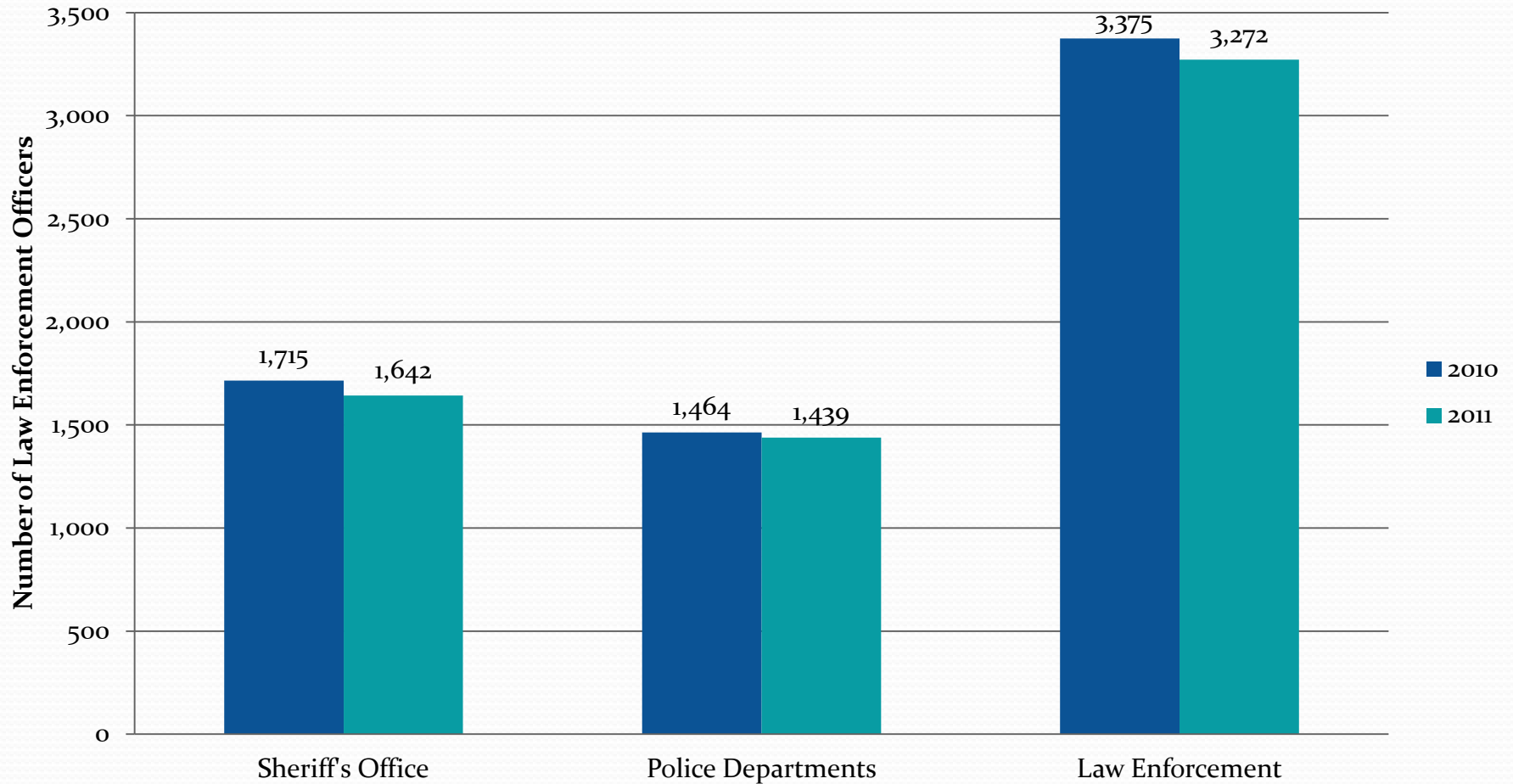
Ratio of Law Enforcement Officers in Palm Beach County, 1997-2011



*Total count based on full-time officers as of 6/30 of the specified year (include Sworn, Concurrent, Schools and Ports, State Attorney-15th Circuit law enforcement officers).

Source: Florida Department of Law Enforcement, Criminal Agency Profile Report, 1997-2011, Tallahassee, FL.

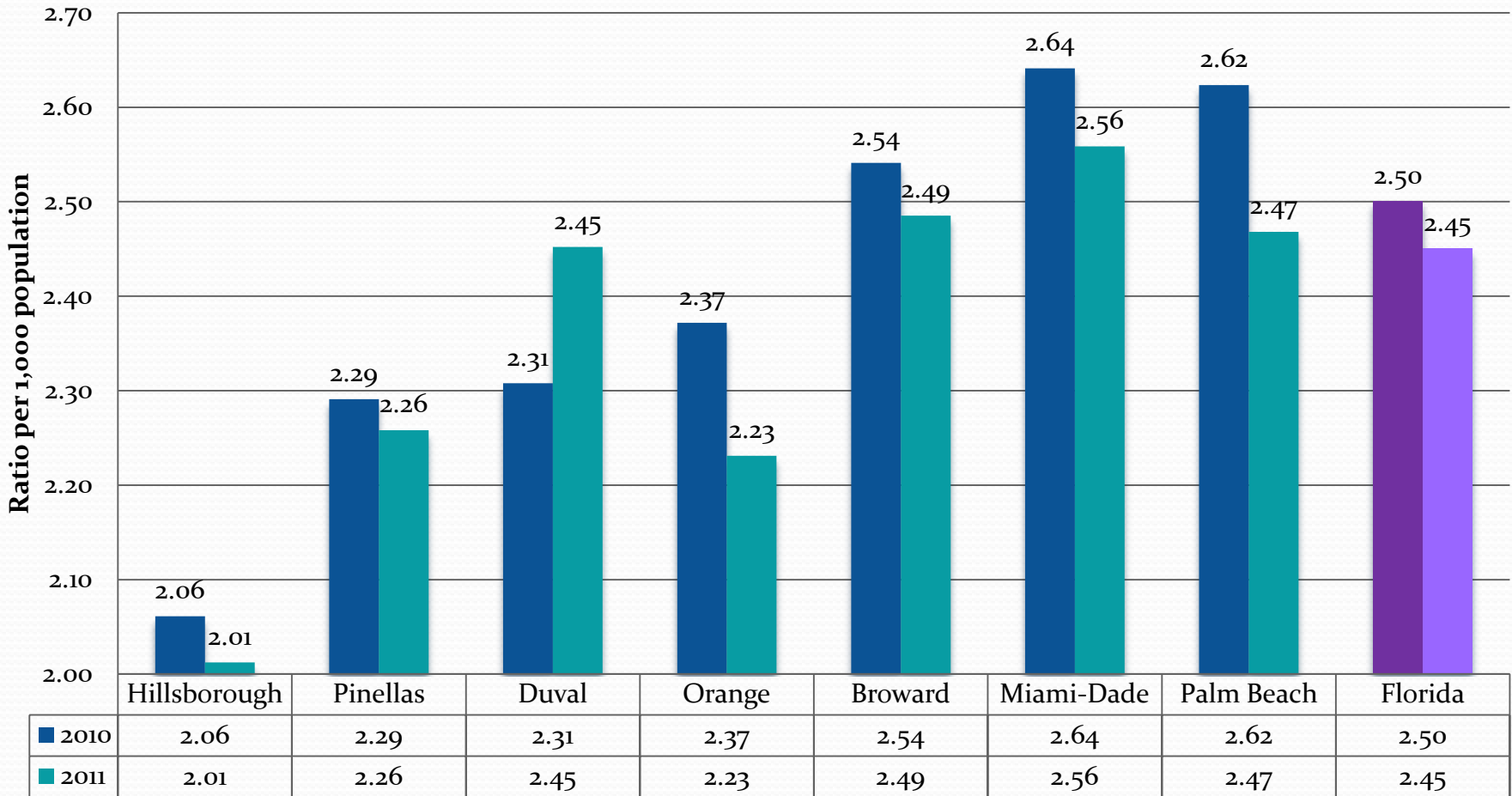
Law Enforcement Officers in Palm Beach County by Agency, 2010-2011



*Total count based on full-time officers as of 6/30 of the specified year (Sheriff's Office includes law enforcement and concurrent officers; Total Law Enforcement includes Concurrent, Sheriff's Offices, Police Departments, State Law Enforcement, Schools and Ports).

Source: Florida Department of Law Enforcement, Criminal Agency Profile Report, 2010-2011, Tallahassee, FL.

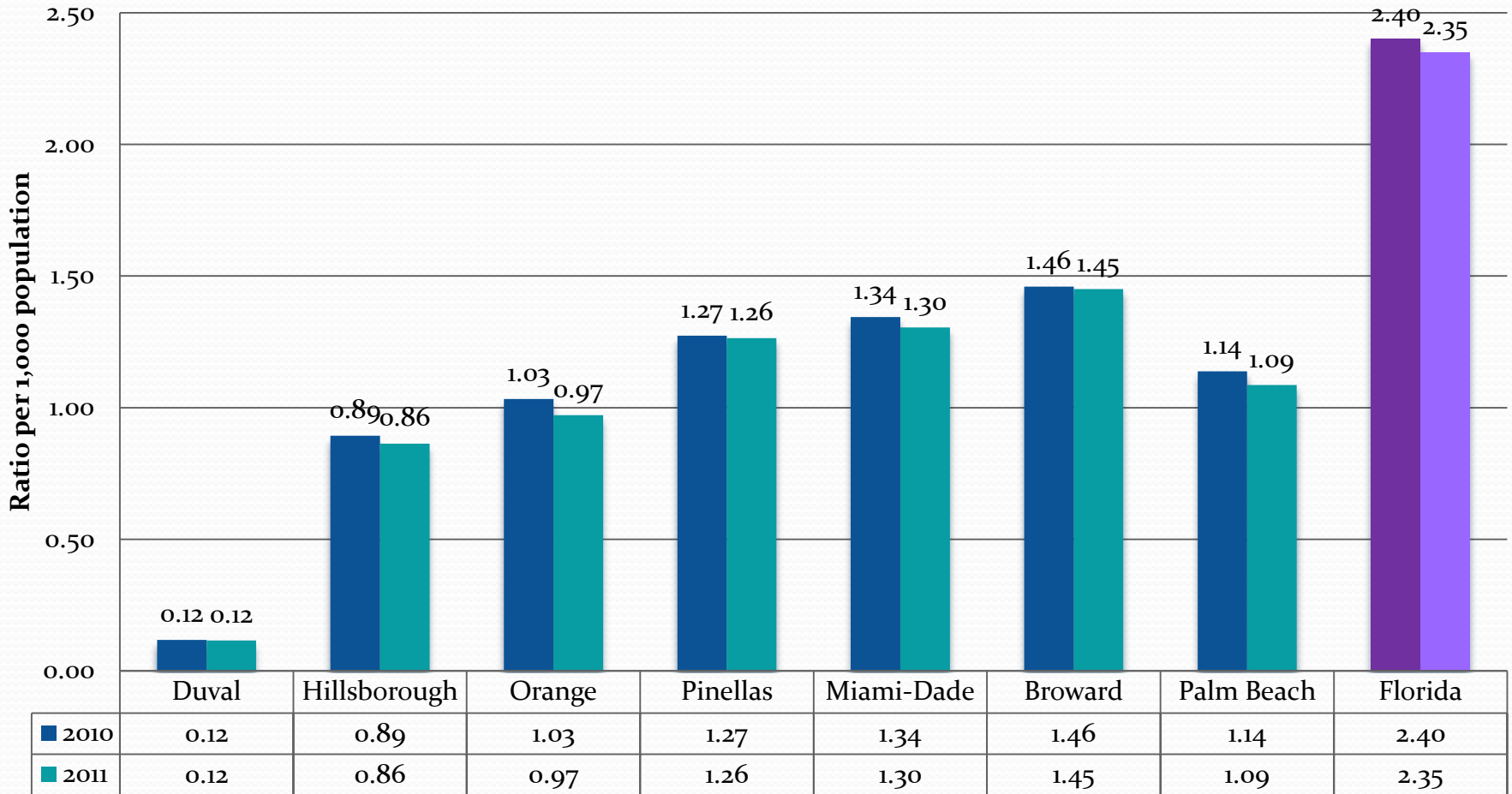
Ratio of Law Enforcement Officers in Palm Beach County, Comparable Counties & the State of Florida, 2010-2011



*Total count based on full-time officers as of 6/30 of the specified year (includes Concurrent, Sheriff's Offices, Police Departments, State Law Enforcement, Schools and Ports).

Source: Florida Department of Law Enforcement, Criminal Agency Profile Report, 2010-2011, Tallahassee, FL.

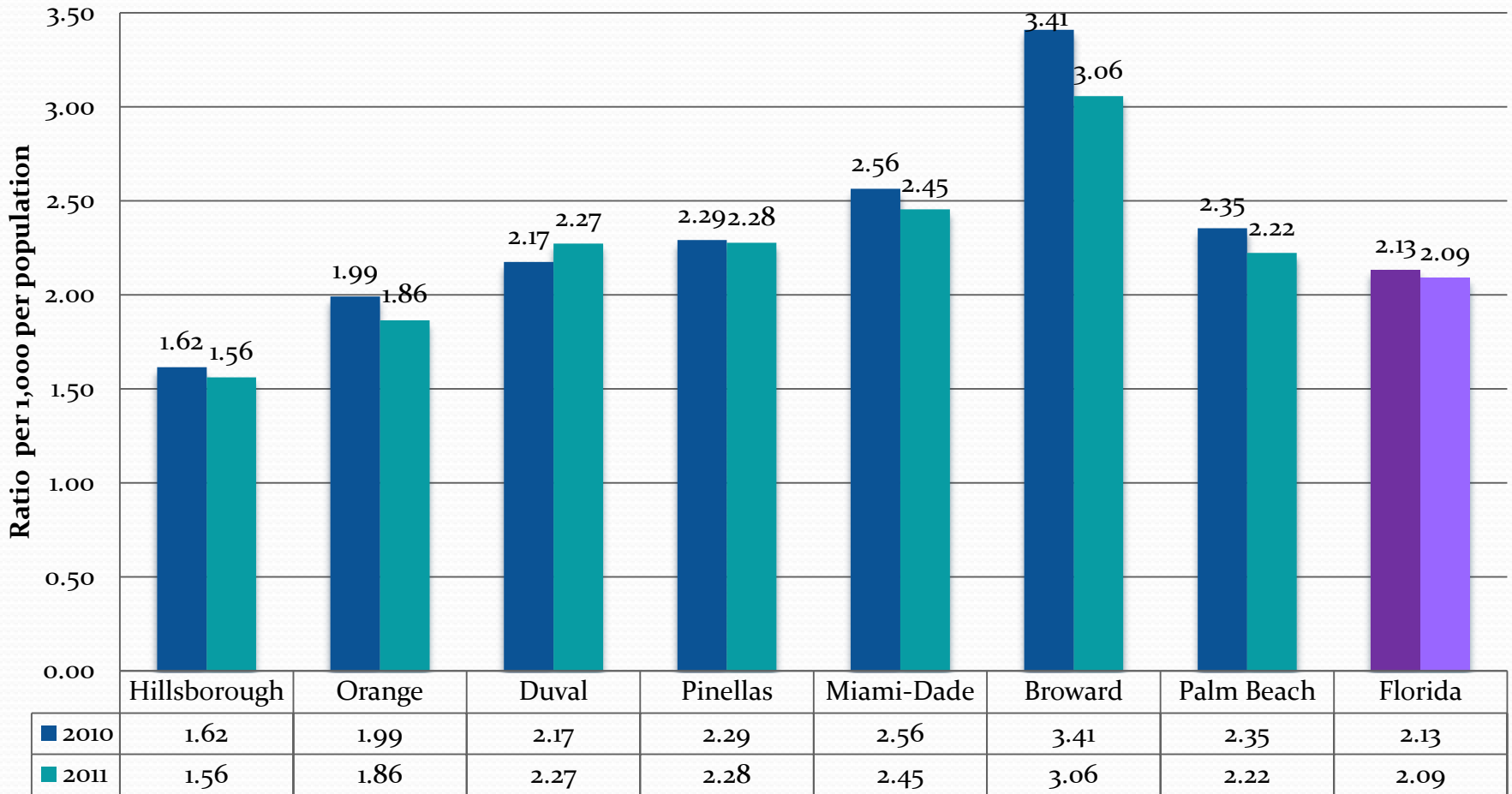
Ratio of Police Department Officers in Palm Beach County, Comparable Counties & the State of Florida, 2010-2011



*Total count based on full-time officers as of 6/30 of the specified year (Schools and Port officers are not included).

Source: Florida Department of Law Enforcement, Criminal Agency Profile Report, 2010-2011, Tallahassee, FL.

Ratio of Sheriff Officers in Palm Beach County, Comparable Counties & the State of Florida, 2010-2011



*Total count based on full-time officers as of 6/30 of the specified year (includes law enforcement and concurrent officers).

Source: Florida Department of Law Enforcement, Criminal Agency Profile Report, 2011-2012, Tallahassee, FL.

Criminal Justice Commission's Mandate?

A fundamental component of any prevention program should have a system that researchers and policymakers can use to:

- assess the magnitude and impact of the problem;
- determine the type and quality of resources needed to respond to the problem; and,
- develop baseline information for evaluating the effectiveness of public policies and programs implemented to combat the problem.

Glossary of Terms

Offenses: Crimes (attempted or committed) reported to law enforcement agencies. Collected for Part I crimes only.

Index Crime: Seven major crime classifications of the most serious offenses selected to serve as a gauge in measuring fluctuations in the overall volume and rate of crime. Further categorized as Index Violent Crimes and Index Non-Violent Crimes.

Index Violent Crimes: Crimes against persons including murder, rape, robbery, and aggravated assault.

Index Non-Violent/Property Crimes: Crimes against property including burglary, larceny, and motor vehicle theft.

Index Rate: Total index crimes per 100,000 population.

Arrests: Arrests of persons made by law enforcement agencies, including notice to appear. Collected for Part I and Part II crimes.

Arrest Rate: Total number of arrests per 100,000 population.

Part I Crimes: Major crime classifications including murder, rape, robbery, aggravated assault, burglary, larceny, and motor vehicle theft.

Part II Crimes: Crime classifications not already designated in Part I crimes including manslaughter, kidnapping/abduction, arson, simple assault, drug arrest, bribery, embezzlement, fraud, counterfeit/forgery, extortion/blackmail, intimidation, prostitution, non-forcible sex, stolen property, dui, destruction/vandalism, gambling, weapons violations, liquor law violations, and miscellaneous (combined category for prostitution & commercial vice, offenses against family & child, vagrancy, suspicion, curfew & loitering, and runaway).

Defendants Filed: Number of defendants against whom a sworn complaint, notice to appear, information, or indictment is filed before the circuit and county courts.

Defendants Disposed: Number defendants for whom a final judicial decision is rendered terminating a criminal proceeding by an acquittal, a dismissal, or a judgment stating the specific sentence (in the case of a conviction).

Average Daily Population: Annual ADP is obtained by calculating the average monthly ADP for the current year. Monthly ADP is calculated by dividing the total number of jail inmates per month by the total number of days for the current month.

Incarceration Rate: Average Daily Population per 1,000 population.



For more information, please contact:

**Criminal Justice Commission
301 North Olive Avenue, Suite 1001
West Palm Beach, FL 33401**

Phone: 561-355-4943

Fax: 561-355-4941

or visit: <http://www.co.palm-beach.fl.us/criminaljustice/>