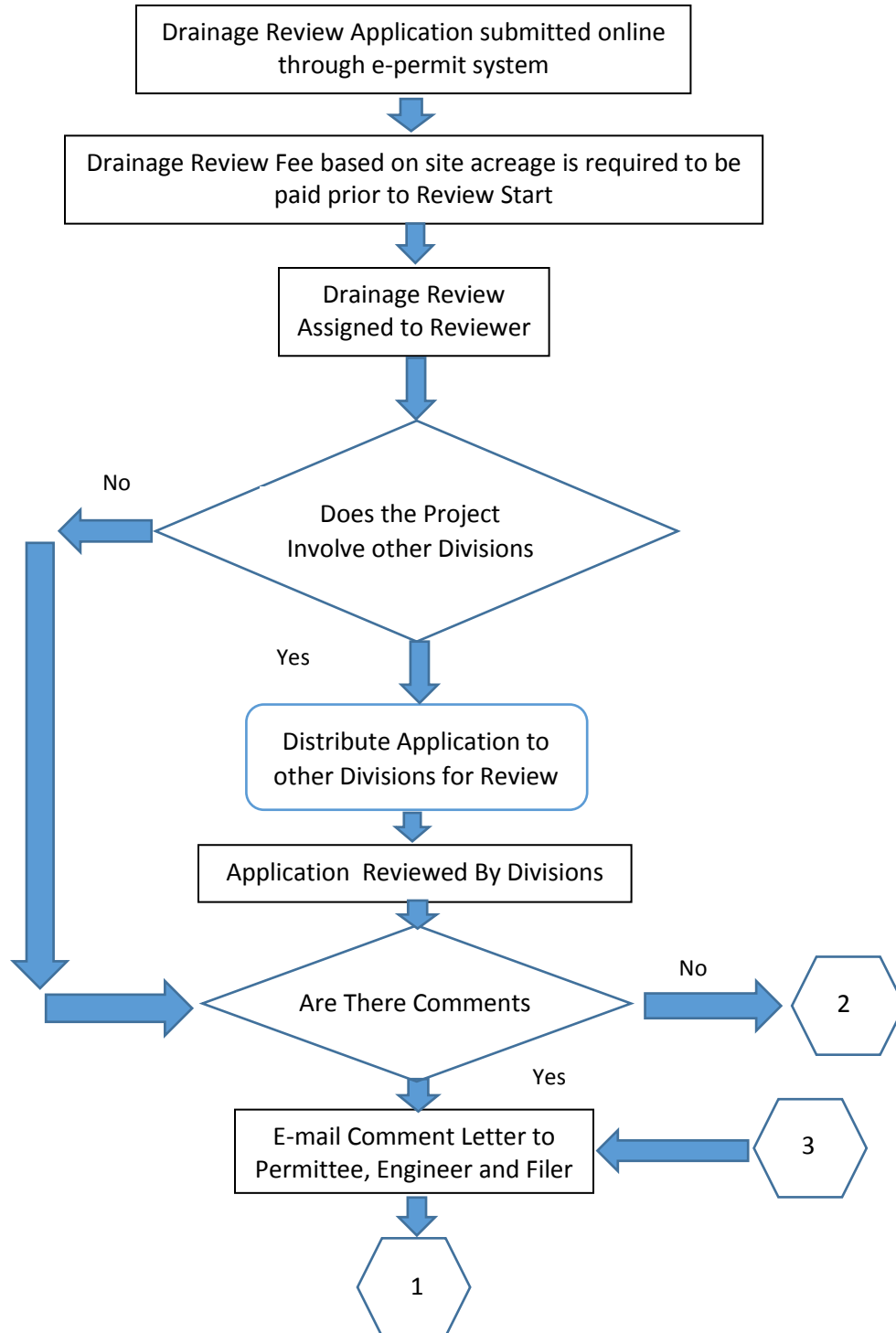


## Drainage Review Process

Note: If a new building is proposed or there is a modification to an existing building then a Drainage Review is required. For Projects with Site Plans processed through a Municipality a Formal Drainage Review is not required. Site Drainage will be reviewed if the site connects to a County Maintained Right -of-Way or a County Maintained Canal or Ditch.



## Drainage Review Process (Continued)

