

COUNTY OF PALM BEACH STATE OF FLORIDA

BOARD OF COUNTY COMMISSIONERS
PROJECT NO. 2016500
FLORIDA MANGO ROAD

FROM 10TH AVENUE NORTH TO EDGEWATER DRIVE

HAL R. VALECHE
DISTRICT 1

GREGG K. WEISS
DISTRICT 2

ROBERT S. WEINROTH
DISTRICT 4

MELISSA MCKINLAY
DISTRICT 6



DAVE KERNER
DISTRICT 3

MARY LOU BERGER
DISTRICT 5

MACK BERNARD
DISTRICT 7

100% SUBMITTAL
NOVEMBER 2020

PLANS PREPARED BY:



HSQ GROUP, INC.
Engineers · Planners · Surveyors
1001 Yamato Road, Suite 105
Boca Raton, Florida 33431 · 561.392.0221
C26258 · LB7924

GOVERNING STANDARDS AND SPECIFICATIONS
FLORIDA DEPARTMENT OF TRANSPORTATION.
DESIGN STANDARDS DATED FY 2020-21
AND STANDARD SPECIFICATIONS FOR ROAD AND
BRIDGE CONSTRUCTION DATED JANUARY 2020.
AS AMENDED BY CONTRACT DOCUMENTS.

ENGINEER'S CERTIFICATION
I HEREBY CERTIFY THAT THE ATTACHED PLANS AND DESIGN
ARE IN SUBSTANTIAL COMPLIANCE WITH THE DESIGN STANDARDS
AND CRITERIA IN EFFECT ON THIS DATE FOR PALM BEACH COUNTY
ENGINEERING DEPARTMENT AND THE STATE OF FLORIDA
DEPARTMENT OF TRANSPORTATION.

APPROVED BY: _____
NOUR SHEHADEH, P.E.

DATE: _____

P.E. NO.: FL REGISTRATION NO 48307

INDEX OF SIGNING AND PAVEMENT MARKING PLANS

SHEET NO.	SHEET DESCRIPTION
S-1	TITLE SHEET
S-2 TO S-3	TABULATION OF QUANTITIES
S-4	GENERAL NOTES
S-5 TO S-14	SIGNING AND PAVEMENT MARKING PLAN
S-15	GUIDE SIGN WORKSHEET

PALM BEACH COUNTY
 ENGINEERING AND PUBLIC WORKS
 ROADWAY PRODUCTION
 P. O. BOX 21229, WEST PALM BEACH, FLORIDA



NO.	REVISION	BY	DATE

SCALE: AS SHOWN
APPROVED:
DRAWN:
CHECKED:
DATE:

PROJECT: **FLORIDA MANGO ROAD**
 DESIGN FILE NAME: ROADWAY MET/SR001.DGN
 DRAWING NO.

SHEET: S-1
 OF: S-15
 PROJECT NO. 2016500

TABULATION OF QUANTITIES


PAY ITEM NO.	DESCRIPTION	UNIT	SHEET NUMBERS												TOTAL THIS SHEET		GRAND TOTAL			
			S-5		S-6		S-7		S-8		S-9		S-10		S-11		PLAN	FINAL	PLAN	FINAL
			PLAN	FINAL	PLAN	FINAL	PLAN	FINAL	PLAN	FINAL	PLAN	FINAL	PLAN	FINAL						
	SINGLE POST SIGN FURNISH & INSTALL	AS			2		1		1		1		1		2		8			
	SINGLE POST SIGN, RELOCATE	AS	1		2		4		2		3		2		5		19.00			
	SINGLE POST SIGN, REMOVE	AS																		
	RETRO-REFLECTIVE PAVEMENT MARKERS	EA	76		46		66		68		44		94		73		467.00			
	THERMOPLASTIC, STANDARD, WHITE, SOLID, 18" FOR DIAGONALS AND CHEVRONS	LF	85.7														85.70			
	THERMOPLASTIC, STANDARD, WHITE, SOLID, 24" FOR STOP LINE AND CROSSWALK	LF	133.0		12.0				33.0		20.0		15.0		47.0		260.00			
	THERMO., STD., WHITE, DOTTED EXT., 6" (6/10)	GM	0.12		0.07		0.07		0.07		0.04		0.024		0.063		0.46			
	THERMO., STD., MESSAGE OR SYMBOL (BIKE / ARROW)	EA			2		1.000		1.000		1.000		1.000		2.000		8.00			
	THERMO., STD., ARROWS	EA	9.00		7		6		3		5				6		36.00			
	THERMOPLASTIC, STANDARD, YELLOW, SOLID, 18" FOR DIAGONAL OR CHEVRONS	LF	29.70				86.90		51.40				353.70				521.70			
	THERMO., STD., YELLOW, DOTTED EXT., 6" (6/10)	GM	0.04		0.07				0.04		0.04		0.04		0.04		0.27			
	THERMOPLASTIC, STANDARD, OTHER SURFACES, WHITE, SOLID, 6"	NM	0.19		0.20		0.15		0.24		0.21		0.21		0.28		1.48			
	THERMOPLASTIC, STANDARD, OTHER SURFACES, WHITE, SOLID, 8"	GM	0.03														0.03			
	THERMOPLASTIC, STANDARD, OTHER SURFACES, YELLOW, SOLID, 6"	NM	0.20		0.12		0.27		0.22		0.16		0.36		0.18		1.51			
	THERMOPLASTIC, STANDARD, OTHER SURFACES, YELLOW, SKIP, 6" (10/30)	GM			0.09		0.17				0.06		0.02				0.34			



HSQ GROUP, INC.
 Engineers · Planners · Surveyors
 1001 Yamato Road, Suite 105
 Boca Raton, Florida 33431 - 561.392.0221
 C26258 · LB7924

Seal:
 Nour Shehadeh
 PE# 48307

No.	Revisions	By	Date



PALM BEACH COUNTY
 ENGINEERING AND PUBLIC WORKS
ROADWAY PRODUCTION
 P.O. BOX 21229, WEST PALM BEACH, FLORIDA


SCALE:
 APPROVED:
 DRAWN:
 CHECKED:
 DATE:

TABULATION OF QUANTITIES

SHEET: S-2
 OF: S-15
 PROJECT NO. 2016500

TABULATION OF QUANTITIES

PAY ITEM NO.	DESCRIPTION	UNIT	SHEET NUMBERS														TOTAL THIS SHEET		GRAND TOTAL	
			S-12		S-13		S-14										PLAN	FINAL	PLAN	FINAL
			PLAN	FINAL	PLAN	FINAL	PLAN	FINAL	PLAN	FINAL	PLAN	FINAL	PLAN	FINAL						
	SINGLE POST SIGN FURNISH & INSTALL	AS	3.00		2.00		1.00										6.00		14.00	
	SINGLE POST SIGN, RELOCATE	AS	4.00		1.00												5.00		24.00	
	SINGLE POST SIGN, REMOVE	AS	1.00		1.00												2.00		2.00	
	RETRO-REFLECTIVE PAVEMENT MARKERS	EA	56		40		104										200.00		667.00	
	THERMOPLASTIC, STANDARD, WHITE, SOLID, 18" FOR DIAGONALS AND CHEVRONS	LF					206										206.00		291.70	
	THERMOPLASTIC, STANDARD, WHITE, SOLID, 24" FOR STOP LINE AND CROSSWALK	LF	39.0		20.0												59.00		319.00	
	THERMO., STD., WHITE, DOTTED EXT., 6" (6/10)	GM	0.09		0.15		0.07										0.31		0.77	
	THERMO., STD., MESSAGE OR SYMBOL (BIKE / ARROW)	EA	1.000		1.000		1.00										3.00		11.00	
	THERMO., STD., ARROWS	EA	4.00		6.00		4.00										14.00		50.00	
	THERMOPLASTIC, STANDARD, YELLOW, SOLID, 18" FOR DIAGONAL OR CHEVRONS	LF	22.6				75.00										97.60		619.30	
	THERMO., STD., YELLOW, DOTTED EXT., 6" (6/10)	GM	0.04														0.04		0.31	
	THERMOPLASTIC, STANDARD, OTHER SURFACES, WHITE, SOLID, 6"	NM	0.19		0.04		0.10										0.33		1.81	
	THERMOPLASTIC, STANDARD, OTHER SURFACES, WHITE, SOLID, 8"	GM					0.070										0.07		0.10	
	THERMOPLASTIC, STANDARD, OTHER SURFACES, YELLOW, SOLID, 6"	NM	0.20		0.15		0.25										0.60		2.11	
	THERMOPLASTIC, STANDARD, OTHER SURFACES, YELLOW, SKIP, 6" (10/30)	GM	0.12		0.21		0.12										0.45		0.79	



HSQ GROUP, INC.
Engineers · Planners · Surveyors
1001 Yamato Road, Suite 105
Boca Raton, Florida 33431 - 561.392.0221
C26258 · LB7924

Seal:
Nour Shehadeh
PE# 48307

No.	Revisions	By	Date



PALM BEACH COUNTY
ENGINEERING AND PUBLIC WORKS
ROADWAY PRODUCTION
P.O. BOX 21229, WEST PALM BEACH, FLORIDA

SCALE:
APPROVED:
DRAWN:
CHECKED:
DATE:

TABULATION OF QUANTITIES

SHEET: S-3
OF: S-15
PROJECT NO. 2016500

SIGNING & PAVEMENT MARKING NOTES

1. ALL REMOVED SIGNS AND THEIR SUPPORTS BECOME THE PROPERTY OF THE CONTRACTOR TO BE DISPOSED OF PROPERLY UNLESS OTHERWISE NOTED ON THE PLANS.
2. IT IS THE CONTRACTOR'S RESPONSIBILITY TO REMOVE AND REPLACE ALL EXISTING SIGNS THAT CONFLICT WITH CONSTRUCTION OPERATIONS. IF SIGNS ARE DAMAGED BY THE CONTRACTOR, THE SIGNS SHALL BE REPLACED AT THE CONTRACTOR'S EXPENSE.
3. THE LANE WIDTH DIMENSIONS SHOWN IN THE SIGNING AND PAVEMENT MARKING PLANS REFLECT THE NOMINAL LANE WIDTHS, NOT THE DISTANCE BETWEEN THE STRIPES. SEE INDEX 711-001 FOR PLACEMENT OF LANE DETAILS.
4. MATCH EXISTING PAVEMENT MARKINGS AT THE BEGINNING AND END OF THE PROJECT.
5. ALL EXISTING SIGNS ARE TO REMAIN UNLESS OTHERWISE NOTED IN THE PLANS.
6. LOCATIONS OF PROPOSED SIGNS ON SIDE STREETS ARE APPROXIMATE. THE CONTRACTOR SHALL INSTALL SIGNS AS DIRECTED BY THE ENGINEER DURING CONSTRUCTION AND IN ACCORDANCE WITH FDOT DESIGN INDEX 700-101.
7. PAVEMENT MARKINGS AND GEOMETRICS SHALL BE IN ACCORDANCE WITH THE MANUAL ON UNIFORM TRAFFIC CONTROL DEVICES FOR STREETS AND HIGHWAYS (LATEST EDITION) AND PALM BEACH COUNTY TYPICAL NO. T-P-18
8. ALL PAVEMENT MARKINGS, GEOMETRICS AND RPM'S SHALL BE REDONE OR BROUGHT UP TO PRESENT STANDARDS BASED ON PALM BEACH COUNTY TYPICALS T-P-18, SHEET 3, CHART 1.




HSQ GROUP, INC.
 Engineers · Planners · Surveyors
 1001 Yamato Road, Suite 105
 Boca Raton, Florida 33431 · 561.392.0221
 C26258 · LB7924

Seal:

 Nour Shehadeh
 PE# 48307

No.	Revisions	By	Date

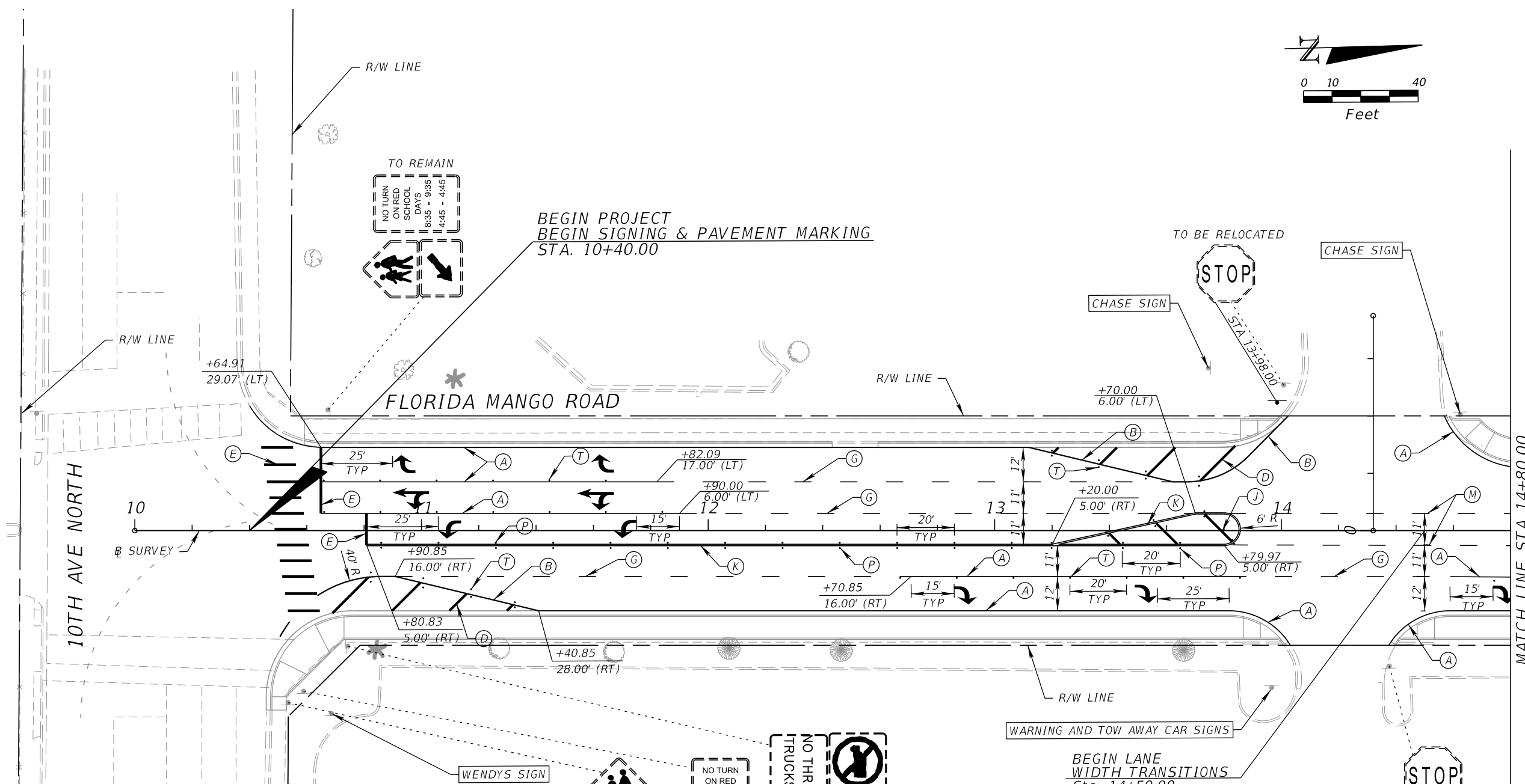
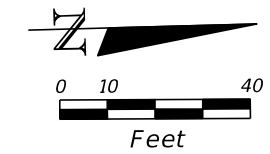


PALM BEACH COUNTY
 ENGINEERING AND PUBLIC WORKS
ROADWAY PRODUCTION
 P.O. BOX 21229, WEST PALM BEACH, FLORIDA

SCALE:
 APPROVED:
 DRAWN:
 CHECKED:
 DATE:

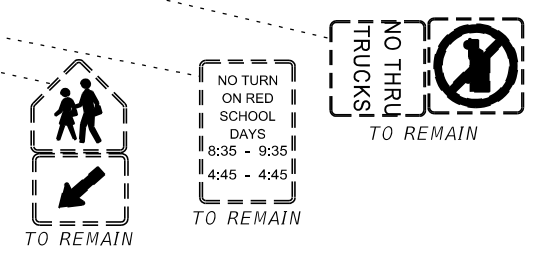
GENERAL NOTES

SHEET: S-4
 OF: S-15
 PROJECT NO.
 2016500



STRIPING KEY

(A) - 6" SOLID WHITE	(L) - 6" SKIP YELLOW TYP (10'-30')
(B) - 8" SOLID WHITE	(M) - 6" SKIP YELLOW TYP (6'-10')
(C) - 12" SOLID WHITE	(N) - 6" SKIP YELLOW TYP (2'-4')
(D) - 18" SOLID WHITE	(P) - RPM BI-DIRECTIONAL AMBER/AMBER
(E) - 24" SOLID WHITE	(R) - FDP WHITE
(F) - 6" SKIP WHITE TYP (10'-30')	(S) - FDP YELLOW
(G) - 6" SKIP WHITE TYP (6'-10')	(T) - RPM BI-DIRECTIONAL WHITE/RED
(H) - 6" SKIP WHITE TYP (2'-4')	(U) - RPM BI-DIRECTIONAL RED/YELLOW
(I) - 6" SOLID YELLOW	
(J) - 18" SOLID YELLOW	
(K) - 6" DOUBLE YELLOW	



HSQ GROUP, INC.
 Engineers · Planners · Surveyors
 1001 Yamato Road, Suite 105
 Boca Raton, Florida 33431 · 561.392.0221
 C26258 · LB7924

Seal:
 Nour Shehadeh
 PE# 48307

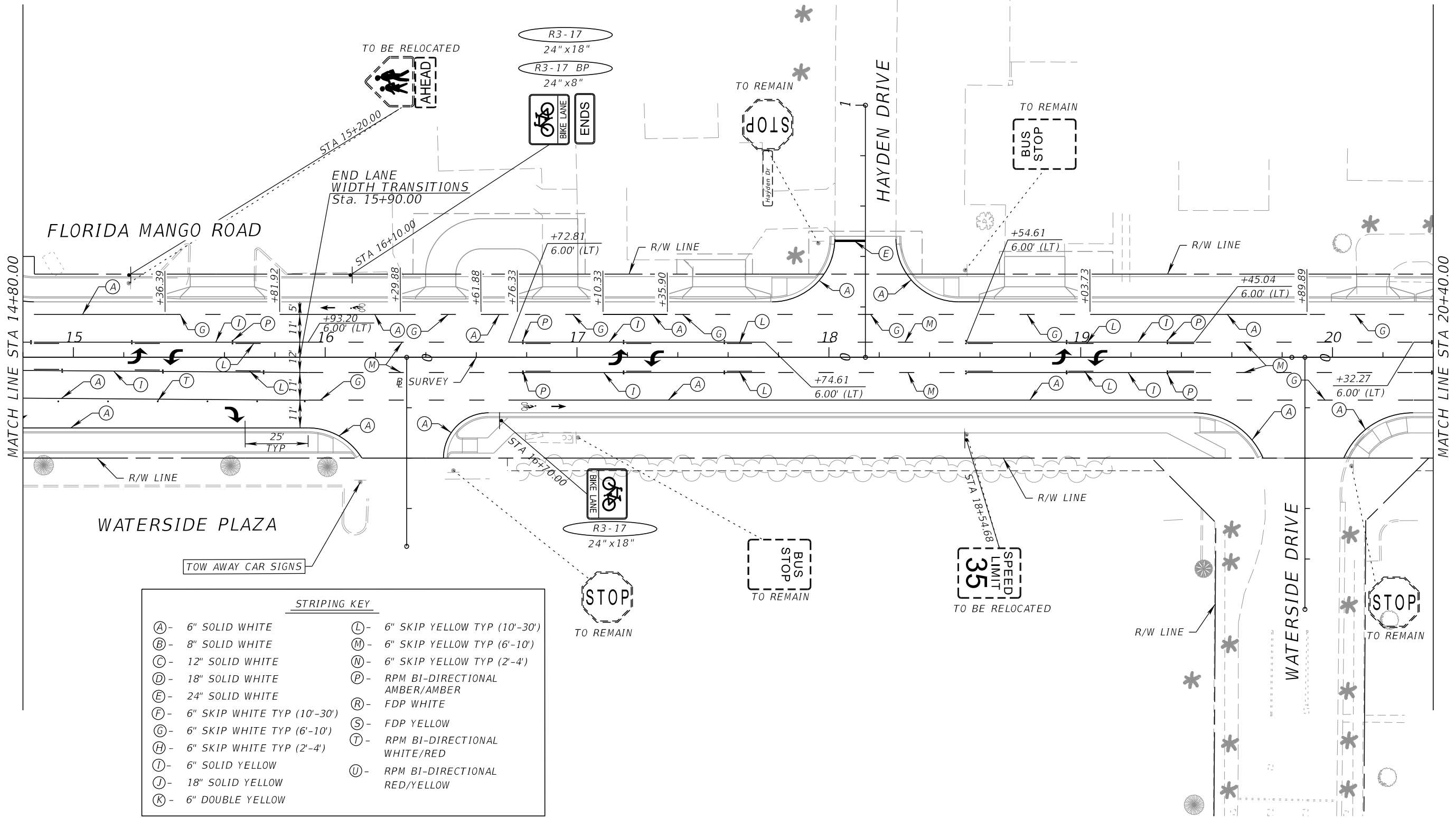
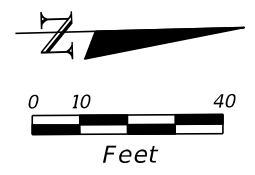
No.	Revisions	By	Date

PALM BEACH COUNTY
 ENGINEERING AND PUBLIC WORKS
 ROADWAY PRODUCTION
 P.O. BOX 21229, WEST PALM BEACH, FLORIDA

SCALE: 1"=40'
 APPROVED:
 DRAWN:
 CHECKED:
 DATE:

SIGNING AND PAVEMENT MARKING PLAN

SHEET: S-5
 OF: S-15
 PROJECT NO. 2016500



STRIPING KEY

(A) - 6" SOLID WHITE	(L) - 6" SKIP YELLOW TYP (10'-30')
(B) - 8" SOLID WHITE	(M) - 6" SKIP YELLOW TYP (6'-10')
(C) - 12" SOLID WHITE	(N) - 6" SKIP YELLOW TYP (2'-4')
(D) - 18" SOLID WHITE	(P) - RPM BI-DIRECTIONAL AMBER/AMBER
(E) - 24" SOLID WHITE	(R) - FDP WHITE
(F) - 6" SKIP WHITE TYP (10'-30')	(S) - FDP YELLOW
(G) - 6" SKIP WHITE TYP (6'-10')	(T) - RPM BI-DIRECTIONAL WHITE/RED
(H) - 6" SKIP WHITE TYP (2'-4')	(U) - RPM BI-DIRECTIONAL RED/YELLOW
(I) - 6" SOLID YELLOW	
(J) - 18" SOLID YELLOW	
(K) - 6" DOUBLE YELLOW	

HSQ GROUP, INC.
 Engineers · Planners · Surveyors
 1001 Yamato Road, Suite 105
 Boca Raton, Florida 33431 · 561.392.0221
 C26258 · LB7924

Seal:
 Nour Shehadeh
 PE# 48307

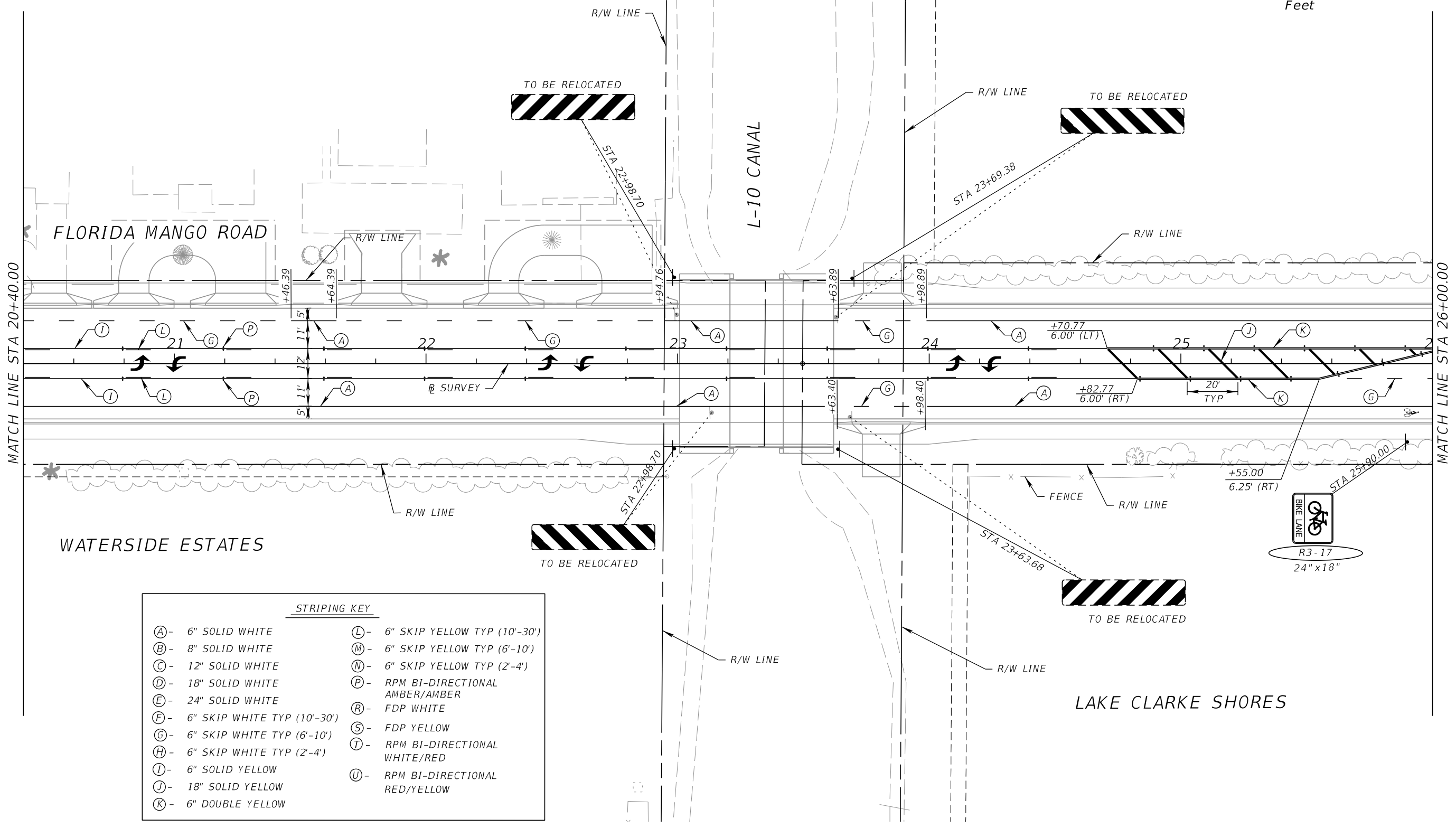
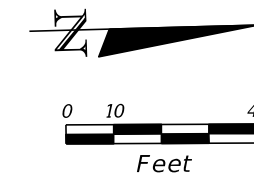
No.	Revisions	By	Date

PALM BEACH COUNTY
 ENGINEERING AND PUBLIC WORKS
 ROADWAY PRODUCTION
 P.O. BOX 21229, WEST PALM BEACH, FLORIDA

SCALE: 1"=40'
 APPROVED:
 DRAWN:
 CHECKED:
 DATE:

SIGNING AND PAVEMENT MARKING PLAN

SHEET: S-6
 OF: S-15
 PROJECT NO. 2016500



STRIPING KEY			
(A) - 6" SOLID WHITE	(L) - 6" SKIP YELLOW TYP (10'-30')	(M) - 6" SKIP YELLOW TYP (6'-10')	(N) - 6" SKIP YELLOW TYP (2'-4')
(B) - 8" SOLID WHITE	(P) - RPM BI-DIRECTIONAL AMBER/AMBER	(R) - FDP WHITE	(S) - FDP YELLOW
(C) - 12" SOLID WHITE	(T) - RPM BI-DIRECTIONAL WHITE/RED	(U) - RPM BI-DIRECTIONAL RED/YELLOW	
(D) - 18" SOLID WHITE			
(E) - 24" SOLID WHITE			
(F) - 6" SKIP WHITE TYP (10'-30')			
(G) - 6" SKIP WHITE TYP (6'-10')			
(H) - 6" SKIP WHITE TYP (2'-4')			
(I) - 6" SOLID YELLOW			
(J) - 18" SOLID YELLOW			
(K) - 6" DOUBLE YELLOW			

HSQ GROUP, INC.
 Engineers · Planners · Surveyors
 1001 Yamato Road, Suite 105
 Boca Raton, Florida 33431 · 561.392.0221
 C26258 · LB7924

Seal:
 Nour Shehadeh
 PE# 48307

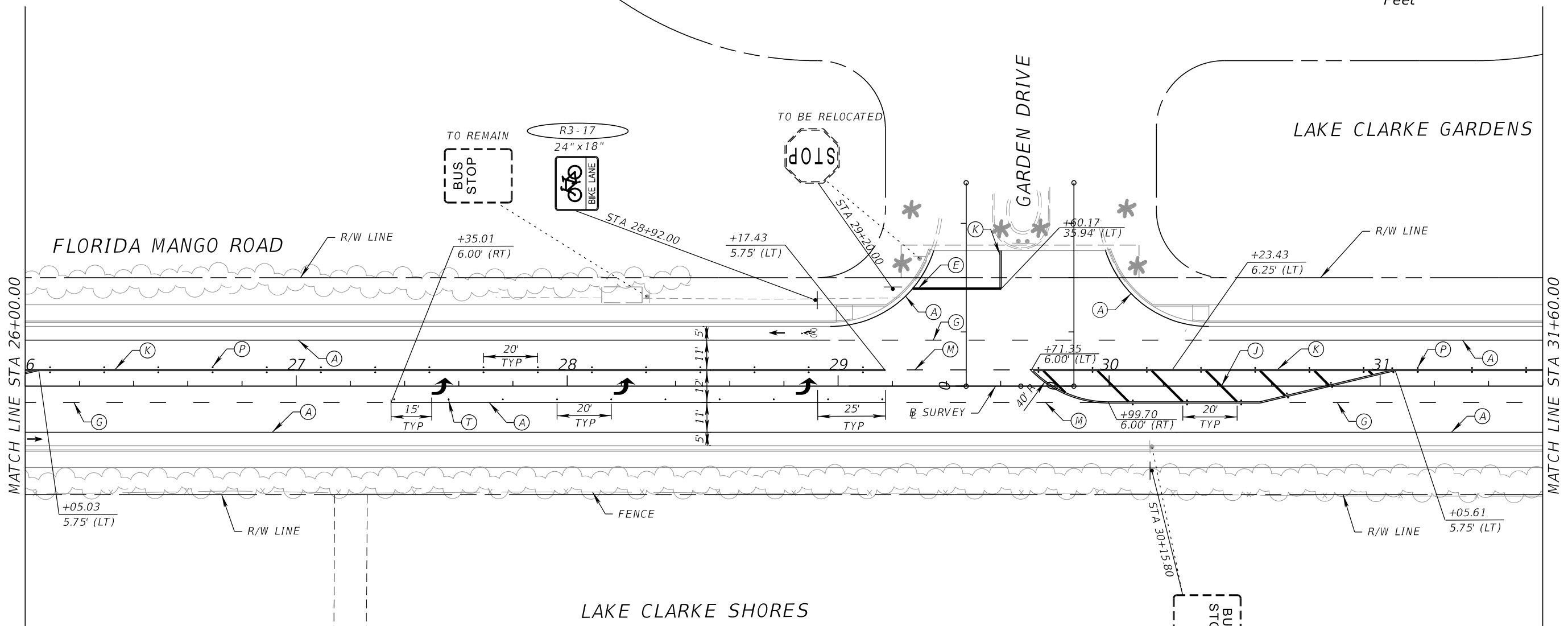
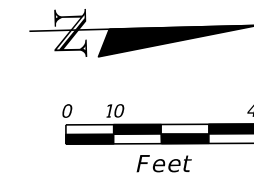
No.	Revisions	By	Date

PALM BEACH COUNTY
 ENGINEERING AND PUBLIC WORKS
ROADWAY PRODUCTION
 P.O. BOX 21229, WEST PALM BEACH, FLORIDA

SCALE: 1"=40'
 APPROVED:
 DRAWN:
 CHECKED:
 DATE:

SIGNING AND PAVEMENT MARKING PLAN

SHEET: S-7
 OF: S-15
 PROJECT NO. 2016500



STRIPING KEY

(A) - 6" SOLID WHITE	(L) - 6" SKIP YELLOW TYP (10'-30')
(B) - 8" SOLID WHITE	(M) - 6" SKIP YELLOW TYP (6'-10')
(C) - 12" SOLID WHITE	(N) - 6" SKIP YELLOW TYP (2'-4')
(D) - 18" SOLID WHITE	(P) - RPM BI-DIRECTIONAL AMBER/AMBER
(E) - 24" SOLID WHITE	(R) - FDP WHITE
(F) - 6" SKIP WHITE TYP (10'-30')	(S) - FDP YELLOW
(G) - 6" SKIP WHITE TYP (6'-10')	(T) - RPM BI-DIRECTIONAL WHITE/RED
(H) - 6" SKIP WHITE TYP (2'-4')	(U) - RPM BI-DIRECTIONAL RED/YELLOW
(I) - 6" SOLID YELLOW	
(J) - 18" SOLID YELLOW	
(K) - 6" DOUBLE YELLOW	

HSQ GROUP, INC.
 Engineers · Planners · Surveyors
 1001 Yamato Road, Suite 105
 Boca Raton, Florida 33431 · 561.392.0221
 C26258 · LB7924

Seal:
 Nour Shehadeh
 PE# 48307

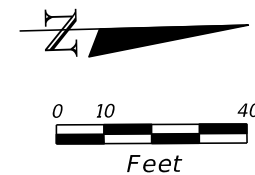
No.	Revisions	By	Date

PALM BEACH COUNTY
 ENGINEERING AND PUBLIC WORKS
 ROADWAY PRODUCTION
 P.O. BOX 21229, WEST PALM BEACH, FLORIDA

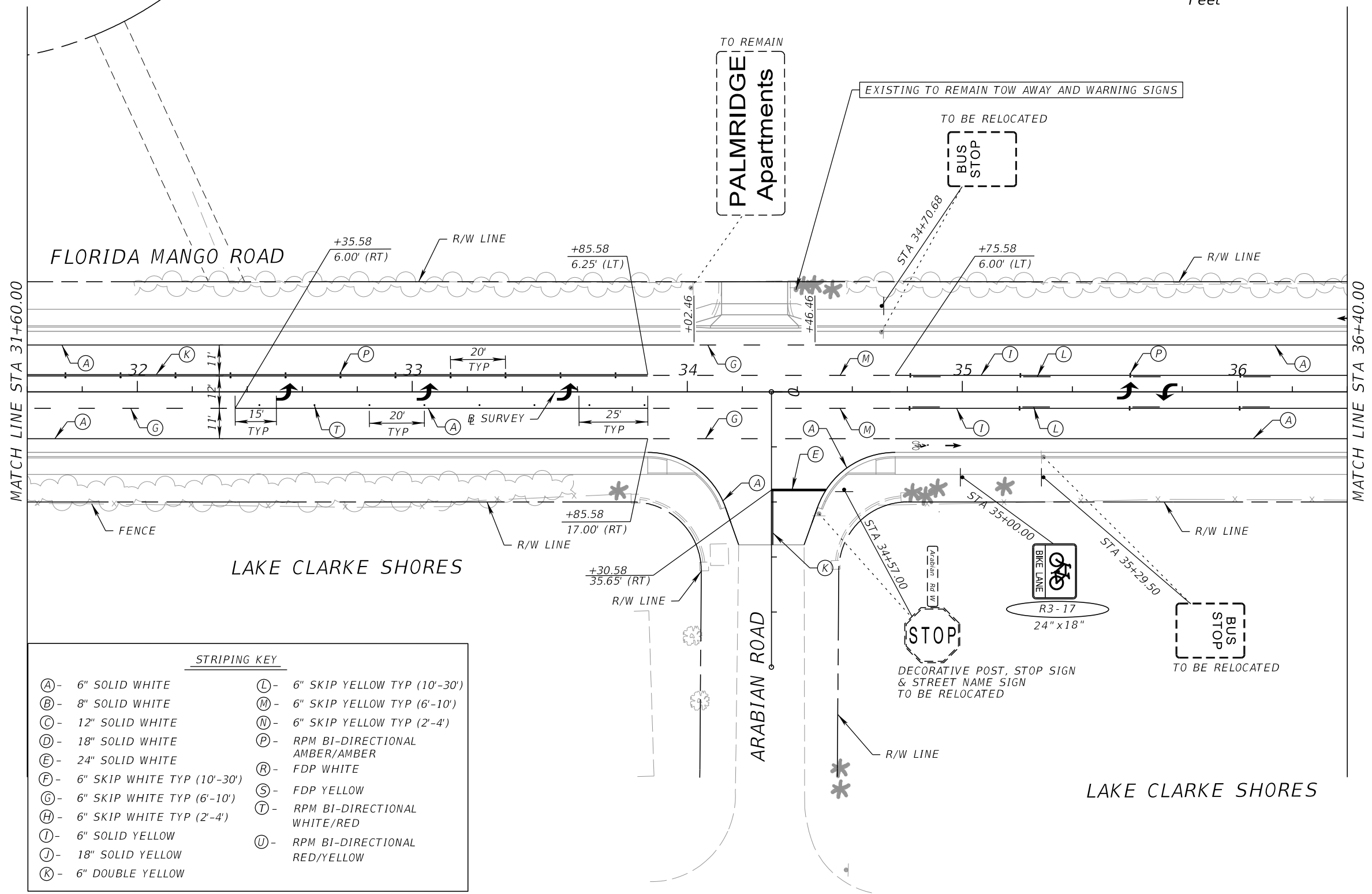
SCALE: 1"=40'
 APPROVED:
 DRAWN:
 CHECKED:
 DATE:

SIGNING AND PAVEMENT MARKING PLAN

SHEET: S-8
 OF: S-15
 PROJECT NO. 2016500



PALM RIDGE APARTMENTS



STRIPING KEY

(A) - 6" SOLID WHITE	(L) - 6" SKIP YELLOW TYP (10'-30')
(B) - 8" SOLID WHITE	(M) - 6" SKIP YELLOW TYP (6'-10')
(C) - 12" SOLID WHITE	(N) - 6" SKIP YELLOW TYP (2'-4')
(D) - 18" SOLID WHITE	(P) - RPM BI-DIRECTIONAL AMBER/AMBER
(E) - 24" SOLID WHITE	(R) - FDP WHITE
(F) - 6" SKIP WHITE TYP (10'-30')	(S) - FDP YELLOW
(G) - 6" SKIP WHITE TYP (6'-10')	(T) - RPM BI-DIRECTIONAL WHITE/RED
(H) - 6" SKIP WHITE TYP (2'-4')	(U) - RPM BI-DIRECTIONAL RED/YELLOW
(I) - 6" SOLID YELLOW	
(J) - 18" SOLID YELLOW	
(K) - 6" DOUBLE YELLOW	

HSQ GROUP, INC.
 Engineers · Planners · Surveyors
 1001 Yamato Road, Suite 105
 Boca Raton, Florida 33431 · 561.392.0221
 C26258 · LB7924

Seal:
 Nour Shehadeh
 PE# 48307

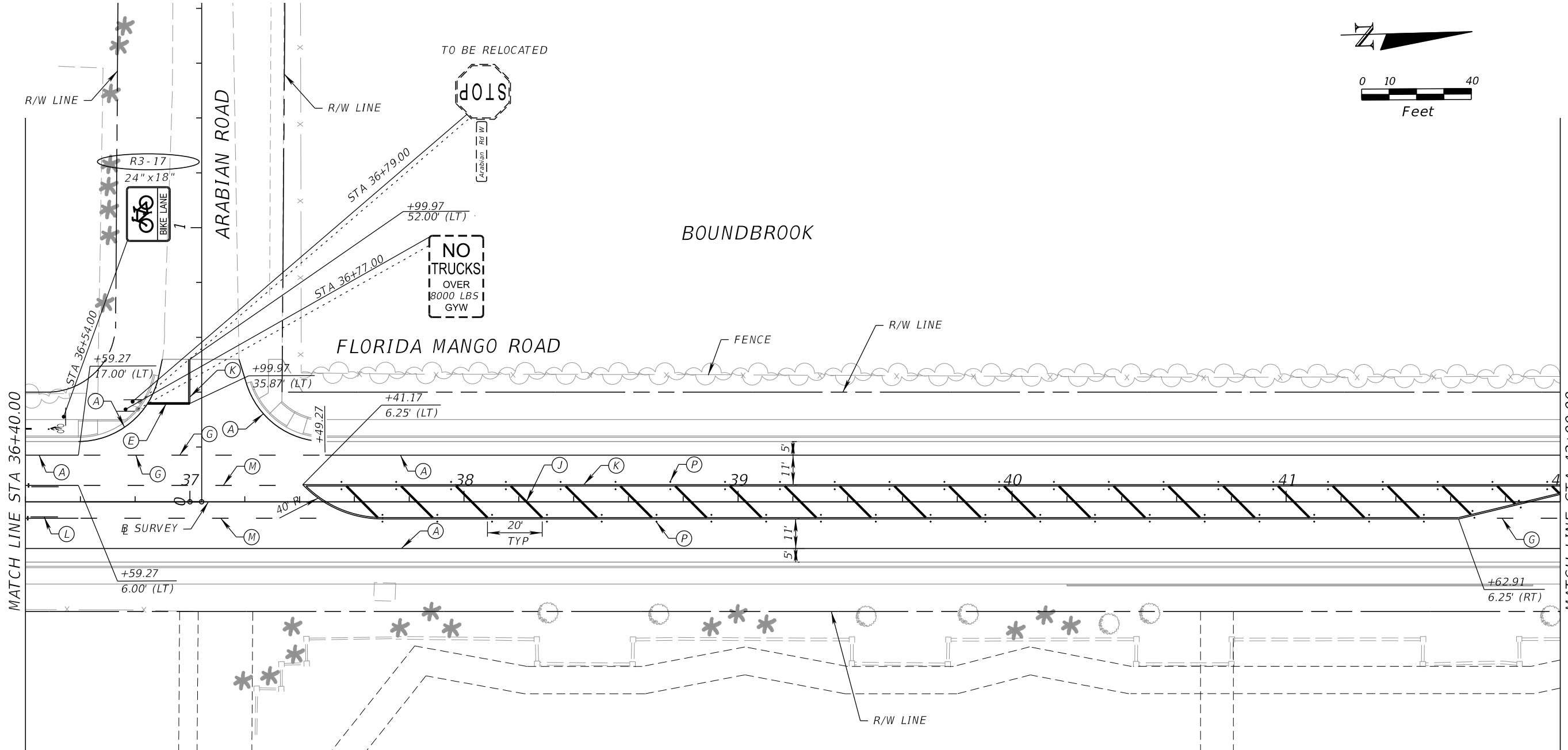
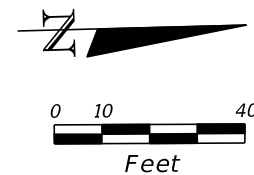
No.	Revisions	By	Date

PALM BEACH COUNTY
 ENGINEERING AND PUBLIC WORKS
ROADWAY PRODUCTION
 P.O. BOX 21229, WEST PALM BEACH, FLORIDA

SCALE: 1"=40'
 APPROVED:
 DRAWN:
 CHECKED:
 DATE:

SIGNING AND PAVEMENT MARKING PLAN

SHEET: S-9
 OF: S-15
 PROJECT NO. 2016500



STRIPING KEY

(A) - 6" SOLID WHITE	(L) - 6" SKIP YELLOW TYP (10'-30')
(B) - 8" SOLID WHITE	(M) - 6" SKIP YELLOW TYP (6'-10')
(C) - 12" SOLID WHITE	(N) - 6" SKIP YELLOW TYP (2'-4')
(D) - 18" SOLID WHITE	(P) - RPM BI-DIRECTIONAL AMBER/AMBER
(E) - 24" SOLID WHITE	(R) - FDP WHITE
(F) - 6" SKIP WHITE TYP (10'-30')	(S) - FDP YELLOW
(G) - 6" SKIP WHITE TYP (6'-10')	(T) - RPM BI-DIRECTIONAL WHITE/RED
(H) - 6" SKIP WHITE TYP (2'-4')	(U) - RPM BI-DIRECTIONAL RED/YELLOW
(I) - 6" SOLID YELLOW	
(J) - 18" SOLID YELLOW	
(K) - 6" DOUBLE YELLOW	

HSQ GROUP, INC.
 Engineers · Planners · Surveyors
 1001 Yamato Road, Suite 105
 Boca Raton, Florida 33431 · 561.392.0221
 C26258 · LB7924

Seal:
 Nour Shehadeh
 PE# 48307

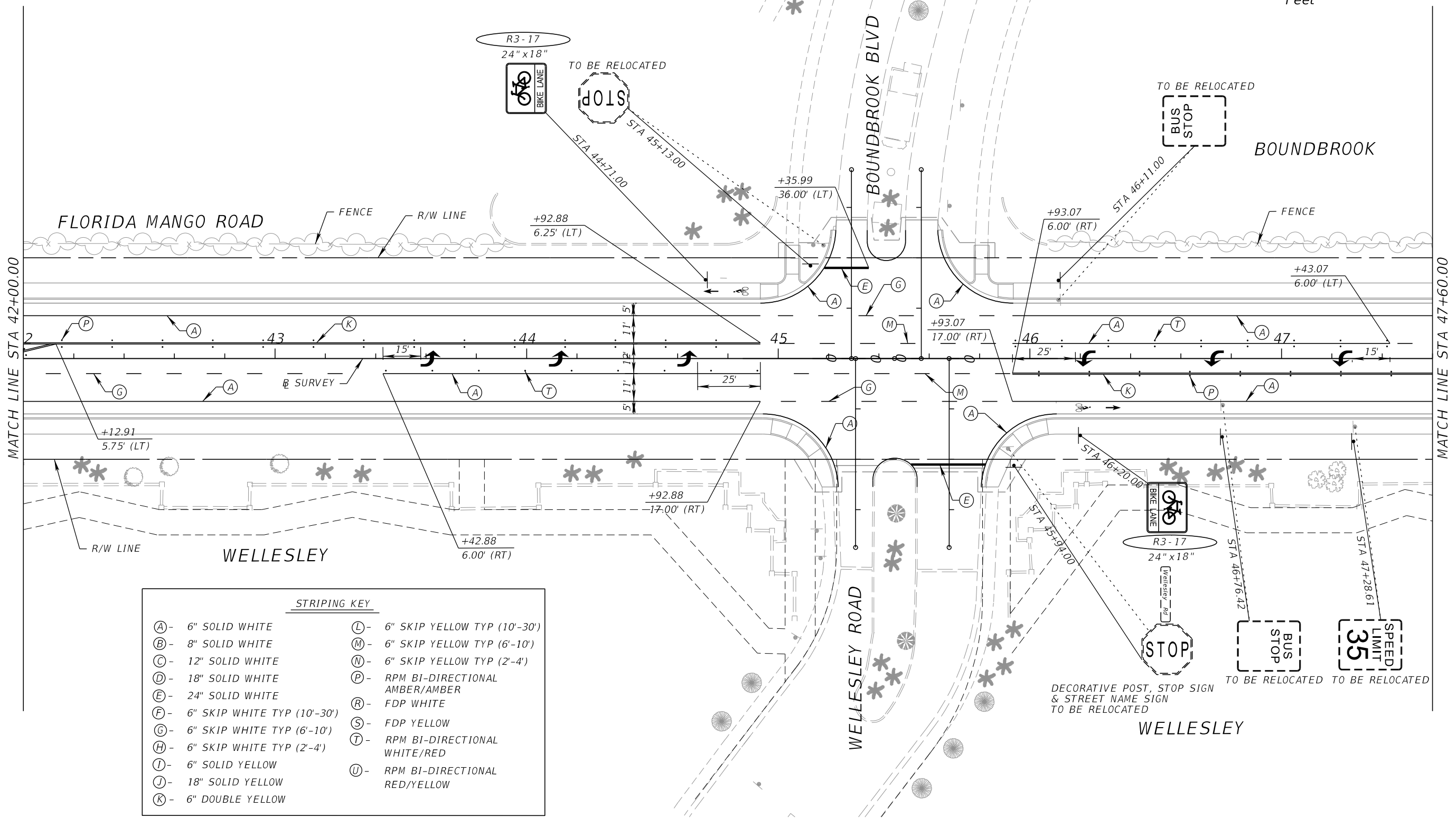
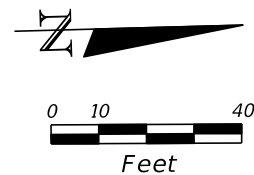
No.	Revisions	By	Date

PALM BEACH COUNTY
 ENGINEERING AND PUBLIC WORKS
ROADWAY PRODUCTION
 P.O. BOX 21229, WEST PALM BEACH, FLORIDA

SCALE: 1"=40'
 APPROVED:
 DRAWN:
 CHECKED:
 DATE:

SIGNING AND PAVEMENT MARKING PLAN

SHEET: S-10
 OF: S-15
 PROJECT NO. 2016500



STRIPING KEY	
(A) - 6" SOLID WHITE	(L) - 6" SKIP YELLOW TYP (10'-30')
(B) - 8" SOLID WHITE	(M) - 6" SKIP YELLOW TYP (6'-10')
(C) - 12" SOLID WHITE	(N) - 6" SKIP YELLOW TYP (2'-4')
(D) - 18" SOLID WHITE	(P) - RPM BI-DIRECTIONAL AMBER/AMBER
(E) - 24" SOLID WHITE	(R) - FDP WHITE
(F) - 6" SKIP WHITE TYP (10'-30')	(S) - FDP YELLOW
(G) - 6" SKIP WHITE TYP (6'-10')	(T) - RPM BI-DIRECTIONAL WHITE/RED
(H) - 6" SKIP WHITE TYP (2'-4')	(U) - RPM BI-DIRECTIONAL RED/YELLOW
(I) - 6" SOLID YELLOW	
(J) - 18" SOLID YELLOW	
(K) - 6" DOUBLE YELLOW	

DECORATIVE POST, STOP SIGN & STREET NAME SIGN TO BE RELOCATED

TO BE RELOCATED

TO BE RELOCATED

HSQ GROUP, INC.
 Engineers · Planners · Surveyors
 1001 Yamato Road, Suite 105
 Boca Raton, Florida 33431 · 561.392.0221
 C26258 · LB7924

Seal:
 Nour Shehadeh
 PE# 48307

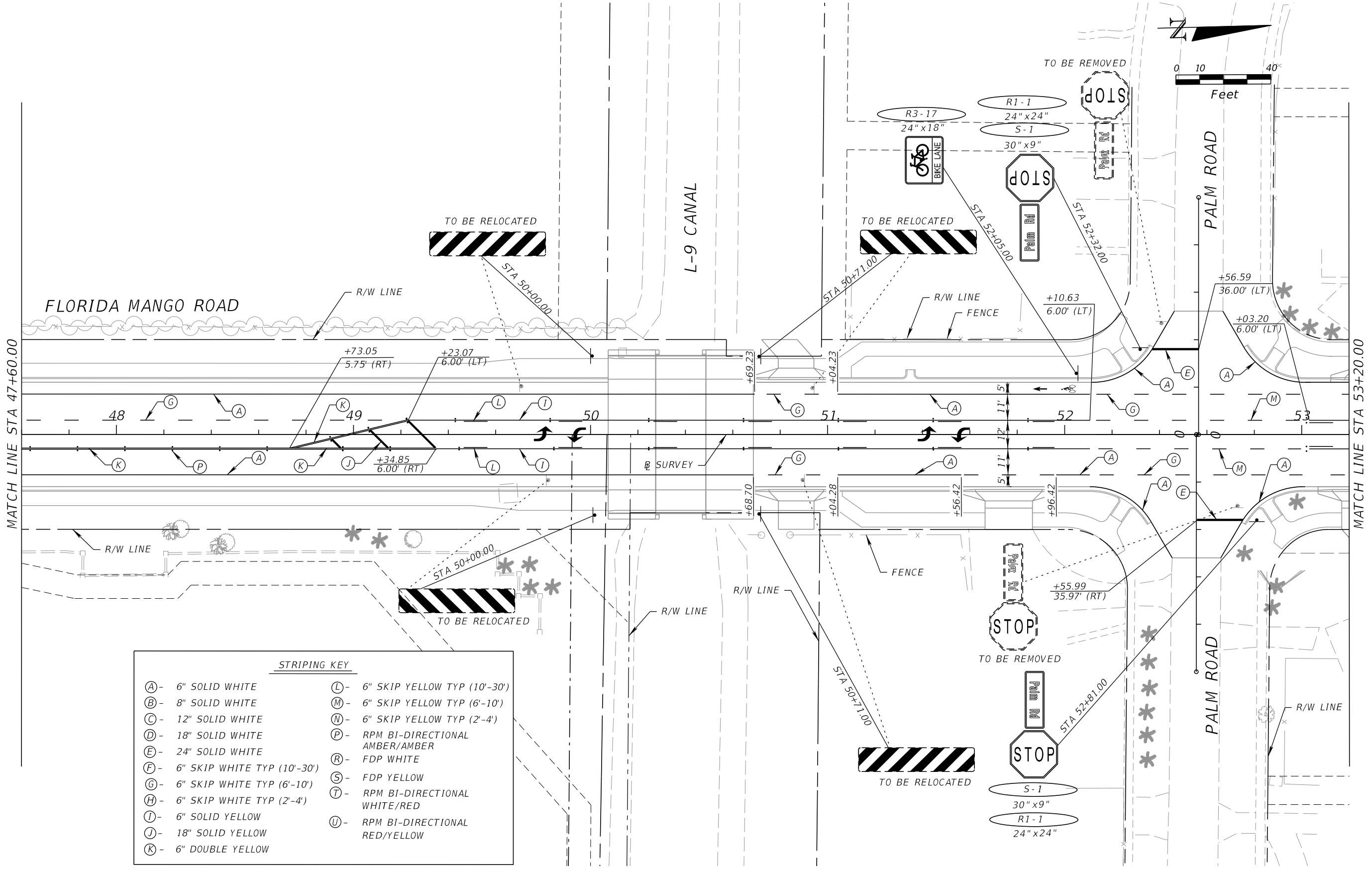
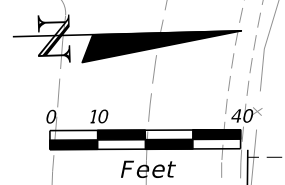
No.	Revisions	By	Date

PALM BEACH COUNTY
 ENGINEERING AND PUBLIC WORKS
ROADWAY PRODUCTION
 P.O. BOX 21229, WEST PALM BEACH, FLORIDA

SCALE: 1"=40'
 APPROVED:
 DRAWN:
 CHECKED:
 DATE:

SIGNING AND PAVEMENT MARKING PLAN

SHEET: S-11
 OF: S-15
 PROJECT NO. 2016500



STRIPING KEY

(A) - 6" SOLID WHITE	(L) - 6" SKIP YELLOW TYP (10'-30')
(B) - 8" SOLID WHITE	(M) - 6" SKIP YELLOW TYP (6'-10')
(C) - 12" SOLID WHITE	(N) - 6" SKIP YELLOW TYP (2'-4')
(D) - 18" SOLID WHITE	(P) - RPM BI-DIRECTIONAL AMBER/AMBER
(E) - 24" SOLID WHITE	(R) - FDP WHITE
(F) - 6" SKIP WHITE TYP (10'-30')	(S) - FDP YELLOW
(G) - 6" SKIP WHITE TYP (6'-10')	(T) - RPM BI-DIRECTIONAL WHITE/RED
(H) - 6" SKIP WHITE TYP (2'-4')	(U) - RPM BI-DIRECTIONAL RED/YELLOW
(I) - 6" SOLID YELLOW	
(J) - 18" SOLID YELLOW	
(K) - 6" DOUBLE YELLOW	

HSQ GROUP, INC.
 Engineers · Planners · Surveyors
 1001 Yamato Road, Suite 105
 Boca Raton, Florida 33431 · 561.392.0221
 C26258 · LB7924

Seal:
 Nour Shehadeh
 PE# 48307

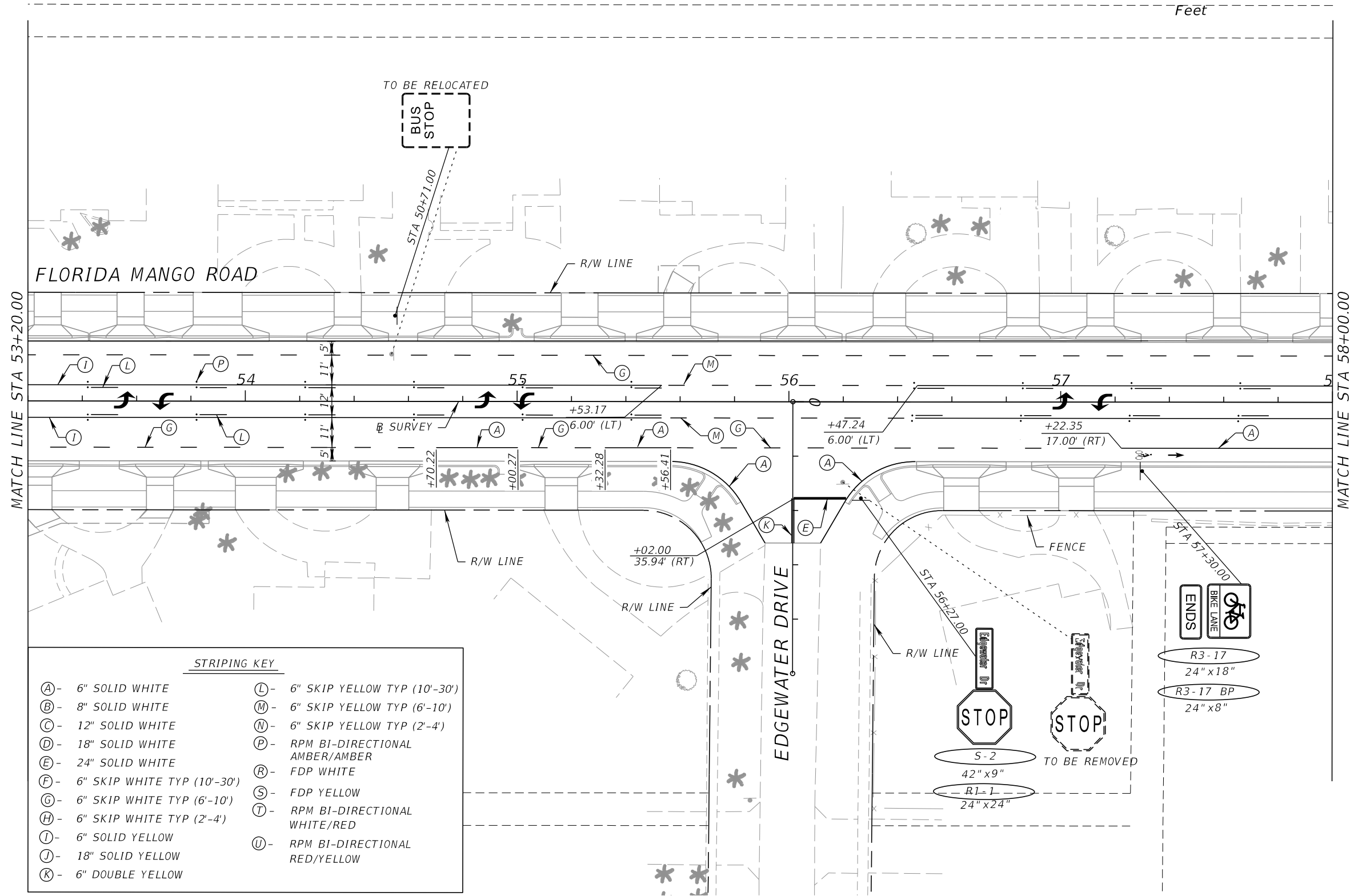
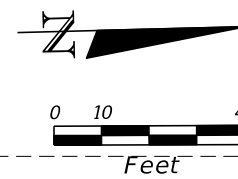
No.	Revisions	By	Date

PALM BEACH COUNTY
 ENGINEERING AND PUBLIC WORKS
ROADWAY PRODUCTION
 P.O. BOX 21229, WEST PALM BEACH, FLORIDA

SCALE: 1"=40'
 APPROVED:
 DRAWN:
 CHECKED:
 DATE:

SIGNING AND PAVEMENT MARKING PLAN

SHEET: S-12
 OF: S-15
 PROJECT NO. 2016500



STRIPING KEY

(A) - 6" SOLID WHITE	(L) - 6" SKIP YELLOW TYP (10'-30')
(B) - 8" SOLID WHITE	(M) - 6" SKIP YELLOW TYP (6'-10')
(C) - 12" SOLID WHITE	(N) - 6" SKIP YELLOW TYP (2'-4')
(D) - 18" SOLID WHITE	(P) - RPM BI-DIRECTIONAL AMBER/AMBER
(E) - 24" SOLID WHITE	(R) - FDP WHITE
(F) - 6" SKIP WHITE TYP (10'-30')	(S) - FDP YELLOW
(G) - 6" SKIP WHITE TYP (6'-10')	(T) - RPM BI-DIRECTIONAL WHITE/RED
(H) - 6" SKIP WHITE TYP (2'-4')	(U) - RPM BI-DIRECTIONAL RED/YELLOW
(I) - 6" SOLID YELLOW	
(J) - 18" SOLID YELLOW	
(K) - 6" DOUBLE YELLOW	

HSQ GROUP, INC.
 Engineers · Planners · Surveyors
 1001 Yamato Road, Suite 105
 Boca Raton, Florida 33431 · 561.392.0221
 C26258 · LB7924

Seal:
 Wour Shehadah
 PE# 48307

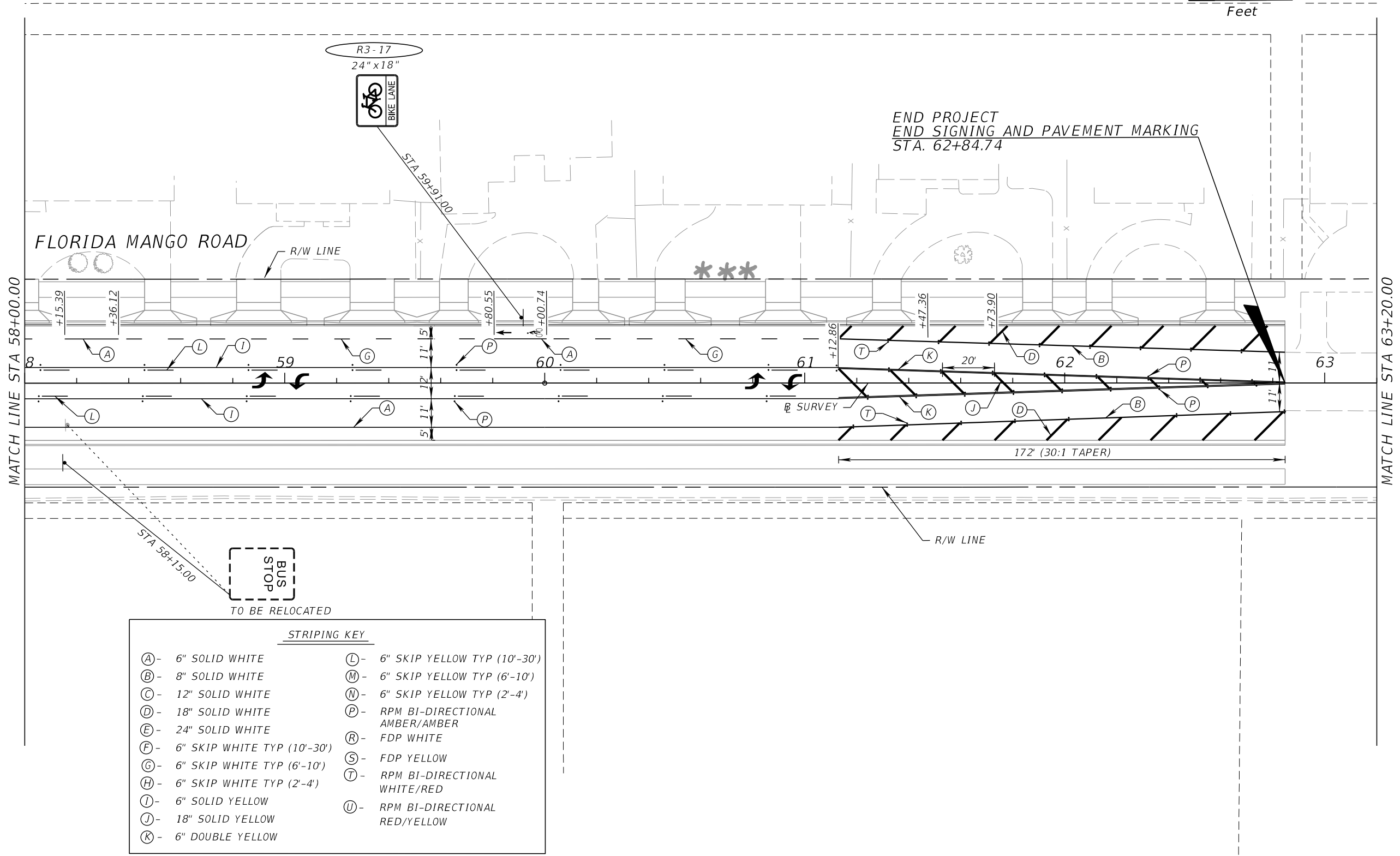
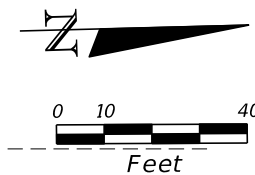
No.	Revisions	By	Date

PALM BEACH COUNTY
 ENGINEERING AND PUBLIC WORKS
ROADWAY PRODUCTION
 P.O. BOX 21229, WEST PALM BEACH, FLORIDA

SCALE: 1"=40'
 APPROVED:
 DRAWN:
 CHECKED:
 DATE:

SIGNING AND PAVEMENT MARKING PLAN

SHEET: S-13
 OF: S-15
 PROJECT NO. 2016500



STRIPING KEY

(A) - 6" SOLID WHITE	(L) - 6" SKIP YELLOW TYP (10'-30')
(B) - 8" SOLID WHITE	(M) - 6" SKIP YELLOW TYP (6'-10')
(C) - 12" SOLID WHITE	(N) - 6" SKIP YELLOW TYP (2'-4')
(D) - 18" SOLID WHITE	(P) - RPM BI-DIRECTIONAL AMBER/AMBER
(E) - 24" SOLID WHITE	(R) - FDP WHITE
(F) - 6" SKIP WHITE TYP (10'-30')	(S) - FDP YELLOW
(G) - 6" SKIP WHITE TYP (6'-10')	(T) - RPM BI-DIRECTIONAL WHITE/RED
(H) - 6" SKIP WHITE TYP (2'-4')	(U) - RPM BI-DIRECTIONAL RED/YELLOW
(I) - 6" SOLID YELLOW	
(J) - 18" SOLID YELLOW	
(K) - 6" DOUBLE YELLOW	

HSQ GROUP, INC.
 Engineers · Planners · Surveyors
 1001 Yamato Road, Suite 105
 Boca Raton, Florida 33431 · 561.392.0221
 C26258 · LB7924

Seal:
 Nour Shehadeh
 PE# 48307

No.	Revisions	By	Date

PALM BEACH COUNTY
 ENGINEERING AND PUBLIC WORKS
 ROADWAY PRODUCTION
 P.O. BOX 21229, WEST PALM BEACH, FLORIDA

SCALE: 1"=40'
 APPROVED:
 DRAWN:
 CHECKED:
 DATE:

SIGNING AND PAVEMENT MARKING PLAN

SHEET: S-14
 OF: S-15
 PROJECT NO. 2016500

