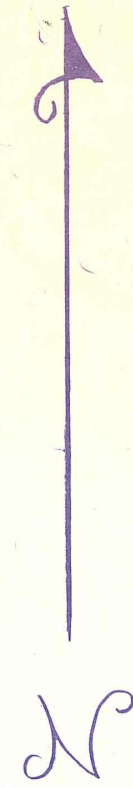


12  
LT 36



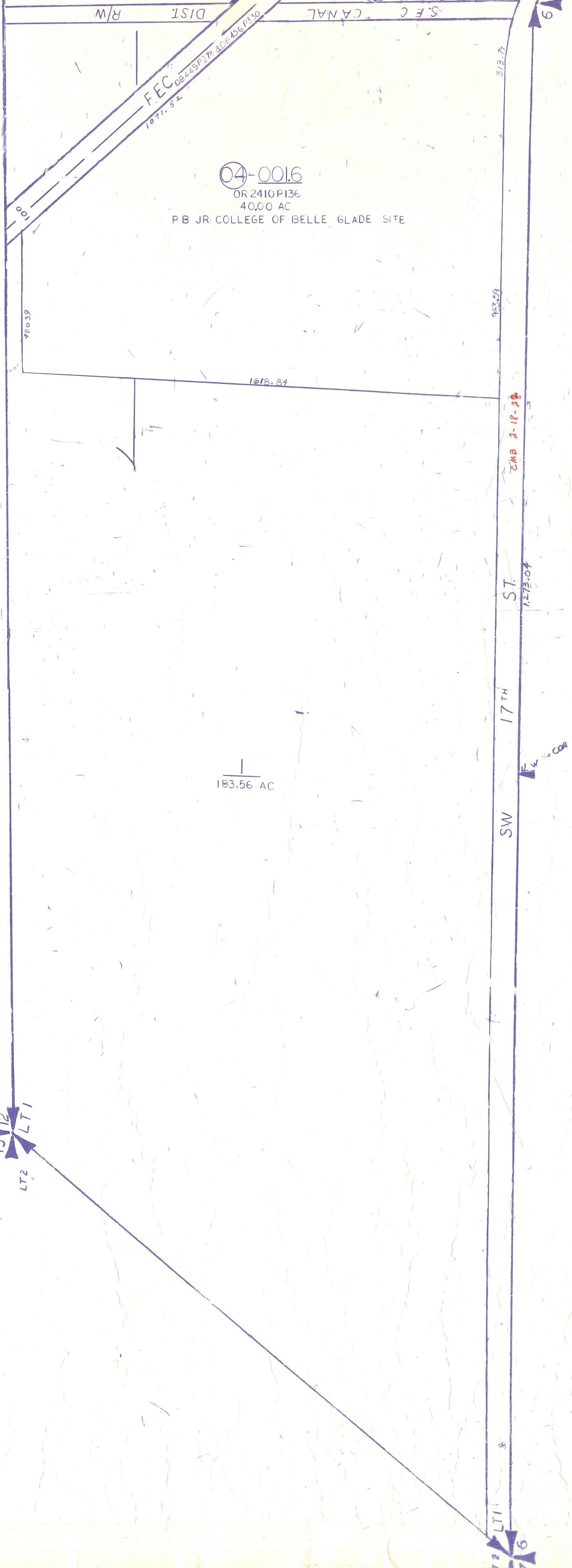
NOTE:  
NOT TO BE REPRODUCED IN  
ANY MANNER  
WITHOUT THE WRITTEN  
CONSENT OF  
PALM BEACH COUNTY

HIATUS  
LOT 1 - 44 1/2 - 36/37  
TR 37 - 44 1/2 - 42  
To  
TR 39 - 44 1/2 - 43

DATE	APPROVED

**Palm Beach County (County) makes no representation or warrants whatsoever on the attached / enclosed information reflected herein pertaining to easements, rights-of-way, setback lines, reservations, agreements, and other similar matters. The information provided herein should not be relied upon by the requesting party to confirm the existence / non-existence of facts contained herein.**

13  
LT 2  
LT 1



HIATUS CODED 37-44-37  
NOTE: HIATUS LOTS 1 TO 6 ARE ALL CODED AS SEC 37



183.56 AC