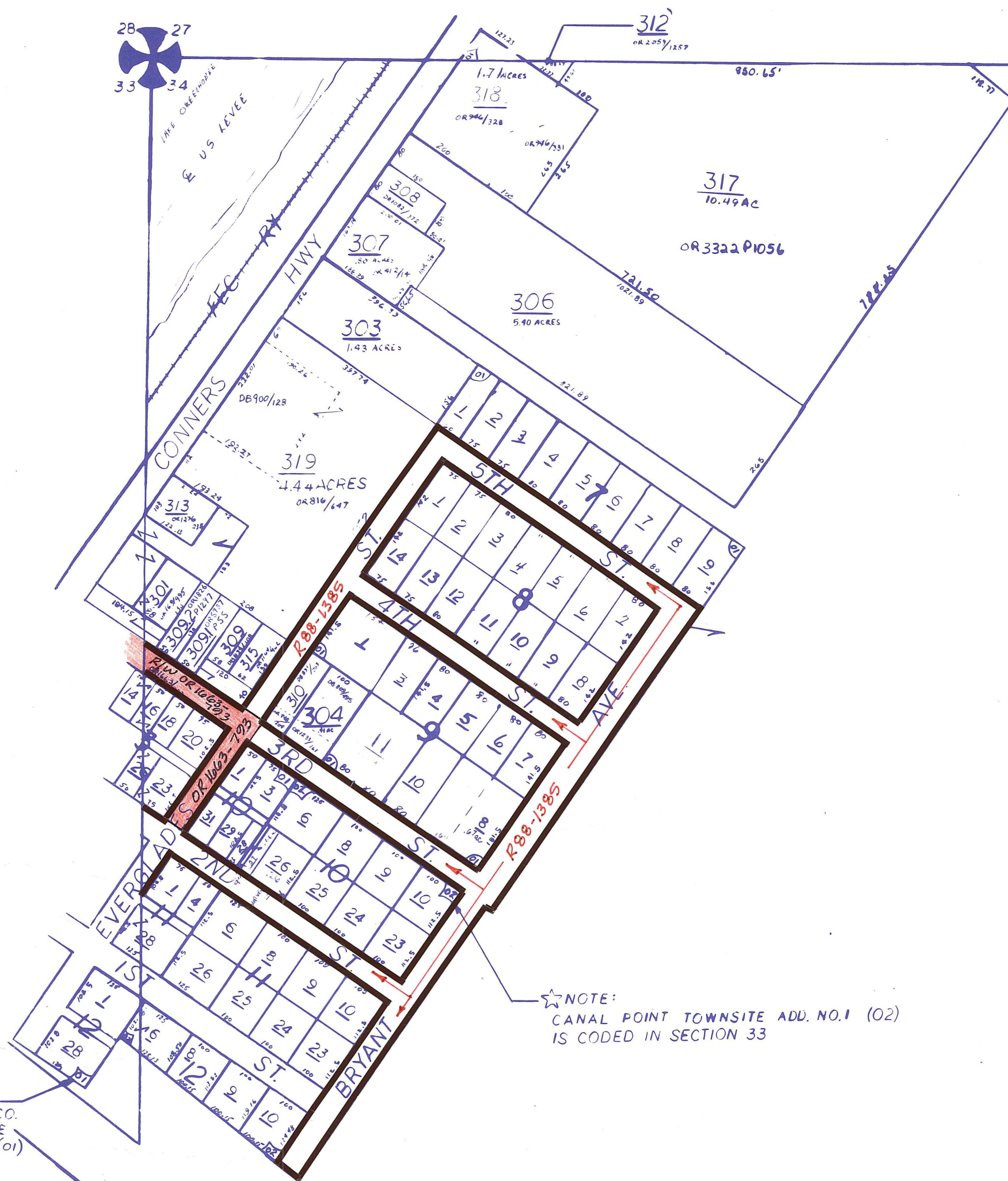


01 CANAL POINT ADDITION NO 2 PB27P118

Palm Beach County (County) makes no representation or warranties whatsoever on the attached / enclosed information reflected herein pertaining to easements, rights-of-way, setback lines, reservations, agreements, and other similar matters. The information provided herein should not be relied upon by the requesting party to confirm the existence / non-existence of facts contained herein.

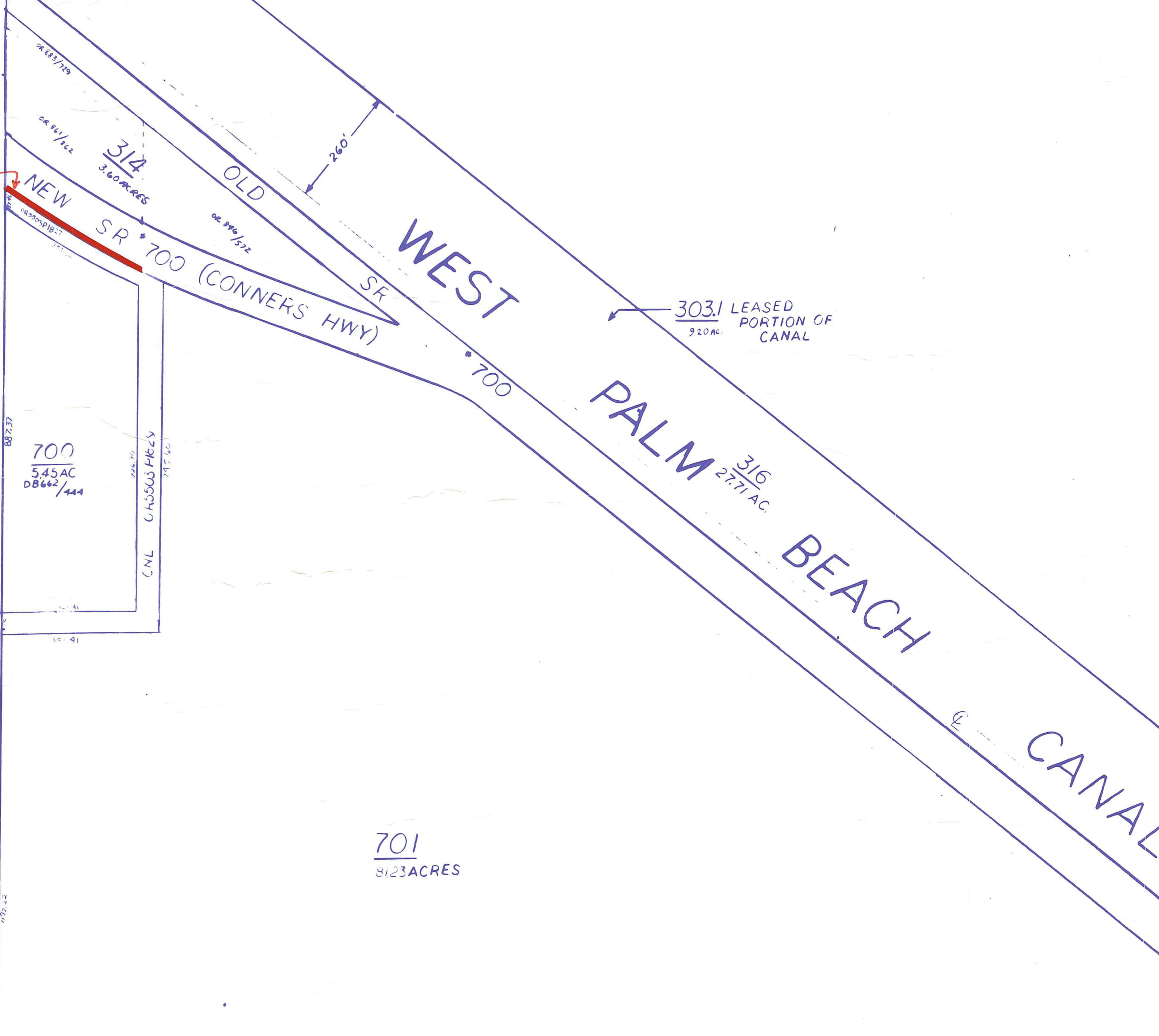


101
4.57.10 ACRES

NOTE: CANAL POINT TOWNSITE ADD. NO.1 (02) IS CODED IN SECTION 33

NOTE: PIONEER INV. CO. PL. 1 TOWNSITE CANAL POINT (01) IS CODED IN SECTION 33

(10')
OR 5'-172-
1022
FOR 2'



701
512.3 ACRES

NOTE:
NOT TO BE REPRODUCED IN ANY FORM EXCEPT BY EXPRESS WRITTEN CONSENT FROM THE PALM BEACH COUNTY PROPERTY APPRAISER
Information shown hereon is compiled from the best available sources and CANNOT be used for surveys or land transfers of any type.

PALM BEACH COUNTY
Misc. COUNTY
REBECCA E. WALKER
PROPERTY APPRAISER

RGE	TWP	SEC	AERIAL
37	41	34	NO 339
SCALE		1:200	
DRAWN BY		OLLIS 8/24/73	
UPDATED		1-25-93 CP	

CANAL POINT

LL-8

BRUNING 44-1-81 14088