

**Palm Beach County (County) makes no representation or warranties whatsoever on the attached / enclosed information reflected herein pertaining to easements, rights-of-way, setback lines, reservations, agreements, and other similar matters. The information provided herein should not be relied upon by the requesting party to confirm the existence / non-existence of facts contained herein.**

**Notes:**

- Curlee Road there are agreements to convey additional R/W to the County if or when Curlee Rd. is extended from West Sugar House Road to Duda Road. OR 4385-1400 & OR 4385-1402. (Abandonment file.)

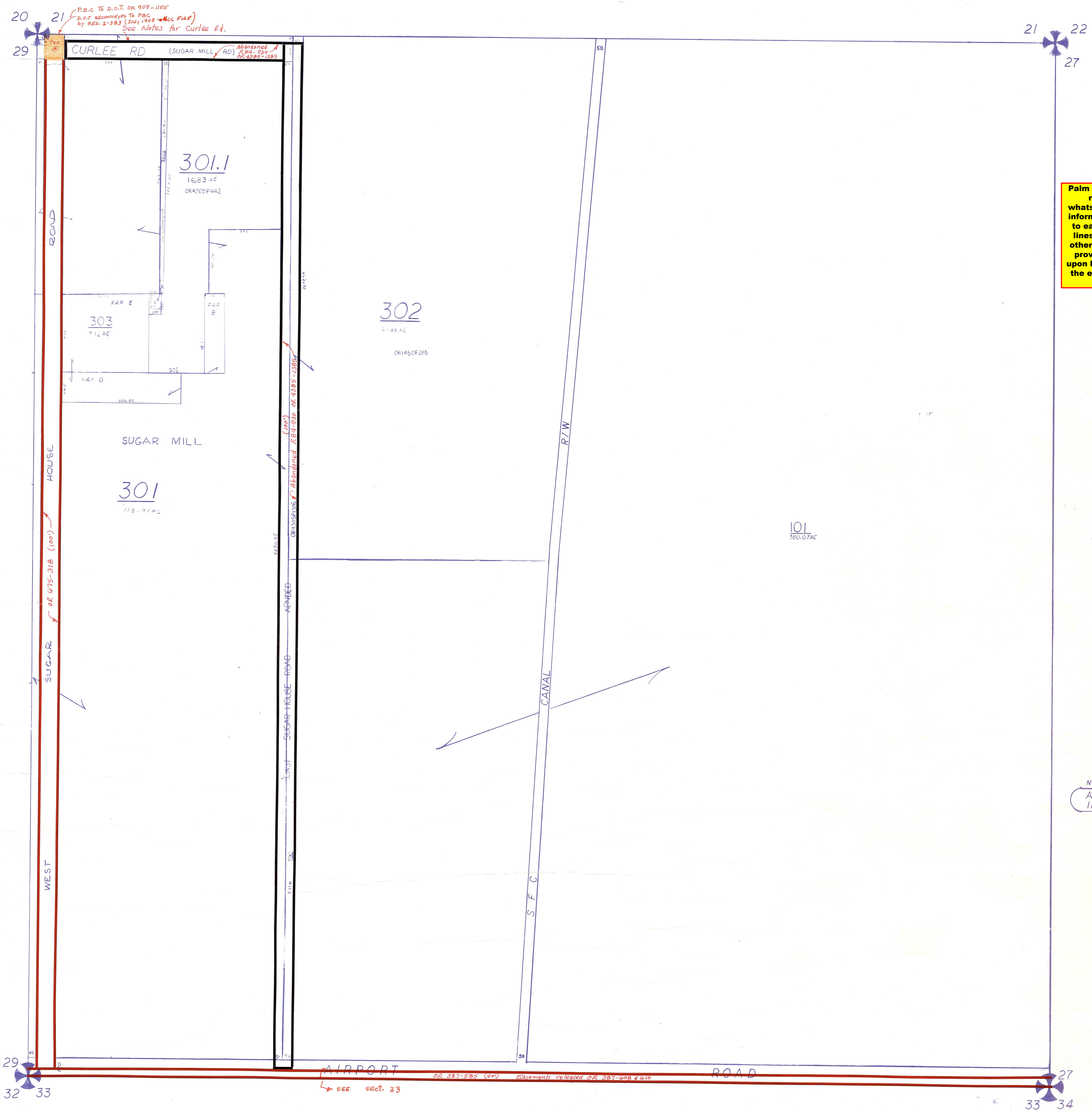
NOTE:  
ALL SEC 28  
IN COUNTY 00

NOTE:  
NOT TO BE REPRODUCED IN ANY FORM EXCEPT BY EXPRESS WRITTEN CONSENT FROM THE PALM BEACH COUNTY ASSESSOR.  
Information shown hereon is compiled from the best available sources and CANNOT be used for surveys or land transfers of any type.

MM-19

**PALM BEACH COUNTY**  
misc. REBECCA E. WALKER  
COUNTY ASSESSOR

RGE	TWP	SEC	NO	AERIAL
37	43	28		NO1257
SCALE		1"=200'		
DRAWN BY		L PRICE 10-18-73		
UPDATED		7-23-85 JYJ		



P.B.C. TO D.O.T. OR 907-1150  
D.O.T. RECONVEYED TO P.B.C.  
BY RES. 2-383 (2004-1968 - Misc File)  
See Notes for Curlee Rd.

Abandoned  
OR 4709-200  
OR 4709-205

301.1

16.83 AC  
OR4709P442

303

7.12 AC

302

5.44 AC  
OR1450F265

301

115.91 AC

101

380.07 AC

OR 387-885 (50') Easement released OR 387-888 & 810

SEE sect. 23

BRUNING 44141.1408