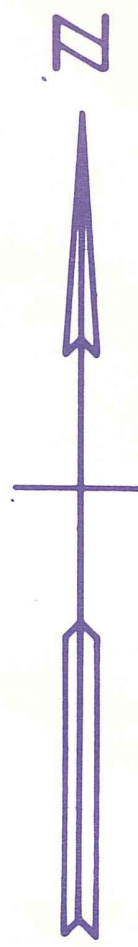


24 19

25

19 20

29



SE 01 HOOVER PARK PB16P20

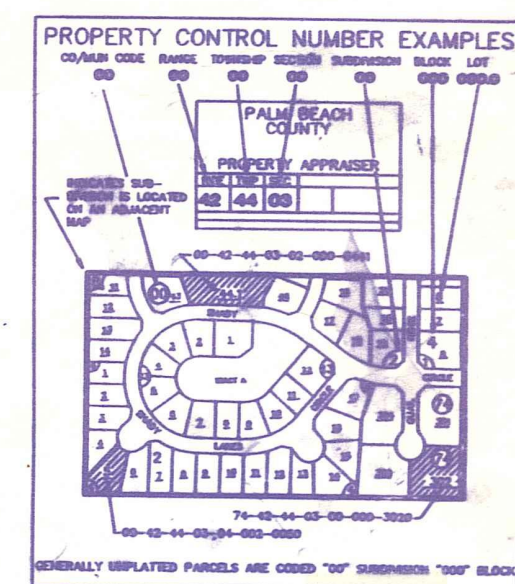
NOTE
NOT TO SCALE

Palm Beach County (County) makes no representation or warranties whatsoever on the attached / enclosed information reflected herein pertaining to easements, rights-of-way, setback lines, reservations, agreements, and other similar matters. The information provided herein should not be relied upon by the requesting party to confirm the existence / non-existence of facts contained herein.

NOTE:
PART OF SOUTH 1/2 IN BELLE GLADE 04
REMAINDER IN COUNTY 00

NOTE:
NOT TO BE REPRODUCED IN
ANY FORM EXCEPT BY EXPRESS
WRITTEN CONSENT FROM THE
PALM BEACH COUNTY
PROPERTY APPRAISER

Information shown hereon is
compiled from the best available
sources and CANNOT be used
for surveys or land transfers of
any type.

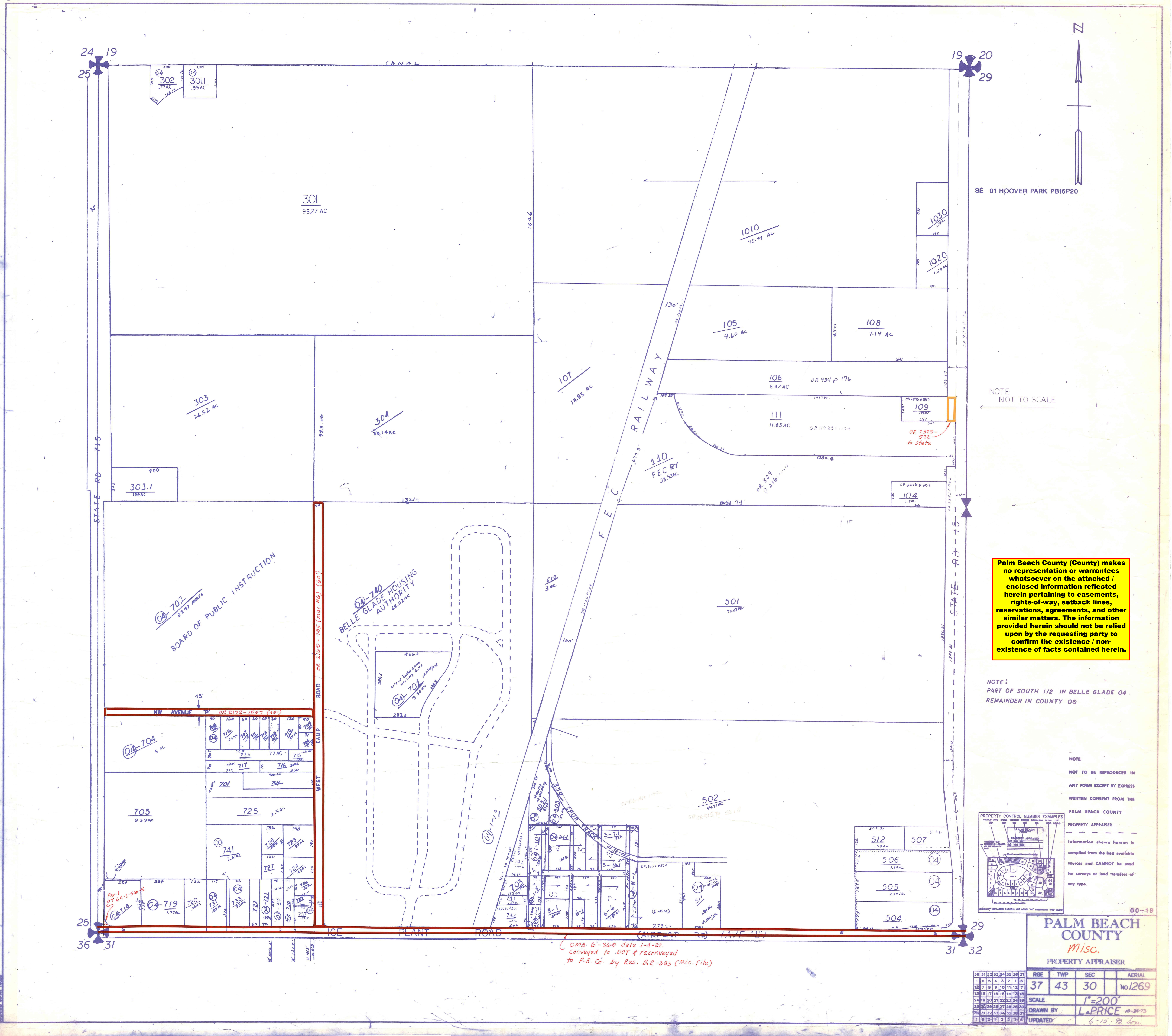


00-19

PALM BEACH COUNTY
Misc.
PROPERTY APPRAISER

36	31	32	33	34	35	36	31	RGE	TWP	SEC	AERIAL
1	8	5	4	3	2	1	6	37	43	30	No/269
2	7	8	9	10	11	12	7	SCALE	1"=200'		
3	6	17	16	15	14	13	18	DRAWN BY	L. PRICE 10-24-73		
4	5	20	21	22	23	24	19	UPDATED	6-15-92 Jcm		
5	4	3	2	1	2	3	4				

CMB 6-300 date 1-4-22
conveyed to DOT & reconveyed
to P.B. Co. by Res. 8.2-383 (McC. File)



04-702
BOARD OF PUBLIC INSTRUCTION
37.97 ACES

04-740
BELLE GLADE HOUSING
AUTHORITY
68.02 AC

