

Palm Beach County (County) makes no representation or warranties whatsoever on the attached / enclosed information reflected herein pertaining to easements, rights-of-way, setback lines, reservations, agreements, and other similar matters. The information provided herein should not be relied upon by the requesting party to confirm the existence / non-existence of facts contained herein.

NW 01 SUGAR SUB (04)
 NW 02 PARK ESTATES (1981) PB39 P29 (04)
 SE 03 PALM GLADE DEV PLD PHS A & B (90) PB62P83 (00)

PT OF SEC CODED IN (00) & (04)

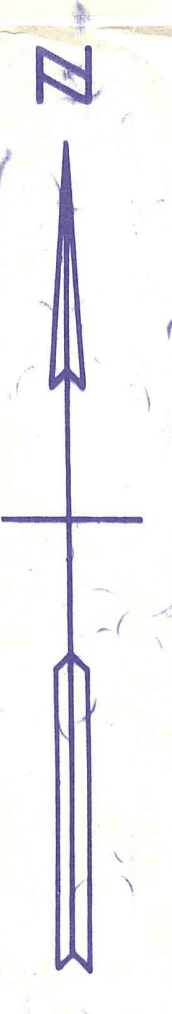
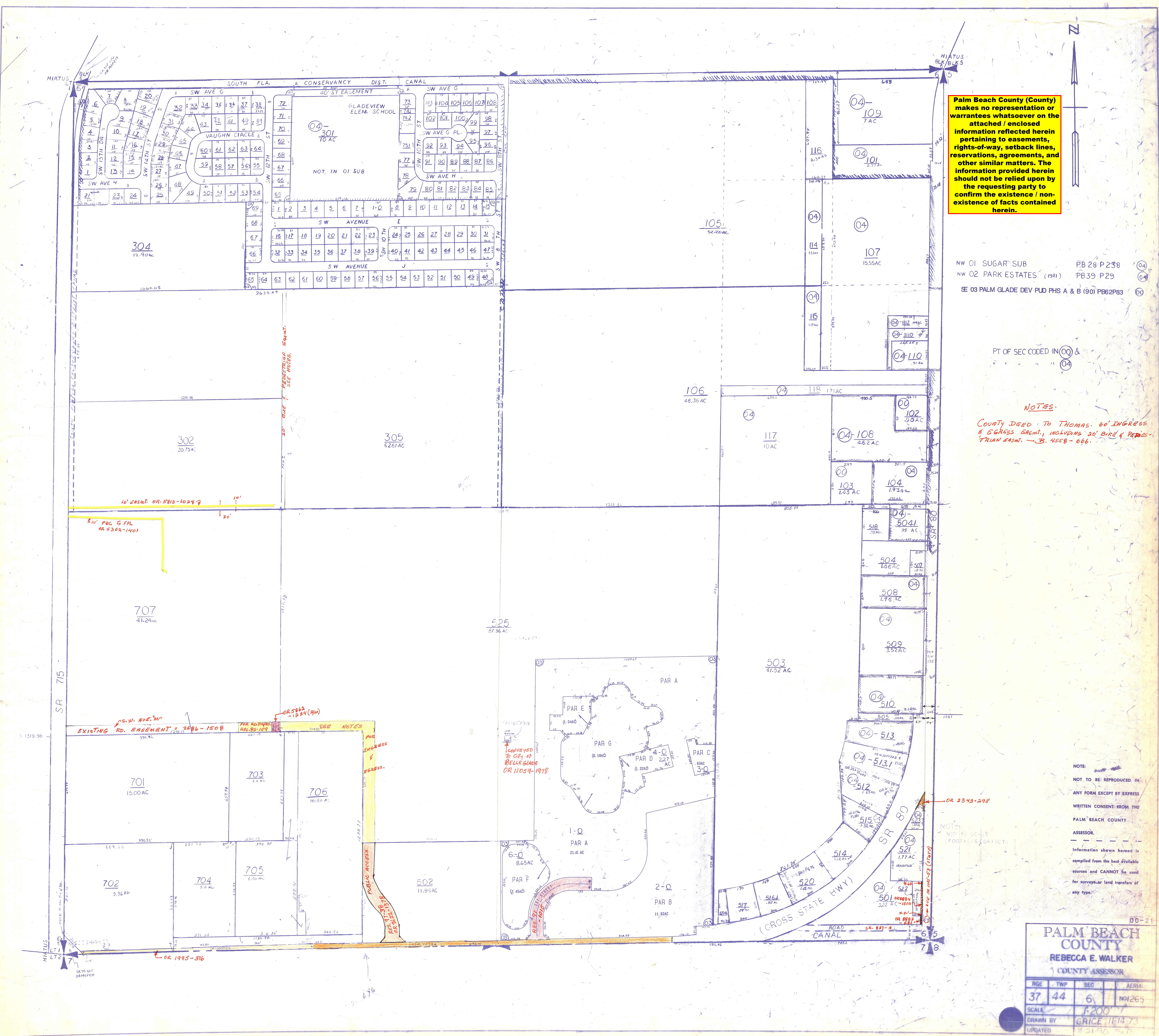
NOTES:

COUNTY DEED TO THOMAS. 60' INGRESS & EGRESS EASEM., INCLUDING 20' DRIVE & REVERSE TRIAN EASEM. - B. 4558-666.

NOTE:
 NOT TO BE REPRODUCED IN ANY FORM EXCEPT BY EXPRESS WRITTEN CONSENT FROM THE PALM BEACH COUNTY ASSESSOR.
 Information shown hereon is compiled from the best available sources and CANNOT be used for surveys or land transfers of any type.

PALM BEACH COUNTY
REBECCA E. WALKER
 COUNTY ASSESSOR

RGE	TWP	SEC	AERIAL
37	44	6	N01265
SCALE			1:200
DRAWN BY			GRICE 11/14/73
UPDATED			8/21/80



HIATUS

HIATUS

SR 715

OR 2343-298

OR 1995-316

CONVEYED TO CITY OF BELLE GLADE OR 11059-1978

20' DRIVE & EGRESS EASEMENT. SEE NOTES.

EXISTING RD. EASEMENT 2886-1508

SW W. AVE. M

OR 5862 - 1504 (HW)

FOR ADJUSTMENT 1462-892-1079

SEE NOTES

FOR INGRESS & EGRESS.

PUBLIC ACCESS

OR 1125-1315

OR 9125-1315

OR 9125-1315

OR 9125-1315

OR 9125-1315

OR 9125-1315

OR 9125-1315

OR 9125-1315

NOT TO SCALE (FOOTALLS CORRECT)