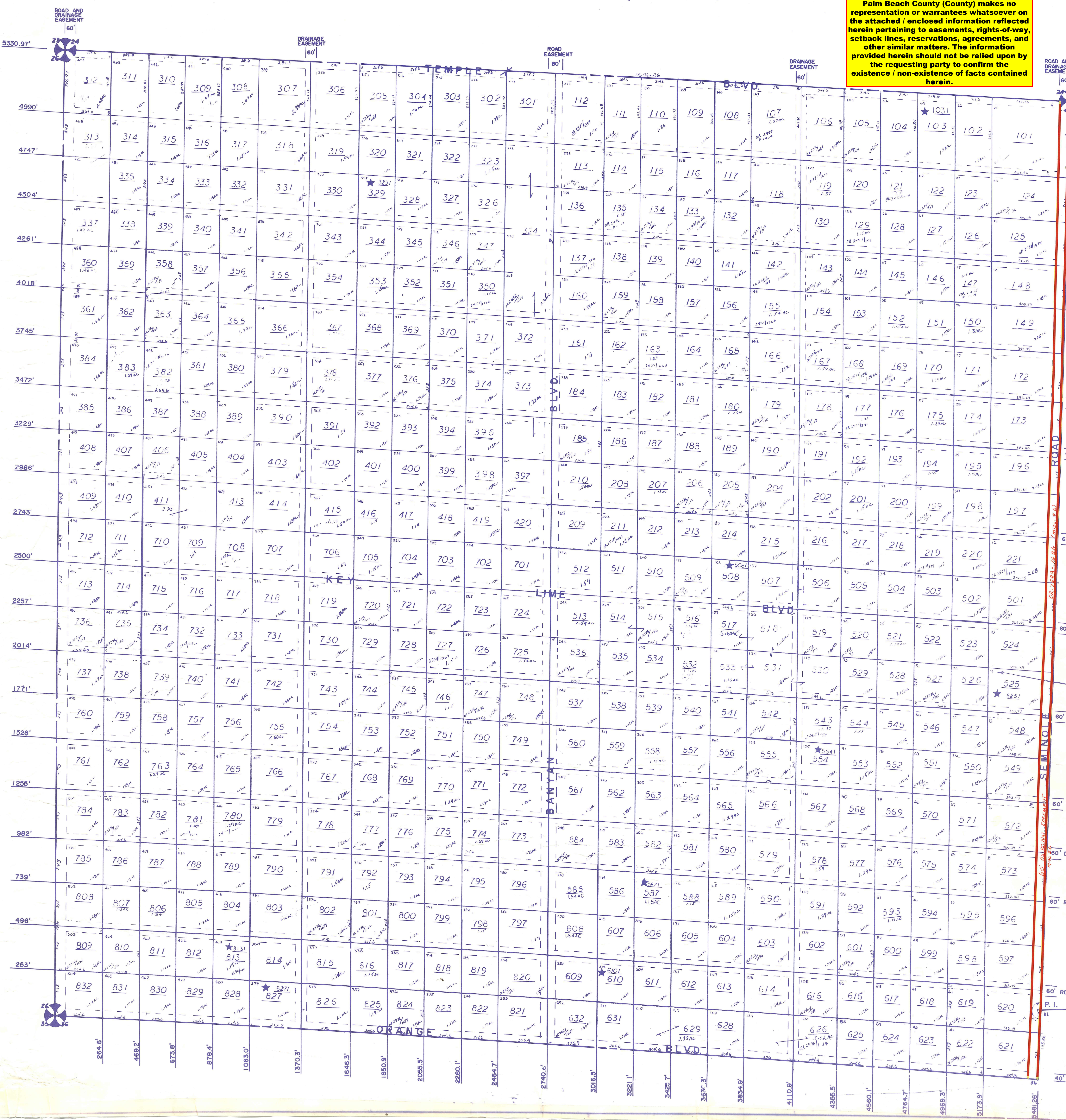


Palm Beach County (County) makes no representation or warranties whatsoever on the attached / enclosed information reflected herein pertaining to easements, rights-of-way, setback lines, reservations, agreements, and other similar matters. The information provided herein should not be relied upon by the requesting party to confirm the existence / non-existence of facts contained herein.



LEGAL DESCRIPTION EXAMPLES

1/2	1/2	1/2	1/2
1/2	1/2	1/2	1/2
1/2	1/2	1/2	1/2
1/2	1/2	1/2	1/2

ALL OF SECTION IS IN THE COUNTY AND CODED 00.

ALL TRACT DESCRIPTIONS ARE AS MEASURED PARALLEL TO THE WEST AND SOUTH SECTION LINES.

NOTE: ROYAL PALM BEACH COLONY INC. LOT NUMBER SHOWN IN UPPER LEFT CORNER OF EACH LOT PARCEL CODE FOR R.P.B.C. INC. - "I"

36	31	32	33	34	35	36
1	6	5	4	3	2	1
12	7	8	9	10	11	12
13	18	17	16	15	14	13
24	19	20	21	22	23	24
25	30	29	28	27	26	25
36	31	32	33	34	35	36
1	6	5	4	3	2	1

★UND 1/2 INT IN GAS, OIL & MIN RGTS

NOTE: NOT TO BE REPRODUCED IN ANY FORM EXCEPT BY EXPRESS WRITTEN CONSENT FROM THE PALM BEACH COUNTY PROPERTY APPRAISER. Information shown herein is compiled from the best available sources and CANNOT be used for surveys or land transfers of any type.

PALM BEACH COUNTY
GARY R. NIKOLITS
 PROPERTY APPRAISER

RGE	TWP	SEC	AERIA
40	42	25	NO 18-15

SCALE 1" = 200'
 DRAWN BY B. PALUSKA 8/2/75
 D. SELLERS 10/12/78
 UPDATED 3/25/99