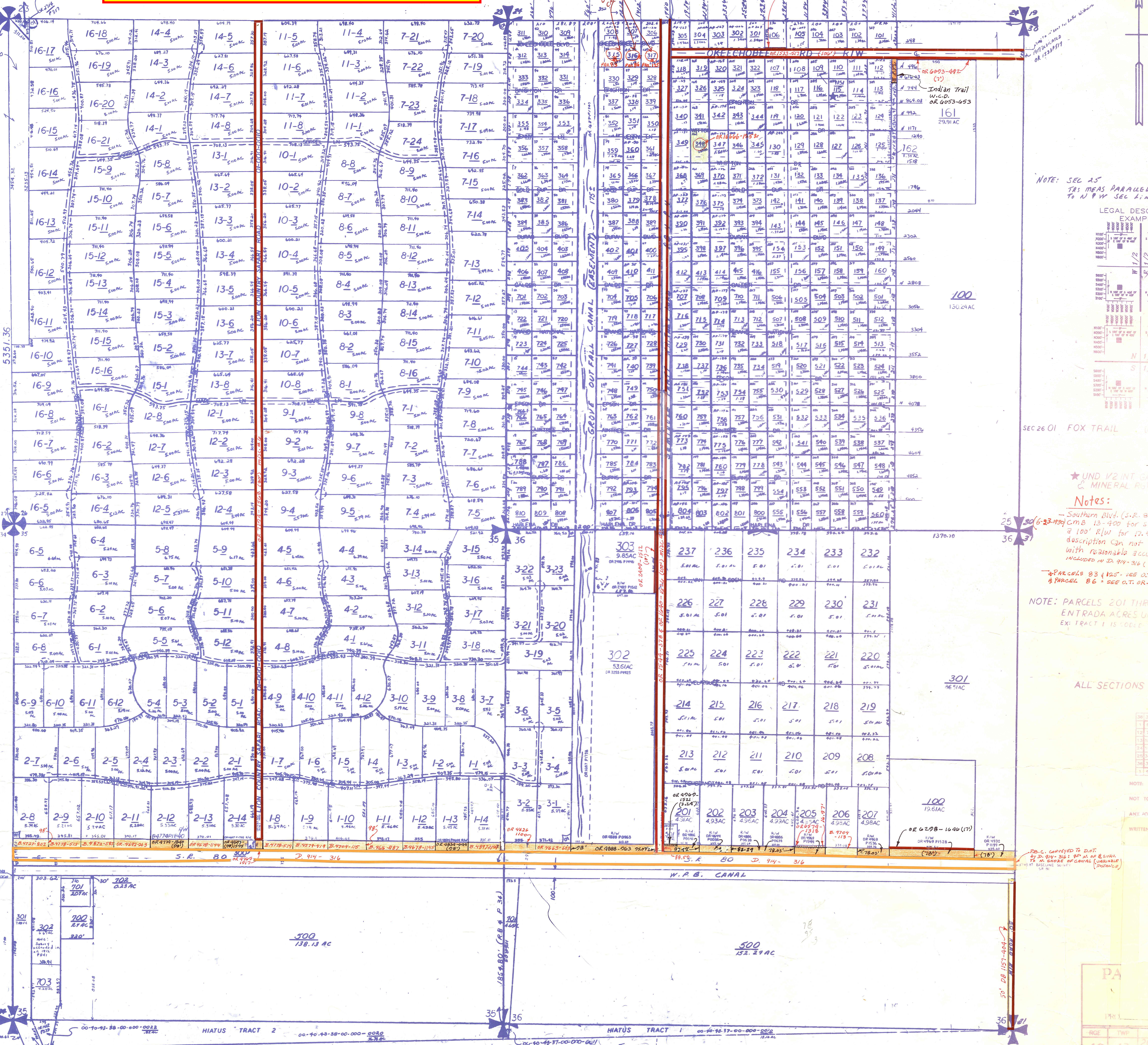


Palm Beach County (County) makes no representation or warranties whatsoever on the attached / enclosed information reflected herein pertaining to easements, rights-of-way, setback lines, reservations, agreements, and other similar matters. The information provided herein should not be relied upon by the requesting party to confirm the existence / non-existence of facts contained herein.

RR.B.C. - SEC 'AP'



LEGAL DESCRIPTION TYPICAL BREAKDOWNS

1/2	E. 1/2
N 1/2	
S 1/2	
1/2	NE-1/2
1/2	SE-1/2
1/4	NE-1/4
1/4	NW-1/4
1/4	SE-1/4
1/4	SW-1/4
1/4	NE-1/4
1/4	NW-1/4
1/4	SE-1/4
1/4	SW-1/4

NOTE: SEC 25 TRS MEAS PARALLEL TO N & W SEC LINES

LEGAL DESCRIPTION EXAMPLES

1/2	E. 1/2
N 1/2	
S 1/2	
1/2	NE-1/2
1/2	SE-1/2
1/4	NE-1/4
1/4	NW-1/4
1/4	SE-1/4
1/4	SW-1/4
1/4	NE-1/4
1/4	NW-1/4
1/4	SE-1/4
1/4	SW-1/4

SEC 26 01 FOX TRAIL (1978) 2831

Notes:
 - Southern Blvd. (S.R. 80) Please Note: CMS 13-400 for S.R. 80 describes a 100' R/W for 17.4 miles. The description can not be plotted with reasonable accuracy - area included in D.A. 94-316 (R.O.C. to D.O.T.)
 - PARCELS 83 & 125 - SEE O.T. OR 8557-710
 & PARCEL 86 - SEE O.T. OR 8557-710

NOTE: PARCELS 201 THRU 237 ENTRADA ACRES UNREC. OR EX: TRACT 1 IS CODED 201

ALL SECTIONS IN COUNTY

NOT TO BE REPRODUCED IN ANY FORM EXCEPT BY EXPRESS WRITTEN CONSENT FROM THE

PA			
1911			
RGE	TWP	SE	SW
40	43	20	10
SCALE	1" = 400'		
DRAWN BY			
UPDATED			

25-43-41
 01
 25-43-41