

Notes:
 - Southern Blvd. (S.R. 80) Please Note:
 (6-30-13) CMB 13-490 for S.R. 80 describes
 a 100' R/W for 17.4 miles. The
 description can not be plotted with
 reasonable accuracy - INCLUDED IN
 AREA CONVEYED TO D. 914-316

Palm Beach County (County) makes no representation or warranties whatsoever on the attached / enclosed information reflected herein pertaining to easements, rights-of-way, setback lines, reservations, agreements, and other similar matters. The information provided herein should not be relied upon by the requesting party to confirm the existence / non-existence of facts contained herein.

NOTE: ALL OF SECTIONS ARE IN THE COUNTY CODED 00

NOTE
 NOT TO BE REPRODUCED IN ANY FORM EXCEPT BY EXPRESS WRITTEN CONSENT FROM THE PALM BEACH COUNTY PROPERTY APPRAISER
 Information shown hereon is compiled from the best available sources and CANNOT be used for surveys or land transfers of any type.

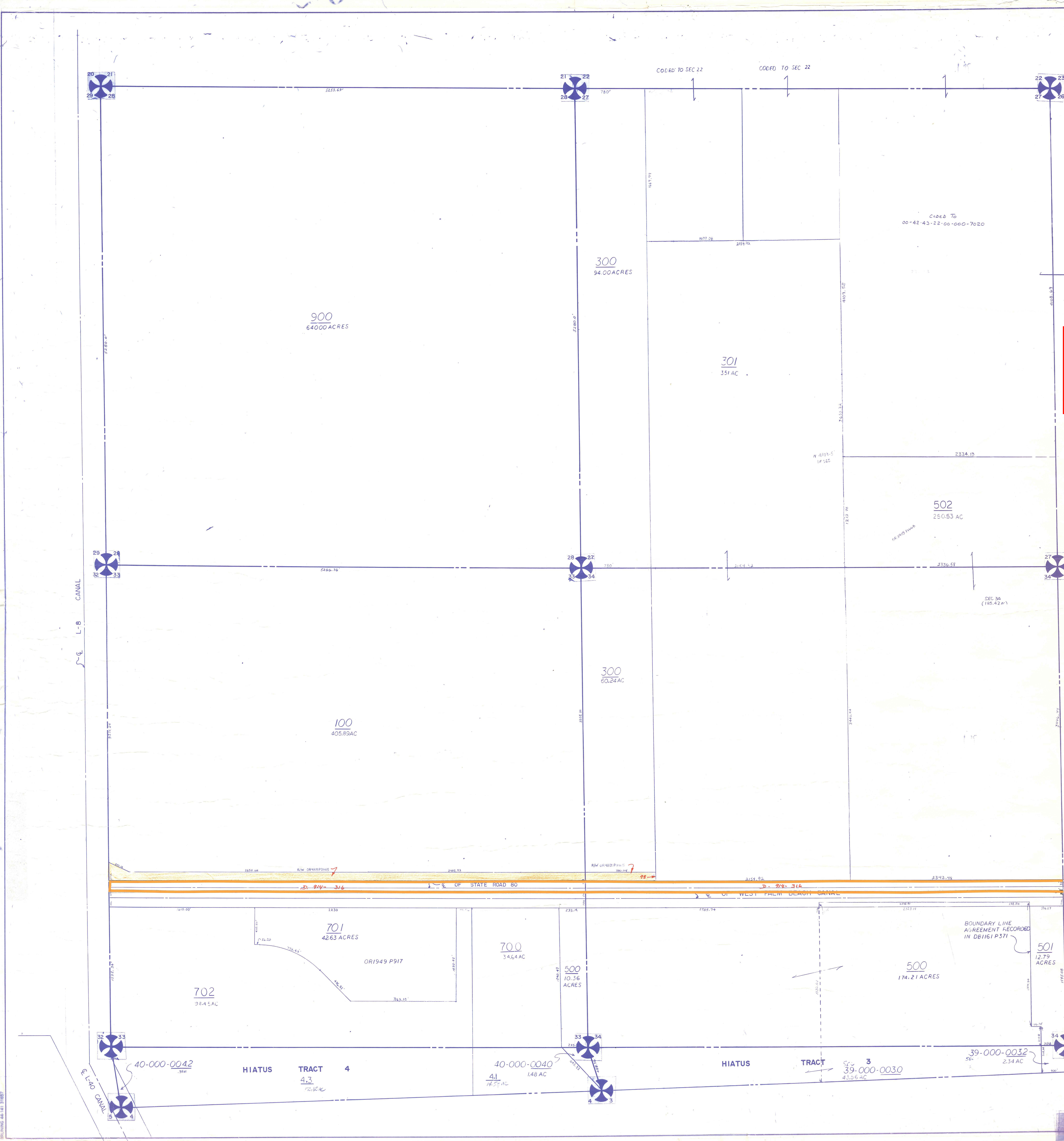
D. 914-316
 P.B.C. TO D. 914-316
 25' W. OF S. BLVD.
 TO N. EDGE OF CANAL
 (VARIABLE WIDTH)

U-19 T-19
 U-20 T-20

PALM BEACH COUNTY
 REBECCA E. WALKER
 PROPERTY APPRAISER

RGE	TWP	SEC	AERIAL
40	43	28 33 40	NO 17-6B

SCALE 1"=400'
 DRAWN BY D.L.L.S. 4-12-78
 UPDATED



BRUNING AND SIBERT