

**Notes:**

- Southern Blvd. (S.R. 80) Please Note:  
(6-30-1930) CMB 13-490 for S.R. 80 Describes  
a 100' R/W for 17.4 miles. The  
description cannot be plotted with  
reasonable accuracy. - to D.O.T.  
SR 80 - 816

- TWENTY MILE BEND BOAT DOCK ROAD:  
SECT 31 & 32: MAINTAINED BY R.B.C.  
AS RES. 88 - 1985.

Ⓢ ALL THESE ROADS FOR JURISDICTIONAL TRANSFER: STATE  
- SR 880 (OLD SR 80): FROM NW 1/4 IN BALLEGADE TO COUNTY  
SR 700.  
- SR 880 : FROM SR 700 TO SR 80  
- SR 700 (CONNERS HWY): FROM SR 880 TO 4.287  
MILES NORTH OF SR 880  
- SR 700 (CONNERS HWY): 4.287 MILES NORTH OF  
SR 880 TO SR 80  
AS LETTER DATED AUGUST 14, 1984 (ON RECORDS  
PAGE)

**Palm Beach County (County) makes no representation or warrants whatsoever on the attached / enclosed information reflected herein pertaining to easements, rights-of-way, setback lines, reservations, agreements, and other similar matters. The information provided herein should not be relied upon by the requesting party to confirm the existence / non-existence of facts contained herein.**

ALL OF SECTIONS ARE  
CODED IN THE COUNTY  
(00)

36	31	32	33	34	35	36	31
1	2	3	4	5	6	7	8
12	13	14	15	16	17	18	19
24	25	26	27	28	29	30	31
36	37	38	39	40	41	42	43
1	2	3	4	5	6	7	8

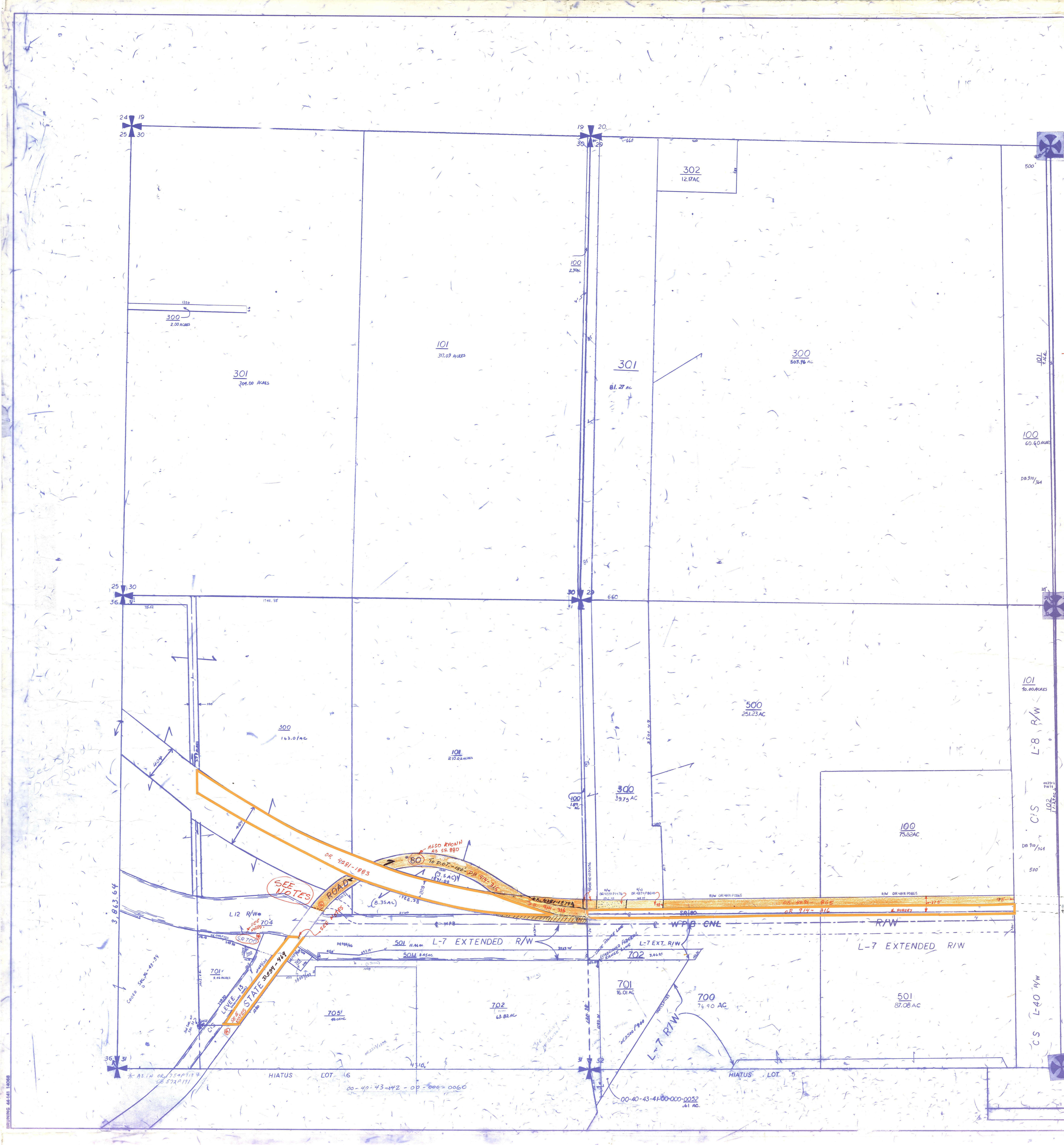
NOTE:  
NOT TO BE REPRODUCED IN  
ANY FORM EXCEPT BY EXPRESS  
WRITTEN CONSENT FROM THE  
PALM BEACH COUNTY  
ASSESSOR.  
Information shown hereon is  
compiled from the best available  
sources and CANNOT be used  
for surveys or land transfers of  
any type.

W-19 V-19  
W-20 V-20

**PALM BEACH COUNTY**

MISC PROPERTY APPRAISER

REG	TWP	SEC	AERIAL
40	43	30129 31132	NO 438
SCALE		1"=400'	
DRAWN BY		OLLIS 4/8/03	
UPDATED		3/25/02 WMS	



BRUNING 44-141 1:0000