

MARTIN COUNTY



LEGAL DESCRIPTION SECTIONAL BREAKDOWN

W 1/2	E 1/2
N 1/2	
S 1/2	
NW 1/4	NE 1/4
SW 1/4	SE 1/4

OI PHILO FARMS - PB 3 P. 11

Palm Beach County (County) makes no representation or warrants whatsoever on the attached / enclosed information reflected herein pertaining to easements, rights-of-way, setback lines, reservations, agreements, and other similar matters. The information provided herein should not be relied upon by the requesting party to confirm the existence / non-existence of facts contained herein.

ALL OF SECTION IN COUNTY-00

NOTE:

NOT TO BE REPRODUCED IN ANY FORM EXCEPT BY EXPRESS WRITTEN CONSENT FROM THE PALM BEACH COUNTY ASSESSOR.

Information shown hereon is compiled from the best available sources and CANNOT be used for surveys or land transfers of any type.

PALM BEACH COUNTY
2

PROPERTY APPRAISER

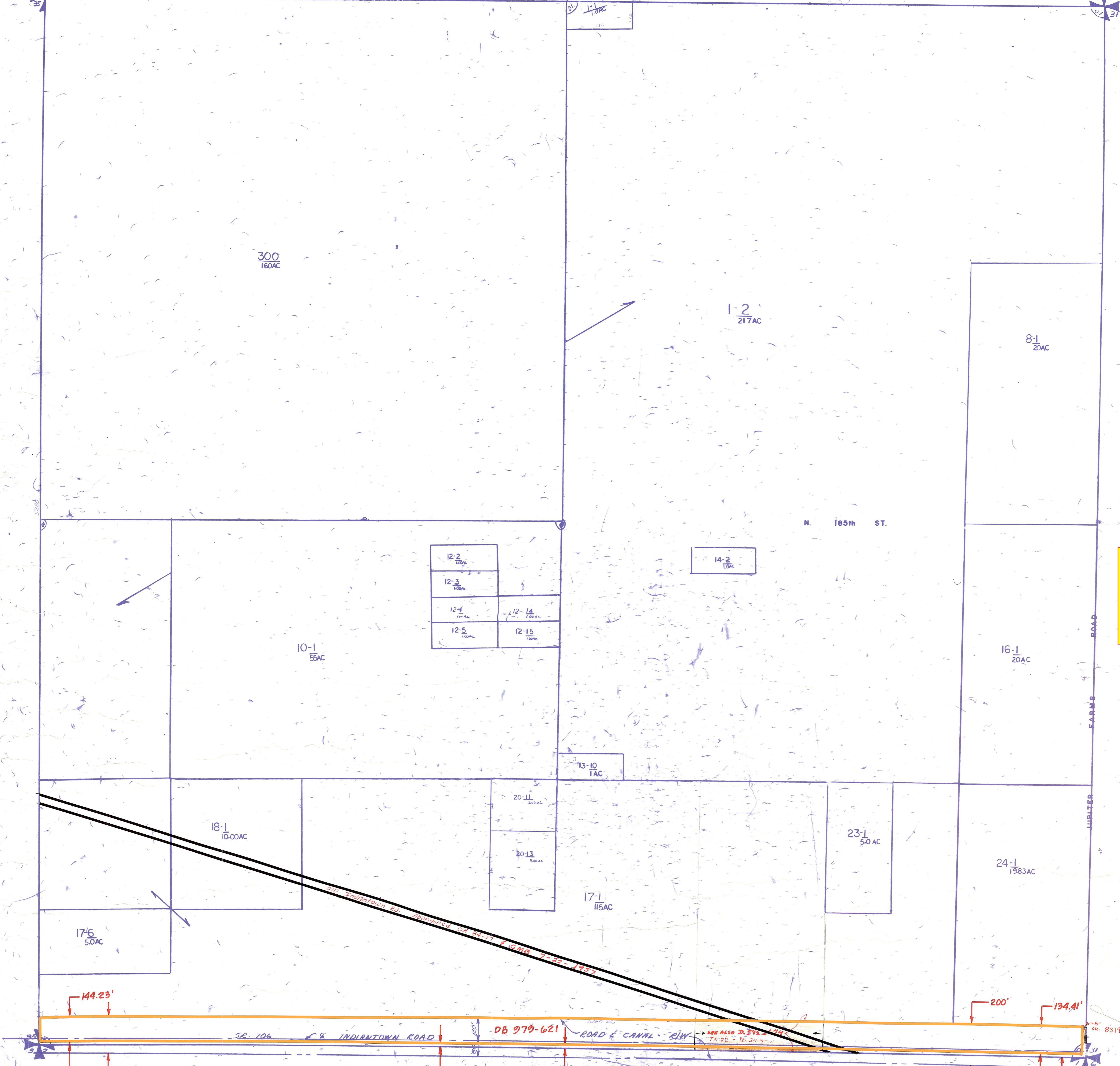
RGE	TWP	SEC	AERIAL
41	40	36	NO59-122

SCALE 1"=200'

DRAWN BY M. ADAMS

UPDATED 1/93

56	51	52	53	54	50	50	51	5
1	8	9	4	3	2	1	6	
12	7	8	9	10	11	12	7	
13	18	17	18	19	14	13	18	
24	19	20	21	22	23	24	19	
25	30	29	28	27	28	29	30	
34	31	32	33	34	35	36	31	
1	1	1	1	1	1	1	1	



L-2