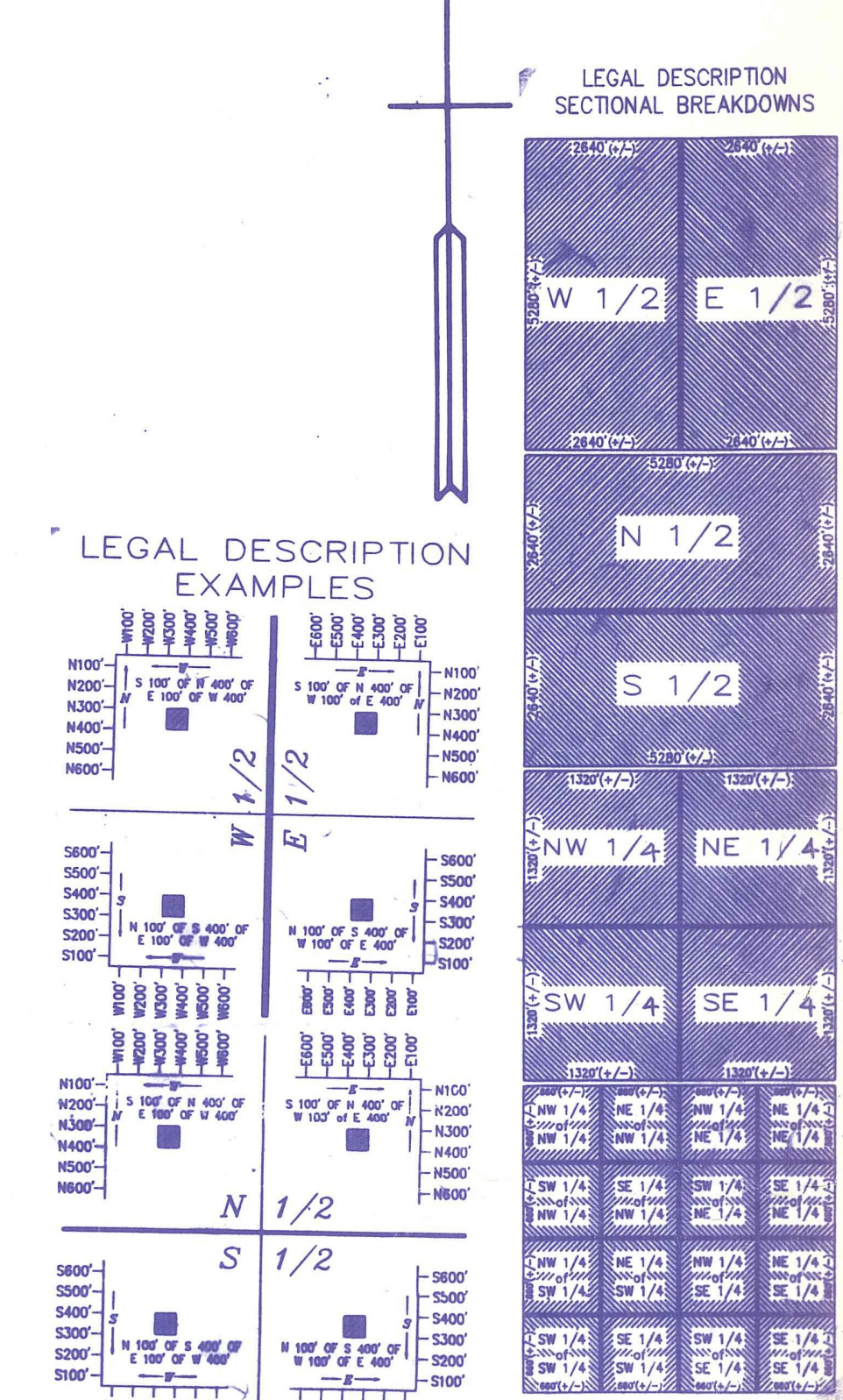


THIS POINT IS
402.18 FT FROM SW CORNER
OF NW 1/4 PER
OR 2540 P1561
403.65' PER OR 6491 P 784

OR 24-7110-CR 1517 P1550
INDICATE 1/4 41 LEAVES
PT OF SW SW SW NW 5 OF
5 SAME



NOTE:
PT OF SEC CODED IN DD TM &
PT OF SEC CODED IN DD TD

Palm Beach County (County) makes no representation or warranties whatsoever on the attached / enclosed information reflected herein pertaining to easements, rights-of-way, setback lines, reservations, agreements, and other similar matters. The information provided herein should not be relied upon by the requesting party to confirm the existence / non-existence of facts contained herein.

NOTE:
ALL ROAD EASEMENTS 60' OR AS NOTED
LIMITED SECTION DATA
ACREAGE ON CUT-OUT PARCELS PER DEEDS
ALL OF SECTION IN COUNTY - (00)

NOTE:
NOT TO BE REPRODUCED IN
ANY FORM EXCEPT BY EXPRESS
WRITTEN CONSENT FROM THE
PALM BEACH COUNTY
PROPERTY APPRAISER
Information shown hereon is
compiled from the best available
sources and CANNOT be used
for surveys or land transfers of
any type.

PALM BEACH COUNTY
misc.
PROPERTY APPRAISER

RGE	TWP	SEC	AERIAL
41	41	14	NO 38 - 12

SCALE 1" = 200'
DRAWN BY MC ADAMS 12-5-74
UPDATED 06-05-92

PALM BEACH COUNTRY ESTATES SECTION "C"

38	31	32	33	34	35	36	37
1	8	5	4	3	2	1	8
12	7	8	9	10	11	12	7
13	18	17	16	15	14	13	18
24	19	20	21	22	23	24	19
25	26	27	28	29	30	25	26
38	31	32	33	34	35	36	37
1	8	5	4	3	2	1	8