

Palm Beach County (County) makes no representation or warranties whatsoever on the attached / enclosed information reflected herein pertaining to easements, rights-of-way, setback lines, reservations, agreements, and other similar matters. The information provided herein should not be relied upon by the requesting party to confirm the existence / non-existence of facts contained herein.

Notes:
 Lake Park West Rd. changed to Northlake Blvd. by R 85-1670.
 NORTHLAKE BLVD: FOR "RELEASE OF SURFACE RIGHTS" SEE OR 12236-199 IN PARCELS INDICATED IN Ⓞ
 RELEASE OF SURFACE RIGHTS: PARCELS 107, 207, 211 OR 1236-543

- (1977) E 201 SHALOM MEMORIAL PARK PB31P194
- SE 02 GARDEN OF RUEBEN (1977) PB31P244
- SE 03 GARDEN OF RUEBEN 1ST ADD. (1977) PB31P247
- SE 04 GARDEN OF ISRAEL (1977) PB32P71
- SE 05 SHALOM MEMORIAL BIBLE GARDEN (1978) PB32P134
- SE 06 GARDENS OF HEBRON & MT. CARMEL (1978) PB32P183
- SW 07 STONEWAL ESTATES PB47P12 (1984)
- SE 08 GARDENS OF BEN GURION (89) PB60P74

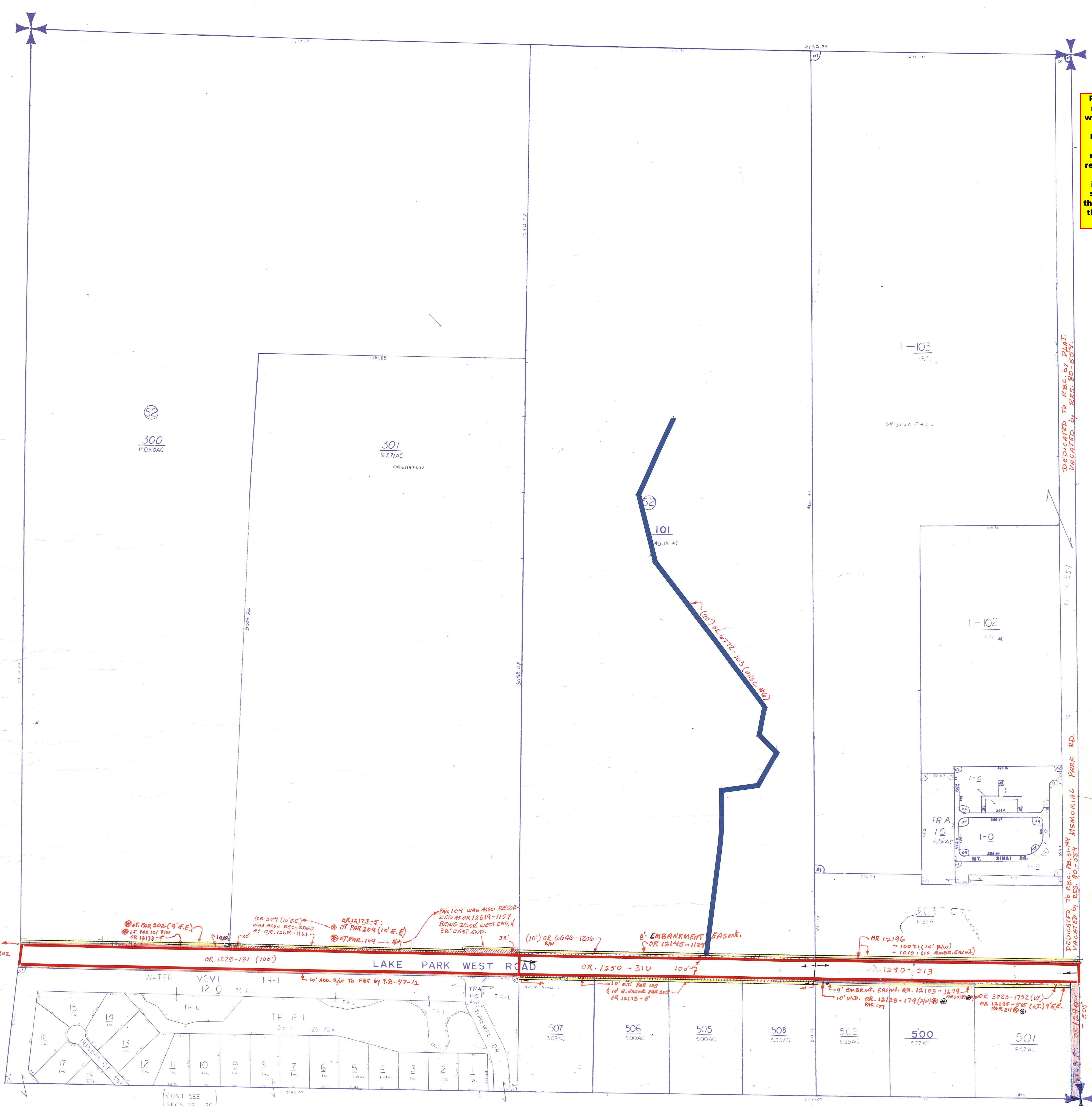
PT OF SEC IN COUNTY-Ⓞ
 PT OF SEC IN PALM BEACH GARDENS-Ⓞ

NOTE:
 NOT TO BE REPRODUCED IN ANY FORM EXCEPT BY EXPRESS WRITTEN CONSENT FROM THE PALM BEACH COUNTY ASSESSOR.
 Information shown hereon is compiled from the best available sources and CANNOT be used for surveys or land transfers of any type.

PALM BEACH COUNTY
 MISC.
 PROPERTY APPRAISER

| | | | | | | | |
|----|----|----|----|----|----|----|----|
| 36 | 31 | 32 | 33 | 34 | 35 | 36 | 31 |
| 1 | 6 | 5 | 4 | 3 | 2 | 1 | 6 |
| 42 | 7 | 8 | 9 | 10 | 11 | 12 | 7 |
| 13 | 18 | 17 | 16 | 15 | 14 | 13 | 18 |
| 24 | 19 | 20 | 21 | 22 | 23 | 24 | 19 |
| 29 | 30 | 29 | 28 | 27 | 26 | 25 | 29 |
| 36 | 31 | 32 | 33 | 34 | 35 | 36 | 31 |
| 1 | 6 | 5 | 4 | 3 | 2 | 1 | 6 |

| | | | |
|----------|------------|-----|----------|
| RGE | TWP | SEC | AERIAL |
| 41 | 42 | 14 | NO 58-29 |
| SCALE | 1"=200' | | |
| DRAWN BY | GRICE | | |
| UPDATED | 7-4-91 LAR | | |



300
96.65 AC

301
97.71 AC

101
40.15 AC

1-102
4.76 AC

1-103
3.71 AC

507
309 AC

506
503 AC

505
500 AC

508
503 AC

502
509 AC

500
577 AC

501
657 AC

Ⓞ AT PAR 204 (9' E.E.)
 Ⓞ AT PAR 101 R/W
 OR 12173-5

PAR 204 (10' E.E.)
 WAS ALSO RECORDED
 AS OR 12611-1161

OR 12173-5
 Ⓞ AT PAR 204 (10' E.E.)
 Ⓞ AT PAR 104

PAR 104 WAS ALSO RECORDED
 AS OR 12619-1157
 BEING 20.02 WEST END, 9
 32' EAST END

(10') OR 6640-1206
 R/W

8' EMBANKMENT EASMT.
 OR 12145-1124

OR 12196
 - 1007 (10' R/W)
 - 1010 (10' EMBANKMENT)

9' EMBANKMENT EASMT. OR 12103-1679
 10' W.D. OR 12123-179 (44')
 PAR 107

OR 3023-1752 (10')
 OR 12199-218 (67') 9' E.E.
 PAR 211

(CONT. SEE SECS 23 & 26)

DEDICATED TO P.B.C. BY PLAT VACATED BY RES. 80-554

DEDICATED TO P.B.C. BY PLAT VACATED BY RES. 80-554

DRAINAGE AREA