

ALL TRACT DESCRIPTIONS ARE AS MEASURED PARALLEL TO THE NORTH AND EAST SECTION LINES.

ALL OF SECTION IS IN THE COUNTY CODED -00.

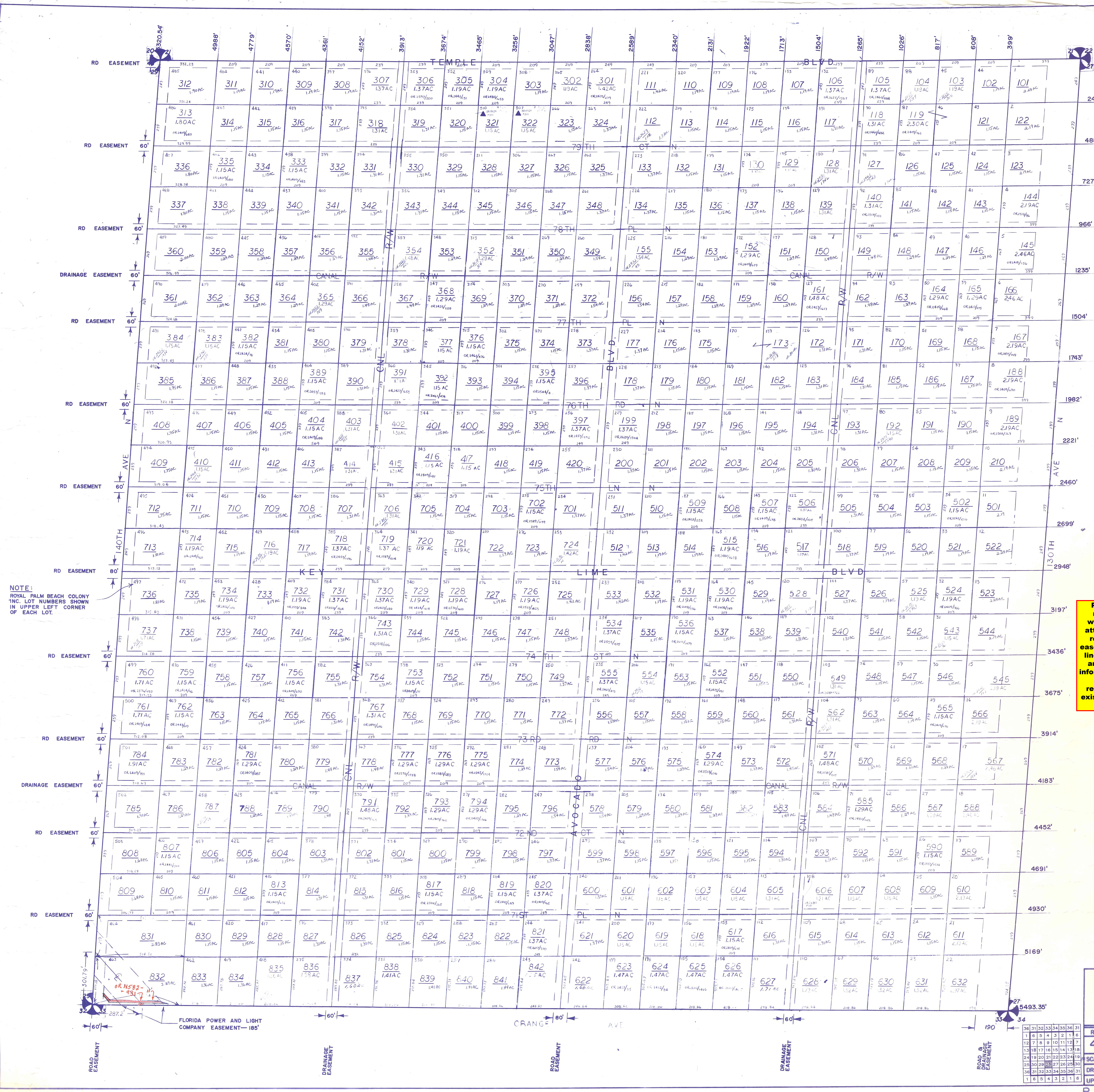
**Palm Beach County (County)** makes no representation or warranties whatsoever on the attached / enclosed information reflected herein pertaining to easements, rights-of-way, setback lines, reservations, agreements, and other similar matters. The information provided herein should not be relied upon by the requesting party to confirm the existence / non-existence of facts contained herein.

NOTE:  
NOT TO BE REPRODUCED IN ANY FORM EXCEPT BY EXPRESS WRITTEN CONSENT FROM THE PALM BEACH COUNTY PROPERTY APPRAISER  
Information shown herein is compiled from the best available sources and CANNOT be used for surveys or land transfers of any type.

**PALM BEACH COUNTY**  
**GARY R. NIKOLITS**  
PROPERTY APPRAISER

RGE	TWP	SEC.	AERIAL
41	42	28	NO 56-35
SCALE			1" = 200'
DRAWN BY			SELLERS 11/14/77
UPDATED			8/14/98 J. Knolls

R.P.B.C. - "W"



NOTE:  
ROYAL PALM BEACH COLONY INC. LOT NUMBERS SHOWN IN UPPER LEFT CORNER OF EACH LOT.

FLORIDA POWER AND LIGHT COMPANY EASEMENT - 185'