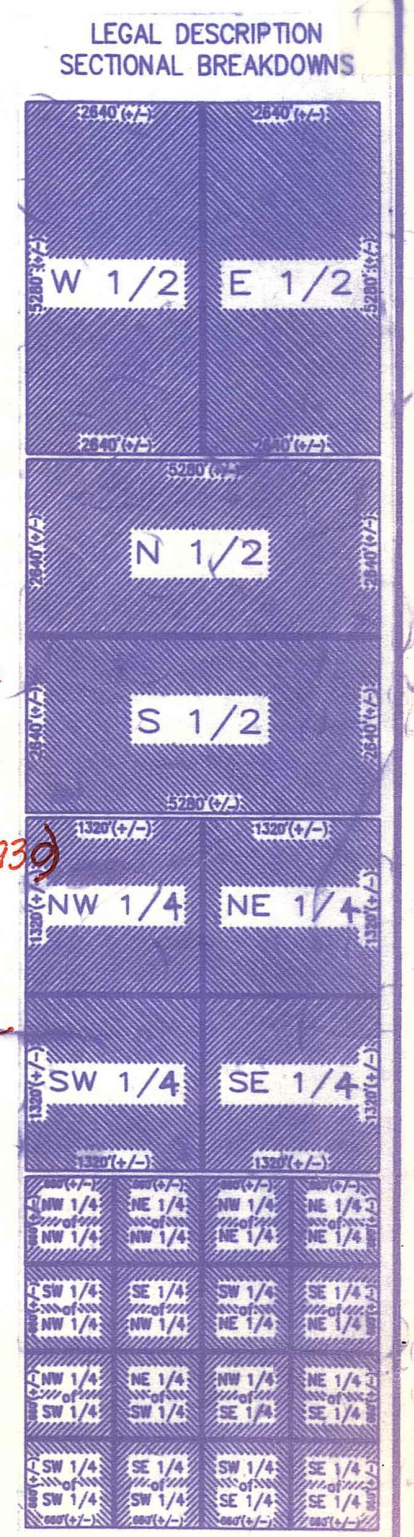


Palm Beach County (County) makes no representation or warranties whatsoever on the attached / enclosed information reflected herein pertaining to easements, rights-of-way, setback lines, reservations, agreements, and other similar matters. The information provided herein should not be relied upon by the requesting party to confirm the existence / non-existence of facts contained herein.

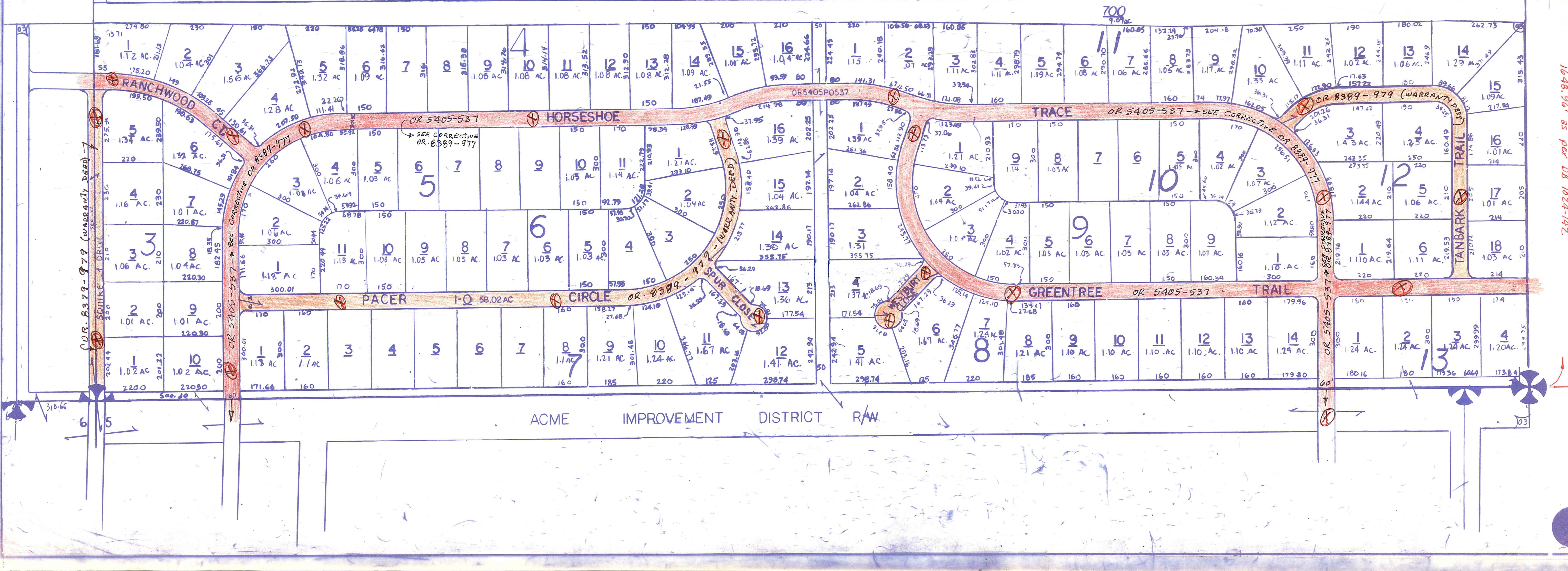
Notes:
 - Southern Blvd. (S.R. 80) Please Note: CMB 13-490 for S.R. 80 describes a 100' R/W for 17.4 miles. The description can not be plotted with reasonable accuracy. (6-30-93)
 - ~~ROADS REMOVED FROM RD MAINTENANCE INVENTORY AS RESULT OF WELLINGTON INCORPORATION ON NOV. 7, 1995~~



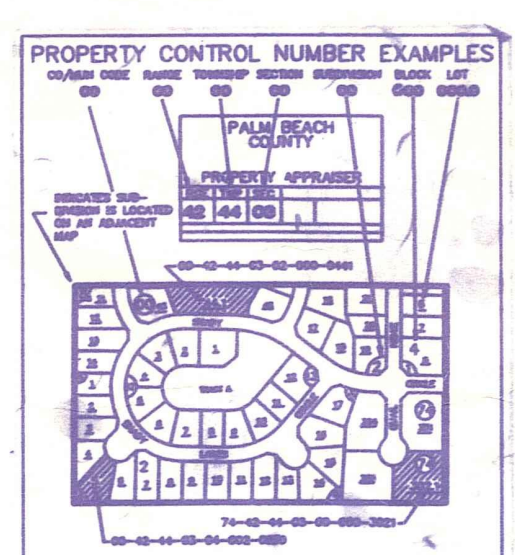
OI-LOXAHATCHEE GROVES
 SEC'S 17-22 & 27-34-43-41
 CODEL IN 17

SEE SEC 35 FOR CONTIN OF LT 8
 BLK K
 OI-LOX HOMES PL 2 PB 22 P 55
 O3-PADDOCK PARK N91 OF WELLINGTON (1981) PB 41 P 118

ALL OF SEC IN COUNTY-⊙



NOT TO BE REPRODUCED IN ANY FORM EXCEPT BY EXPRESS WRITTEN CONSENT FROM THE PALM BEACH COUNTY PROPERTY APPRAISER
 Information shown hereon is compiled from the best available sources and CANNOT be used for surveys or land transfers of any type.



PALM BEACH COUNTY
 N-20
 PROPERTY APPRAISER

RGE	TWP	SEC	AERIAL
41	43	32	NO268D

SCALE 1" = 200'
 DRAWN BY [Signature]
 UPDATED 8/19/92 Joxe