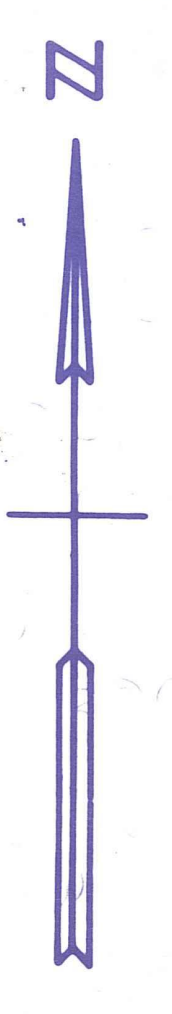


SEC 36

E 1/2
PB FARMS NO. 3 BLOCK 9

LWDD S-1 CANAL



Palm Beach County (County) makes no representation or warranties whatsoever on the attached / enclosed information reflected herein pertaining to easements, rights-of-way, setback lines, reservations, agreements, and other similar matters. The information provided herein should not be relied upon by the requesting party to confirm the existence / non-existence of facts contained herein.

NOTE: P B FARMS CO PL3 PB2P45-54
CODED 42-43-27-05
BLOCK 9 CODED COUNTY (72)
N 3/4 OF SEC 36 (72)

Notes:

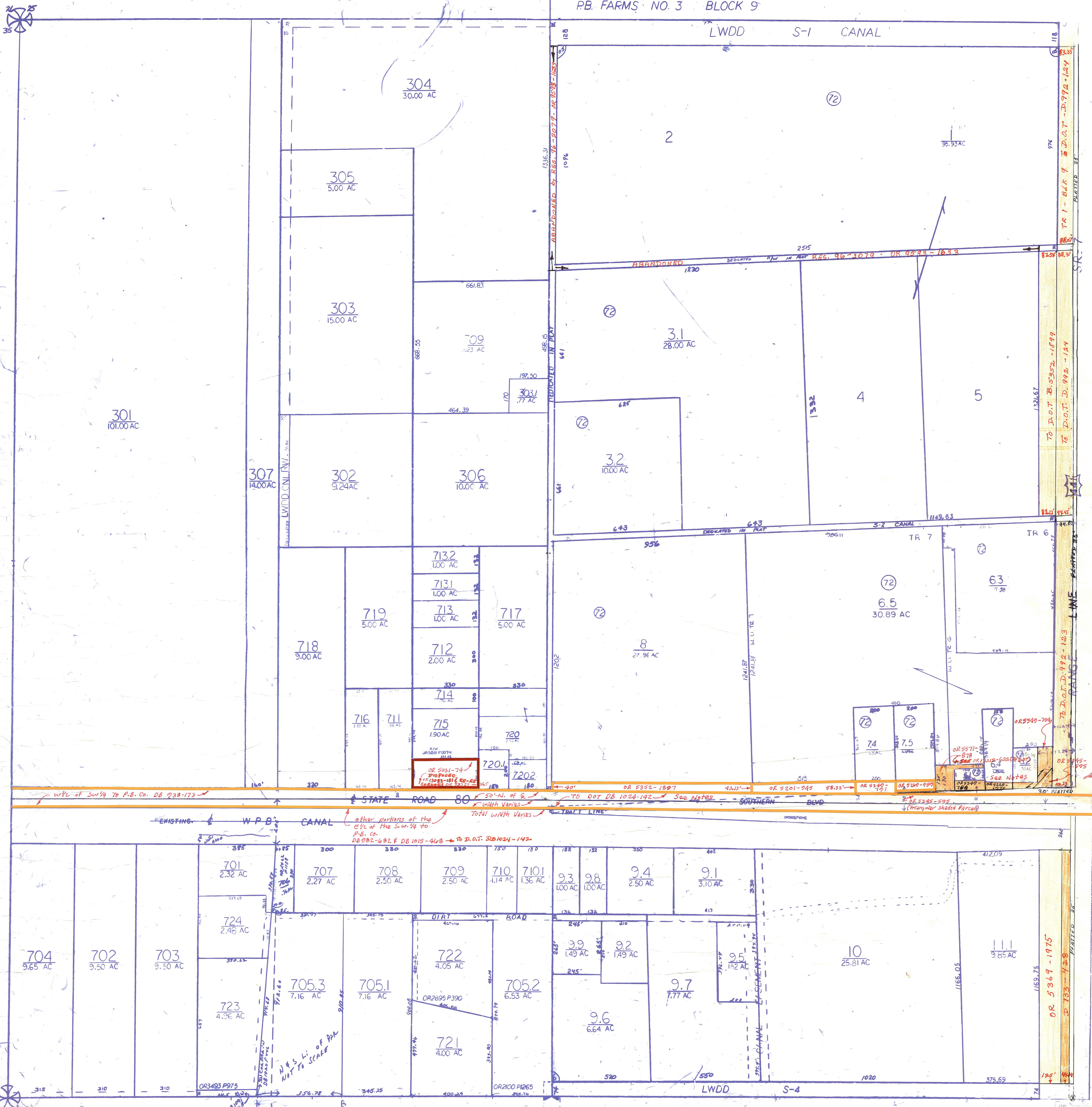
- Southern Blvd (S.R. 80) Please Note: CMB 13-490 for S.R. 80 describes a 100' R/W for 17.4 miles. The description can not be plotted with reasonable accuracy. (6-30-1930).
- A portion of the south of and adjacent to parcels 6.2 & 6.4 is contained in a restrictive covenant in OR 6894-726. (in alignment & reservation file).
- FOR RESTRICTIVE COVENANT-RESERVATION OF ULTIMATE R/W S.R. 7 & S.R. 80 (PAR. 4 & 5 Lot 6, BLDG 9) SEE OR 6894-726
- AGREEMENT: B/TW P.B.C & VILLAGE OF ROYAL PALM BEACH FOR WATER & SEWER SERVICE. WILLAGE WOULD SERVE WEST OF S.R. 7 EXTENDED NORTH 5500' FROM SOUTHERN BLVD. P.B.C WILL SERVE EAST OF W. LINE OF S.R. 7

SEE SUR 8 FOR R/W S.R. 7

NOTE:
NOT TO BE REPRODUCED IN ANY FORM EXCEPT BY EXPRESS WRITTEN CONSENT FROM THE PALM BEACH COUNTY PROPERTY APPRAISER
Information shown hereon is compiled from the best available sources and CANNOT be used for surveys or land transfers of any type.

PALM BEACH COUNTY
N-21
PROPERTY APPRAISER

RGE	TWP.	SEC	BLK	AERIAL
41	43	36	9	NO88-71A
SCALE		1" = 200'		
DRAWN BY		G. Smith		
UPDATED				



1321.3' P. SE COR. OF SW SW OR 2422 P1158