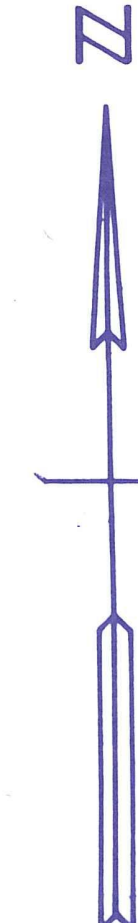


SUGAR POND MANOR  
OF WELLINGTON CODED 01 IN 41-44-04

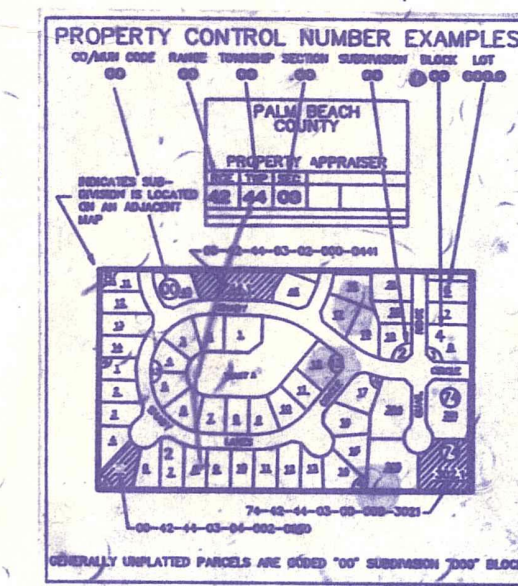


- NOTE:  
GREENVIEW SHORES NO. 2 OF  
WELLINGTON CODED 41-44-09-02  
OF EQUESTRIAN/POLO VILLAGE & COMPLEX  
OF PALM BEACH POLO & COUNTRY CLUB  
(10-74) PB35 P187
- #02 BAGATTELLE CONDO 1980
  - #03 HURLINGTON CONDO 1980
  - #04 LA QUINTA CONDO 80
  - #05 POLO ISLAND CONDO (1981)
  - #06 COWDRAY PARK CONDO (1981)
  - #07 MEADOW BROOK CONDO (1982)
  - #08 BEDFORD MEWS AT WELLINGTON (1982) PB42P25
  - #09 POLO ISLAND PB50P155 (86)
  - #10 WELLINGTON FL OF WELLINGTON (87) PB53P149
  - NW 11 STONEGATE OF WELLINGTON (90) PB62P184
  - NE 12 FAIRWAY COVE OF WELLINGTON (91) PB67P187
  - NW 13 STONEGATE OF WELLINGTON REPL (91) PB67 P135
  - SW 14 ELEMENTARY SCHOOL L (92) PB68P162

**Palm Beach County (County) makes no representation or warranties whatsoever on the attached / enclosed information reflected herein pertaining to easements, rights-of-way, setback lines, reservations, agreements, and other similar matters. The information provided herein should not be relied upon by the requesting party to confirm the existence / non-existence of facts contained herein.**

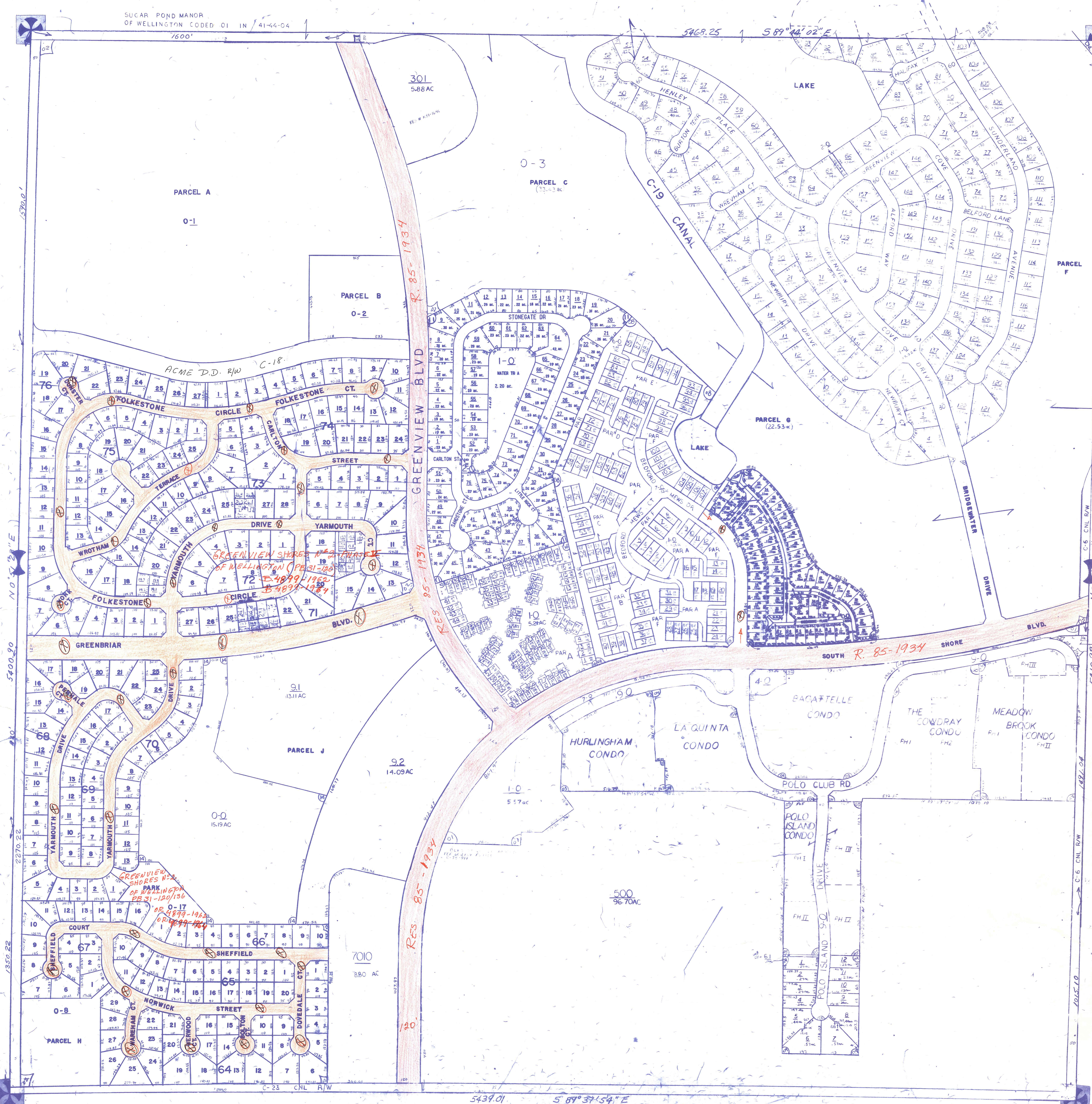
⊕ ROADS REMOVED FROM  
RD MAINTENANCE INVENTORY AS  
RESULT OF WELLINGTON INCOR-  
PORATION ON NOV. 7, 1995.

NOTE:  
NOT TO BE REPRODUCED IN  
ANY FORM EXCEPT BY EXPRESS  
WRITTEN CONSENT FROM THE  
PALM BEACH COUNTY  
ASSESSOR.  
Information shown hereon is  
compiled from the best available  
sources and CANNOT be used  
for surveys or land transfers of  
any type.



PALM BEACH  
COUNTY

PROPERTY APPRAISER			
RGE	TWP	SEC	AERIAL
41	44	16	NO56-69
SCALE 1"=200'			
DRAWN BY GRICE 11-21-74		UPDATED 6-92	



0-23