

NE 01 COMMERCE PARK AT WELLINGTON (1982) PB43 P116
 NE 02 COMMERCE PARK AT WELLINGTON (1985) PB48 P122
 NE 03 COMMERCE PARK EAST (89) PB61 P95

Palm Beach County (County) makes no representation or warrants whatsoever on the attached / enclosed information reflected herein pertaining to easements, rights-of-way, setback lines, reservations, agreements, and other similar matters. The information provided herein should not be relied upon by the requesting party to confirm the existence / non-existence of facts contained herein.

NOTES

- LAKE WORTH RD: RED TAPE SHOWS THE CORRECT ALIGNMENT FOR LAKE WORTH RD R/W ACCORDING TO D.R. 6320-1622.
- (X) ROADS REMOVED FROM RD. MAINTENANCE INVENTORY AS RESULT OF WELLINGTON INCORPORATION ON NOV. 7, 1995
- LAKE WORTH RD: DATED PARCEL (SE. 14) WAS CONVEYED FROM ACME IMPRV DIST. TO LENNAR HOMES, INC. BY D.R. 9628. PORTION OF THIS PARCEL WAS CONVEYED FROM LENNAR HOMES, INC TO P.B.C. BY OR 9628-1244 FOR DRAINAGE BASIN.

ALL OF SECTION 15 IS IN THE COUNTY-00

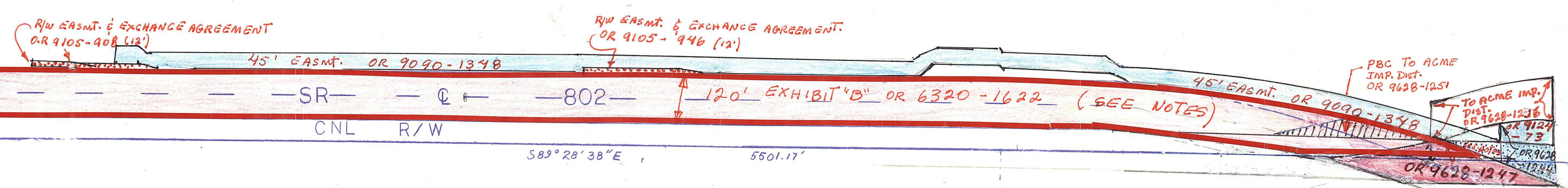
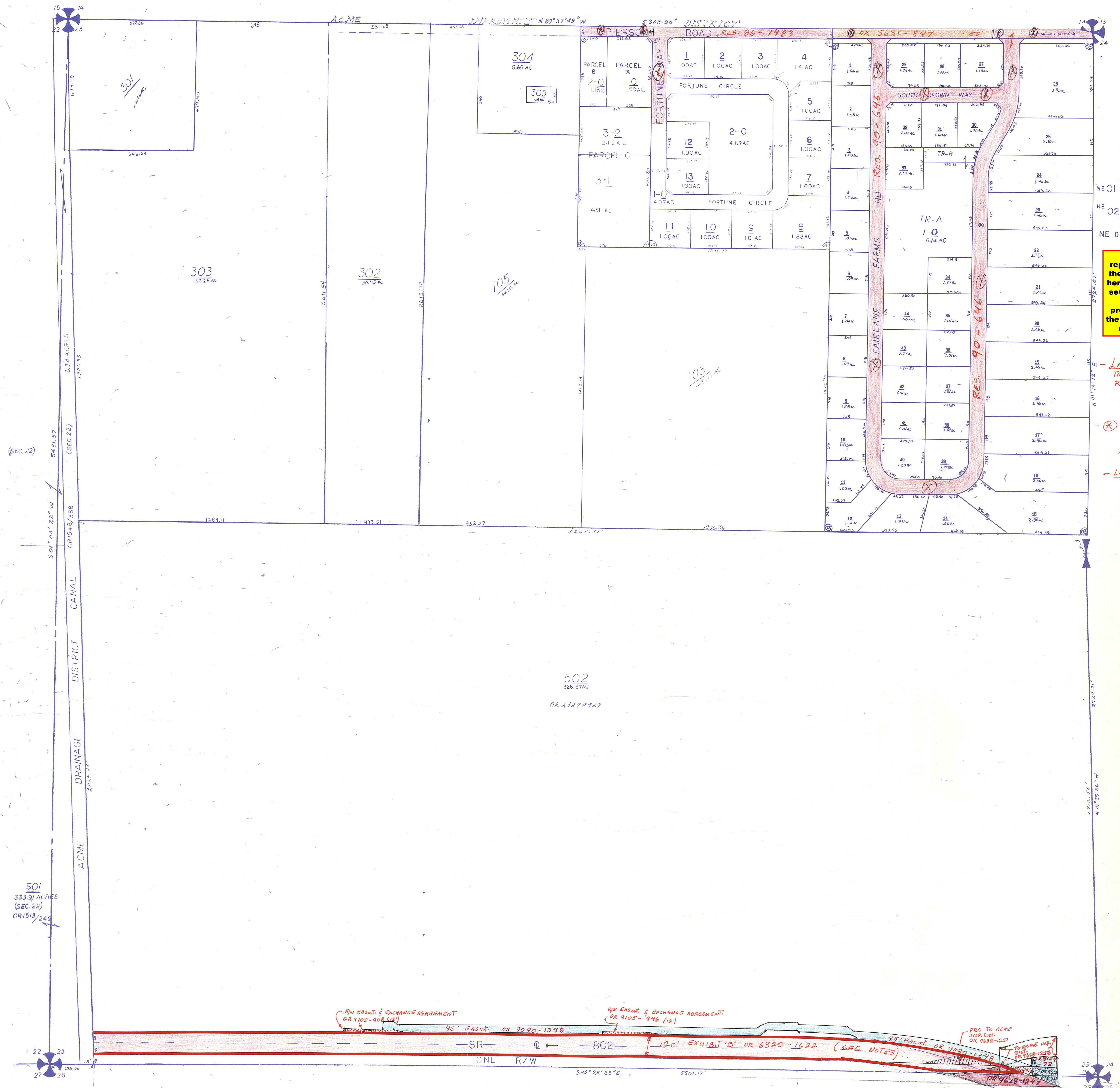
NOTE:

NOT TO BE REPRODUCED IN ANY FORM EXCEPT BY EXPRESS WRITTEN CONSENT FROM THE PALM BEACH COUNTY ASSESSOR. Information shown hereon is compiled from the best available sources and CANNOT be used for surveys or land transfers of any type.

M-24

PALM BEACH COUNTY
 REBECCA E. WALKER
 COUNTY ASSESSOR

RGE	TWP	SEC	AERIAL
41	44	23	ND/50C
SCALE 1"=200'			
DRAWN BY OLL/S 4-18-98			
UPDATED 1-2-2004			



501
333.91 ACRES
(SEC. 22)
OR 1513/249

502
326.87 AC
OR 1327/449

303
64.25 AC

302
30.75 AC

105
44.50 AC

103
29.17 AC

304
6.65 AC

305
28.16 AC

PARCEL B
2-0
1.16 AC

PARCEL A
1-0
1.39 AC

PARCEL C
3-2
2.15 AC

3-1
4.31 AC

11
1.00 AC

10
1.00 AC

9
1.01 AC

8
1.83 AC

7
1.00 AC

6
1.00 AC

5
1.00 AC

4
1.41 AC

3
1.00 AC

2
1.00 AC

1
1.00 AC

TR-A
1-0
6.14 AC

26
3.35 AC

25
2.10 AC

24
2.40 AC

23
2.40 AC

22
2.40 AC

21
2.40 AC

20
2.40 AC

19
2.40 AC

18
2.40 AC

17
2.40 AC

16
2.40 AC

15
2.40 AC

14
2.40 AC

13
2.40 AC

12
2.40 AC

11
2.40 AC

10
2.40 AC

9
2.40 AC

8
2.40 AC

7
2.40 AC

6
2.40 AC

5
2.40 AC

4
2.40 AC

3
2.40 AC

2
2.40 AC

1
2.40 AC

TR-A
1-0
6.14 AC

11
1.00 AC

10
1.00 AC

9
1.01 AC

8
1.83 AC

7
1.00 AC

6
1.00 AC

5
1.00 AC

4
1.41 AC

3
1.00 AC

2
1.00 AC

1
1.00 AC

TR-A
1-0
6.14 AC

26
3.35 AC

25
2.10 AC

24
2.40 AC

23
2.40 AC

22
2.40 AC

21
2.40 AC

20
2.40 AC

19
2.40 AC

18
2.40 AC

17
2.40 AC

16
2.40 AC

15
2.40 AC

14
2.40 AC

13
2.40 AC

12
2.40 AC

11
2.40 AC

10
2.40 AC

9
2.40 AC

8
2.40 AC

7
2.40 AC

6
2.40 AC

5
2.40 AC

4
2.40 AC

3
2.40 AC

2
2.40 AC

1
2.40 AC

TR-A
1-0
6.14 AC

11
1.00 AC

10
1.00 AC

9
1.01 AC

8
1.83 AC

7
1.00 AC

6
1.00 AC

5
1.00 AC

4
1.41 AC

3
1.00 AC

2
1.00 AC

1
1.00 AC

TR-A
1-0
6.14 AC

26
3.35 AC

25
2.10 AC

24
2.40 AC

23
2.40 AC

22
2.40 AC

21
2.40 AC

20
2.40 AC

19
2.40 AC

18
2.40 AC

17
2.40 AC

16
2.40 AC

15
2.40 AC

14
2.40 AC

13
2.40 AC

12
2.40 AC

11
2.40 AC

10
2.40 AC

9
2.40 AC

8
2.40 AC

7
2.40 AC

6
2.40 AC

5
2.40 AC

4
2.40 AC

3
2.40 AC

2
2.40 AC

1
2.40 AC

TR-A
1-0
6.14 AC

11
1.00 AC

10
1.00 AC

9
1.01 AC

8
1.83 AC

7
1.00 AC

6
1.00 AC

5
1.00 AC

4
1.41 AC

3
1.00 AC

2
1.00 AC

1
1.00 AC

TR-A
1-0
6.14 AC

26
3.35 AC

25
2.10 AC

24
2.40 AC

23
2.40 AC

22
2.40 AC

21
2.40 AC

20
2.40 AC

19
2.40 AC

18
2.40 AC

17
2.40 AC

16
2.40 AC

15
2.40 AC

14
2.40 AC

13
2.40 AC

12
2.40 AC

11
2.40 AC

10
2.40 AC

9
2.40 AC

8
2.40 AC

7
2.40 AC

6
2.40 AC

5
2.40 AC

4
2.40 AC

3
2.40 AC

2
2.40 AC

1
2.40 AC

TR-A
1-0
6.14 AC

11
1.00 AC

10
1.00 AC

9
1.01 AC

8
1.83 AC

7
1.00 AC

6
1.00 AC

5
1.00 AC

4
1.41 AC

3
1.00 AC

2
1.00 AC

1
1.00 AC

TR-A
1-0
6.14 AC

26
3.35 AC

25
2.10 AC

24
2.40 AC

23
2.40 AC

22
2.40 AC

21
2.40 AC

20
2.40 AC

19
2.40 AC

18
2.40 AC

17
2.40 AC

16
2.40 AC

15
2.40 AC

14
2.40 AC

13
2.40 AC

12
2.40 AC

11
2.40 AC

10
2.40 AC

9
2.40 AC

8
2.40 AC

7
2.40 AC

6
2.40 AC

5
2.40 AC

4
2.40 AC

3
2.40 AC

2
2.40 AC

1
2.40 AC

TR-A
1-0
6.14 AC

11
1.00 AC

10
1.00 AC

9
1.01 AC

8
1.83 AC

7
1.00 AC

6
1.00 AC

5
1.00 AC

4
1.41 AC

3
1.00 AC

2
1.00 AC

1
1.00 AC

TR-A
1-0
6.14 AC

26
3.35 AC

25
2.10 AC

24
2.40 AC