

Palm Beach County (County) makes no representation or warranties whatsoever on the attached / enclosed information reflected herein pertaining to easements, rights-of-way, setback lines, reservations, agreements, and other similar matters. The information provided herein should not be relied upon by the requesting party to confirm the existence / non-existence of facts contained herein.

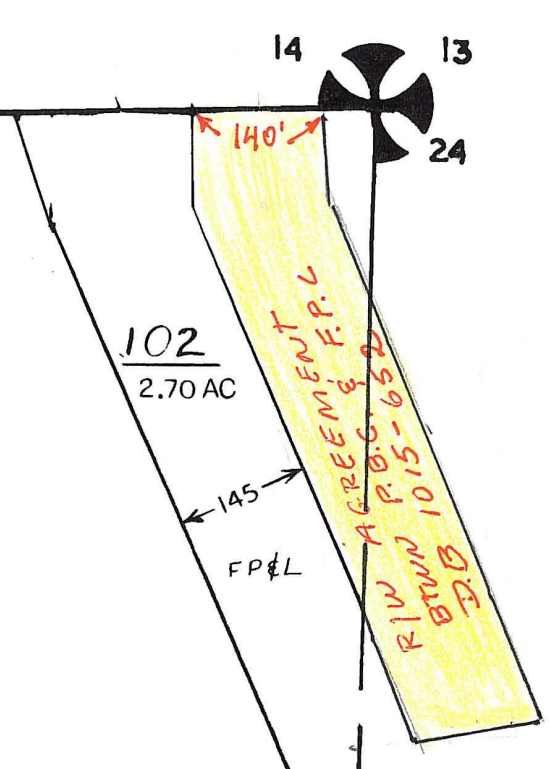
ALL SECTIONS IN COUNTY CODED 00

NOTE:  
NOT TO BE REPRODUCED IN  
ANY FORM EXCEPT BY EXPRESS  
WRITTEN CONSENT FROM THE  
PALM BEACH COUNTY  
PROPERTY APPRAISER  
Information shown hereon is  
compiled from the best available  
sources and CANNOT be used  
for surveys or land transfers of  
any type.

M-3  
PALM BEACH  
COUNTY  
GARY R. NIKOLITS  
PROPERTY APPRAISER

36	31	32	33	34	35	36	37
1	6	5	4	3	2	1	6
12	7	8	9	10	11	12	7
13	18	17	16	15	14	13	18
24	19	20	21	22	23	24	19
25	30	29	28	27	26	25	30
36	31	32	33	34	35	36	31
1	6	5	4	3	2	1	6

RGE	TWP	SEC	AERIAL
41	45	23	NO 58-85
SCALE		1"=200'	
DRAWN BY		J. BUSH (10-SEPT. 1979)	
UPDATED		10-14-74 LP	

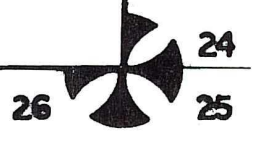
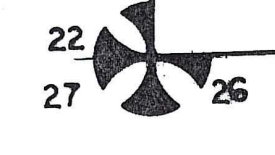
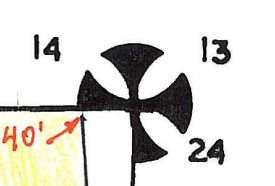
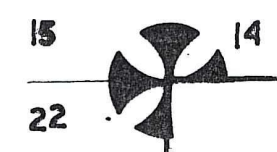


1010  
299.30 AC

3000  
338.00 AC

54.20 SLS

600



BRUNING 44.14.1 31857