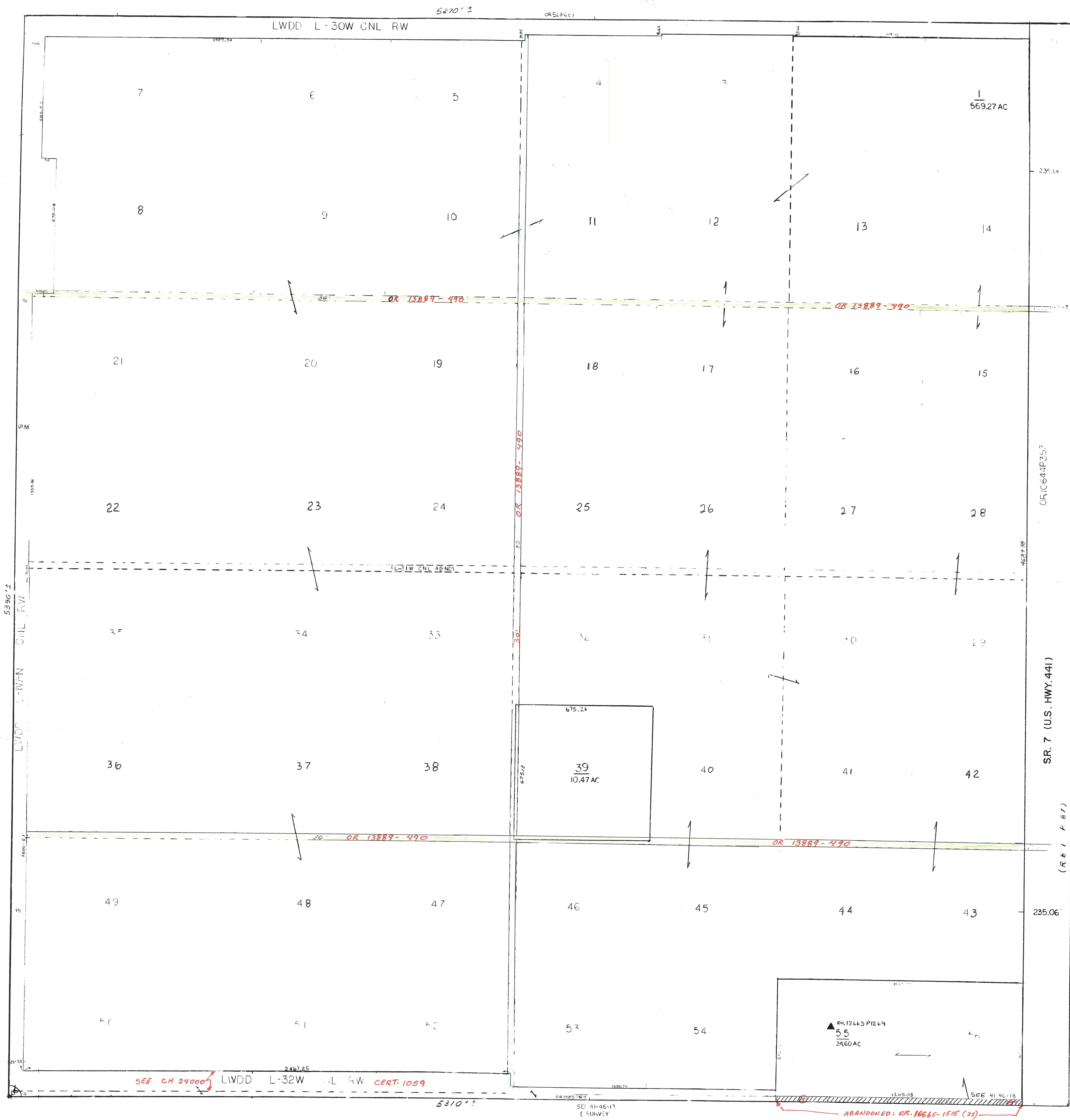




Palm Beach County (County) makes no representation or warranties whatsoever on the attached / enclosed information reflected herein pertaining to easements, rights-of-way, setback lines, reservations, agreements, and other similar matters. The information provided herein should not be relied upon by the requesting party to confirm the existence / non-existence of facts contained herein.



NOTE:  
PALM BEACH FARMS CO. PL. NO. 3  
IS CODED 00-42-43-27-05 & IS  
FOUND IN PLAT BOOK 2 P. 45

25 - 96 - 58  
12 - 46 - 41

L-34

**PALM BEACH COUNTY**  
**GARY R. NIKOLITS**  
PROPERTY APPRAISER

RGE	TWP	SEC	AERIAL
41	46	12	NO 59-14
SCALE 1" = 200'		BLK 65	
DRAWN BY		M. Adams 8-24-78	
UPDATED		9/26/01	