

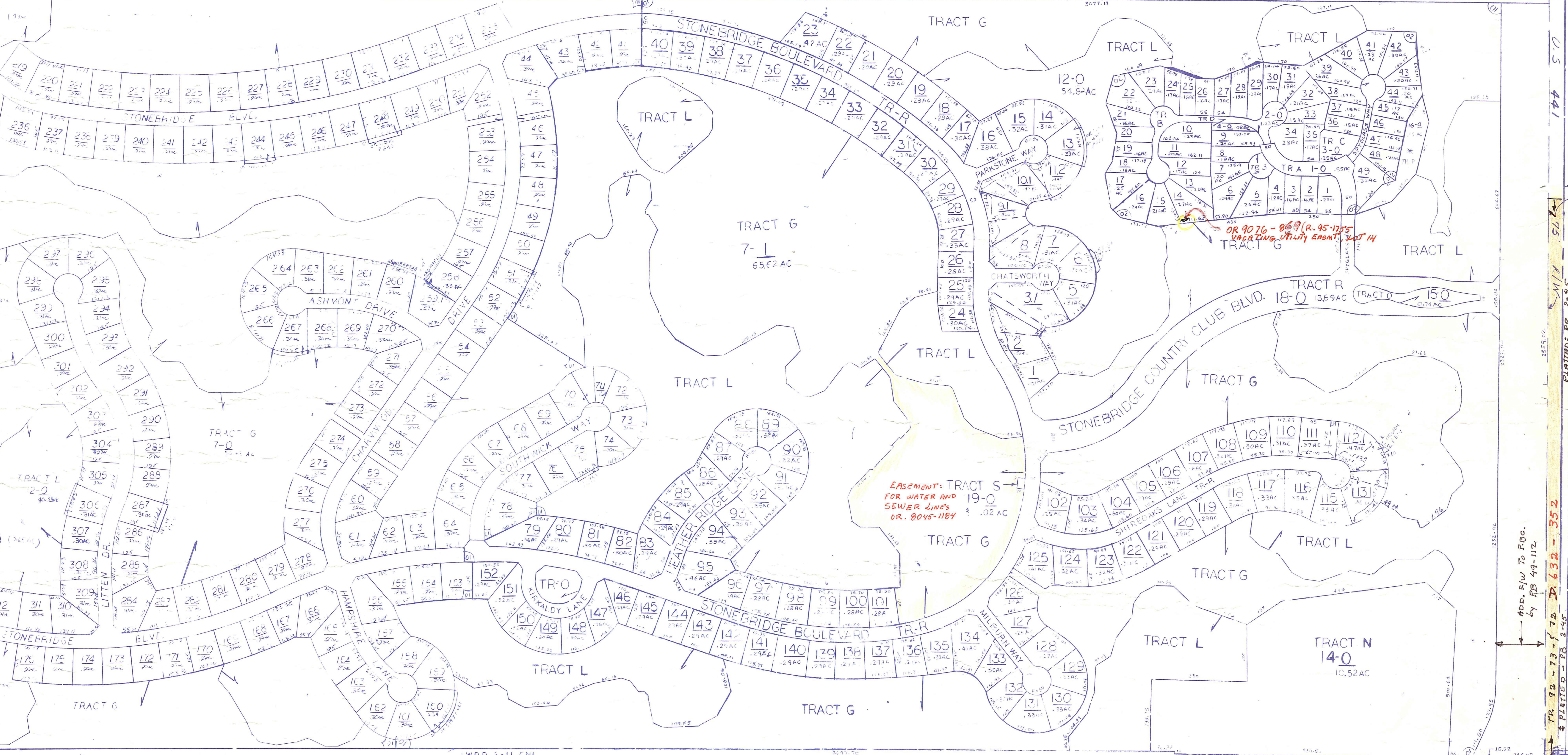
SE 01 STONEBRIDGE PL 1 PB49/112 (83)  
 ADD'L TR.P SEE AS \*ERISK \*  
 SE 02 STONEBRIDGE TR P PB52/101 (86)

**Palm Beach County (County) makes no representation or warranties whatsoever on the attached / enclosed information reflected herein pertaining to easements, rights-of-way, setback lines, reservations, agreements, and other similar matters. The information provided herein should not be relied upon by the requesting party to confirm the existence / non-existence of facts contained herein.**

NOTE:  
 PALM BEACH FARMS CO PL 3 TR 2 P 45-54  
 ALL BLKS CODED 42-43-22-05  
 BLK 69 CODED COUNTY (C)

★ SUB 01 - BROKEN LINE INDICATES CRAG LOT LINE. REALIGNED PER AFD 11/14/84 B4568 P1829 & B4646 P643

NOTE:  
 NOT TO BE REPRODUCED IN ANY FORM EXCEPT BY EXPRESS WRITTEN CONSENT FROM THE PALM BEACH COUNTY ASSESSOR.  
 Information shown hereon is compiled from the best available sources and CANNOT be used for surveys or land transactions of any type.



COUED TO SEC 35  
 00-41-46-35-01

L-38

**PALM BEACH COUNTY 44**  
**GARY R. NIKOLITS**  
 PROPERTY APPRAISER

RGE	TWP	SEC	BLK	AERIAL
41	46	36	69	NO 59-7
SCALE		1"=200'		
DRAWN BY		M.C. ADA...		
UPDATED		11/14/84		