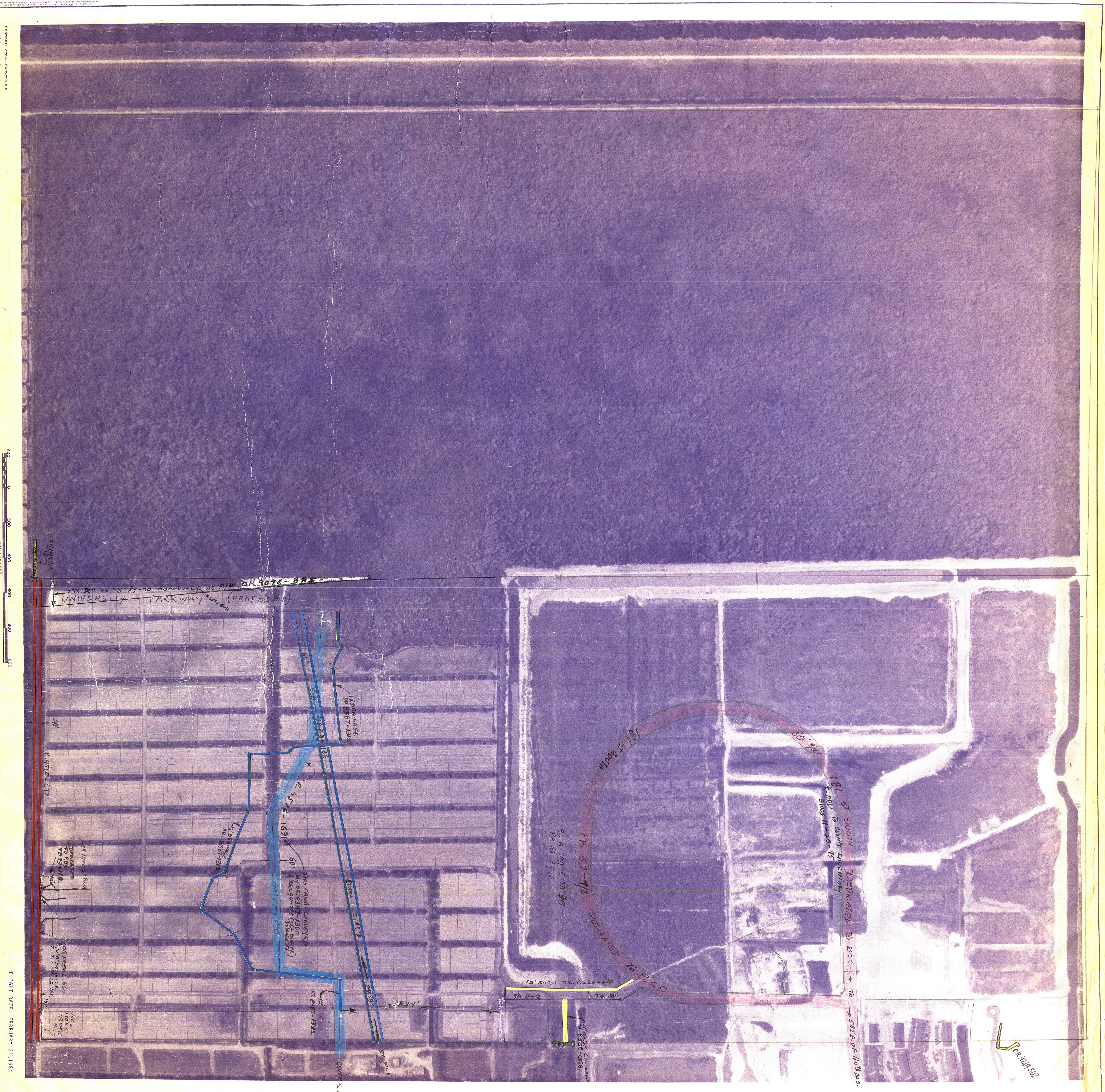


Palm Beach County (County) makes no representation or warrants whatsoever on the attached / enclosed information reflected herein pertaining to easements, rights-of-way, setback lines, reservations, agreements, and other similar matters. The information provided herein should not be relied upon by the requesting party to confirm the existence / non-existence of facts contained herein.



200 0 200 400 600 800 1000
SCALE IN FEET

FLIGHT DATE: FEBRUARY 21, 1984

PALM BEACH COUNTY			
REBECCA E. WALKER			
PROPERTY APPRAISER			
REB	TYP	SEC	AERIAL
41	47	2	NO 58-6
SCALE 1"=200'			
DRAWN BY			
UPDATED			

NOTE:
NOT TO BE REPRODUCED IN ANY FORM EXCEPT BY EXPRESS WRITTEN CONSENT FROM THE PALM BEACH COUNTY PROPERTY APPRAISER
Information shown herein is compiled from the best available sources and CANNOT be used for survey or land transfer of any type.