

E1/2 OF ADMIRALS COVE WEST PL.1 (90) PB.62P19 (50)

Palm Beach County (County) makes no representation or warranties whatsoever on the attached / enclosed information reflected herein pertaining to easements, rights-of-way, setback lines, reservations, agreements, and other similar matters. The information provided herein should not be relied upon by the requesting party to confirm the existence / non-existence of facts contained herein.

NOTE

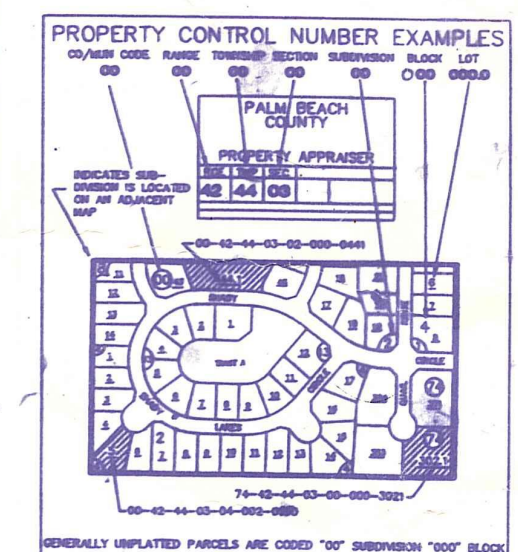
MILITARY TR: MAINTAINED BY FBC WITHIN LIMITS OF TOWN OF JUPITER. RES. 92-800 & R. 98-1852D

OLD DIXIE HWY: SEE NOTES IN SECT 12

NOTE:
PT. OF SEC. IN COUNTY - 00
REMAINDER IN JUPITER - 30

NOTE

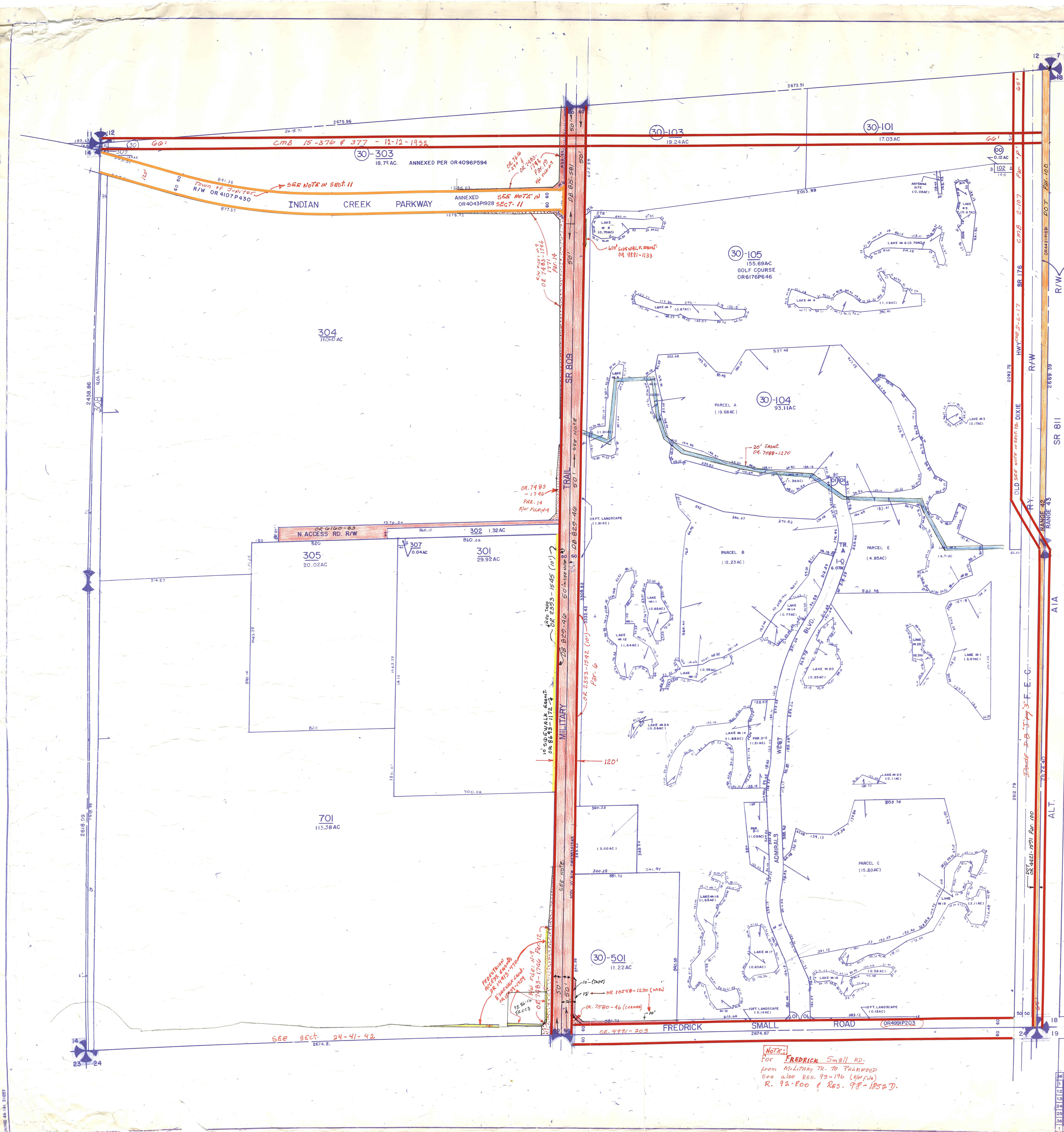
NOT TO BE REPRODUCED IN ANY FORM EXCEPT BY EXPRESS WRITTEN CONSENT FROM THE PALM BEACH COUNTY PROPERTY APPRAISER. Information shown hereon is compiled from the best available sources and CANNOT be used for surveys or land transfers of any type.



PALM BEACH COUNTY
N-7
PROPERTY APPRAISER

46	31	32	33	34	35	36	31
1	6	5	4	3	2	1	6
12	7	8	9	10	11	12	7
13	18	17	16	15	14	13	18
24	19	20	21	22	23	24	19
25	30	29	28	27	26	25	30
36	31	32	33	34	35	36	31
1	6	5	4	3	2	1	6

RGE TWP SEC AERIAL
42 41 13 NO.65-41
SCALE 1"=200
DRAWN BY L.A.PRICE 4-22-90
UPDATED 7-11-92



NOTE:
For FREDRICK Small RD.
from MILITARY TR. TO PALMWOOD
See also RES. 93-196 (LAW FILE)
R. 92-800 & RES. 98-1852D.

SEE SECT. 24-41-92

PROFESSIONAL
PLANNING &
ENGINEERING
P.A. #115
REGISTERED
PLANNING &
ENGINEERING
P.A. #115
REGISTERED

PLANNING & ENGINEERING