

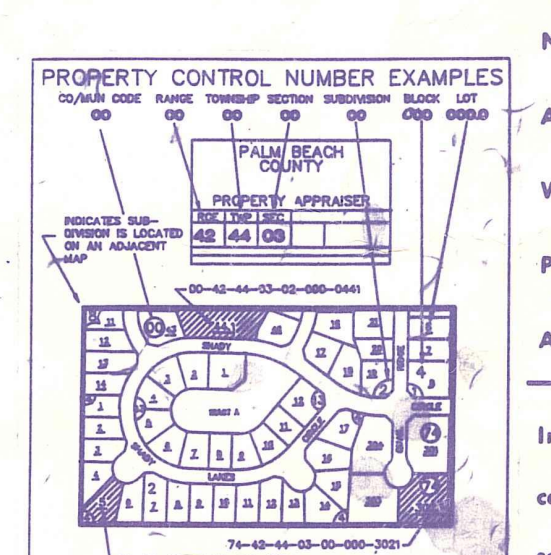


Palm Beach County (County) makes no representation or warranties whatsoever on the attached / enclosed information reflected herein pertaining to easements, rights-of-way, setback lines, reservations, agreements, and other similar matters. The information provided herein should not be relied upon by the requesting party to confirm the existence / non-existence of facts contained herein.

NOTES:
 / PB: 78-145 "ABACOA PLAT NO. 1"
 TR A, TR B (CENTRAL BLVD), TR C, TR R57, TR R58: PORTIONS OF THESE TRACTS AS PB 78-145 ARE SUBJECT TO AGREEMENT BETWEEN P.B.C. & NORTHERN P.B.C. IMPROVEMENT DISTRICT TO BE INCLUDED WITHIN UNITS OF DEVELOPMENT NO. 9A, 9B SEE OR 10012 - 627.

ALL OF SECTION IN COUNTY 00

NOTE:
 NOT TO BE REPRODUCED IN ANY FORM EXCEPT BY EXPRESS WRITTEN CONSENT FROM THE PALM BEACH COUNTY ASSESSOR.
 Information shown hereon is compiled from the best available sources and CANNOT be used for surveys or land transfers of any type.



LEGAL DESCRIPTION SECTIONAL BREAKDOWNS

W 1/2	E 1/2
N 1/2	
S 1/2	
NW 1/4	NE 1/4
SW 1/4	SE 1/4

PALM BEACH COUNTY
 N-9
 PROPERTY APPRAISER

54	31	32	33	34	35	36	31
1	8	5	4	3	2	1	8
12	2	9	10	11	12	7	
13	16	17	18	15	14	13	
24	19	20	21	22	23	22	19
25	30	28	26	27	26	25	30
36	31	32	33	34	35	36	31
1	8	5	4	3	2	1	8

RGE	TWP	SEC	AERIAL
42	41	24	NO 741
SCALE	1" = 200'		
DRAWN BY	Don Burke 9/1/12		
UPDATED	1-13-92 Don		

DRAWING 44141-10008