

Palm Beach County (County) makes no representation or warranties whatsoever on the attached / enclosed information reflected herein pertaining to easements, rights-of-way, setback lines, reservations, agreements, and other similar matters. The information provided herein should not be relied upon by the requesting party to confirm the existence / non-existence of facts contained herein.

DONALD ROSS ROAD DB 1036-478

361.88 150.35 207.02 544.52

1041.52

11.75

11.75

11.75

11.75

11.75

11.75

11.75

11.75

11.75

11.75

11.75

11.75

11.75

11.75

11.75

11.75

11.75

11.75

11.75

11.75

11.75

11.75

11.75

11.75

11.75

11.75

11.75

11.75

901
556.07 AC

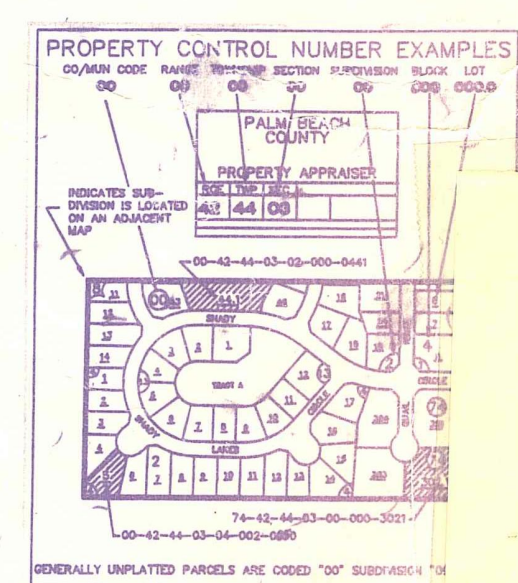
I-95 R/W
B4174P768
53.04 AC

ORDER OF
TAKING
PAR. 200
B-42-96-1151

701

15.00 AC

FLORIDA STATE TURNPIKE



NOT TO BE REPRODUCED IN ANY FORM EXCEPT BY EXPRESS WRITTEN CONSENT FROM THE

26-41-42
TO
16-41-43

31	32	33	34	35	36	31	RGE	TWP	SEC	AERIAL
1	8	4	3	2	1	6	4241	26		10000
12	7	8	9	10	11	12	SCALE	1" = 200'		
13	18	17	16	15	14	13	DATE			
24	19	20	21	22	23	24	DRAWN BY			
25	30	29	28	27	26	25	CHECKED BY			
36	31	32	33	34	35	36	DATE			
1	8	4	3	2	1	6				

DRAWING 44-141-14058