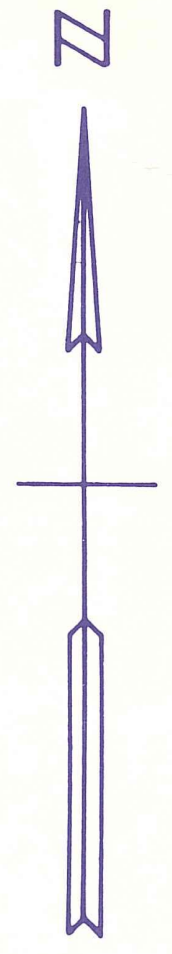


32 33
5

33 34
3

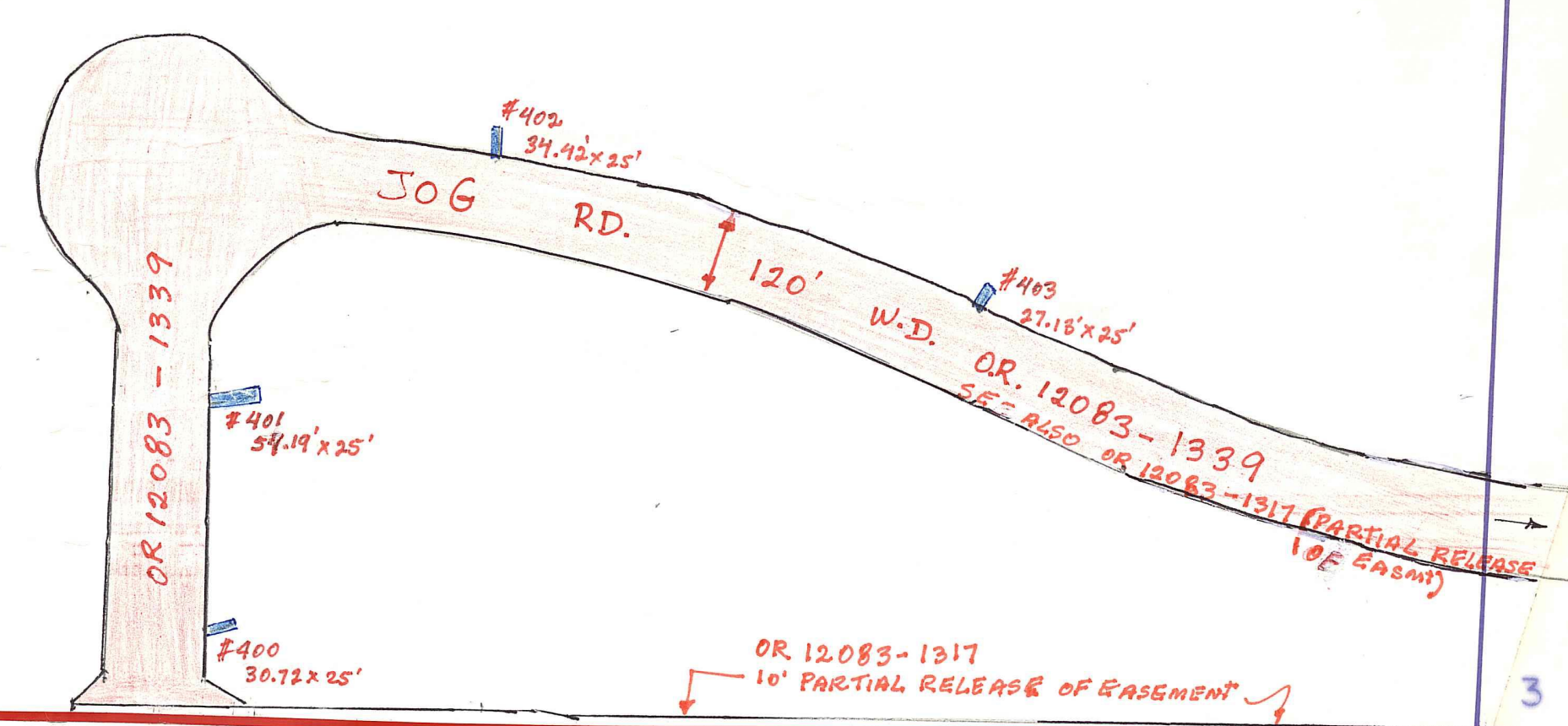


Palm Beach County (County) makes no representation or warranties whatsoever on the attached / enclosed information reflected herein pertaining to easements, rights-of-way, setback lines, reservations, agreements, and other similar matters. The information provided herein should not be relied upon by the requesting party to confirm the existence / non-existence of facts contained herein.

52
900
670 AC

NOTE:
JOG RD: ALL DRAINAGES
AS OR 12.2.36-1751

NOTE:
NOT TO BE REPRODUCED IN ANY FORM EXCEPT BY EXPRESS WRITTEN CONSENT FROM THE PALM BEACH COUNTY PROPERTY APPRAISER
Information shown hereon is compiled from the best available sources and CANNOT be used for surveys or land transfers of any type.



PALM BEACH COUNTY
N-61
PROPERTY APPRAISER

RGE	TWP	SEC	AERIAL
42	42	4	NO

SCALE 1" = 200'
DRAWN BY C. BROWN 10-80
UPDATED

REVISIONS: 08-14-13 31657