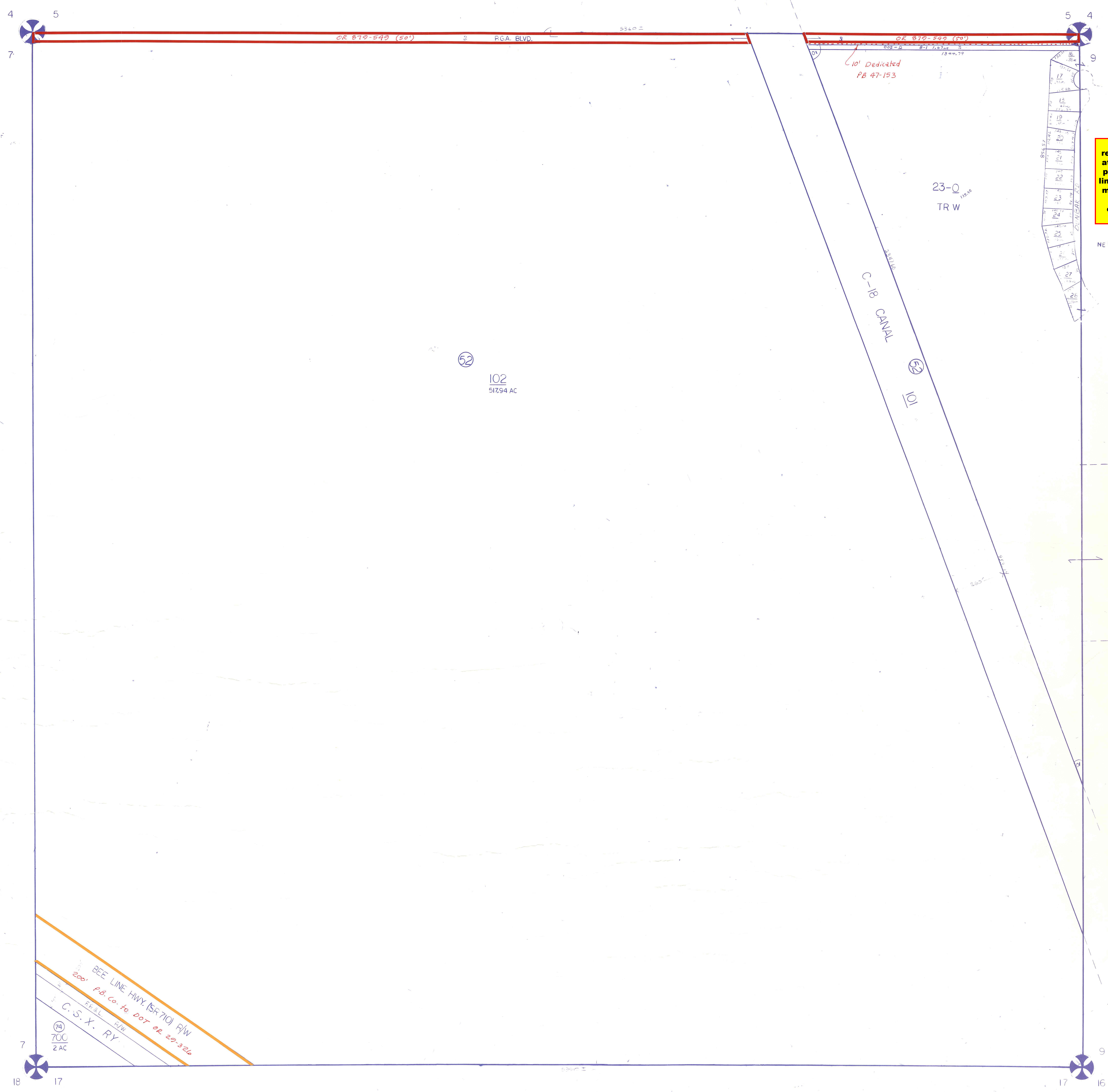


Palm Beach County (County) makes no representation or warranties whatsoever on the attached / enclosed information reflected herein pertaining to easements, rights-of-way, setback lines, reservations, agreements, and other similar matters. The information provided herein should not be relied upon by the requesting party to confirm the existence / non-existence of facts contained herein.

NE 01 PGA RESORT COMMUNITY PL 6 P647P653



NOTE:
 NOT TO BE REPRODUCED IN
 ANY FORM EXCEPT BY EXPRESS
 WRITTEN CONSENT FROM THE
 PALM BEACH COUNTY
 PROPERTY APPRAISER
 Information shown hereon is
 compiled from the best available
 sources and CANNOT be used
 for surveys or land transfers of
 any type.

J-10.

PALM BEACH COUNTY			
N-61			
PROPERTY APPRAISER			
RGE	TWP	SEC	AERIAL
42	42	8	NO 61-100
SCALE		1" = 200'	
DRAWN BY		C. BROWN 9.90	
UPDATED		5-20-88	

DRAWING 44-141 31087