

29-43-42
Next Page

- NE 01 THOUSAND PINES (1977) PB31P233
- W4 02 BREAKERS WEST PL2 (1979) PB36P31
- SE 03 GOLDEN LAKES VILLAGE SEC 14 (1989) PB53P151
- SE 04 GOLDEN LAKES VILLAGE SEC 15 (1989) PB53P153 SEE BLK 3
- SE 05 OAK-LAND PARK (88) PB55P197
- SE 06 GOLDEN LAKES VILLAGE COND-N PH1 (89) SEE BLK 3
- W2 07 BREAKERS WEST PL 16 (90) PB63P166
- SW 08 SUMMER CREEK PB64P160 (91) SEE BLK 3
- NW 09 BREAKERS WEST PL 18 (92) PB67P187
- 10 OKEECHOBEE OFFICE WAREHOUSE (SEE BLK 4)
- NW 11 BREAKERS WEST PL 18 CR (94) PB70P150

NOTE: P.B. FARMS CO PL 3 PB2P45-54
 CODED 42-43-27-05
 BLOCK 2 CODED (C)

NOTE:
 - WEST PENINSULAR TITLE COMPANY vs. P.B. FARMS CO PL 3
 SEE OR 5008-1286: P.B. FARMS CO PL 3

Palm Beach County (County) makes no representation or warrants whatsoever on the attached / enclosed information reflected herein pertaining to easements, rights-of-way, setback lines, reservations, agreements, and other similar matters. The information provided herein should not be relied upon by the requesting party to confirm the existence / non-existence of facts contained herein.

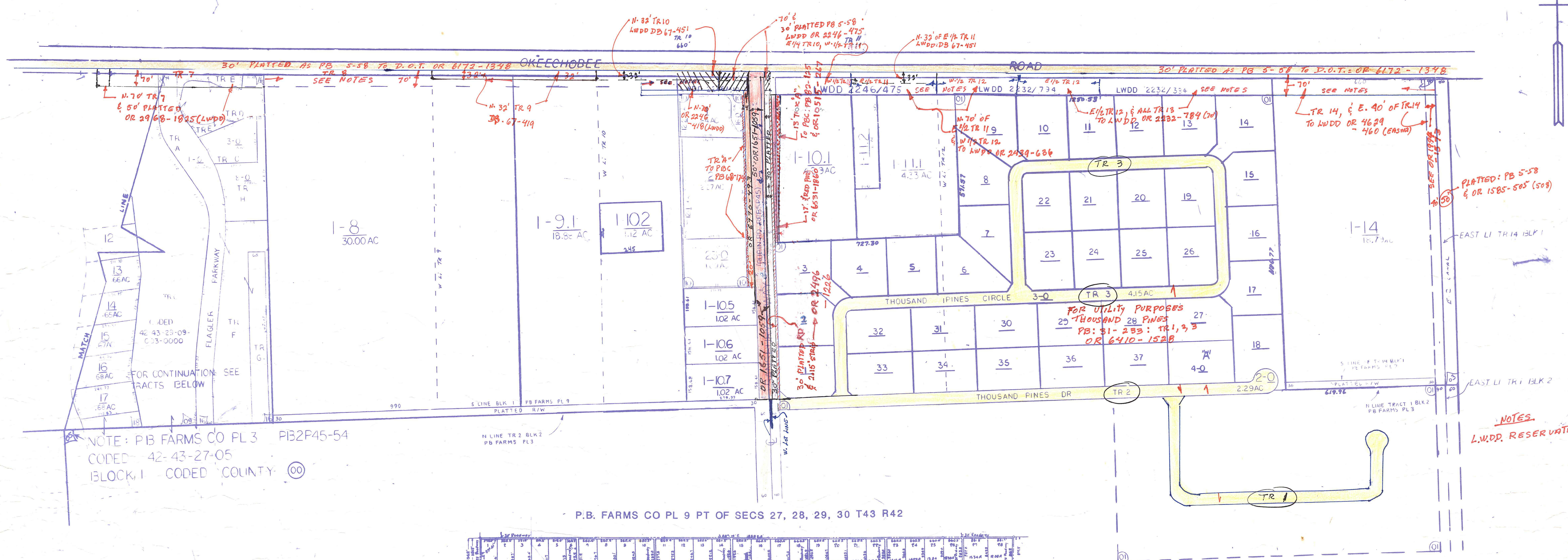
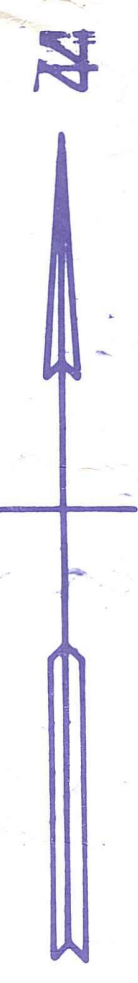
NOTE:
 NOT TO BE REPRODUCED IN ANY FORM EXCEPT BY EXPRESS WRITTEN CONSENT FROM THE PALM BEACH COUNTY PROPERTY APPRAISER
 Information shown hereon is compiled from the best available sources and CANNOT be used for surveys or land transfers of any type.

J-19

PALM BEACH COUNTY
GARY R. NIKOLITS
 PROPERTY APPRAISER

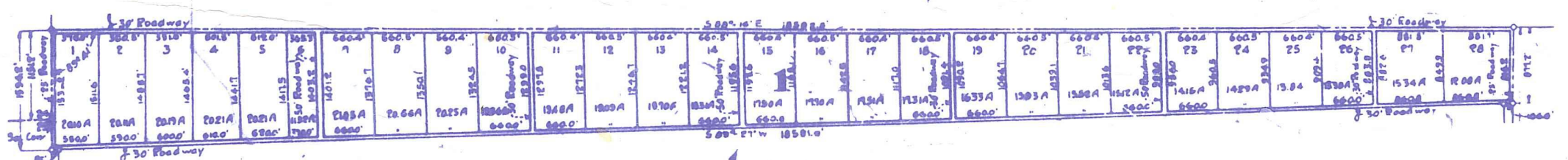
RGE	TWP	SEC	AERIAL
42	43	29	NO 61-27S
SCALE 1" = 200'		BLK 2	
DRAWN BY		CASON B. 12-11-78	
UPDATED		10-19-93	

Palm Beach County (County) makes no representation or warranties whatsoever on the attached / enclosed information reflected herein pertaining to easements, rights-of-way, setback lines, reservations, agreements, and other similar matters. The information provided herein should not be relied upon by the requesting party to confirm the existence / non-existence of facts contained herein.



NOTE: P.B. FARMS CO PL 3 PB2P45-54
 CODED 42-43-27-05
 BLOCK 1 CODED COUNTY 00

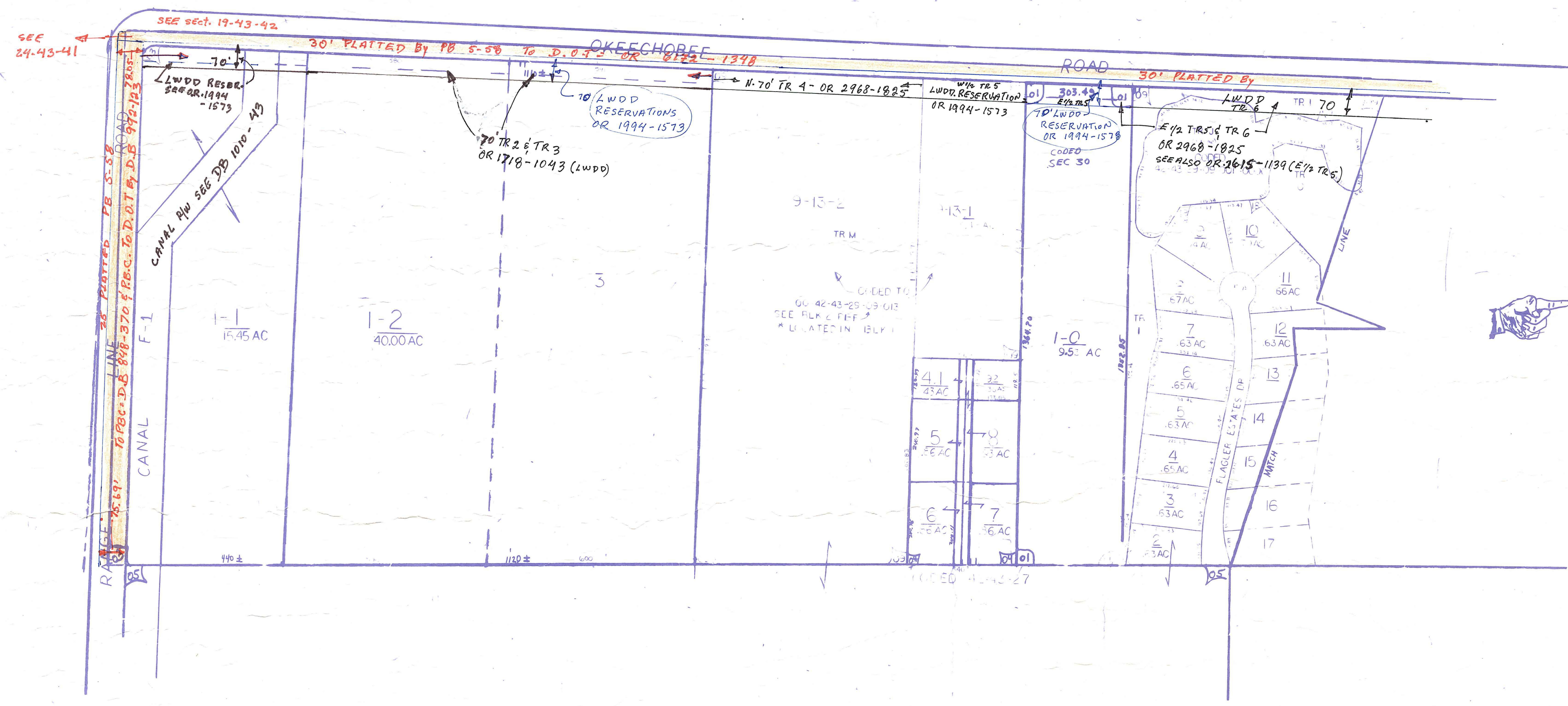
P.B. FARMS CO PL 9 PT OF SECS 27, 28, 29, 30 T43 R42



THIS MAP IS FOR TRS 1 THRU 14 OF BLK 1 P.B. FARMS CO PL 9
 SEE BLK 3 & 4 OF P.B. FARMS CO PL 3 FOR TRS 15 THRU 28.

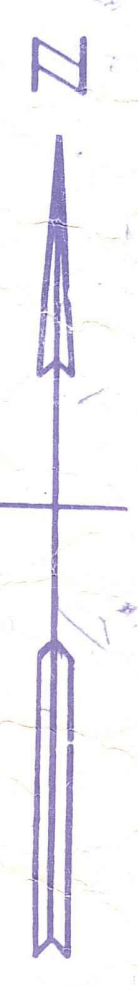
SEC 29 01 THOUSAND PINES (1977) PB31P235
 SEC 29 10 OKEECHOBEE OFFICE WAREHOUSE (92) PB68P174

NOTES:
 L.W.D.P. RESERVATIONS: NORTH 70' TR 10
 THRU 14, & WEST 1/2
 TR 9 THRU 8, & TR
 1, 2, 3, W 1/2 OF TR 5 -
 SEE OR 1974-1578
 1578
 1579
 1580



NOTE: P.B. FARMS CO PL 9 PB5 P58
 CODED 42-43-27-03
 BLOCK 1 CODED COUNTY 00

SEC 30 01 BREAKERS WEST PL 1 (77) PB32P83



NOTE:
 NOT TO BE REPRODUCED IN
 ANY FORM EXCEPT BY EXPRESS
 WRITTEN CONSENT FROM THE
 PALM BEACH COUNTY
 PROPERTY APPRAISER
 Information shown hereon is
 compiled from the best available
 sources and CAN NOT BE used
 for surveys or land transfers of
 any type.

J-78-K-19

PALM BEACH COUNTY
GARY R. NIKOLITS
 PROPERTY APPRAISER

RGE	TWP	SEC	AERIAL
42	43	29/30	27-30 100 2073
SCALE	1" = 200'		
DRAWN BY	CHAS 12/24/75		
UPDATED			