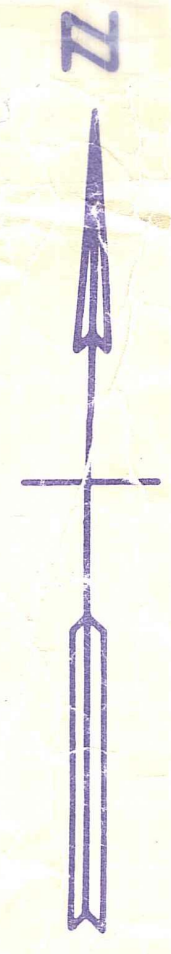


Palm Beach County (County) makes no representation or warrants whatsoever on the attached / enclosed information reflected herein pertaining to easements, rights-of-way, setback lines, reservations, agreements, and other similar matters. The information provided herein should not be relied upon by the requesting party to confirm the existence / non-existence of facts contained herein.



5 1/2 01 WESTWOODS PB34P131
 02 BELRUB INDUSTRIAL PARK (85) PB47P124 SEE BLK 7
 03 BELRUB IND PARK PL 2 (89) PB59P146 SEE BLK 7

NOTES:
 - SOUTHERN BLVD: OR 5834-1042 - DOT TO S.R. WATER MAINS DIST. PORTION LYING S. OF H-CANAL R/W.
 - AGREEMENT TO PROVIDE WATER & SEWAGE FACILITIES AS INDICATED AREAS
 - WEST PENINSULAR TITLE COMPANY V.S. P.B.C. SEE OR 5608-1286 (PLAT) AND P.B. FARMS CO. PAR. #3

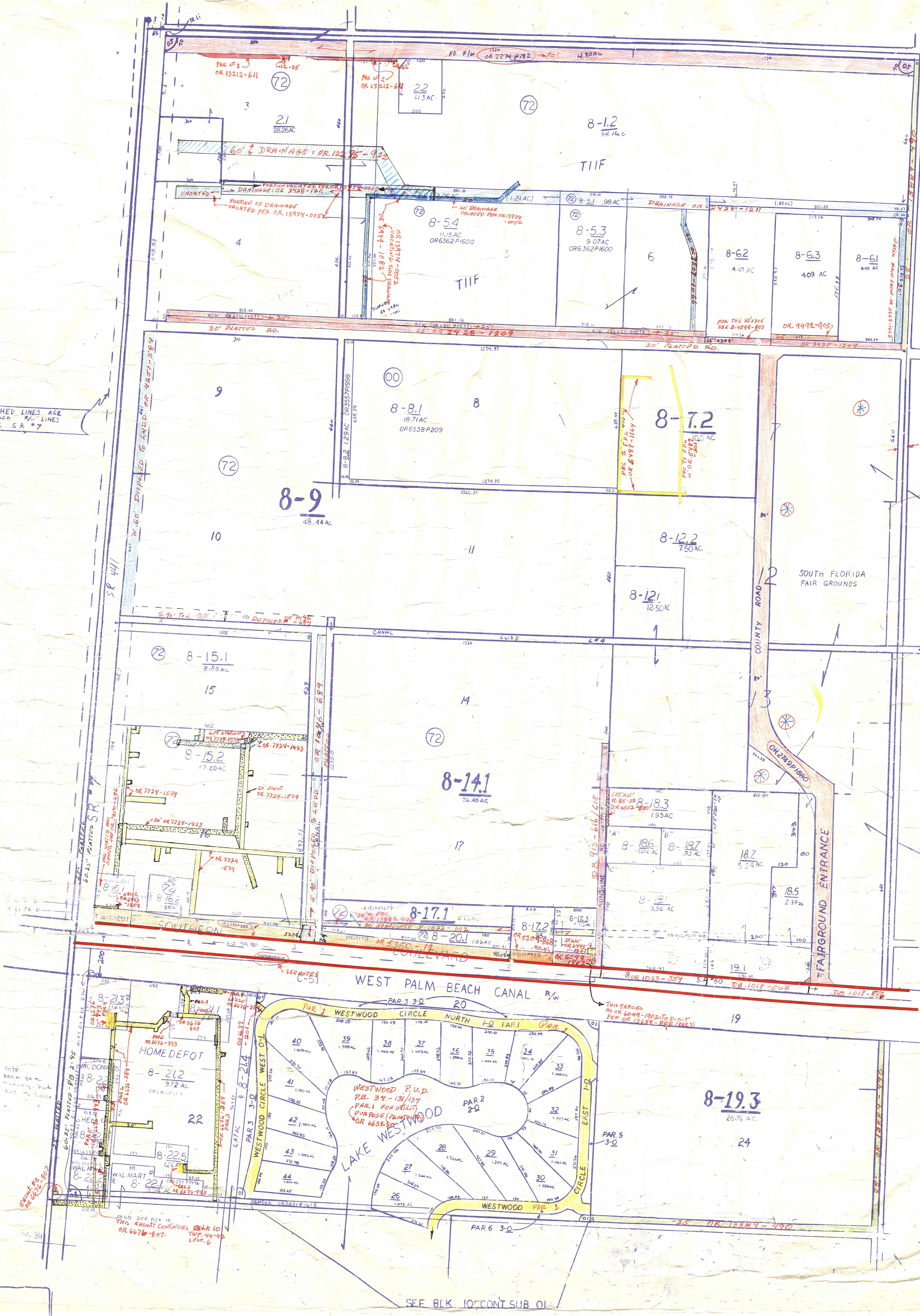
NOTE: PB FARMS CO. PL 3 PB 2 P45-54 CODED 42-43-27-05 BLOCK 08 CODED 00 & VILLAGE OF RPB - 72

C.M.B. 13-490 (6-23-1930)

31-43-42
 6-43-43

PALM BEACH COUNTY
 GARY R. NIKOLITS
 PLATTING ATTORNEY

RGE	TWP	SEC.	AERIAL
42	43	31	NOB0-24
SCALE 1" = 200'		BLK 8	
DRAWN BY		CHECKED BY	
DATE		DATE	



DASHED LINES ARE ASSUMED 5' LINES FOR S.R. #7

NOTE: WEST PALM BEACH CANAL R/W TO BE MAINTAINED BY THE COUNTY

ALSO SEE REF TO THIS PLAT CONTAINING PAR. 10 TWP. 44-45 SEC. 6 OR 6676-807.

SEE BLK 10 CONT. SUB O1