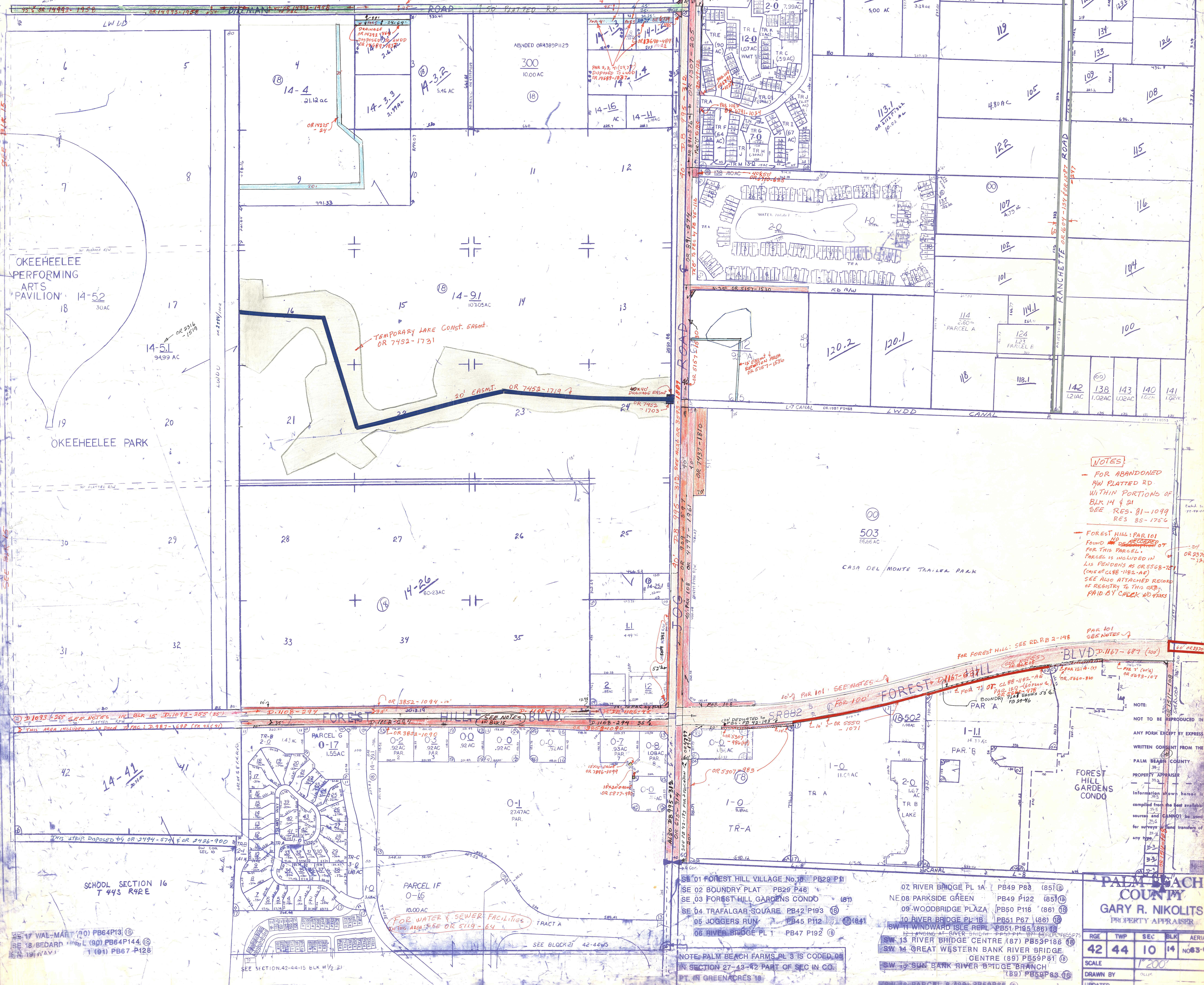


**Palm Beach County (County) makes no representation or warranties whatsoever on the attached / enclosed information reflected herein pertaining to easements, rights-of-way, setback lines, reservations, agreements, and other similar matters. The information provided herein should not be relied upon by the requesting party to confirm the existence / non-existence of facts contained herein.**

W 1/2 - P B FARMS PL 3 BLK 14

E 1/2 - SEC. 10 - ACQ. BY OR 7144-1500 & DISPOSED BY OR 7144-1505



**NOTES**

- FOR ABANDONED RW PLATTED RD WITHIN PORTIONS OF BLK 14 & 21 SEE RES. 81-1099 RES 85-1756
- FOREST HILL: PAR 101 FOUND OR RECORDED FOR THIS PARCEL. PARCEL IS INCLUDED IN LIS PENDING AS OR 5568-701 (CHS# 188-1182-AE) SEE ALSO ATTACHED RECORD OF REGISTRY TO THIS ORS. PAID BY CHECK NO 4303

PAR 101 SEE NOTES

FOR FOREST HILL: SEE RD PB 2-148

FOR 100' FOREST HILL BLVD: SEE NOTES

FOR 100' FOREST HILL BLVD: SEE NOTES

FOR 100' FOREST HILL BLVD: SEE NOTES

NOT TO BE REPRODUCED IN ANY FORM EXCEPT BY EXPRESS WRITTEN CONSENT FROM THE PALM BEACH COUNTY PROPERTY APPRAISER

Information shown herein is compiled from the best available sources and CANNOT be used for surveys and land transfers of any type.

**PALM BEACH COUNTY**  
GARY R. NIKOLITS  
PROPERTY APPRAISER

RGE	TWP	SEC	BLK	AERIAL
42	44	10	14	NO 83-61A
SCALE 1"=200'				
DRAWN BY [Signature]				
UPDATED [Date]				

- SE 01 FOREST HILL VILLAGE No. 16 PB29 P11
- SE 02 BOUNDARY PLAT PB29 P46
- SE 03 FOREST HILL GARDENS CONDO (87)
- SE 04 TRAFALGAR SQUARE PB42 P193 (8)
- 05 JOGGERS RUN PB45 P112 (8)(84)
- 06 RIVER BRIDGE PL 1 PB47 P192 (8)
- 07 RIVER BRIDGE PL 1A PB49 P88 (85)(8)
- 08 PARKSIDE GREEN PB49 P122 (85)(18)
- 09 WOODBRIDGE PLAZA PB50 P118 (86)(18)
- 10 RIVER BRIDGE PL 1B PB51 P67 (86)(18)
- 11 WINDWARD ISLE REPL PB51 P195 (86)(18)
- 12 RIVER BRIDGE CENTER (87) PB53 P186 (8)
- 13 RIVER BRIDGE CENTER (87) PB53 P186 (8)
- 14 GREAT WESTERN BANK RIVER BRIDGE CENTRE (89) PB59 P81 (8)
- 15 SUN BANK RIVER BRIDGE BRANCH (89) PB59 P83 (8)
- 16 PARCEL 8 (89) PB59 P83 (8)

NOTE: PALM BEACH FARMS PL 3 IS CODED 08 IN SECTION 27-43-42 PART OF SEC IN CO. PT. IN GREENACRES 18

17 WAL-MART (20) PB64 P13 (8)

18 BEDARD (90) PB64 P144 (8)

19 NAVY (101) PB67 P128

SCHOOL SECTION 16 T 44S R 42E

PARCEL 1F 0-16 10.00 AC

FOR WATER & SEWER FACILITIES IN THIS AREA SEE OR 5119-64

SEE SECTION 42-44-15 BLK W 1/2 21

PLAT CONTINUED IN SW CORNER