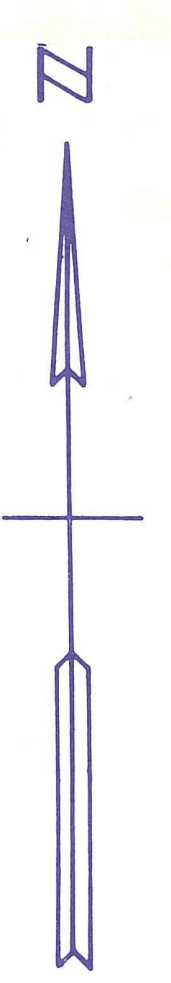
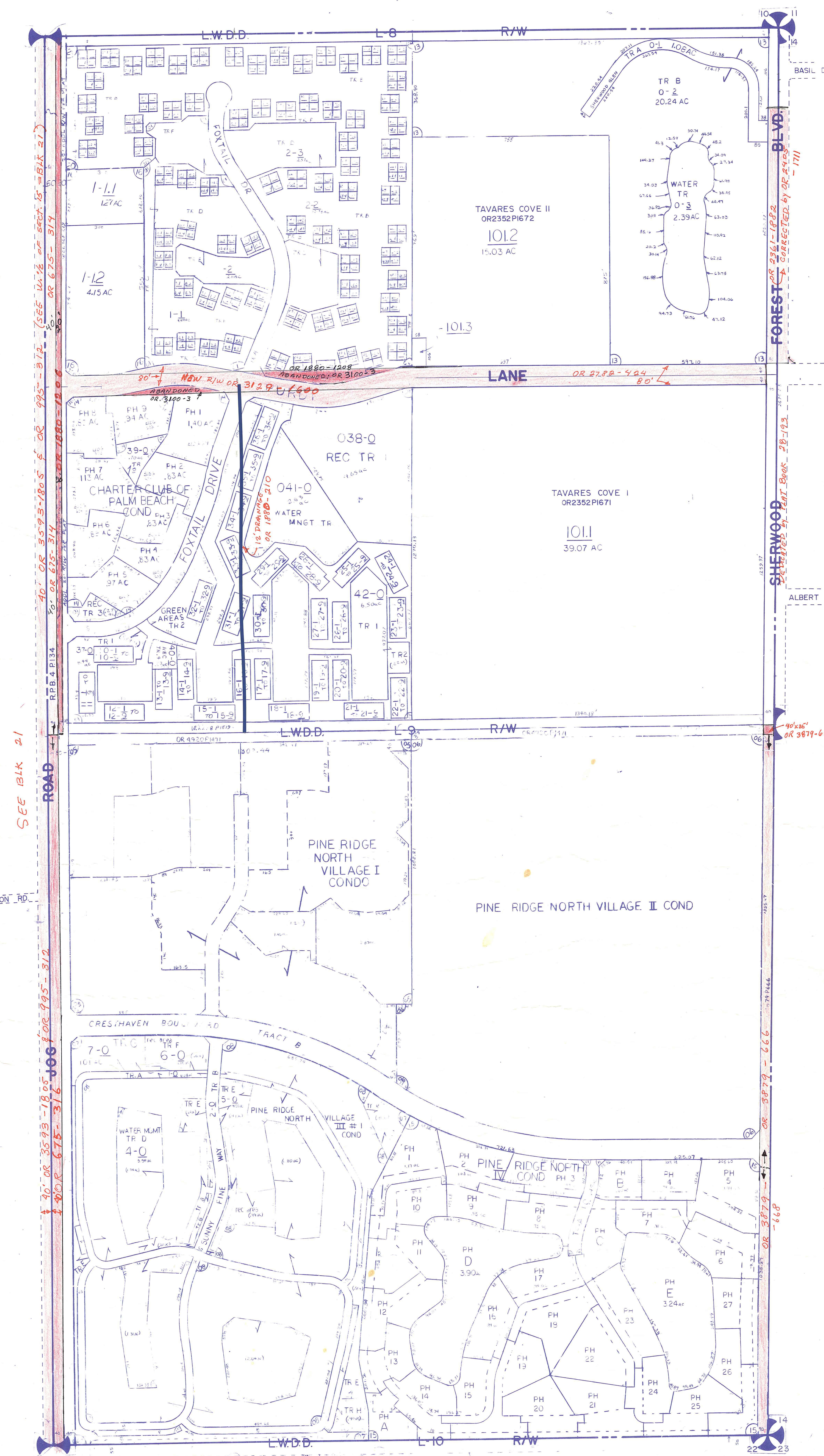


**Palm Beach County (County) makes no representation or warranties whatsoever on the attached / enclosed information reflected herein pertaining to easements, rights-of-way, setback lines, reservations, agreements, and other similar matters. The information provided herein should not be relied upon by the requesting party to confirm the existence / non-existence of facts contained herein.**



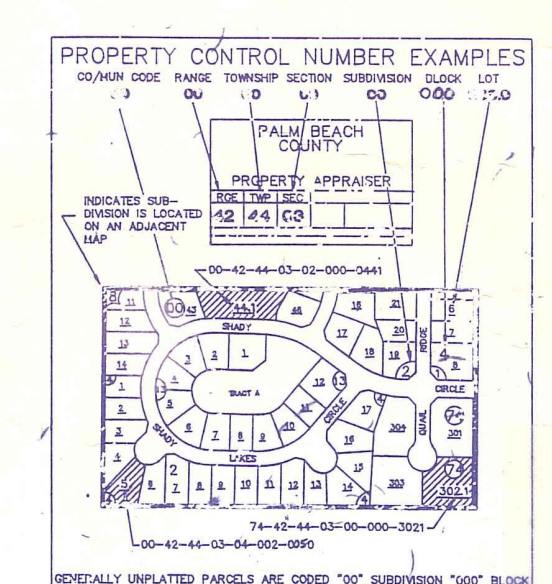
NOTE: For W 1/2 of section 15 see BLK 21 (E 1/2) of PALM BEACH FARMS CO. PL. 3



- 01 PINES PL I PB36PI63 (16)
- SE 02 PINERIDGE NORTH VILLAGE I (1962) P343P74 (17)
- SE 03 PINERIDGE NORTH VILLAGE II (1962) PB44P98 (18)
- SE 04 PINERIDGE NORTH VILLAGE II A (1963) PB45F1 (19)
- SE 05 PINERIDGE NORTH VILLAGE I CONDO (1983) (64) (20)
- SE 06 PINERIDGE NORTH VILLAGE II CONDO (1983) (64) (21)
- SE 07 PINERIDGE NORTH VILLAGE III (1984) PB45PI24 (22)
- SE 08 PINERIDGE NORTH VILLAGE III #1 CONDO (1984) (23)
- NE 09 CHARTER CLUB OF PALM BEACH (1982) PB48PI14 (24)
- 10 RIVER BRIDGE PL I-B - SEE W 1/2 (BLK 21)
- SE 11 PINE RIDGE NORTH VILLAGE IV PB51P81 (25)
- 12 CROSSWINDS AT RIVER BRIDGE - SEE BLK 21
- NE 13 SHERWOOD GLEN PB51PI68 (26)
- NE 14 CHARTER CLUB OF PALM BEACH CONDO (27)
- SE 15 PINE RIDGE NORTH VILLAGE IV CONDO (28) (29) (30)
- NE 16 PINES PLAZA (31) PB53PI83 (32)
- NW 17 LANDINGS AT RIVER BRIDGE REPL (33) PB55P75 (34)
- 18 HARBOUR POINTE AT RIVER BRIDGE CONDS (35)
- W 1/2 NW 19 CROSSWINDS AT RIVER BRIDGE CONDO (37) (38)
- NE 20 THE PINES PL 2 PB38F17 (39) (40)
- NW 21 ISLAND OF RIVER BRIDGE (41) PB56PI20 (42) SEE W 1/2 BLK 21
- NW 22 RIVER BRIDGE PL 2 (43) PB56PI97 (44) SEE W 1/2 BLK 21
- 23 RIVER BRIDGE PL 4A - SEE BLK 21
- 24 RIVER BRIDGE PL 2 REPL PAR 2C - SEE BLK 21
- 25 RIVER BRIDGE PL 2 REPL PAR 2A - SEE BLK 21
- SW 26 RIVER BRIDGE PUD PL 4B (91) PB67P26 - SEE BLK 21
- SUB 27 NOT USED
- NW 28 RIVER BRIDGE PAR 2F-PL 1 (91) PB67P146 - SEE BLK 21
- NW 29 RIVER BRIDGE PUD PL 2D (92) PB68P34 - SEE BLK 21
- 30 RIVER BRIDGE PL 2E (93) PB69P155 - SEE BLK 21
- 31 RIVER BRIDGE PL 3A (93) PB69P157 - SEE BLK 21
- 32 RIVER BRIDGE PAR 2F PL 2 (93) PB69P159 - SEE BLK 21
- 33 RIVER BRIDGE PUD PL 3C (93) PB70P8 - SEE BLK 21
- 34 RIVER BRIDGE PUD PL 3B (93) PB70P31 - SEE BLK 21

NOTE: Part of section 15 is in the TOWN OF GREENACRES coded 18. Remainder of section is in the COUNTY coded 00.

NOTE:  
NOT TO BE REPRODUCED IN ANY FORM EXCEPT BY EXPRESS WRITTEN CONSENT FROM THE PALM BEACH COUNTY PROPERTY APPRAISER  
Information shown hereon is compiled from the best available sources and CANNOT be used for surveys or land transfers of any type.



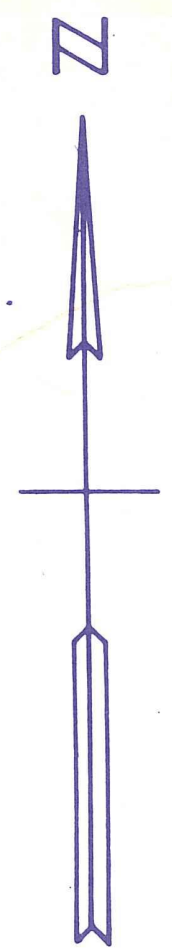
**PALM BEACH COUNTY**  
**GARY R. NIKOLITS**  
PROPERTY APPRAISER

36	37	38	39	40	41	42	43	44	45	46	47	48	49	50	51	52	53	54	55	56	57	58	59	60
1	8	5	4	3	2	1	6																	
12	7	8	9	10	11	12	7																	
13	18	17	16	15	14	13	18																	
24	19	20	21	22	23	24	19																	
25	30	29	28	27	26	25	30																	
36	31	32	33	34	35	36	31																	
1	8	5	4	3	2	1	6																	
RGE	TWP	SEC					AERIAL																	
42	44	15	E <sub>2</sub>				NO63-64																	
SCALE 1"=200'																								
DRAWN BY OLLIS 6-22-78																								
UPDATED 8-1-83																								



SEE BLK 14  
PB FARMS

**Palm Beach County (County) makes no representation or warranties whatsoever on the attached / enclosed information reflected herein pertaining to easements, rights-of-way, setback lines, reservations, agreements, and other similar matters. The information provided herein should not be relied upon by the requesting party to confirm the existence / non-existence of facts contained herein.**



- NE 10 RIVER BRIDGE PL 1B PB51P67 (66) (15)
- NE 12 CROSSWINDS AT RIVER BRIDGE SEE EAST 1/2 (85) PB51P110 (15)
- NW 17 LANDINGS AT RIVER BRIDGE REPL (8) PB55P75 (15)
- NE 18 HARBOUR POINTE AT RIVER BRIDGE COND PH 1 (267) PH 3-7 (69) PH 5 (14) (15)
- NE 19 CROSSWINDS AT RIVER BRIDGE COND (87) (88) (15)
- NW 21 ISLAND OF RIVER BRIDGE (86) PB56P120 (15)
- NW 22 RIVER BRIDGE PL 2 (88) PB56P197 (15)
- SW 23 RIVER BRIDGE PL 4A (85) PB51P27 (15)
- NW 24 RIVER BRIDGE PL 2 REPL PAR 2C (83) PB51P123 (15)
- NW 25 RIVER BRIDGE PL 2 REPL PAR 2A (84) PB51P35 (15)
- SW 26 RIVER BRIDGE PUD PL 4B (91) PB67P26
- SUB 27 NOT USED
- NW 28 RIVER BRIDGE PAR 2F PL 1 (91) PB67 P146
- NW 29 RIVER BRIDGE PUD PL 2D (92) PB68P34
- NW 30 RIVER BRIDGE PL 2 E (93) PB69P155
- SW 31 RIVER BRIDGE PL 3 A (93) PB69P157
- NW 32 RIVER BRIDGE PAR 2F PL 2 (93) PB69P159
- NW 33 RIVER BRIDGE PUD PL 3C (93) PB70P8
- NW 34 RIVER BRIDGE PUD PL 3B (93) PB70 P31

NOTES:  
- \* WATER & SEWER FACILITIES IN ALL THOSE AREAS: B. 5119-64

NOTE: Only Subs Lyg Within Blk 21 Of PB Farms PL3 Are Listed  
Also See E1/2 42-44-15

NOTE: Part of Block 21 is in the TOWN of GREENACRES coded 18  
Remainder of block is in the COUNTY coded 00

NOTE: All of Block 21 is in PALM BEACH FARMS CO. PL 3 coded 05 in 27-43-42

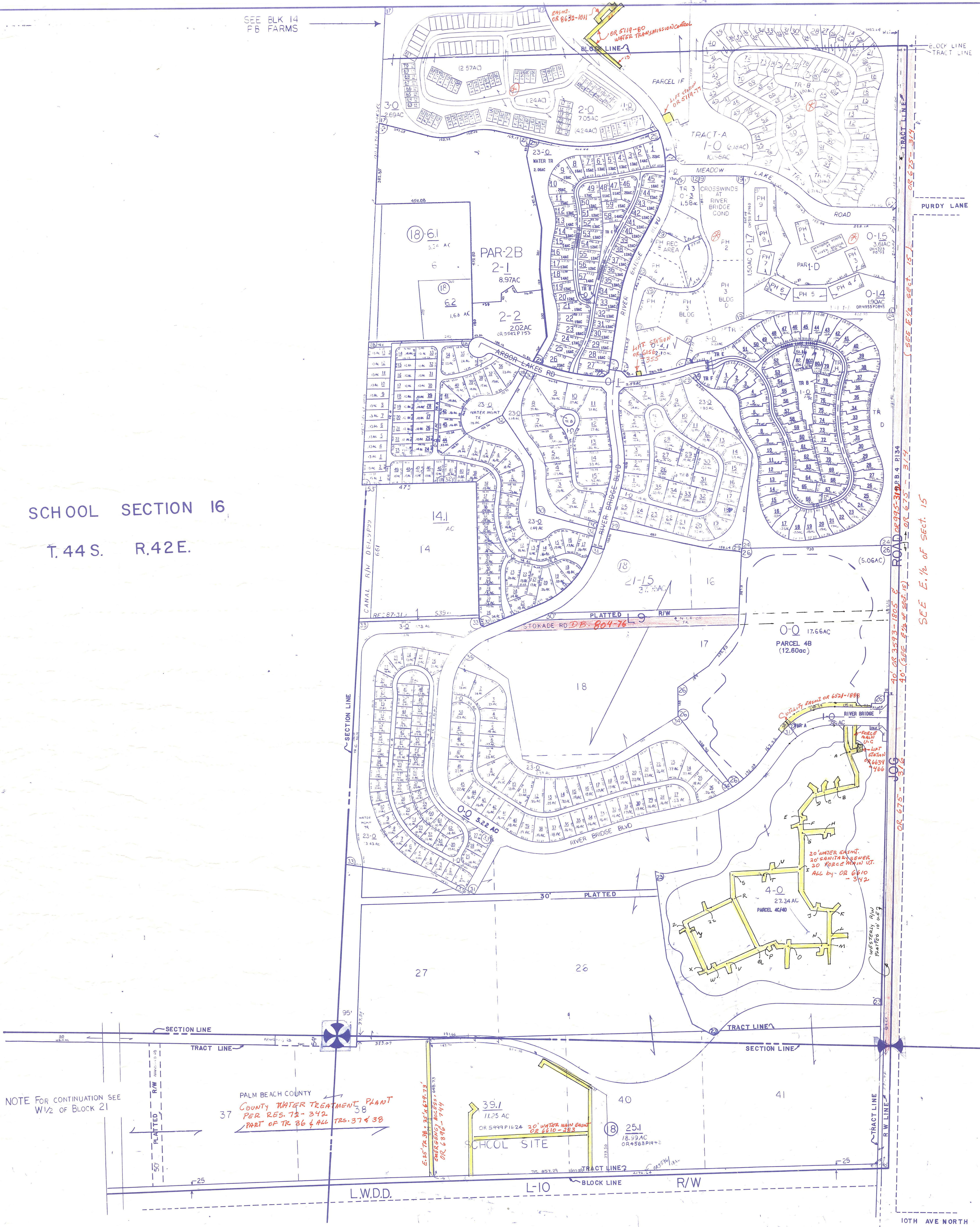
NOTE:  
NOT TO BE REPRODUCED IN ANY FORM EXCEPT BY EXPRESS WRITTEN CONSENT FROM THE PALM BEACH COUNTY PROPERTY APPRAISER  
Information shown herein is compiled from the best available sources and CANNOT be used for surveys or land transfers of any type.

H-23

**PALM BEACH COUNTY**  
**GARY R. NIKOLITS**  
PROPERTY APPRAISER

RGE	TWP	SEC	BLK	AERIAL
42	44	15	21	NO 6364A

SCALE 1"=200'  
DRAWN BY RUSINKO 8-23-79  
UPDATED



SCHOOL SECTION 16  
T.44S. R.42E.

NOTE FOR CONTINUATION SEE  
W1/2 OF BLOCK 21

PALM BEACH COUNTY  
COUNTY WATER TREATMENT PLANT  
PER RES. 72-342  
PART OF TRS. 37 & 38

39.1  
11.25 AC  
OR 5499 P1624 20' WATER MAIN EASEMENT  
OR 6610-342

25.1  
18.99 AC  
OR 4568 P1000

SCHOOL SITE

10TH AVE NORTH