

Palm Beach Farms Co. Pl. 3 - BLOCK 15

Palm Beach Farms Co. Pl. 3
BLOCK 14

N

Palm Beach County (County) makes no representation or warranties whatsoever on the attached / enclosed information reflected herein pertaining to easements, rights-of-way, setback lines, reservations, agreements, and other similar matters. The information provided herein should not be relied upon by the requesting party to confirm the existence / non-existence of facts contained herein.

(T.I.F.)
PALM BEACH COUNTY
SOIL LAB SITE
100
17.50 AC

T.I.F.
101
272.90 AC

103
59.42 AC

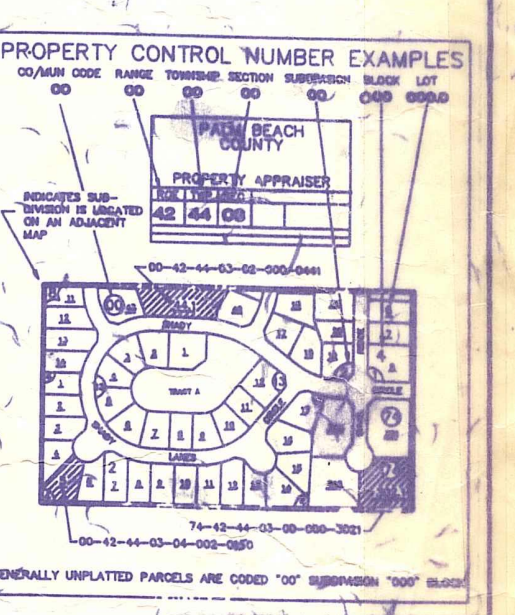
T.I.F.
502
88.60 AC

SEE BLK. 21
W. 1/2

T.I.F.
501
203.50 AC

APPROX. 1960
TO L.W.D.
OR 2607-654

PALM BEACH COUNTY
503
3.57 AC
RES. 74



36	31	32	33	34	35	36	31
1	6	5	4	3	2	1	8
12	7	8	9	10	11	12	7
13	16	17	18	15	14	13	18
24	19	20	21	22	23	24	19
25	30	29	28	27	26	25	30
36	31	32	33	34	35	36	31
1	6	5	4	3	2	1	8

NOTE:
NOT TO BE REPRODUCED IN ANY FORM EXCEPT BY EXPRESS WRITTEN CONSENT FROM THE PALM BEACH COUNTY PROPERTY APPRAISER
Information shown hereon is compiled from the best available sources and CANNOT be used for surveys or land transfers of any type.

PALM BEACH COUNTY

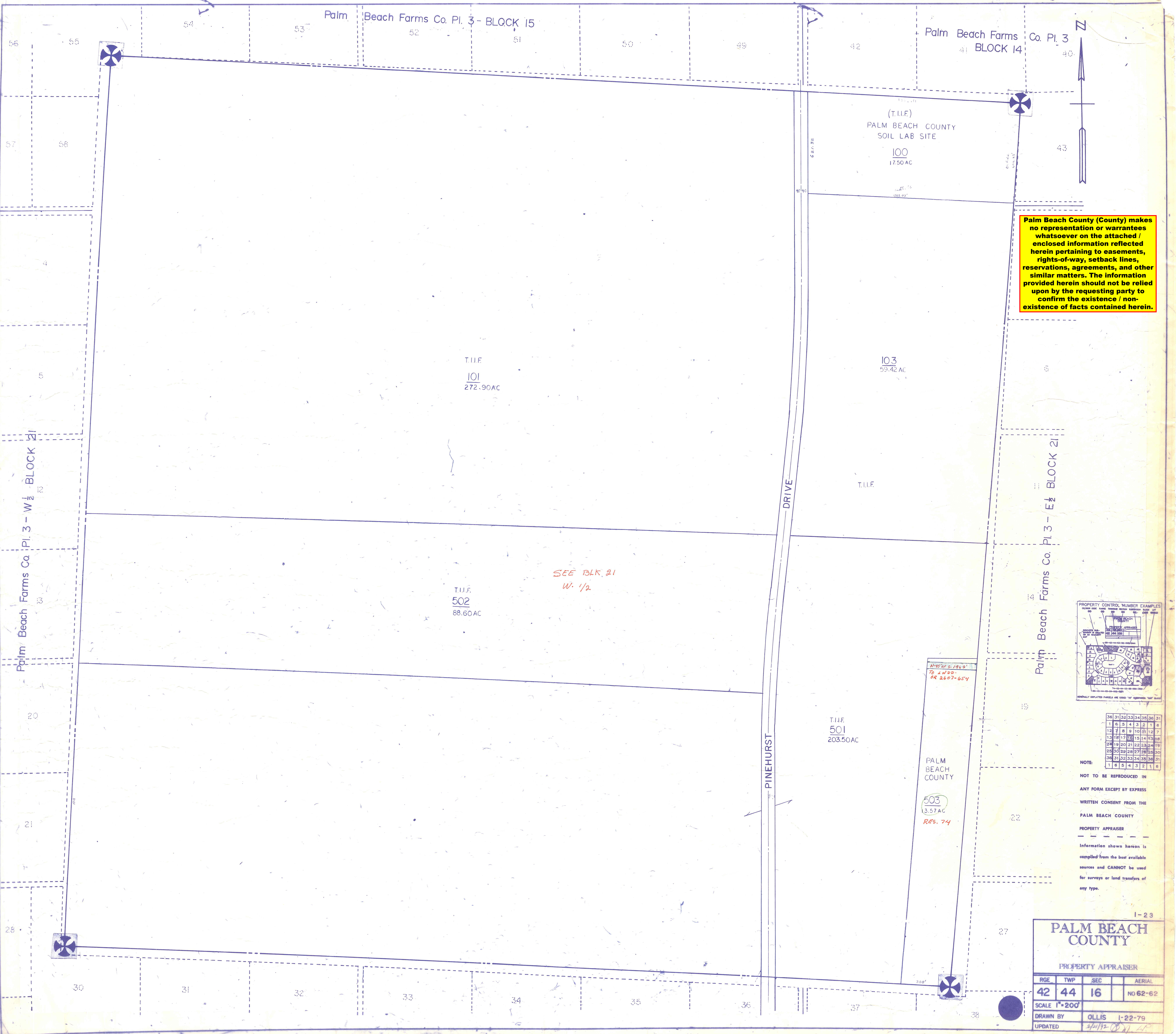
PROPERTY APPRAISER

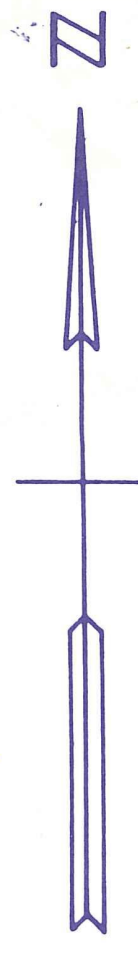
RGE	TWP	SEC	AERIAL
42	44	16	NO 62-62
SCALE 1"=200'			
DRAWN BY		OLLIS	1-22-79
UPDATED		4/21/92	

Palm Beach Farms Co. Pl. 3 - W 1/2 - BLOCK 21

Palm Beach Farms Co. Pl. 3 - E 1/2 - BLOCK 21

PINEHURST DRIVE





Palm Beach County (County) makes no representation or warranties whatsoever on the attached / enclosed information reflected herein pertaining to easements, rights-of-way, setback lines, reservations, agreements, and other similar matters. The information provided herein should not be relied upon by the requesting party to confirm the existence / non-existence of facts contained herein.

SCHOOL SECTION 16

T.44S. R.42E.

ACR CH 24-000 pag 354
CERT. 1241-1242
ACR CH 18,875 - pag III
CR. 3154 + 3155
Disposd. OR 2494-758
OR 2494-576

NOTES:
- TR RD-21-28 THRU 35 of PART of TR 36
WEST of PINEHURST DR. less 5,300' (THRU TRS 29 TO 34)
HAL DISPOSED PER OR 2426-900
SUPERSEDED by OR 2494-579
- FOR VACATED R/W ON BLK 21 SEE OR 2068-639
RES. 72-435

NOTE: All of W 1/2 of Block 21 is in the County coded 00.

NOTE: All of Block 21 is in PALM BEACH FARMS CO. PL. 3 coded 05 in 27-43-42.

NOTE:
NOT TO BE REPRODUCED IN ANY FORM EXCEPT BY EXPRESS WRITTEN CONSENT FROM THE PALM BEACH COUNTY PROPERTY APPRAISER
Information shown hereon is compiled from the best available sources and CANNOT be used for surveys or land transfers of any type.

NOTE: FOR CONTINUATION SEE E 1/2 OF BLOCK 21

PALM BEACH COUNTY
GARY R. NIKOLITS
PROPERTY APPRAISER

RGE	TWP	SEC	BLK	AERIAL
42	44	16	W 1/2 21	NO 62-62A
SCALE 1"=200'				
DRAWN BY OLLIS I-18-79				
UPDATED 2-21-92 LP gm				

