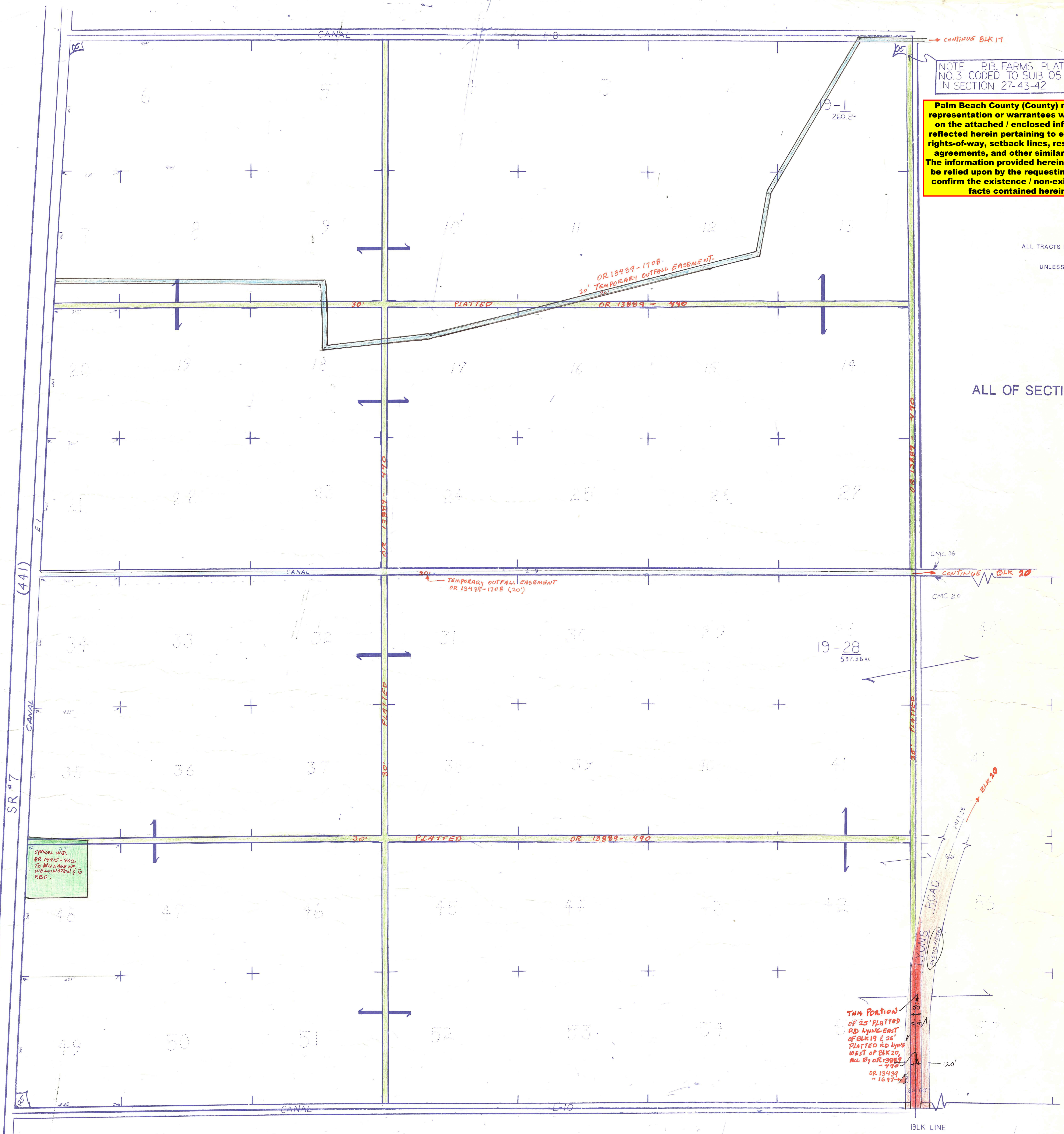


NOTE: P.B. FARMS PLAT NO. 3 CODED TO SUB 05 IN SECTION 27-43-42

Palm Beach County (County) makes no representation or warranties whatsoever on the attached / enclosed information reflected herein pertaining to easements, rights-of-way, setback lines, reservations, agreements, and other similar matters. The information provided herein should not be relied upon by the requesting party to confirm the existence / non-existence of facts contained herein.

ALL TRACTS IN BLK 19 ARE 660 BY 660
UNLESS OTHERWISE NOTED

ALL OF SECTION IN COUNTY (00)



SPECIAL W.D. OR 1415-400 TO WILLIAM W. WERHUNSTON & CO. REC.

TWO PORTION OF 25' PLATTED RD LYING EAST OF BLK 19 & 26' PLATTED RD LYING WEST OF BLK 20, ALL BY OR 13889-490 OR 13439-1708-1697

NOTE:
NOT TO BE REPRODUCED IN ANY FORM EXCEPT BY EXPRESS WRITTEN CONSENT FROM THE PALM BEACH COUNTY ASSESSOR.
Information shown hereon is compiled from the best available sources and CANNOT be used for surveys or land transfers of any type.

K-23

PALM BEACH COUNTY				
PROPERTY APPRAISER				
RGE	TWP	SEC	BLK	AERIAL
42	44	18	19	NO 60-67A
SCALE		1"=200'		
DRAWN BY		OLLIS 2/27/72		
UPDATED		3-8-89 LP		

BRUNING 44-141-1008