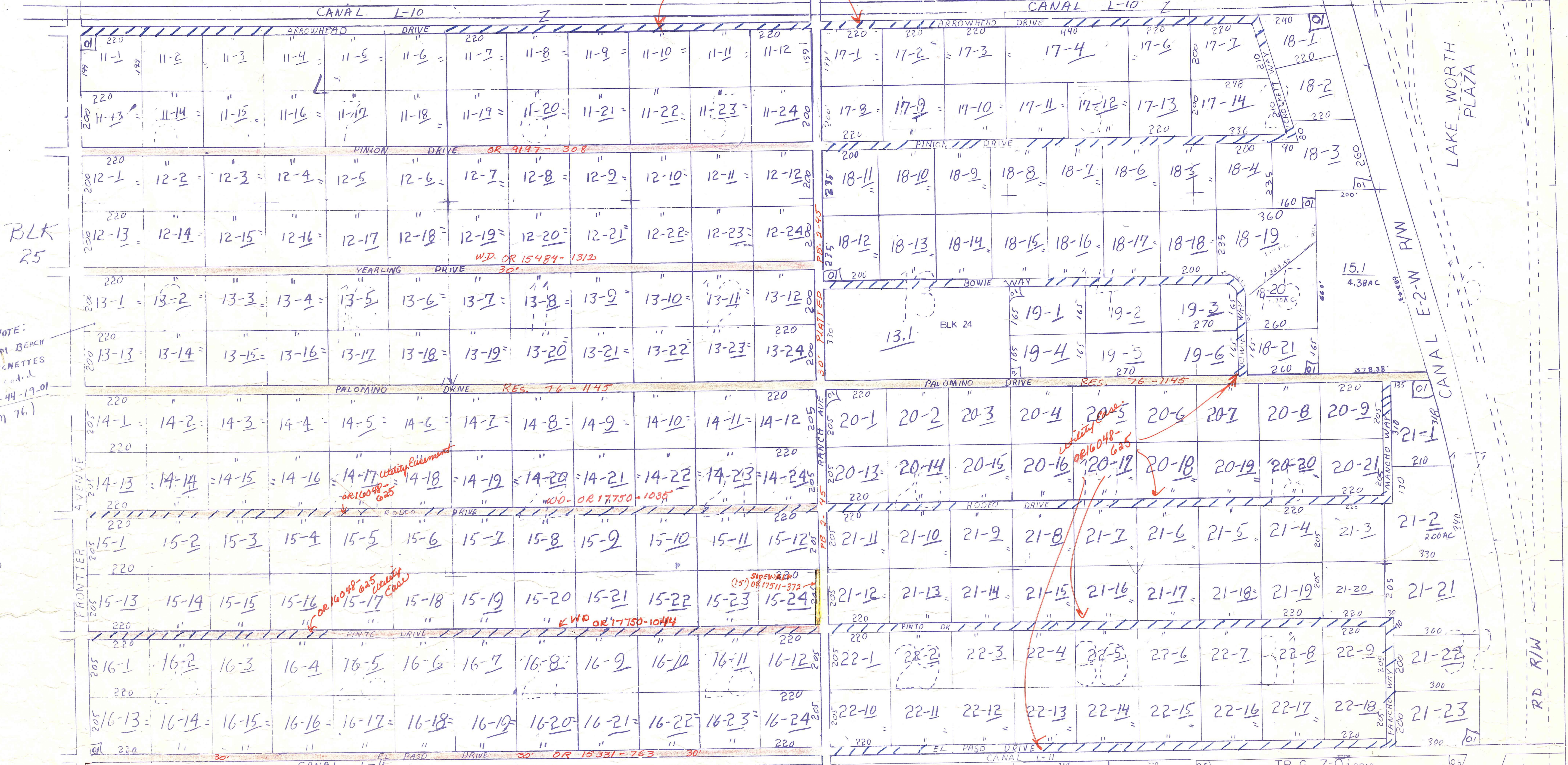


Utility Easements
111 OR 16048-620



BLK 25

NOTE:
PALM BEACH
RANCHETTES
42-44-19-01
(AM 76)

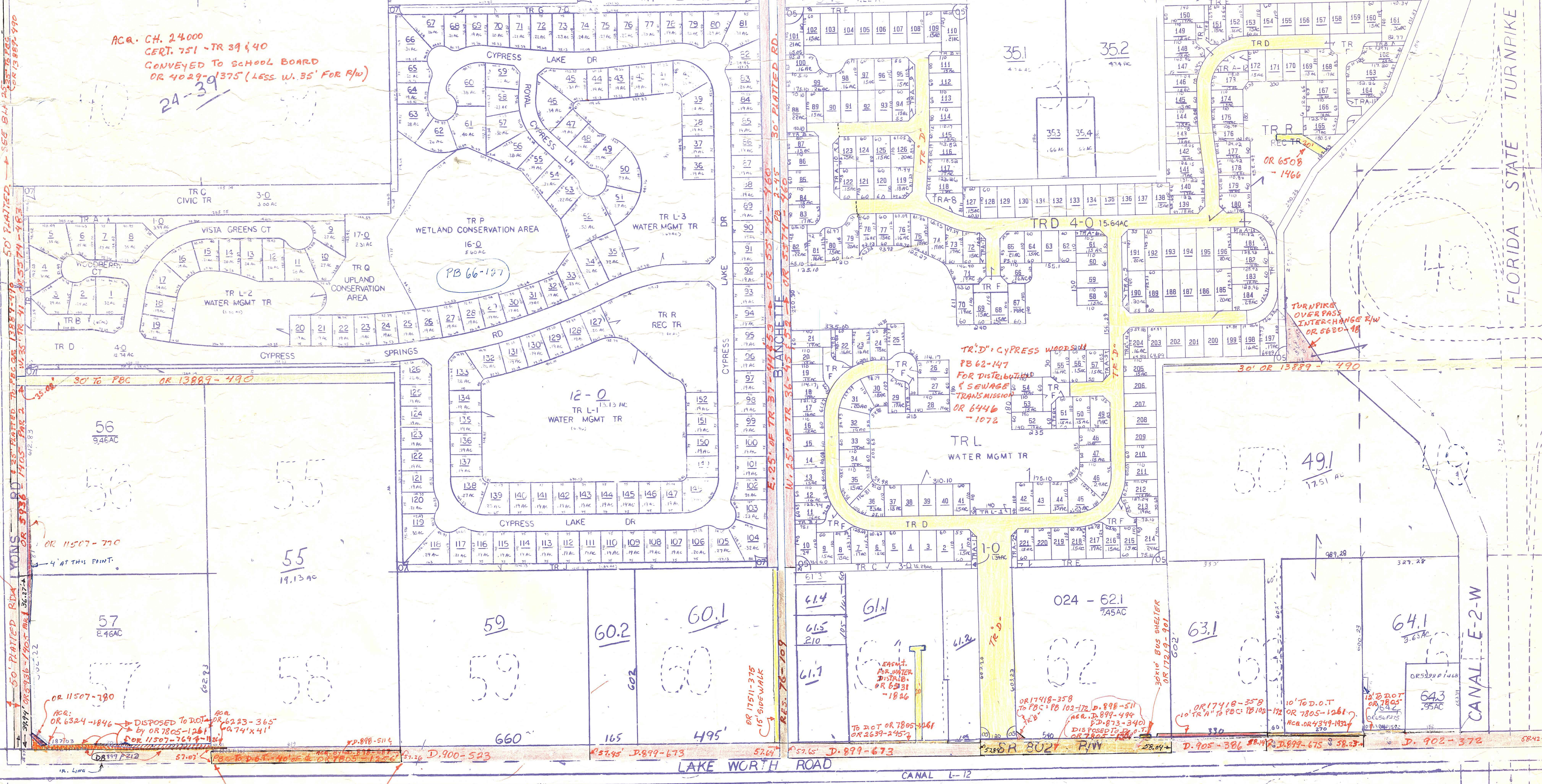
- 00-42-44-20
- 01 PALM BCH NATL GOLF + COUNTRY CLUB
EST NO.1 PP27 P144
- 02 PEBBLE BEACH ADD/ AM 83-64-11-23
- SW 03 GARDENS OF WILLOW BEND PL NO 9 PB49P127
SW 04 WILLOW BEND PB49P132
- SE 05 CYPRESS WOODS 2 (90)11621147
- SE 06 ST ANDREWS GLEN AT PALM BCH HALL 1147

NOTE: ALL OF SEC 14
PALM BEACH FARMS 14.3
CODED 65 IN SEC 21-43-42
AND IS IN THE COUNTY (100)
ALSO, E 1/2 OF SEC HAS F-W
TRACT LINES WHICH ARE 60'

NOTES
WEST PENINSULAR TITLE COMPANY
VS. PALM BEACH COUNTY: SEE OR 3608-286
AND ALSO PALM BEACH FARMS CO. P.L. N. 3
MAP SHOWING RDS INVOLVED IN THIS
CASE.

Palm Beach County (County) makes no representation or warranties whatsoever on the attached / enclosed information reflected herein pertaining to easements, rights-of-way, setback lines, reservations, agreements, and other similar matters. The information provided herein should not be relied upon by the requesting party to confirm the existence / non-existence of facts contained herein.

ACR. CH. 24000
CERT. 751 - TR 39 & 40
CONVEYED TO SCHOOL BOARD
OR 40289-1375 (LESS W. 55' FOR R/W)



20-44-42
To
27-44-42

PALM BEACH COUNTY
GARY R. NIKOLITS
PROPERTY APPRAISER

RGE	TWP	SEC	BLK	AERIAL
42	44	20	24	NOB-63A

SCALE: 1"=200'
DRAWN BY: CMS
UPDATE:

D. 898-687 - TO PBC
57.07 W. END OF TR 58
(57.26' E. END OF TR 58)