

Palm Beach County (County) makes no representation or warranties whatsoever on the attached / enclosed information reflected herein pertaining to easements, rights-of-way, setback lines, reservations, agreements, and other similar matters. The information provided herein should not be relied upon by the requesting party to confirm the existence / non-existence of facts contained herein.

NOTE
ALL LOT DIMENSIONS TO CENTER LINE OF ROAD - SECTION 12

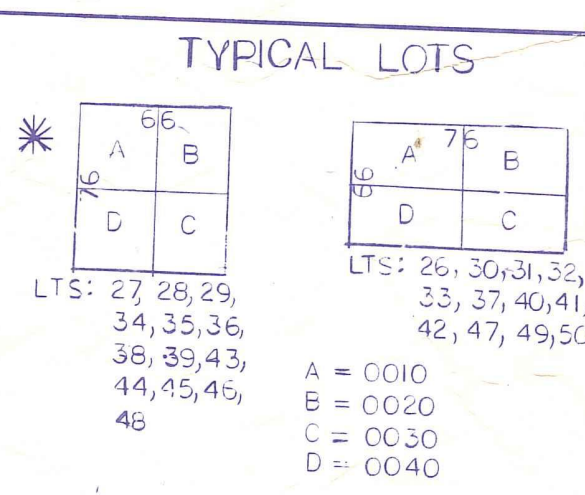
NOTES:
 * BILL OF SALE FROM AMERICAN COMMUNITY SYSTEMS INC. FOR ON SITE (BOTH) BUTTWOOD PLAT 1 & 2, WATER DISTRIBUTION SYSTEM TO PDC. OR 4372-1537.
 * SUBORDINATION OF UTILITY INTEREST BTWN PDC & FPL. OR 5182-1430/35.

LAKE WORTH RD:
 OT. CASE NO 76-2836 GA (4) OF X OR. 2584-781

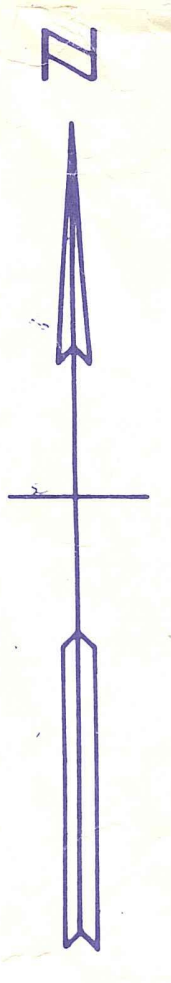
LOTS ARE NOT TO SCALE

PARTS IN COUNTY - 00
 PARTS IN GREENACRES - 18

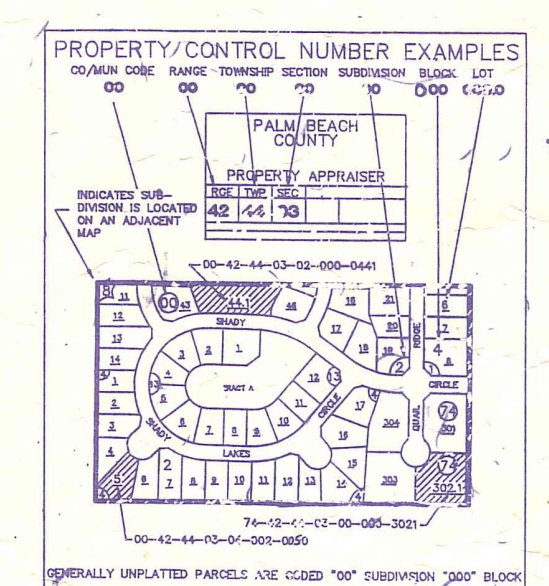
TO FIND SUBS THAT ARE NOT SHOWN REFER TO BLOCK 22 OF THE PALM BEACH FARMS -



- PART ABANDONED OR1952 P1969
- SW01 PLAT OF PINECREST MOBILE HOME ESTATES PB 26-229
- SW02 POINCIANA PLACE PHASE I PB 30-91
- SW03 " " CONDOS PB 31-191
- SW04 RAMBLEWOOD (1977) PB 31-214
- NE06 HEATHER ESTATES (1977) PB 33-127
- NE06 SEVEN SPRINGS PL I (1978) PB 33-127
- SW07 POINCIANA PLACE CONDO A (1979) B (1979)
- SW08 " " " PHASE I (1979)
- REPLAT (1979) PB 34-160
- SW09 SUNCREST RIDGE SECT. 1 (CODED 09 IN 42-43-27) AM 24
- SW10 POINCIANA PLACE PHASE II-A (1979) PB 35-54
- SW11 RAMBLEWOOD II (1979) PB 35-78
- NE12 BUTTWOOD PLAT I (1979) PB 35-113 18
- NW13 CHICKASAW MANOR (1979) PB 35-189 18
- NW14 CHICKASAW MANOR UNIT TWO (21) PB 35-189 18
- NW15 AMBASSADORS T COND (1979) (19)
- NW16 POINCIANA PLACE PHASE II C (1979) (19)
- NW17 BARCLAY AT POINCIANA COND (1979) (19)
- NW18 CARLISLE AT POINCIANA COND (1979) (19)
- NW19 LORCHESTER AT POINCIANA COND (1979) (19)
- NW20 POINCIANA PLACE PHASE IIIA UNIT (21) (19)
- NW21 POINCIANA PLACE PHASE IIIB TWIN (1979) (19)
- NW22 ESSEX AT POINCIANA COND (1979) (19)
- NW23 POINCIANA LAKES BLDG AIF COND (1979) (19)
- NW24 LUCERNE PARK PLAT NO 1 (24) PHASE I (1979) (19)
- NW25 GRAMERCY AT POINCIANA COND (1979) (19)
- NW26 LUCERNE PARK COND (1979) (19)
- NW27 POINCIANA PLAZA PHASE II (1979) (19)
- NW28 SEVEN SPRINGS PLAT NO 2 (1979) (19)
- NW29 VILLAGES OF WOODLAKE PL 1 (1979) (19)
- NW30 VILLAGES OF WOODLAKE PL 2 (1979) (19)
- NW31 VILLAGES OF WOODLAKE PL 3 (1979) (19)
- NW32 VILLAGES OF WOODLAKE PL 4 (1979) (19)
- NW33 VILLAGES OF WOODLAKE PL 5 (1979) (19)
- NW34 TOWN CLUB OF GREENACRES PHASE I (1979) (19)
- NW35 LUCERNE PARK NO 2 PB 49 PB 35 - BLK 22
- NW36 GREENACRES PLAZA PB 50 PB 16 - BLK 22
- NW37 HARMICH COURTS PB 51 PB 200 - BLK 22
- NW38 BUTTWOOD PLAZA PB 52 PB 29 (19)
- NW39 LUCERNE PARK PL 3 - BLK 22
- NW40 BARCLAY SQUARE (7) PB 53 PB 135 (19)
- NW41 POINCIANA PLACE PHASE II C REPL PB 54 PB 25 - BLK 22
- NW42 LAKE WORTH WILLOW CORP CENTER (1979) PB 55 PB 32 (19)
- NW43 HAMLET AT POINCIANA COND - BLK 22
- NW44 PARK POINTE - BLK 22
- NW45 SEVEN SPRINGS PL 2 AMND (19) PB 60 PB 24 (19) X
- NW46 PARK POINTE PL 2 (SEE BLK 22)
- NW47 VILLAGES OF WOODLAKE PL 4 (19) PB 63 PB 105
- NW48 FOUNTAINVIEW AT SPRING LAKES COND (91)
- SE 49 VILLAGES OF WOODLAKE PL 5 (91) PB 66 P107
- SE 50 GREENACRES CITY BRANCH LIBRARY (91) PB 67 P9



Information Modify Date 5/20/2016
 Burger King
 Deed for Parcel in Sec 27 - OR 4270-1322
 Deed for Parcel in Sec 22 - OR 3421-1965
 Deed for RW Parcel 101 in Project 2012500 - OR 23066-1543 (has wrong call)



NOTE:
 NOT TO BE REPRODUCED IN ANY FORM EXCEPT BY EXPRESS WRITTEN CONSENT FROM THE PALM BEACH COUNTY PROPERTY APPRAISER
 Information shown herein is compiled from the best available sources and CANNOT be used for surveys or land transfers of any type.

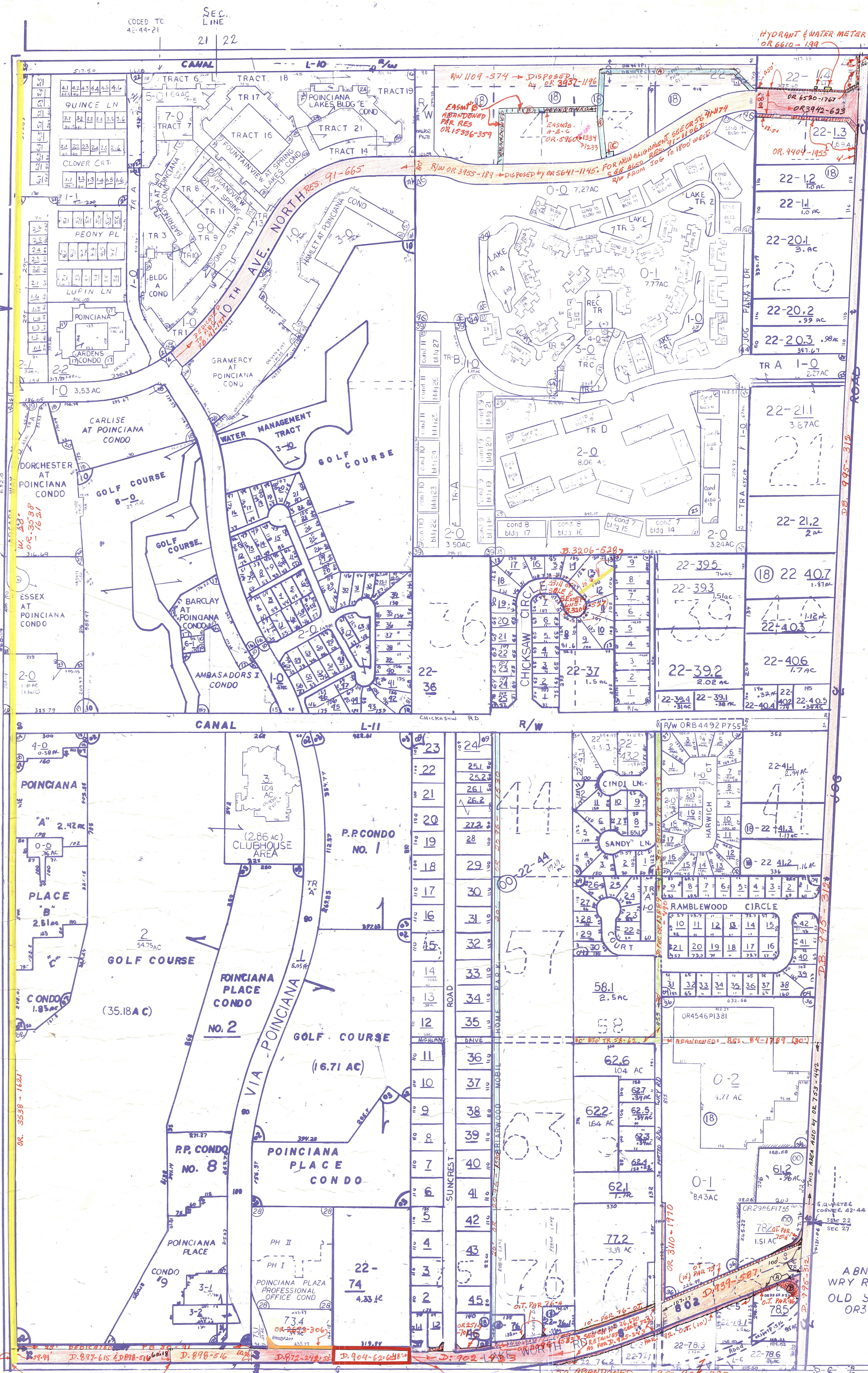
PALM BEACH COUNTY
GARY R. NIKOLITS
 PROPERTY APPRAISER

36	31	32	33	34	35	36	31
1	6	5	4	3	2	1	6
12	7	8	9	10	11	12	7
13	16	17	18	19	20	21	16
24	10	20	21	22	23	24	10
25	10	20	21	22	23	24	10
31	32	33	34	35	36	31	31
1	6	5	4	3	2	1	6

RGE TWP SEC AERIAL
 42 44 22 EAST N063-67A
 SCALE 1" = 200'
 DRAWN BY J. BUSH 17 AUGUST '99
 UPDATED

WEST LINE BLOCK 22
TRACT LINE

Palm Beach County (County) makes no representation or warranties whatsoever on the attached enclosed information reflected herein pertaining to easements, rights-of-way, setback lines, reservations, agreements, and other similar matters. The information provided herein should not be relied upon, and the requesting party must confirm the existence/non-existence of facts contained herein.



NOTE:
PALM BEACH FARMS CO.
PL. 3 IS CODED 05 IN
27-43-42

PLATS NOT FOUND ON THIS MYLAR
BUT LISTED BELOW MAY BE FOUND
IN SECTION 42-44-22 (EAST 1/2)

- SW 01 PL. OF PINECREST MOBILE HOMES (PLAT AMENDED) PB 26-229
- SW 02 POINCIANA PLACE PHASE 1 (SEE SEC FILE) PB 30-91
- SW 03 " " CONDOS PB31-191 (16)
- SW 04 RAMBLEWOOD (1977) PB31-214
- SE 05 HEATHER ESTATES (1977) PB33-127
- NE 06 SEVEN SPRINGS PL. (1978) PB34-160
- SW07 POINCIANA PLACE CONDO A,B,C (1979) AM24
- SW08 " " PHASE I, REPLAT (1979) PB 35-54
- SW09 SUNCREST RIDGE SEC. I (CODED 09 IN 42-43-27) PB 35-78
- NW10 POINCIANA PLACE, PHASE II (1979) PB 35-113
- SW11 RAMBLEWOOD TWO (1979) PB35-189
- NE 12 BUTTWOOD PLAT I (1979) PB 36-72
- NE 13 CHICKSAW MANOR (1979) PB 40 P51
- NE 14 CHICKSAW MANOR UNIT TWO (1980) PB45P72
- NW15 AMBASSADORS I CONDO (1981) PB 45P172
- NW16 POINCIANA PLACE, PHASE II B (81) PB 45P172
- NW17 BARCLAY AT POINCIANA CONDO (1981) PB 45P172
- NW18 CARLISE AT POINCIANA CONDO (1982) PB 45P172
- NW19 POINCIANA PLACE PHASE II-C (1982) PB41P47
- NW20 DORCHESTER AT POINCIANA CONDO (1982) PB 45P172
- NW 21 POINCIANA PLACE PHASE III-A (1982) PB42P56
- NW22 POINCIANA PLACE PHASE III-B (1982) PB42P50
- NW23 ESSEX AT POINCIANA CONDO (1983) PB 45P172
- NW24 POINCIANA LAKES BLDG A CONDO (1984) PB 45P172
- NW25 LUCERNE PARK PL NO. 1 (1984) PB 45P172
- NW26 GRAMERCY AT POINCIANA CONDO (1985) PB 45P172
- NW 27 LUCERNE PARK CONDO (1985) PB 45P172
- 28 POINCIANA PLAZA PROFESSIONAL OFFICE CONDO-85
- NW 29 SEVEN SPRINGS PLAT NO. 2 (1986) PB 45P172
- NE 30 BUTTWOOD PL 2 (1988) PB 45P172
- 31 VILLAGES OF WOODLAKE TWHHS (1988) PB 45P172
- 32 VILLAGES OF WOODLAKE TWHHS (1988) PB 45P172
- 33 VILLAGES OF WOODLAKE PL NO 2 PEPL PB 45P172
- 34 TOWN CLUB OF GREENACRES PB 49P158
- NW 35 LUCERNE PARK PL NO 2 PB49P158
- SW 36 GREENACRES PLAZA (86) PB50P116
- SW 37 HARWICH COURTS (86) PB51P200
- NE 38 BUTTWOOD PLAZA PB52P29
- NE 39 LUCERNE PARK PL 3 (87) PB52P194
- 40 BARCLAY SQUARE-SEE E 1/2 OF SEC
- NW41 POINCIANA PLACE PH 2-C REPL (87) PB54P25
- 42 LAKE WORTH WILLOW CORP CENTER - SEE E 1/2 OF SEC
- NW43 HAMLET AT POINCIANA CONDO (87)
- NW44 PARK POINTE PL I PB 58P103
- 45 SEVEN SPRINGS PL 2 AMND (SEE E 1/2 OF SEC)
- NW 46 PARK POINTE PL 2 (90) PB62P135
- 47 VILLAGES OF WOODLAKE PL 4 (SEE E 1/2 OF SEC)
- NW 48 FOUNTAINVIEW AT SPRING LAKES CONDO (91)
- 49 VILLAGES OF WOODLAKE PL 5 (91) PB66P107
- 50 GREENACRES CITY BRANCH LIBRARY (91) PB67 P9 (SEE E 1/2 SEC 22)

NOTES

- ① COUNTY ABANDONMENT: RES. 73-597 TRACTS 6 THRU 15 " 26 " 35 " 46 " 55 " 65 " 69 INCLUDING 30' R/W BTWN. 11-15 & 26-30 AND 30' R/W BTWN. TRS 51-55 & 65-69 OR. 2233-851.
- ② WEST PENINSULAR TIME COMPANY V. P.P.C. OR. = 5608-1286, SEE P.B. FARMS PLAT N° 5 MAR. FOR PLATTED RD R/W IN BLK 22
- ③ POINCIANA PLACE - PHASE II A = 2 DRAINAGE EASMS. @ BTWN. TR 29 & 32 @ IN TR. 14 SEE OR 3452-160-161
- ④ LAKE WORTH RD. D.T. CASE N° 76-2836 CA (L) 011 OR. 2584-781

NOTE:
SUNCREST RIDGE SEC. I IS
CODED 09 IN 27-43-42

PALM BEACH COUNTY
GARY R. NIKOLITS
PROPERTY APPRAISER

RGE	TWP	SEC	BLK	AERIAL
42	44	22	22	NO 53-07A
SCALE		1"=200'		
DRAWN BY		J.BUSH 6-21-79		
UPDATED				