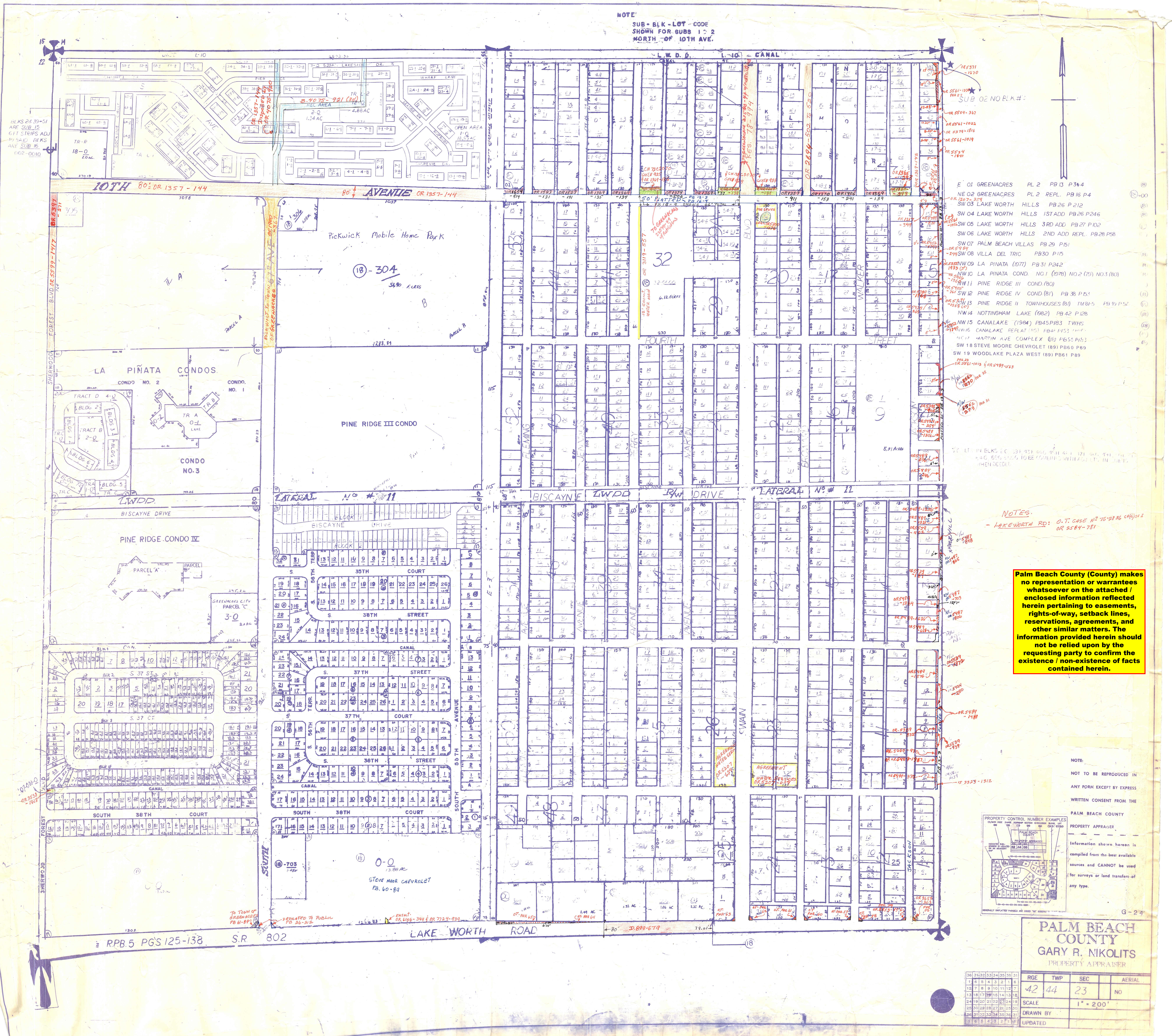
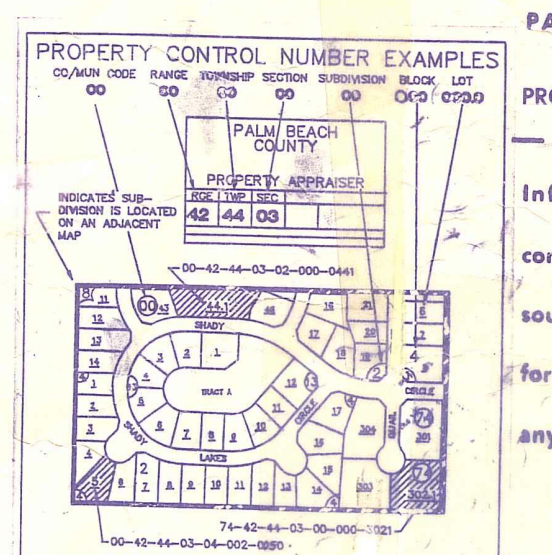


NOTE:
SUB-BLK-LOT-CODE
SHOWN FOR SUBS 1 & 2
NORTH OF 10TH AVE.



NOTES:
- LAKE WORTH RD: O.T. CASE NO 75-2836 CASE 011
OR 2584-781

Palm Beach County (County) makes no representation or warranties whatsoever on the attached / enclosed information reflected herein pertaining to easements, rights-of-way, setback lines, reservations, agreements, and other similar matters. The information provided herein should not be relied upon by the requesting party to confirm the existence / non-existence of facts contained herein.



PALM BEACH COUNTY
GARY R. NIKOLITS
PROPERTY APPRAISER

RGE	TWP	SEC	AERIAL
42	44	23	NO
SCALE 1" = 200'			
DRAWN BY			
UPDATED			

36	31	32	33	34	35	36	31
1	6	5	4	3	2	1	6
12	7	8	9	10	11	12	7
24	18	19	20	21	22	23	18
24	18	20	21	22	23	24	18
25	20	22	23	24	25	26	21
26	31	32	33	34	35	36	31
1	6	5	4	3	2	1	6