

Palm Beach County (County) makes no representation or warranties whatsoever on the attached / enclosed information reflected herein pertaining to easements, rights-of-way, setback lines, reservations, agreements, and other similar matters. The information provided herein should not be relied upon by the requesting party to confirm the existence / non-existence of facts contained herein.

NOTES:

- BOYNTON BEACH BLVD:
 THE JURISDICTION OF THIS RD. IS TRANSFERRED TO P.B.C. - 3960' (+/-) WEST OF SR7 = (0.758 MILES).
 SEE R. 96-593

NOTE: PALM BEACH FARMS CO. PL. 111 IS CODED '05' IN SEC 27-43-42 AND IS IN THE COUNTY-00.

NOTE:

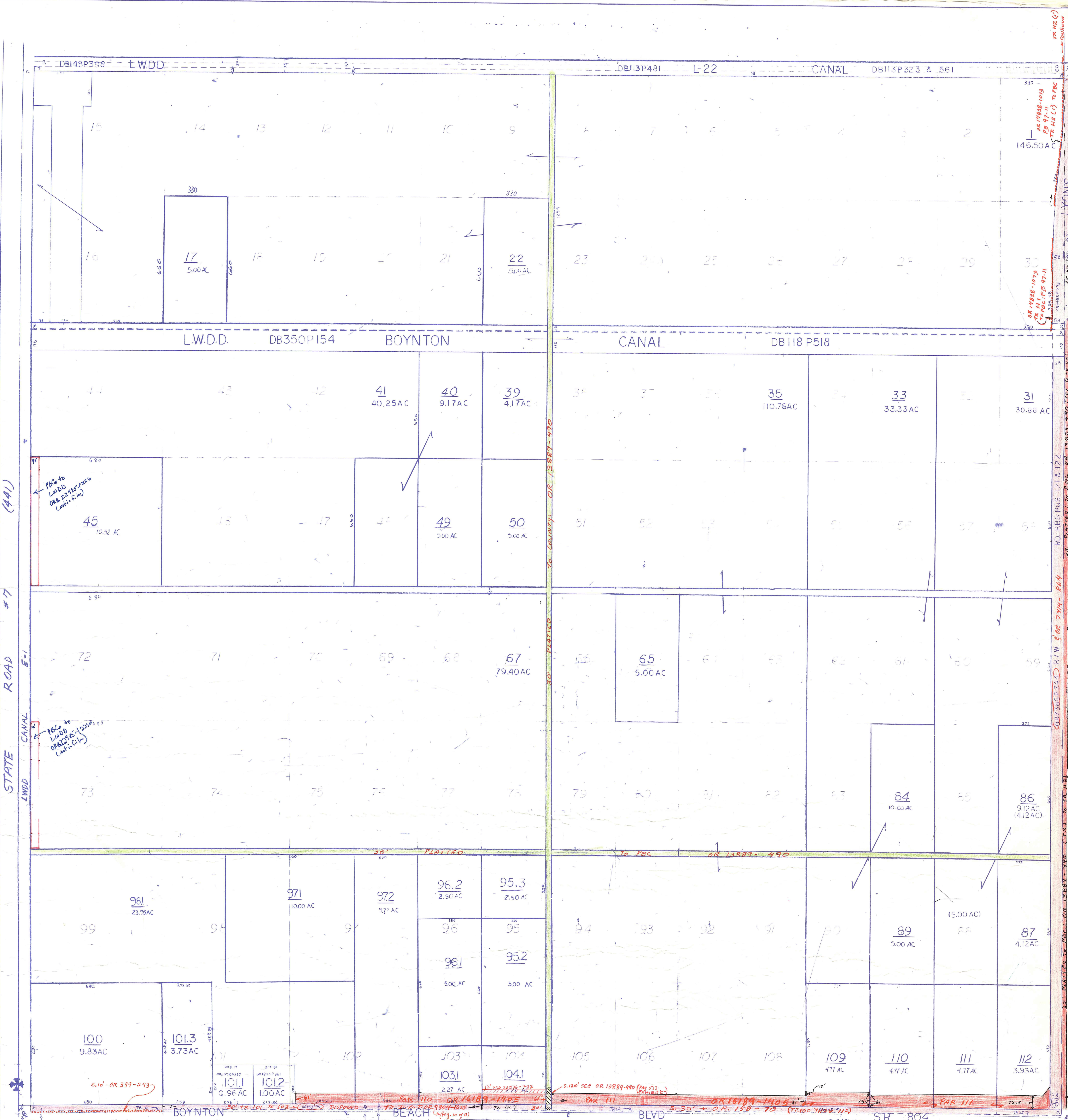
NOT TO BE REPRODUCED IN ANY FORM EXCEPT BY EXPRESS WRITTEN CONSENT FROM THE PALM BEACH COUNTY ASSESSOR.

Information shown hereon is compiled from the best available sources and CANNOT be used for surveys or land transfers of any type.

K-30

PALM BEACH COUNTY
GARY R. NIKOLITS
 PROPERTY APPRAISER

RGE	TWP	SEC	BLK	AERIAL
42	45	19	51	NO 60-43A
SCALE 1"=200'				
DRAWN BY [Signature]				
UPDATED [Signature]				



BOYNTON BEACH BLVD: SEE NOTES.