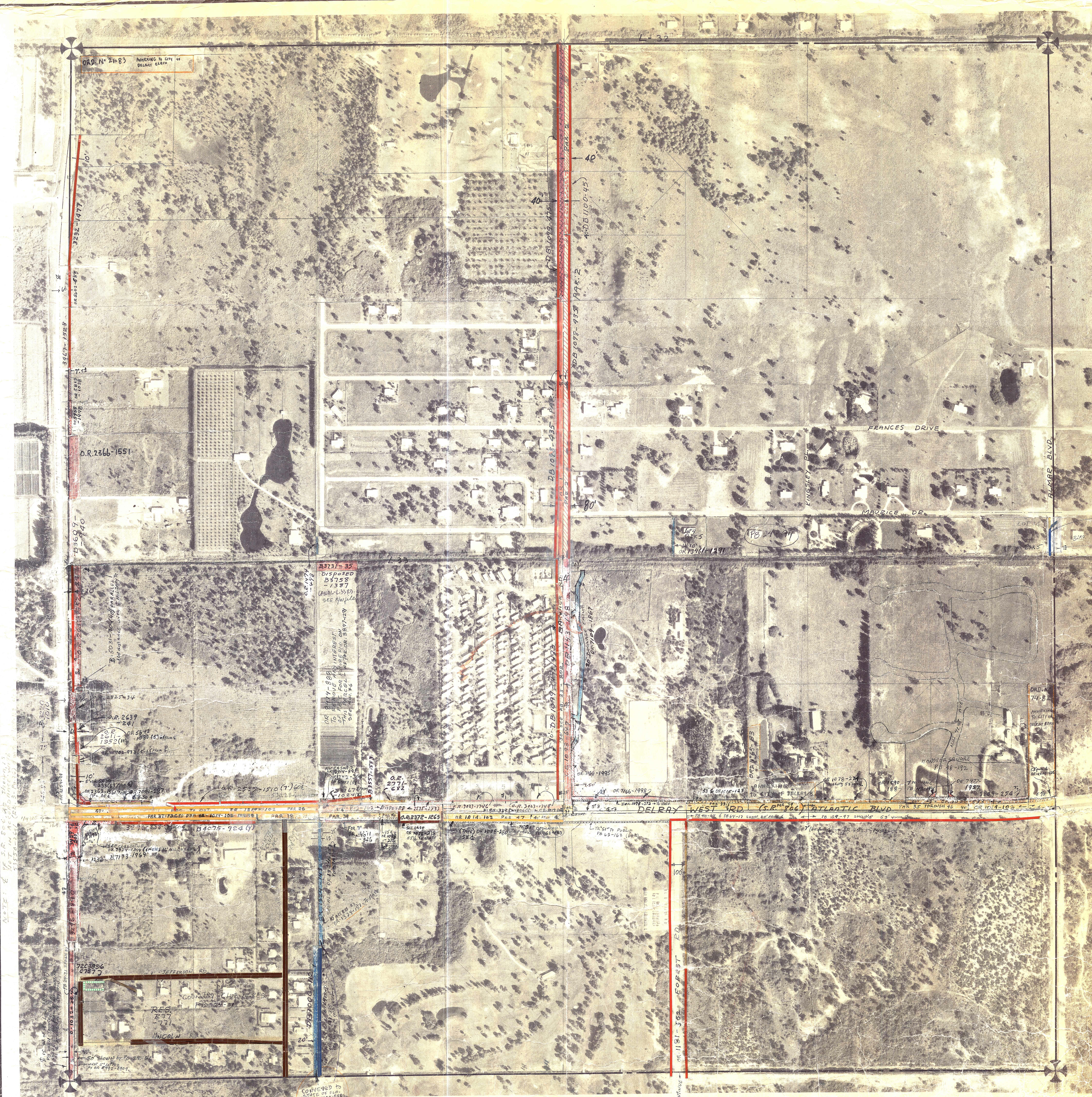


Palm Beach County (County) makes no representation or warrants whatsoever on the attached / enclosed information reflected herein pertaining to easements, rights-of-way, setback lines, reservations, agreements, and other similar matters. The information provided herein should not be relied upon by the requesting party to confirm the existence / non-existence of facts contained herein.



O.R. 2547-1204
RES. 75-167
PORTION OF
ALMAIR BLVD
AS SHOWN PB 2479

13-46-42
to
20-46-42

PALM BEACH COUNTY
S 44
DAVID L. REID
County Assessor

RCF	TWT	REC	AERIAL
42	4	13	No. 637

BROCKWAY OWEN & ANDERSON ENGINEERS, INC.
PLANNERS & ENGINEERS

SCALE IN FEET
0 200 400 600 800 1000

Aerial Photo Date — 10-23-70