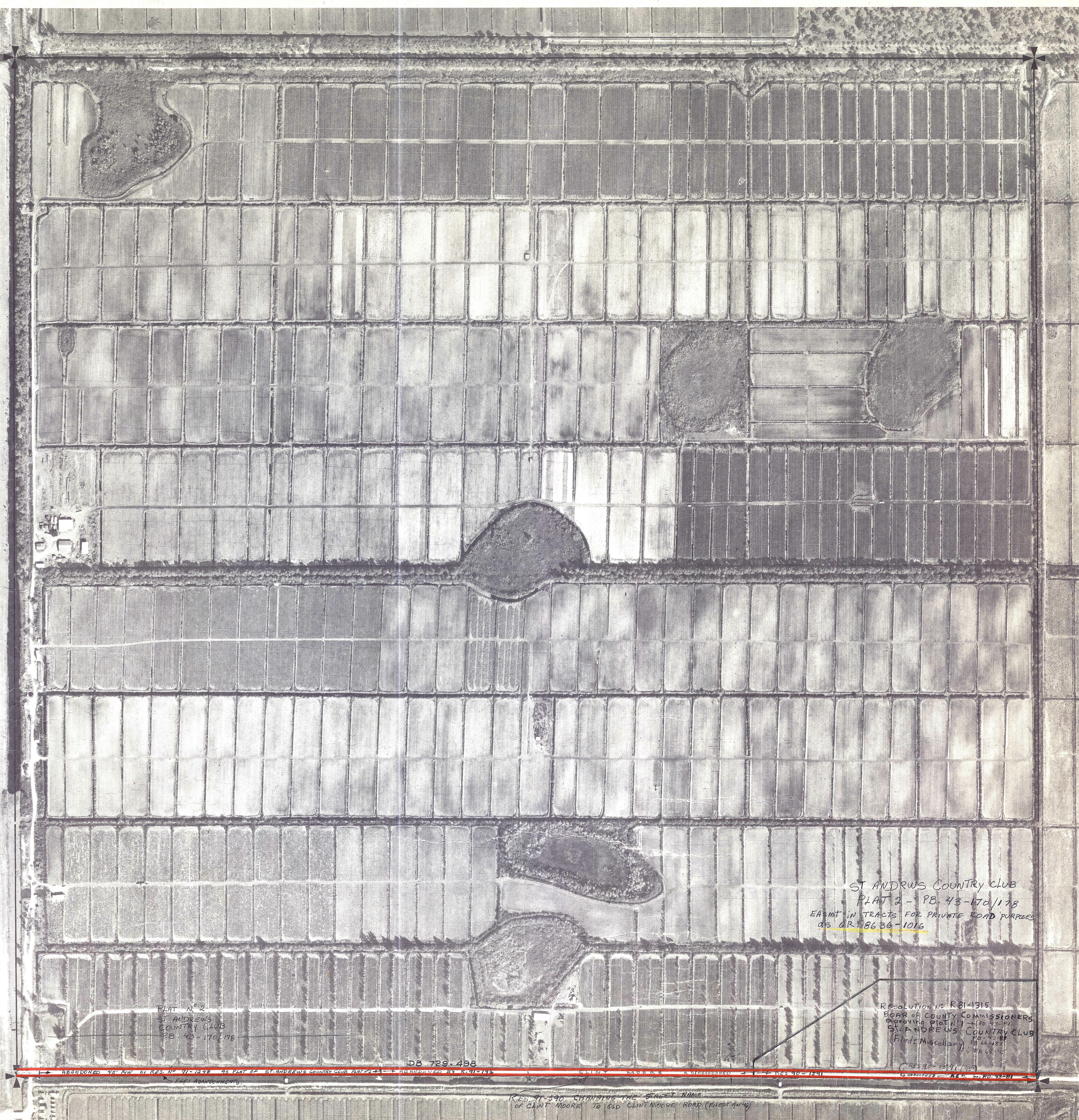


Palm Beach County (County) makes no representation or warranties whatsoever on the attached / enclosed information reflected herein pertaining to easements, rights-of-way, setback lines, reservations, agreements, and other similar matters. The information provided herein should not be relied upon by the requesting party to confirm the existence / non-existence of facts contained herein.



ST ANDREWS COUNTRY CLUB
 PLAT 2 - PB. 43-170/178
 EASMT IN TRACTS FOR PRIVATE ROAD PURPOSES
 AS OR. 8636-1016

PLAT NO. 2
 ST ANDREWS
 COUNTRY CLUB
 PB. 43-170/178

RESOLUTION NO. R81-1315
 BOARD OF COUNTY COMMISSIONERS
 APPROVING PLAT NO. 2 - (PB. 43-178)
 ST. ANDREWS COUNTRY CLUB
 (Filed: Miscellaneous) PB. 43-178

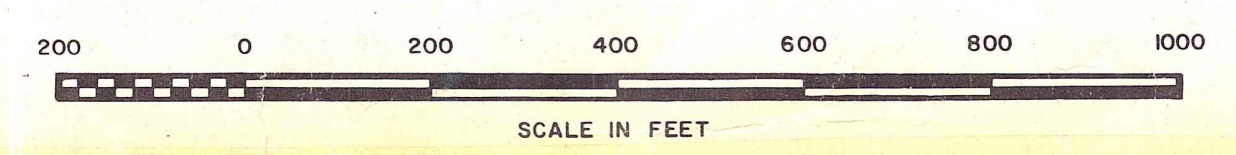
ABANDONED 48' HWY BY RES. NO. 91-1278 AS PART OF ST. ANDREWS COUNTRY CLUB PLAT 2 - (PB. 43-178) AS ABANDONED BY RES. NO. 91-1278
 DB 729-498
 CLINT MOORE ROAD
 RES. 91-590 CHANGING THE STREET NAME OF CLINT MOORE TO OLD CLINT MOORE ROAD (FILED 9/1/46)

Clint Moore Road

NOTE:
 NOT TO BE REPRODUCED IN ANY FORM EXCEPT BY EXPRESS WRITTEN CONSENT FROM THE PALM BEACH COUNTY TAX ASSESSOR.
 Information shown hereon is compiled from the best available sources and CANNOT be used for surveys or land transfers of any type.

PALM BEACH COUNTY		
5,46		
SEC.	TWP.	RGE.
33	46	42
1" = 200' No. 512		

MOCK ROOSE ENGINEERING BY



Aerial Photo Date - JAN. 22, 1968