

Palm Beach County (County) makes no representation or warranties whatsoever on the attached / enclosed information reflected herein pertaining to easements, rights-of-way, setback lines, reservations, agreements, and other similar matters. The information provided herein should not be relied upon by the requesting party to confirm the existence / non-existence of facts contained herein.

OLD CLINT MOORE RD.
 AREA ABANDONED BY P.B.C. BTWN SECT 35 AND SECT 2 (RES. 90-1589-OR 6593-14) THEN RENAMES AS LE LAC RD IN WEST OF SECT. 35. (RES. FILE)

RESOLUTION R-92-302
 CHANGING THE NAME OF OLD CLINT MOORE RD. TO LE LAC RD. SEE ALSO SECT. 2-47-92. (RES. FILE)

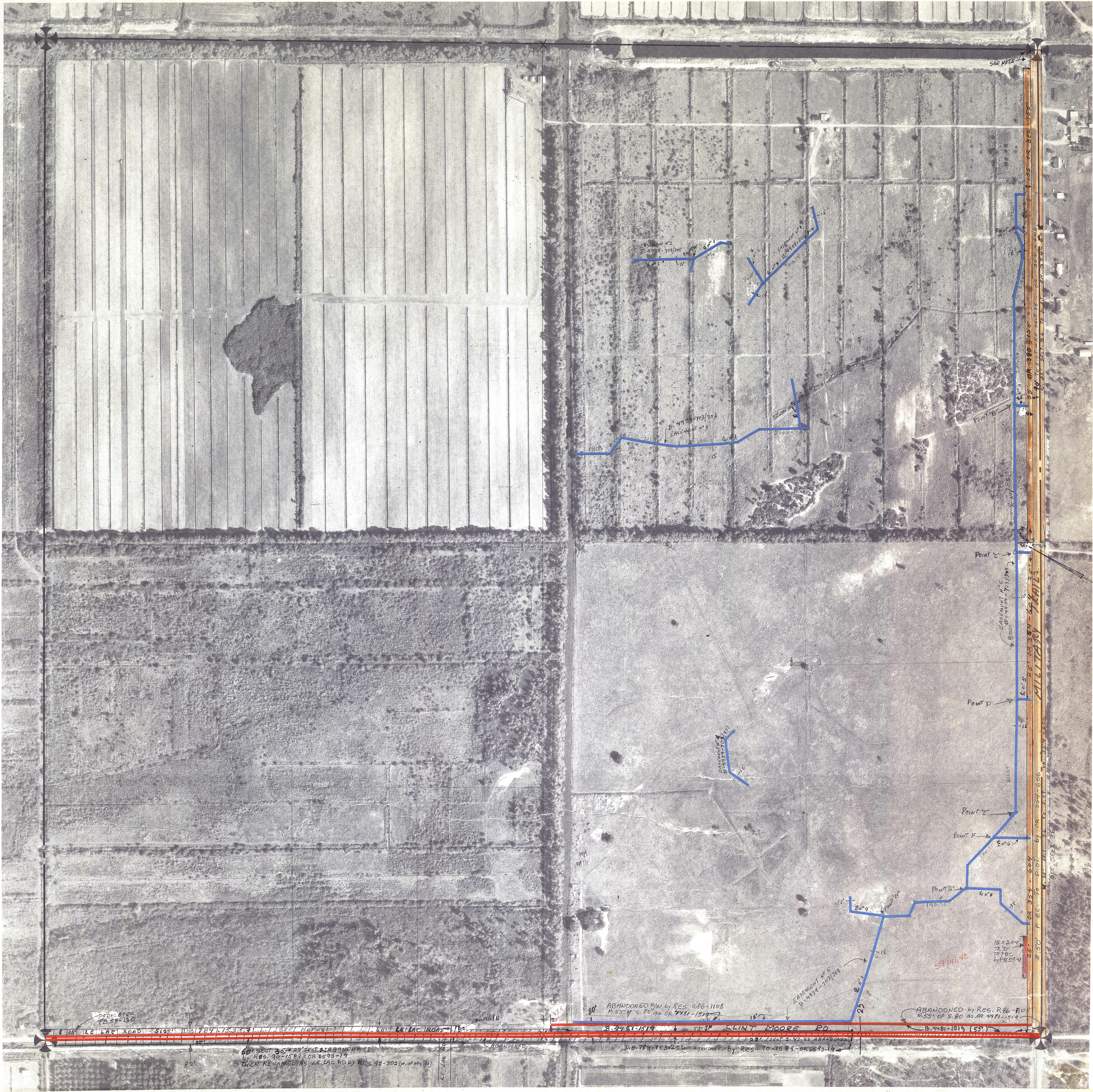
MILITARY TR.
 FOR RW OVER CANAL L-39, L-38, AND M/2 L-40 SEE OR 491-259. LWARD TO D.O.T.

CE ABANDONED
 File for
 Old Clint Moore Rd.

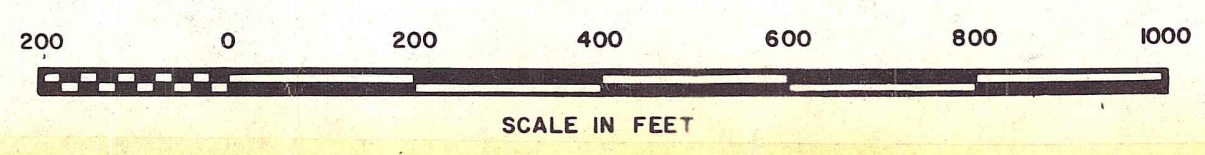
NOTE:
 NOT TO BE REPRODUCED IN ANY FORM EXCEPT BY E... WRITTEN CONSENT FROM THE PALM BEACH COUNTY ASSESSOR.
 Information shown hereon is compiled from the best available sources and CANNOT be used for surveys or land transfers of any type.

PALM BEACH COUNTY
 S.47
 DAVID L. REID
 County Assessor

| RGE | TWP | SEC | AERIAL |
|-------|-----|-----|---------|
| 42 | 46 | 35 | No. 587 |
| SCALE | | | 1"=200' |



BROCKWAY, OWEN & ANDERSON ENGINEERS, INC.
 ENGINEERS PLANNERS SURVEYORS
 WEST PALM BEACH, FLORIDA



Aerial Photo Date — 10-23-70