

Palm Beach County (County) makes no representation or warranties whatsoever on the attached / enclosed information reflected herein pertaining to easements, rights-of-way, setback lines, reservations, agreements, and other similar matters. The information provided herein should not be relied upon by the requesting party to confirm the existence / non-existence of facts contained herein.

WEST PENINSULAR TITLE COMPANY VS. PALM BEACH COUNTY: SEE OR 56 OP-1586, ATTACHED TO PALM BEACH FARMS CO. PL. N'S MAP FOR RD RW IN BLK 78.

REF. PB 31-62 SH. 4

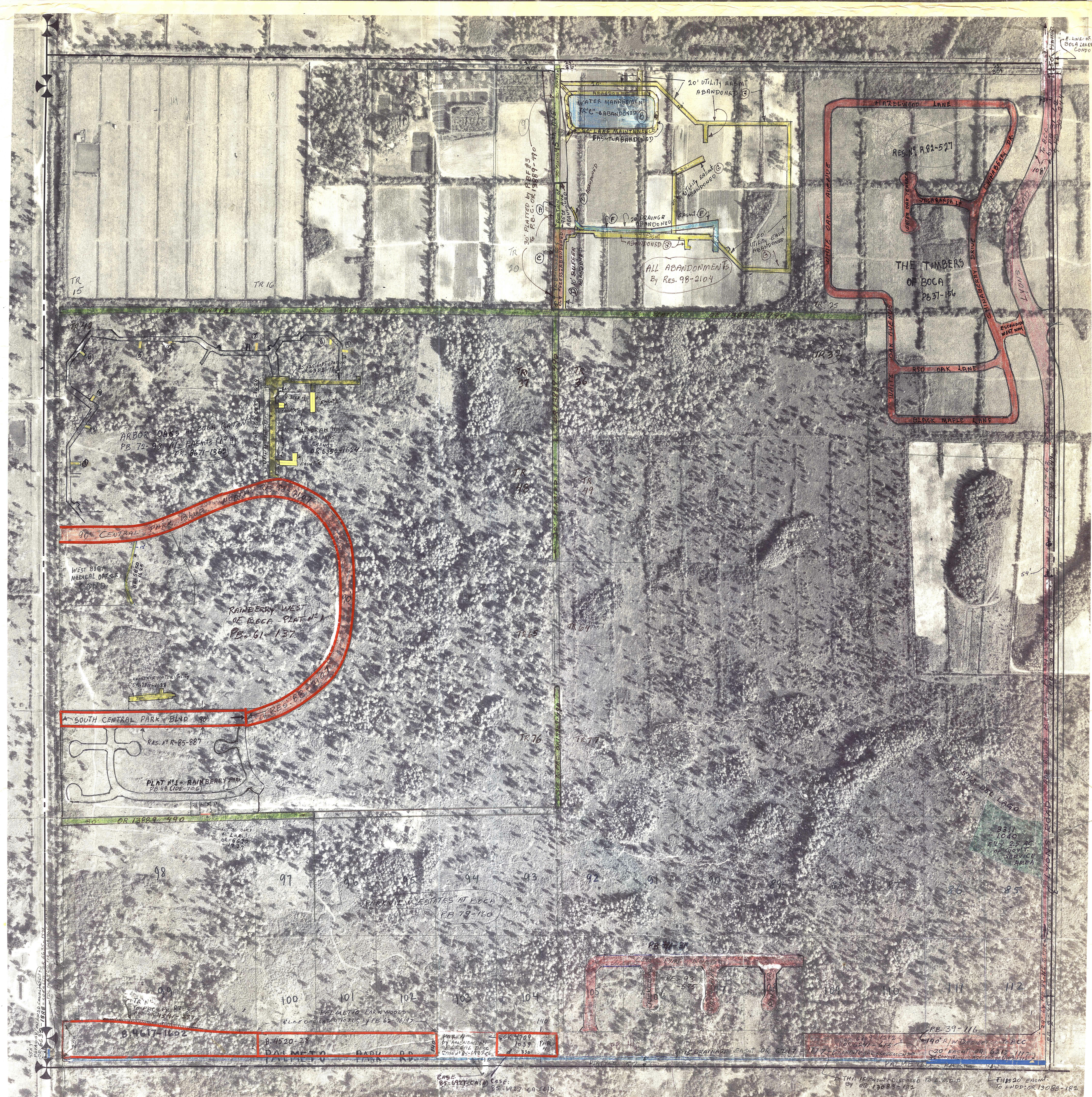
NOTE:
NOT TO BE REPRODUCED IN ANY FORM EXCEPT BY EXPRESS WRITTEN CONSENT FROM THE PALM BEACH COUNTY ASSESSOR.

Information shown herein is compiled from the best available sources and CANNOT be used for surveys or land transfers of any type.

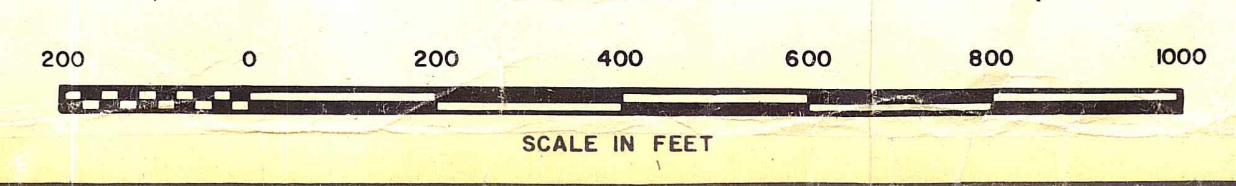
PALM BEACH COUNTY
 5.52
DAVID L. REID
 County Assessor

RGE	TWP	BLOCK	5	AERIAL
42	47	78	19	No 177C

SCALE 1"=200'



BROCKWAY OWEN & ANDERSON ENGINEERS, INC.
 ENGINEERS PLANNERS SURVEYORS
 WEST PALM BEACH, FLORIDA



Aerial Photo Date — 10-23-70