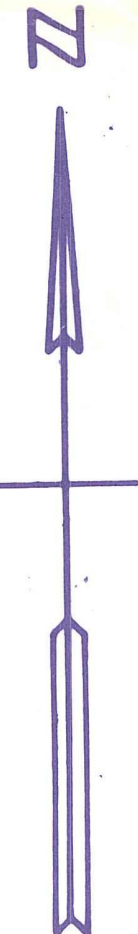


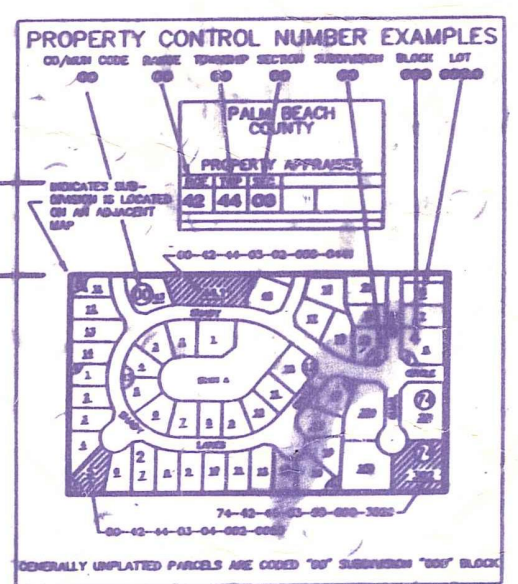
Palm Beach County (County) makes no representation or warranties whatsoever on the attached / enclosed information reflected herein pertaining to easements, rights-of-way, setback lines, reservations, agreements, and other similar matters. The information provided herein should not be relied upon by the requesting party to confirm the existence / non-existence of facts contained herein.



- 501 PALM BEACH CABANA COLONY PL. 1 PB 25-204 00
- 502 " " " " EAST PB 27-58 00
- 503 " " " " COMM. PB 27-59 00
- 504 " " " " PL. 2 PB 26-238 00
- 505 GARDENWAY CONDOS

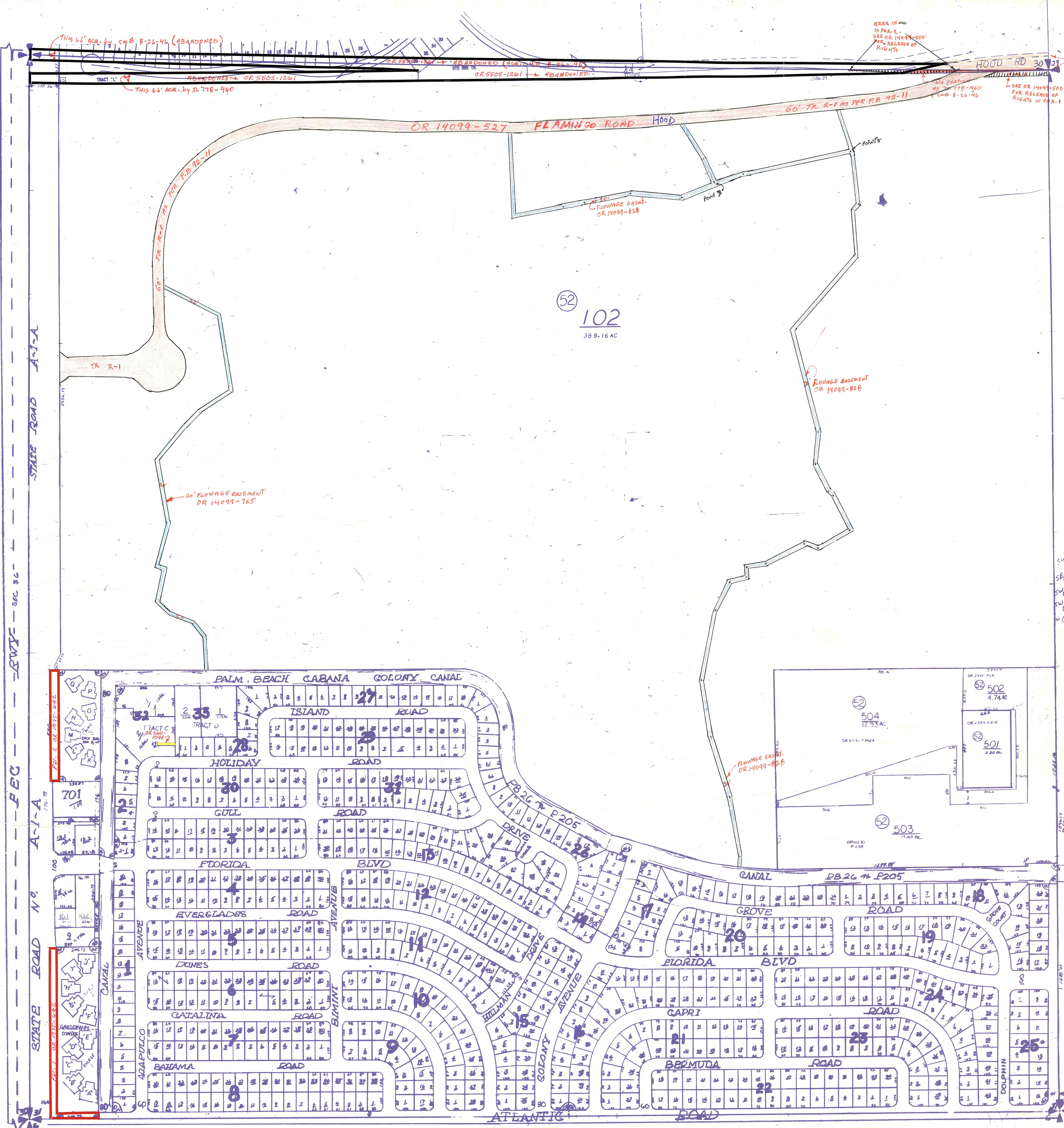
PT OF SEC IN 00
 PT OF SEC IN 52

NOTE:
 NOT TO BE REPRODUCED IN ANY FORM EXCEPT BY EXPRESS WRITTEN CONSENT FROM THE PALM BEACH COUNTY PROPERTY APPRAISER
 Information shown hereon is compiled from the best available sources and CANNOT be used for surveys or land transfers of any type.

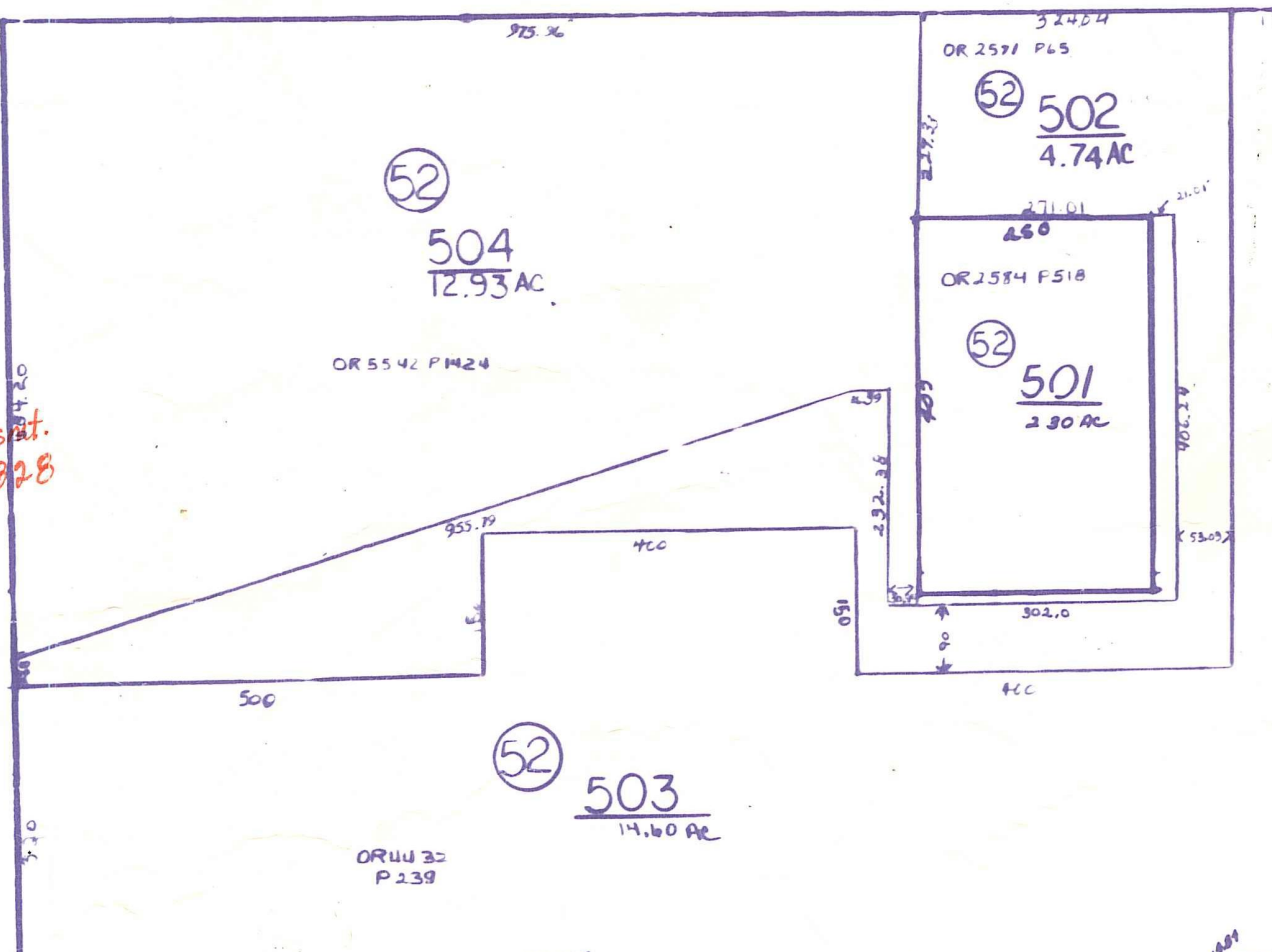


E-8
PALM BEACH COUNTY
 N-10
 PROPERTY APPRAISER

36	31	32	33	34	35	36	31	RGE	TWP	SEC	AERIAL
1	8	9	10	11	12	13	4	43	41	31	NO 718
14	15	16	17	18	19	20	7	SCALE	1" = 200'		
21	22	23	24	25	26	27	8	DRAWN BY	Jon Buik		
28	29	30	31	32	33	34	9	UPDATED	3/17/11		



52
 102
 389.16 AC



This 66' AC. by CMB 8-26-46 (ABANDONED)
 ABANDONED - OR 5505-1261
 THIS 66' AC. by D. 778-460

AREA IN 1111
 IS PAR. 1.
 SEE OR 14099-500
 FOR
 RELEASE OF
 RIGHTS

66' N. OF SECT.
 CORNER INCL. 10000
 IN D. 778-460 TO PAC

THIS PORTION
 AS TR. 778-460
 CMB 8-26-46
 SEE OR 14099-500
 FOR RELEASE OF
 RIGHTS IN PAR. 1

30'
 FLOWAGE EASMT.
 OR 14099-828

FLOWAGE EASEMENT
 OR 14099-828

30'
 FLOWAGE EASEMENT
 OR 14099-765

FLOWAGE EASMT.
 OR 14099-825

STATE ROAD A-1-A

SEC 36

STATE ROAD N-10

